



Annual Report – FY2010

Research Activity for the period of July 1, 2009 to June 30, 2010





Annual Report - FY 2010

Research Activity for the period of July 1, 2009 to June 30, 2010

Table of Contents

| | |
|--|----|
| Climate Change Institute – Introduction | 3 |
| Climate Change Institute – Organizational Chart | 4 |
| Climate Change Institute – Summary of Accomplishments | 5 |
| Research Grant Submissions Analysis – FY2010 | 6 |
| Major Awards | 7 |
| Research Expeditions | 7 |
| Mentoring | 8 |
| Summary of Faculty Publications Totals | 8 |
| Goals for FY 2011 | 8 |
| Challenges & Solutions | 9 |
| Full Roster of Climate Change Institute Faculty/Staff | 11 |
| Climate Change Institute E&G & MEIF Funded Positions | 13 |
| Special Recognition/Awards/Honors received for research, scholarship, creativity | 14 |
| Publications: Abstracts/Books/Book Chapters/Journal Articles/Posters Proceedings/Technical Reports | 15 |



| | |
|---|----|
| Presentations: International/National/Regional/State/Local | 30 |
| Conferences/Symposia/Meetings Attended: International/National/ Regional/State/Local | 37 |
| Research Expeditions and Field Trips | 40 |
| Other Indicators | 42 |
| Media Presentations Created | 43 |
| Service – To Profession | 43 |
| Service – To Department | 46 |
| Service – To College | 48 |
| Service – To University | 49 |
| Service – To State Legislature | 51 |
| Service – To State Government Agencies | 51 |
| Service – To General Public/Local Community | 51 |
| Service – To Pre-K-12 Education | 52 |
| Service – Manuscripts/Proposal Reviewed | 53 |
| Service – Television/Radio/Newspaper Interviews | 56 |
| Special Public Service Recognition/Awards/Honors Received | 57 |
| Other (e.g. special contacts) | 57 |

The Climate Change Institute – University of Maine

Introduction, Summary of Accomplishments (FY2010), Goals for Next Year (FY2011), Challenges and Solutions

Introduction

The Climate Change Institute (CCI) is an inter- and multi-disciplinary research unit that conducts world-class research, graduate education, and environmental outreach focused on the variability of Earth's climate system, and on the interaction between humans and the natural world. Research is supported through federal grants (NSF, NASA, NOAA, EPA), private foundations (Bingham Family Trust, W.M. Keck Foundation,) and individuals (Dan and Betty Churchill Exploration Fund, Brenda Garrand and others).

The 55 faculty and staff of the Institute and 40 graduate students provide immense multidisciplinary strength in a diverse range of research themes: physical and chemical climate reconstruction, paleoecology and environmental reconstruction, anthropology and archaeology, glaciology, marine geology, ecosystems and environmental change, renewable energy and environmental monitoring, cyberinfrastructure, climate prediction and modeling, climate change impacts, policy, and sustainability (see Climate Change Organizational Chart).

CCI researchers are world acclaimed as evidenced by their numerous publications which include thousands of peer reviewed journals and books. Members of the Institute have received major national and international honors (eg., National Academy of Sciences, Inaugural SCAR Medal for Excellence in Antarctic Research among a field of 35 countries and all disciplines, several honorary PhDs, the Explorer's Club Lowell Thomas Medal, AGU and AAAS Fellows), and are routinely sought to provide high profile media appearances addressing climate change (eg., NOVA, PBS, CBS 60 Minutes, Good Morning America, NY and LA Times, NPR).

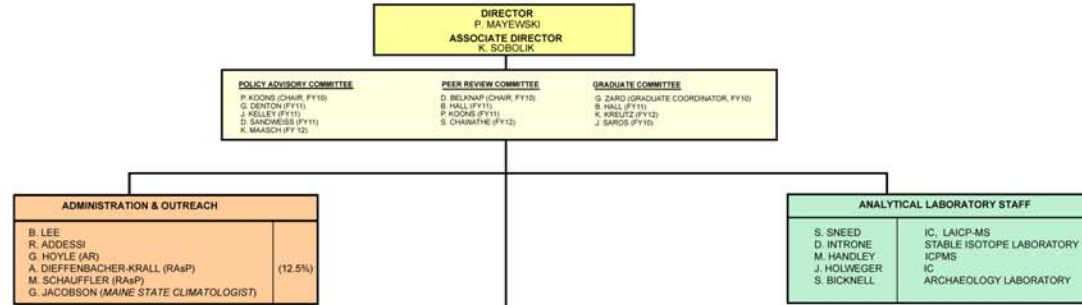
CCI has a 35-year legacy of multi-disciplinary, high profile scientific contributions <http://www.climatechange.umaine.edu/research/contribution-series> to the understanding of natural climate variability, human impact on climate, and the impact of climate change on humans and ecosystems. CCI scientists conduct climate change research around the globe from the deserts and highlands of Peru throughout the Andes, to the diminishing glaciers of Greenland onto the summit of Greenland, throughout the Himalayas and the Tibetan Plateau, across the vast Antarctic continent, to the rocky shores of Maine. The fact that CCI is one of the oldest climate change research institutes in the world is a great credit to the University of Maine and CCI's founders.



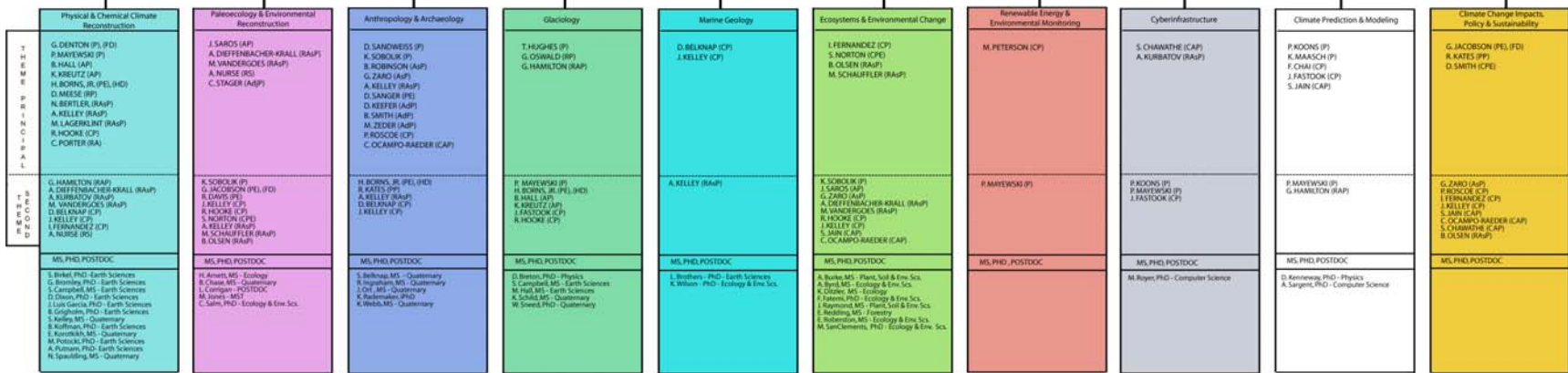


ORGANIZATIONAL CHART

REVISED
7/16/2010



RESEARCH THEMES



| Legend | |
|-------------------------------------|--|
| P - Professor | CAP - Cooperating Associate Professor |
| AP - Associate Professor | CA&P - Cooperating Assistant Professor |
| AS&P - Assistant Professor | CP - Cooperating Professor Emeritus |
| PE - Professor Emeritus | RS - Research Scientist |
| PP - Presidential Professor | RA - Research Associate |
| RP - Research Professor | RA&P - Adjunct Professor |
| RA&P - Research Associate Professor | AB - Artist in Residence |
| RA&P - Research Assistant Professor | HD - Honorary Director |
| CP - Cooperating Professor | FD - Former Director |

Strong disciplinary linkages and shared faculty appointments exist between the Climate Change Institute and the following University of Maine units: Earth Sciences, Anthropology, Ecology and Environmental Sciences, Mechanical Engineering, Computer Science, Civil and Environmental Engineering, Biology and Ecology, Marine Sciences, and LAAST.

CCI researchers have extensive field experience and expertise to tackle critical, complex issues related to climate change and human adaptations to changing climates. These issues are extremely challenging, but they are particularly well suited to the character of the Institute. Physical and chemical climate change issues are deeply embedded within the fabric of local to global scale concerns over economy, health, and overall quality of life. Climate change is inevitable, but how much and its impact will define our reality and opportunities in the future. CCI's mission continues to evolve as its researchers probe further into the complexities and implications of Earth's changing climate. The Institute provides unique scientific products including:

Long-term Perspective in the form of records of past climate (ice cores, lacustrine cores, glacial deposits, human adaptation) from around the world.

Climate Prediction and Planning from local to global and long term to abrupt scales through highly detailed and innovative analysis of climate records within climate modeling perspectives.

Positive Policy Implications such as environmental and renewable energy planning founded on sound science.

Technological Advances in environmental monitoring, processing and analyses of archives containing physical and chemical climate information, and cyberinfrastructure needed to interpret climate data.

Summary of Accomplishments (FY2010)

Research Grant Submissions – submitted in FY2010 – to cover period 2010 - 2013

Research grant submissions for the Climate Change Institute totaled **\$35,363,245** for fiscal year 2010. This total reflects **115** submissions (includes new, supplemental, continuation, and pre-proposal submissions); and is exclusive of EPSCOR proposals that include Institute faculty participation.



New Research Grant Submission Awards – FY2010

New research grant submissions (includes new, supplemental and continuation awards) awarded to the Climate Change Institute total **\$13,817,910** (63 grants).

Pending Research Grants Submissions – FY2010

Research grant submissions pending for the Climate Change Institute total **\$18,264,798** (43 grants) covering FY2010 – FY2013.

Declined/Withdrawn Research Grant Submissions – FY2010

Research grant awards declined for the Climate Change Institute totaled **\$3,280,537** (9 grants) during FY2010.

Percent Success Rate by all CCI Grant Writers for Research Grant Submissions – FY2010

Climate Change Institute faculty and staff were **87.5% successful** in obtaining grant awards during FY2010.

Funds via E&G and MEIF – FY2010

E&G funding for salaries* (minus fringe) totals: \$614,103
E&G funding for operating totals: \$16,580

MEIF funding for salaries* (minus fringe) totals: \$488,144
MEIF funding for operating totals: \$28,350

TOTAL E&G and MEIF FUNDING: **\$1,147,177**

*Note – The vast majority of these salaries support tenure track faculty who teach courses in academic departments.

Return on Investment (ROI) for CCI – E&G and MEIF

| FY2009 Research Grants <i>(includes only faculty supported by E&G and MEIF)</i> | FY2010 Research Grants <i>(includes only faculty supported by E&G and MEIF)</i> |
|--|---|
| FY2009 Research Grants Total \$7,821,271 FY2010 E&G and MEIF Funding: \$1,093,160 | FY2010 Research Grants Total \$11,247,073 FY2010 E&G and MEIF Funding: \$1,147,177 |
| ROI = CCI return on investment is \$7.16 dollars per \$1 invested in MEIF and E&G | ROI = CCI return on investment is \$9.80 dollars per \$1 invested in MEIF and E&G |

The table below includes all Climate Change Institute grant writers who receive E&G and or MEIF funds through CCI.

| CCI Faculty/Staff | Grant Award Total FY2010 | Number of Grants |
|-------------------------------|-------------------------------------|-------------------------|
| Dieffenbacher-Krall | 728,717 | 2 |
| Denton, George | 1,164,130 | 9 |
| Hall, Brenda | 1,025,509 | 5 |
| Hamilton, Gordon | 1,435,906 | 7 |
| Koons, Peter | 2,151,599 | 4 |
| Kreutz, Karl | 287,336 | 2 |
| Kurbatov, Andrei | 407,668 | 1 |
| Mayewski, Paul | 3,197,425 | 5 |
| Saros, Jasmine | 848,783 | 9 |
| # of Grant Writers = 9 | | |
| TOTAL | \$11,247,073 | 44 |

The **average amount raised by each CCI grant writer** (9) supported by MEIF and/or E&G was **\$1,249,675** in FY2010.

Major Awards and Recognition:

Twelve major awards and recognitions (see page 15 of this report for details) were given to CCI faculty this year; maintaining CCI's high national and international standard of excellence.

Research Expeditions:

CCI takes great pride in its international reputation for research expeditions. All CCI graduate students are involved in at least one research expedition, many several, during their graduate career. Students provide daily logs as part of CCI's outreach. CCI

undertook **44 expeditions** this past year for details:
<http://www.climatechange.umaine.edu/research/expeditions>

Mentoring

A total of 40 graduate students are associated with the Institute, 19 are PhD students. Research grants support **30** of the graduate students.

Summary of Faculty Publications – FY2010

| PUBLICATION TYPE | FY2010 | FY 2009 | FY 2008 |
|---|--------|---------|---------|
| Publications/Abstracts/Books/Book Chapters/Journal Articles/Posters/Proceedings/Technical Reports | 218 | 267 | 169 |
| Presentations: International/National/Regional/State Local | 140 | 137 | 152 |

Goals for Next Year (FY2011)

The Institute’s goals for next year are to provide:

- (1) *Long-Term Climate Change Perspective* in the form of records of past climate from around the world.

This goal is based on the continuation of the Institute’s greatest legacy. Institute researchers have current and pending proposals for the collection of such records from throughout the world.

- (2) *Climate Prediction and Planning* from local to global and long term to abrupt scales.

Institute researchers have a long history of developing innovative modeling (ice sheet, climate, ocean, biochemical) achievements that have contributed to the understanding of, for example: ice sheet instability, sea level rise, and impact of iron fertilization on carbon sequestration. CCI has also made major strides in monitoring recent changes in the dynamics of the Greenland and Antarctic ice sheets. CCI is also taking a lead role in a variety of data collection and climate modeling activities that relate to past, current and projected changes in Antarctic climate and consequences for the Southern Hemisphere. CCI ran an international conference in June 2010 dedicated to organizing a multi-national effort addressing polar to tropical connections in climate change and will be leading a synthesis report plus several related field programs. The initiative



(PTC – Polar to Tropical Connections) is under the auspices of the Scientific Committee on Antarctic Research and includes climate change modelers from Brazil, Chile, New Zealand, Switzerland and several US institutions (New York University, University of Nebraska-Lincoln), Oak Ridge National Lab, Ohio State University) plus CCI.

CCI recently hired a climate modeler post-doc to undertake regional scale climate modeling centered over Maine and the Northeast. One of the most immediate intended products is to increase predictive capability for the assessment of wind strength over the Gulf of Maine as an aid to locating off shore wind power regions that are currently efficient, will continue to be so in the future, and sites that are environmentally suitable and sustainable. CCI has been a leader in assessing the state of major wind systems such as the Northern and Southern Hemisphere circumpolar westerlies. Assessing the state of the former is crucial to the future of Maine's offshore wind power plans.

- (3) *Technological Advances* in environmental monitoring, processing and analyses of archives containing physical and chemical climate information, and cyber infrastructure needed to interpret climate data.

CCI members Drs. Kurbatov and Chawathe continue to produce with several graduate students a series of cyber infrastructure activities developed to gather, synthesize, and interpret past and modern climate data (<http://www.icereader.org/icereader/>, <http://climatechange.umaine.edu/Research/software/icd.html>, <http://www.umcs.maine.edu/~chaw/p301/>).

CCI in collaboration with LAAST continues transformational development of equipment supported by W.M. Keck Foundation.

Challenges and Solutions

CCI has maintained its world class, cutting edge status as a climate change research facility. Notably it has continued:

- (a) To contribute substantially to the University's profile and federal funding,
- (b) To maintain a high level of return on investment by the University and the State,
- (c) To maintain an amazingly high level of proposal success rate in the most competitive federal funded agencies,
- (d) To demonstrate impressive success with private foundations such as the highly competitive W.M. Keck Foundation,



(e) To undertake a highly active endowment and gift seeking collaboration with the University Development Office that included the first ever UM Alumni expedition to Antarctica (February 2009) and an expedition to Greenland for alumni in August 2010 plus numerous events and presentations for and with the Development Office, Alumni Office, and the University Foundation.

CCI is operating at a remarkably high level of productivity. It can only further expand its success with the addition of new researchers in the form of post-docs, research faculty and tenure track faculty.

FULL ROSTER OF CLIMATE CHANGE INSTITUTE FACULTY/STAFF

| Last Name | First Name | Position in Research Unit | Home (Institute/Acad Dept) |
|---------------------|------------|--|--|
| Addessi | Becky | Manager of Funded Accounts | Climate Change Institute |
| Belknap | Daniel | Cooperating Professor | Earth Sciences/Climate Change Institute |
| Bertler | Nancy | Research Assistant Professor | Climate Change Institute |
| Borns | Harold | Professor Emeritus of Geological Sciences and Climate Change Institute | Earth Sciences/Climate Change Institute |
| Chai | Fei | Cooperating Associate Professor | School of Marine Sciences/Climate Change Institute |
| Chawathe | Sudarshan | Cooperating Associate Professor | Computer Science/Climate Change Institute |
| Davis | Ronald | Professor Emeritus of Biology and Quaternary Studies | Biological Sciences/Climate Change Institute |
| Denton | George | Professor of Geological Sciences | Earth Sciences/Climate Change Institute |
| Dieffenbacher-Krall | Ann | Assistant Research Professor | Climate Change Institute/Biological Sciences |
| Fastook | James | Cooperating Professor | Computer Science/Climate Change Institute |
| Fernandez | Ivan | Cooperating Professor | Dept. of Plant, Soil & Environmental Sciences/Climate Change Institute/Climate Change Institute/Earth Sciences |
| Hall | Brenda | Associate Professor of Glacial and Quaternary Geology | Climate Change Institute/Earth Sciences |
| Hamilton | Gordon | Research Associate Professor | Climate Change Institute |
| Handley | Michael | Laboratory Manager - Inorganic Chemistry | Climate Change Institute/Sawyer Env. Chem. Research Lab. |
| Holweger | Paul | Research Assistant | Climate Change Institute |
| Hooke | Roger | Cooperating Professor | Climate Change Institute |
| Hoyle | Gary | Artist in Residence | Climate Change Institute |
| Hughes | Terence | Professor of Quaternary Studies | Earth Sciences/Climate Change Institute |
| Introne | Douglas | Stable Isotope Technician | Climate Change Institute |
| Jacobson | George | Professor Emeritus of Quaternary Studies | Botany/Climate Change Institute |
| Jain | Shaleen | Cooperating Assistant Professor | Civil & Environmental Engineering/Climate Change Institute |
| Kates | Robert | Presidential Professor of Sustainability Science | Climate Change Institute/Senator George J. Mitchell Center for Environmental and Watershed Research |
| Keefer | David | Adjunct Professor | Climate Change Institute |
| Kelley | Alice | Research Assistant Professor | Earth Sciences/Climate Change Institute |
| Kelley | Joseph | Cooperating Professor | Earth Sciences/Climate Change Institute |
| Kellogg | Thomas | Professor Emeritus of Quaternary Studies | Earth Sciences/Climate Change Institute |
| Koons | Peter | Associate Professor | Earth Sciences/Climate Change Institute |
| Kreutz | Karl | Associate Professor | Climate Change Institute/Earth Sciences |
| Kurbatov | Andrei | Assistant Research Professor | Climate Change Institute |
| Lagerklint | Ingrid | Research Assistant Professor | Climate Change Institute |
| Lee | Betty | Financial & Outreach Manager | Climate Change Institute |
| Maasch | Kirk | Professor of Climate Change Institute and Earth Sciences | Climate Change Institute/Earth Sciences |
| Mayewski | Paul | Director/Professor of Climate Studies | Climate Change Institute/Earth Sciences |
| Meese | Debra | Research Professor | Climate Change Institute |
| Norton | Stephen | Cooperating Professor Emeritus | Earth Sciences/Climate Change Institute |
| Nurse | Andrea | Research Scientist | Climate Change Institute |



FULL ROSTER OF CLIMATE CHANGE INSTITUTE FACULTY/STAFF - continued

| Last Name | First Name | Position in Research Unit | Home (Institute/Acad Dept) |
|---------------|------------|---|---|
| Ocampo-Raeder | Constanza | Cooperating Assistant Professor | Anthropology/Climate Change Institute |
| Olsen | Brian | Research Assistant Professor | School of Biology & Ecology/Climate Change Institute |
| Oswald | Gordon | Research Professor | Climate Change Institute |
| Peterson | Michael | Cooperating Professor | Department of Mechanical Engineering/Climate Change Institute |
| Porter | Charles | Research Associate | Climate Change Institute |
| Robinson | Brian | Assistant Professor of Quaternary and Climate Studies | Anthropology/Climate Change Institute |
| Roscoe | Paul | Cooperating Professor | Anthropology/Climate Change Institute |
| Sandweiss | Daniel | Professor | Dean & Provost for Graduate Studies - Anthropology/Climate Change Institute |
| Sanger | David | Professor Emeritus of Anthropology and Quaternary Studies | Anthropology/Climate Change Institute |
| Saros | Jasmine | Associate Professor | Climate Change Institute/Biological Scs. |
| Schauffler | Molly | Research Assistant Professor | Climate Change Institute |
| Smith | Bruce | Adjunct Professor | Climate Change Institute |
| Sneed | Sharon | Laboratory Coordinator | Climate Change Institute |
| Sobolik | Kristin | Professor/Associate Director | Anthropology/Climate Change Institute |
| Sorg | Marcella | Research Associate Professor | Climate Change Institute/Anthropology/Margaret Chase Smith Policy Center |
| Stager | J.Curt | Adjunct Professor | Climate Change Institute |
| Vandergoes | Marcus | Assistant Research Professor | Climate Change Institute |
| Zaro | Gregory | Assistant Professor of Anthropology & Climate Change | Anthropology/Climate Change Institute |
| Zeder | Melinda | Adjunct Professor | Climate Change Institute |



CLIMATE CHANGE INSTITUTE E&G & MEIF FUNDED POSITIONS

Note: The Climate Change Institute faculty/staff roster numbers 55 people. Only those with CCI MEIF or CCI E&G support are listed here.

| E&G | | Grant Home |
|----------------------------------|---|------------|
| Faculty & Staff | | |
| Dieffenbacher-Krall, Ann | Assistant Research Professor (25%) | CCI |
| Denton, George | Libra Professor, Climate Change Institute & Earth Sciences (74%) | CCI |
| Hall, Brenda | Associate Professor, Climate Change Institute & Earth Sciences (70%) | CCI |
| Hughes, Terence | Professor, Climate Change Institute & Earth Sciences (55%) | CCI |
| Kreutz, Karl | Associate Professor, Climate Change Institute & Earth Sciences (100%) | CCI |
| Maasch, Kirk | Professor, Climate Change Institute & Earth Sciences (50%) | CCI |
| Robinson, Brian | Assistant Professor, Climate Change Institute & Anthropology (65%) | CCI |
| Saros, Jasmine | Associate Professor, Climate Change Institute & Biological Sciences (49.2%) | CCI |
| Sobolik, Kristin | Professor, Climate Change Institute & Anthropology (50%) | ANT |
| Zaro, Gregory | Assistant Professor, Climate Change Institute and Anthropology (50%) | CCI |
| | | |
| | | |
| Staff (not grant writers) | | |
| Addessi, Rebecca | Account Manager (100%) | |
| Lee, Betty | Financial & Outreach Manager (100%) | |

| MEIF | | Grant Home |
|----------------------------------|---|------------|
| Faculty & Staff | | |
| Dieffenbacher-Krall, Ann | Assistant Research Professor (12.5%) | CCI |
| Hamilton, Gordon | Associate Research Professor (43.49%) | CCI |
| Mayewski, Paul | Professor of Climate Change Institute (100%) | CCI |
| Koons, Peter | Professor, Climate Change Institute & Earth Sciences (24.04%) | ERS |
| Kurbatov, Andrei | Assistant Research Professor (50%) | CCI |
| Saros, Jasmine | Associate Professor, Climate Change Institute & Biological Sciences (50.8%) | CCI |
| | | |
| | | |
| Staff (not grant writers) | | |
| Holweger, Paul | Research Assistant (100%) | |
| Introne, Douglas | Stable Isotope Laboratory Manager (100%) | |
| | | |



RESEARCH, SCHOLARSHIP, & CREATIVITY

Special Recognitions/Awards/Honors Received for Research, Scholarship, Creativity during the past year

| | |
|--------------------------|--|
| Chawathe, Sudarshan S. | I was invited, as one of only three speakers in an international panel, to speak at a major symposium held to mark the beginning of construction of the Bogota (Colombia) Metro. This symposium was attended by not only academics, researchers, and practitioners interested in public transportation, and transportation in general, but also by prominent members of the government and administrative units in Bogotá, notably the mayor of Bogotá and the governor of Cudinamarca (the region around Bogotá). |
| Dieffenbacher-Krall, Ann | In recognition of my work on chironomid-climate transfer functions for Southern Patagonia, I was requested to present as an "invited author" at the August 2010 AGU Meeting of the Americas in Brazil. I have been invited to present a workshop on statistical analysis of environmental data by GNS Science, New Zealand, in January 2011. |
| Hall, Brenda | Chosen as U.S. Representative to the Scientific Committee on Antarctic Research by the Polar Research Board of the National Academy of Sciences Featured scientific story on National Science Foundation website |
| Kelley, Joseph | Board Member, Penobscot Valley Chapter of Maine Audubon Society 2010- present. Research Fellow, Program for the Study of Developed Shorelines Western Carolina University, 2010-present |
| Mayewski, Paul | (1) The Seligman Crystal - awarded every 2 or more years by the International Glaciological Society. It is the highest award in the field of glaciology. It was awarded officially in late May 2010 in Tromso, Norway. (2) Maine Distinguished Professor 2010. (3) Recognition by the International Polar Year Committee for research contributions made during the IPY. |
| Olsen, Brian | Graduate Mentor Award |
| Roscoe, Paul B. | Presidential Research and Creative Achievement Award, University of Maine |

PUBLICATIONS: ABSTRACTS/BOOKS/BOOK CHAPTERS/JOURNAL ARTICLES/ POSTER/PROCEEDINGS/TECHNICAL REPORTS

| Name | Type | Status | Citation | Refereed | Category | GS | US |
|--------------------|-----------------|---------------|---|-----------------|-----------------|-----------|-----------|
| Belknap, Daniel F. | Journal Article | Published | Wilson, K.R., Kelley, J.T., Croitoru, A., Dionne, M., Belknap, D.F. and Steneck, R.S., 2009, Stratigraphic and ecophysical characterizations of salt pools: dynamic features of the Webhannet Estuary salt marsh, Wells, Maine, USA: Estuaries and Coasts, v. 32, no. 5, p. 855-870. DOI 10.1007/s12237-009-9203-7. August 4. Impact Factor 1.56. http://www.erf.org/estuaries-coasts | Yes | Basic | 1 | 0 |
| Belknap, Daniel F. | Journal Article | Published | Sandweiss, D.H., Kelley, A.R., Belknap, D.F., Kelley, J.T., Rademaker, K. and Reid, D.A., 2010, GPR identification of an early monument at Los Morteros in the Peruvian coastal desert: Quaternary Research, v. 73, p. 439-448. DOI: 10.1016/j.yqres.2010.03.002. May. Impact Factor 2.457. http://www.elsevier.com/wps/find/journaldescription.cws_home/622937/description#description1 | Yes | Basic | 1 | 1 |
| Belknap, Daniel F. | Journal Article | Accepted | Kelley, J.T., Belknap, D.F. and Claesson, S., 2010 in press, Drowned coastal deposits with associated archaeological remains from a sea-level "slowstand": Northwestern Gulf of Maine, USA: Geology, v. , p. 5-yr Impact Factor 4.212. http://prxy4.ursus.maine.edu:2311/ | Yes | Basic | 0 | 0 |
| Belknap, Daniel F. | Journal Article | Accepted | Wilson, K.R., Kelley, J.T., Tanner, B.R. and Belknap, D.F., 2010 in press, Probing the origins and stratigraphic signature of salt pools from north-temperate marshes in Maine, U.S.A.: Journal of Coastal Research, v. , p. . Impact Factor 0.517 http://www.jcronline.org/ | Yes | Basic | 1 | 0 |
| Belknap, Daniel F. | Journal Article | Published | Brothers, L.L., Kelley, J.T., Maynard, M.L., Belknap, D.F. and Dickson, S.M., 2010, Development in the Gulf of Maine: avoiding geohazards and embracing opportunities: Maine Policy Review, V. 19, No. 1, p. 46-57. Winter/Spring. http://mcpolicycenter.umaine.edu/?q=MPRcurrent-issue | | Applied | 1 | 0 |
| Belknap, Daniel F. | Abstract | Published | Belknap, D.F., 2009, Geological preservation potential of coastal and submerged archaeological sites: Geological Society of America Abstracts with Programs, v. 41, no. 7, A23-1, p. 75. Annual Meeting, Portland, OR, October 18-21, 2009. http://www.geosociety.org/meetings/searchabstracts.htm | Yes | Basic | 0 | 0 |
| Belknap, Daniel F. | Abstract | Published | Leach, P.A. and Belknap, D.F., 2009, Multiple phases in the marine transgression of coastal archaeological sites in Maine and Delaware: Geological Society of America Abstracts with Programs, v. 41, no. 7, A23-7, p. 76. Annual Meeting, Portland, OR, October 18-21, 2009. http://www.geosociety.org/meetings/searchabstracts.htm | Yes | Basic | 0 | 0 |
| Belknap, Daniel F. | Abstract | Published | Kelley, J.T., Belknap, D.F., and Claesson, S., 2009, Drowned archaeological site potential in the western Gulf of Maine: Geological Society of America Abstracts with Programs, v. 41, no. 7, A48-3, p. 156. Annual Meeting, Portland, OR, October 18-21, 2009. http://www.geosociety.org/meetings/searchabstracts.htm | Yes | Basic | 0 | 0 |
| Belknap, Daniel F. | Abstract | Published | Brothers, L.L., Kelley, J.T., Belknap, D.F., Barnhardt, W.A. and Andrews, B.D., 2009, Pockmarks and shallow natural gas: threats to offshore infrastructure development: Geological Society of America Abstracts with Programs, v. 41, no. 7, A179-10, p. 474. Annual Meeting, Portland, OR, October 18-21, 2009. http://www.geosociety.org/meetings/searchabstracts.htm | | Basic | 1 | 0 |
| Belknap, Daniel F. | Abstract | Published | Brothers, L.L., Kelley, J.T., Belknap, D.F., Koons, P.O. and Barnhardt, W.A., 2010, Pockmarks: self-scouring mud landforms?: Geological Society of America Abstracts with Programs, v. 42, no. 1, A6-4, p. 60. NE-SE Joint Section Meeting, Baltimore, MD, March 13-17, 2010. http://www.geosociety.org/meetings/searchabstracts.htm | Yes | Basic | 1 | 0 |
| Belknap, Daniel F. | Abstract | Published | Kelley, J.T., Belknap, D.F., Brothers, L.L. and Clarke, J.H., 2010, Somes Sound: pockmarks in a fjord-like embayment surrounded by Acadia National Park: Geological Society of America Abstracts with Programs. v. 42. no. | Yes | Basic | 1 | 0 |



| | | | | | | | | |
|--------------------|-----------------|-----------|---|-----|-------|---|---|--|
| | | | 1, A31-10, p. 103. NE-SE Joint Section Meeting, Baltimore, MD, March 13-17, 2010 http://www.geosociety.org/meetings/searchabstracts.htm | | | | | |
| Belknap, Daniel F. | Abstract | Published | Belknap, D.F., Kelley, J.T., Cooper, J.A.G., Jackson, D.W.T., and McKenna, J., 2010, Comparison of glaciomarine seismic stratigraphy of the northwestern Irish coast with coastal Maine, USA: Geological Society of America Abstracts with Programs, v. 42, no. 1, A46-6, p. 127. NE-SE Joint Section Meeting, Baltimore, MD, March 13-17, 2010. http://www.geosociety.org/meetings/searchabstracts.htm | Yes | Basic | 0 | 0 | |
| Belknap, Daniel F. | Abstract | Published | Wilson, K.R., Kelley, J.T., Belknap, D.F., Hamilton, G.S. and Loftin, C.S., 2010, Are Maine's salt marshes drowning? Salt pools as dynamic drivers of Surficial change for six Maine salt marshes: Geological Society of America Abstracts with Programs, v. 42, no. 1, A48-4, p. 129-130. NE-SE Joint Section Meeting, Baltimore, MD, March 13-17, 2010. http://www.geosociety.org/meetings/searchabstracts.htm | Yes | Basic | 1 | 0 | |
| Belknap, Daniel F. | Abstract | Submitted | Wilson, K.R., Kelley, J.T., Reeve, A.S., and Belknap, D.F., 2010, Does groundwater flow control surficial salt marsh pool morphology? A case study from Grand Marsh, Gouldsboro, ME: New England Estuarine Research Society, Spring Meeting, St. Andrews-by-the-Sea, New Brunswick, Canada, 13-16 May, 2010. http://www.neers.org/main/meetings/meetingindex.htm | | | 1 | 0 | |
| Chai, Fei | Journal Article | Published | Xiu, P. and F. Chai (2010): Modeling the effects of size on patch dynamics of an inert tracer. Ocean Science, 6, 1-9. | Yes | Basic | 0 | 0 | |
| Chai, Fei | Journal Article | Published | Xiu, P, F. Chai, L. Shi, H. Xue, Y. Chao (2010): A census of eddy activities in the South China Sea during 1993-2007. Journal of Geophysical Research, Vol. 115, C03012,doi:10.1029/2009JC005657. | Yes | Basic | 0 | 0 | |
| Chai, Fei | Journal Article | Published | Fujii, M. and F. Chai (2009): Influences of initial plankton biomass and mixed-layer depths on the outcome of iron-fertilization experiments. Deep-Sea Research II, doi:10.1016/j.dsr2.2009.07.007. | Yes | Basic | 0 | 0 | |
| Chai, Fei | Journal Article | Published | Xiu, P., Y. Liu, G. Li, Q. Xu, Z. Rong, X. Yin, F. Chai (2009): Deriving depths of deep chlorophyll maximum and water inherent optical properties: A regional model. Continental Shelf Research, 29, 2270-2279. | Yes | Basic | 0 | 0 | |
| Chai, Fei | Journal Article | Published | Zhang, W-Z, H. Hong, S. Shang, X. Yan, F. Chai (2009): Strong southward transport events due to typhoons in the Taiwan Strait. Journal of Geophysical Research, 114, C11013, doi:10.1029/2009JC005372. | Yes | Basic | 0 | 0 | |
| Chai, Fei | Journal Article | Published | Chai, F. G. Liu, H. Xue, L. Shi, Y. Chao, C-T Tseng, W-C Chou, and K-K Liu (2009): Seasonal and Interannual Variability of Carbon Cycle in South China Sea: a Three-Dimensional Physical-Biogeochemical Modeling Study. Journal of Oceanography, Vol. 65, pp. 703 to 720. | Yes | Basic | 0 | 0 | |
| Chai, Fei | Journal Article | Published | Fujii, M., F. Chai, L. Shi, H. Inoue, and M. Ishii (2009): Seasonal and interannual variability of carbon cycling in western and central tropical-subtropical Pacific: a Physical-Biogeochemical Modeling Study. Journal of Oceanography, Vol. 65, pp. 689-701. | Yes | Basic | 0 | 0 | |
| Chai, Fei | Journal Article | Published | Bidigare, R.R., F. Chai, M. R. Landry, R. Lukas, C. Hannides, S. J. Christensen, D.M. Karl, L.Shi and Y. Chao (2009): Subtropical ocean ecosystem structure changes forced by North Pacific climate variations. Journal of Plankton Research, Vol. 31, No. 10, 1131-1139. | Yes | Basic | 0 | 0 | |
| Chai, Fei | Journal Article | Published | Kueh, Mien-Tze, Chung-Hsiung Sui, Kon-Kee, Liu, and Fei Chai (2010): On the Upper Ocean Thermal Structure in a Western North Pacific Ocean Model: Model Evaluation and Sensitivity Study. Terr. Atmos. Ocean. Sci., Vol. No. 1, xxxx-xxxx, February 2010. Doi:10.3319/TAO.2009.06.03.01. | Yes | Basic | 0 | 0 | |
| Chai, Fei | Journal Article | Published | Liu, G., H. Li, H. Wang, F. Chai (2010): Review on the Ecological Dynamics Studies of Green Tide. Advances in Earth Science, Vol. 25, No. 2, Feb. 2010. | Yes | Basic | 0 | 0 | |

| | | | | | | | |
|--------------------------|-----------------|-----------|--|-----|-------|---|---|
| Chai, Fei | Journal Article | Accepted | Brzezinski, M.A., S.B. Baines, W.M. Balch, C.P. Beucher, F. Chai, R.C. Dugdale, J.W. Krause, M.R. Landry, A. Marchi, C. Measures, D.M. Nelson, A. Parker, A. Poulton, K. Selph, P. Strutton, A. Taylor, B. Twining (2010): Co-limitation of diatoms by iron and silicic acid in the equatorial Pacific. Deep Sea Res. II, in press. | Yes | Basic | 0 | 0 |
| Chai, Fei | Journal Article | Accepted | Dugdale, R.C., F. Chai, R. Feely, C. Measures, A. Parker, F. Wilkerson (2010): The regulation of equatorial Pacific new production and pCO ₂ by silicate-limited diatoms. Deep Sea Res. II, in press. | Yes | Basic | 0 | 0 |
| Chai, Fei | Journal Article | Accepted | Palacz, A., F. Chai, R.C. Dugdale, C.I. Measures (2010): Estimating iron and aluminum removal rates in the eastern equatorial Pacific Ocean using a box model approach. Deep Sea Res. II, in press. | Yes | Basic | 1 | 0 |
| Chawathe, Sudarshan S. | Proceedings | Published | Effective Whitelisting for Filesystem Forensics. Sudarshan S. Chawathe. In Proceedings of the 7th IEEE Intelligence and Security Informatics Conference (ISI), Richardson, Texas, June 2009. http://cs.umaine.edu/~chaw/pubs/ | Yes | | 0 | 0 |
| Chawathe, Sudarshan S | Proceedings | Published | Low-Latency Indoor Localization Using Bluetooth Beacons Sudarshan S. Chawathe. In Proceedings of the 12th International IEEE Conference on Intelligent Transportation Systems (ITSC), St. Louis, Missouri, October 2009. http://cs.umaine.edu/~chaw/pubs/ | Yes | | 0 | 0 |
| Denton, George | Journal Article | Published | Schaefer, J.M., Denton, G.H., Kaplan, M., Putnam, A.,E. et al., 2009, High-frequency Holocene glacier fluctuations in New Zealand differ from the northern signal. Science 324, 622-625. | Yes | Basic | 1 | 0 |
| Denton, George | Journal Article | Published | Cheng, H., Edwards, R.L., Broecker, W.S., Denton, G.H., Kong, X., Wang, Y., Zhang, R., Wang, X., 2009, Ice-age terminations. Science 326, 248-252. | Yes | Basic | 0 | 0 |
| Denton, George | Journal Article | Accepted | Denton, G.H., Anderson, R.F., Toggweiler, J.R., Edwards, R.L., Schaefer, J.M., Putnam, A.E., 2010, The last glacial termination. Science. | Yes | Basic | 1 | 0 |
| Denton, George | Journal Article | Accepted | Putnam, A.E., Schaefer, J.M., Barrell, D.J.A., Vandergoes, M., Denton, G.H., Kaplan, M.R., Finkel, R.C., Schwartz R., Goehring, B.M., and Kelley, S.E., 2010, In situ cosmogenic ¹⁰ Be production-rate calibration from the Southern Alps, New Zealand. Quaternary Geochronology. doi:10.1016/j.quageo.2009.12.001 | Yes | Basic | 2 | 0 |
| Denton, George | Journal Article | Published | Broecker, W.S., Denton, G.H., Edwards, R.L., Cheng, H., Alley, R.B., and Putnam, A.E., 2010, Putting the Younger Dryas event into context, Quaternary Science Reviews 29, 1078-1081. | Yes | Basic | 1 | 0 |
| Denton, George | Journal Article | Accepted | Hall, B.L., Baroni, C., and Denton, G.H., 2010, Relative sea-level changes, Schuchert Dal, East Greenland, with implications for ice extent in late-glacial and Holocene times. Quaternary Science Reviews. doi:10.1016/j.quascirev.2010.03.013 | Yes | Basic | 0 | 0 |
| Denton, George | Journal Article | Accepted | Hall, B.L., Koffman, T., and Denton, G.H., 2010, Reduced ice extent on the western Antarctic Peninsula during the Medieval Warm Period. Geology, in press. | Yes | Basic | 1 | 0 |
| Dieffenbacher-Krall, Ann | Journal Article | Accepted | Zink, K.-G., M.J. Vandergoes, K. Mangelsdorf, A.C. Dieffenbacher-Krall, and L. Schwark. Accepted. Application of bacterial glycerol dialkyl glycerol tetraethers (GDGTs) to develop modern and past temperature estimates from New Zealand lakes. Organic Geochemistry, IMOG 2009 Special Issue. | Yes | | 0 | 0 |
| Fastook, James L. | Journal Article | Submitted | A Sargent and J L Fastook, Manufactured analytical solutions for isothermal full-Stokes ice sheet models, submitted to CRYOSPHERE | Yes | | 1 | 0 |
| Fastook, James L. | Book Chapter | Published | T Arbetter, R Arthern, C Barbante, R Bargagli, D Bergstrom, N Bertler, R Bindshadler, J Bockheim, C Boutron, D Bromwich, S Chown, A Clarke, J Comiso, P Convey, A Cook, G di Prisco, E Fahrbach, J Fastook, A Fleming, M Gugliemini, J Gutt, H Hellmer, F Hennion, K Heywood, D Holland, A Huiskes, A Jenkins, A Jones, A Lenton, D Hodson, S Hong, S Jacobs, K Linse, G Marshall, P Mavewski, M Meredith, N Metzler, A Monaghan, A Naveira- | Yes | | 0 | 0 |



| | | | | | | |
|-------------------|-----------------|-----------|---|-----|---|---|
| | | | Garabato, S Rintoul, H Roscoe, J Shanklin, T Scambos, M Sparrow, K Speer, M Stevens, C Summerhayes, J Turner, K van der Veen, D Vaughan, C Verde, Z Wang, D Webb, P Woodworth, T Worby, R Worland, and T Yamanouchi. Observations, data accuracy and tools. In J Turner and R Bindschadler, editors, Antarctic Climate Change and the Environment, chapter 2, pages 33–114. Scientific Committee on Antarctic Research, Scott Polar Research Institute, Lenseld Road, Cambridge, UK, 2009. | | | |
| Fastook, James L. | Book Chapter | Published | B Adams, R Arthern, A Atkinson, C Barbante, R Bargagli, D Bergstrom, N Bertler, R Bindschadler, J Bockheim, C Boutron, D Bromwich, S Chown, J Comiso, P Convey, A Cook, G di Prisco, E Fahrbach, J Fastook, J Forcarda, JM Gili, M Gugliemin, J Gutt, H Hellmer, F Hennion, K Heywood, D Hodgson, D Holland, S Hong, A Huiskes, E Isla, S Jacobs, A Jones, A Lenton, G Marshall, P Mayewski, M Meredith, N Metzl, A Monaghan, A Naveira-Garabato, K Newsham, C Orejas, L Peck, H-O Portner, S Rintoul, S Robinson, H Roscoe, S Rossi, T Scambos, J Shanklin, V Smetacek, K Speer, M Stevens, C Summerhayes, P Trathan, J Turner, K van der Veen, D Vaughan, C Verde, D Webb, C Wiencke, P Woodworth, T Worby, R Worland, and T Yamanouchi. The instrumental period. In J Turner and R Bindschadler, editors, Antarctic Climate Change and the Environment, chapter 4, pages 183–297. Scientific Committee on Antarctic Research, Scott Polar Research Institute, Lenseld Road, Cambridge, UK, 2009. | Yes | 0 | 0 |
| Fastook, James L. | Proceedings | Published | J L Fastook, J W Head, D Marchant, and F Forget. Glacial flow modeling on mars. In Portland GSA Annual Meeting (18-21 October), 2009. | | 0 | 0 |
| Fastook, James L. | Proceedings | Published | J L Fastook. Answering the call: The dilemma of resolution: How good is good enough: A case study from greenland. In West Antarctic Ice Sheet Initiative Workshop, 2009. | | 0 | 0 |
| Fastook, James L. | Proceedings | Published | J L Fastook. The dilemma of resolution: How good is good enough: A case study from Greenland. In Fall AGU (Dec 14-18), 2009. | | 0 | 0 |
| Fastook, James L. | Proceedings | Published | J L Fastook, J W Head, JB Madeleine, F Forget, and D Marchant. Modeling an ice-rich lobate debris apron in deuterionilus. Lunar and Planetary Science XXXXI, #1823, 2010. | | 0 | 0 |
| Fernandez, Ivan | Journal Article | Accepted | Nelson, S.J., I.J. Fernandez, and J.S. Kahl. 2010. A review of mercury concentration and deposition in snow in eastern temperate North America. Hydrolog. Proc. 24:(in press). | Yes | 0 | 0 |
| Fernandez, Ivan | Journal Article | Accepted | Sarah E. Godsey, Wenche Aas, Thomas A. Clair, Heleen A. de Wit, Ivan J. Fernandez, J. Steve Kahl, Iain A. Malcolm, Colin Neal, Margaret Neal, Sarah J. Nelson, Stephen A. Norton, Marisa C. Palucis, Brit Lisa Skjelkvåle, Chris Soulsby, Doerthe Tetzlaff, and James W. Kirchner. 2010. Generality of fractal 1/f scaling in catchment tracer time series and its implications for catchment travel time distributions. Hydrological Processes 24: (in press). | Yes | 0 | 0 |
| Fernandez, Ivan | Journal Article | Submitted | Goodale, C.L., R. Q. Thomas, F. Dentener, M.B. Adams, J.S. Baron, B.A. Emmett, C. D. Evans, I. J. Fernandez, P. Gundersen, F. Hagedorn, G. M. Lovett, A. Kulmatiski, S. G. McNulty, A.M. Melvin, F. Moldan, S. V. Ollinger, P. Schleppei, and M. S. Weiss. Nitrogen deposition and forest carbon sequestration: a quantitative synthesis from plot to global scales. Global Change Biology (submitted). | Yes | 0 | 0 |
| Fernandez, Ivan | Journal Article | Published | Dail, David Bryan, David Y. Hollinger, Eric A. Davidson, Ivan J. Fernandez, Herman C. Sievering, Neal A. Scott, and Elizabeth Gaige. 2009. Distribution of nitrogen-15 tracers applied to the canopy of a mature spruce-hemlock stand, Howland, Maine, USA. Oecologia 160:589-599. | Yes | 1 | 0 |
| Fernandez, Ivan | Journal Article | Published | Bethers, Suzanne, Michael E. Day, G. Bruce Wiersma, Ivan J. Fernandez and J. Alexander Elvir. 2009. Effects of chronically elevated nitrogen and sulfur deposition on sugar maple saplings: nutrition, growth and physiology. For. Ecol. Manag. 258:895-902. | Yes | 1 | 0 |
| Fernandez, Ivan | Journal Article | Published | SanClements. Michael D.. Ivan J. Fernandez. and Stephen A. Norton. 2009. Mechanisms defining spatial patterns in | Yes | 1 | 0 |



| | | | | | | | | | |
|-----------------|-----------------|-----------|---|-----|-------|--|---|---|--|
| | | | P fractions in a forest lake watershed at Acadia National Park, Maine, USA. <i>For. Ecol. Manag.</i> 258:2318-2325. | | | | | | |
| Fernandez, Ivan | Journal Article | Published | Evans, Chris D., Christine L. Goodale, Simon J.M. Caporn, Nancy B. Dise, Bridget A. Emmett, Ivan J. Fernandez, Chris D. Field, Stuart E.G. Findlay, Gary M. Lovett, Henning Meeseburg, Filip Moldan, and Lucy J. Sheppard. 2009. Does elevated nitrogen deposition or ecosystem recovery from acidification drive increased dissolved organic carbon loss from upland soil? A review of evidence from field nitrogen addition experiments. <i>Biogeochem.</i> 91:13–35. | Yes | | | 0 | 0 | |
| Fernandez, Ivan | Journal Article | Published | Navrátil, Tom, Jan Rohovec, Aria Amirbahman, Stephen A. Norton, and Ivan J. Fernandez. 2009. Amorphous aluminum hydroxide control on sulfate and phosphate in sediment-solution systems. <i>Water Air Soil Pollut</i> 210:87-98. | Yes | | | 0 | 0 | |
| Fernandez, Ivan | Book Chapter | Accepted | Amirbahman, Aria and Ivan J. Fernandez. 2010. Mercury in Soils. In: <i>Mercury in the Environment: Pattern and Process</i> . Michael S. Bank (ed.). University of California Press, Berkeley, CA. (in press). | Yes | | | 0 | 0 | |
| Fernandez, Ivan | Abstract | Published | Fatemi, Farrah R., Ivan J. Fernandez, Kevin S. Simon, D. Bryan Dail, and Lindsey E. Rustad. 2009. The Effect of Nutrient Availability On Soil Extracellular Enzyme Activity and CNP Dynamics.. (Paper 113-2). Presented at the ASA-CSSA-SSSA International Meetings. Pittsburgh, PA. November 1-4.. [CD-ROM]. ASA, CSSA, SSSA, Madison, WI. | | | | 1 | 0 | |
| Fernandez, Ivan | Abstract | Published | Burke, Andrea M., Ivan J. Fernandez, Aaron Weiskittel, and Robert Wagner. 2009. Predicting differences in forest stand nutrient uptake and removal: Potential effects of increased biomass removals for energy on long-term site sustainability. (Paper 346-10). Presented at the ASA-CSSA-SSSA International Meetings. Pittsburgh, PA. November 1-4. [CD-ROM]. ASA, CSSA, SSSA, Madison, WI. | | | | 1 | 0 | |
| Fernandez, Ivan | Abstract | Published | Fatemi, Farrah R., Ivan J. Fernandez, Kevin S. Simon, and D. Bryan Dail. 2009. Soil extracellular enzyme activities as indices of microbial nutrient limitation and soil CNP dynamics. <i>Soil Ecology Society Conference</i> . Burlington, Vermont. July 12-15. | | | | 1 | 0 | |
| Fernandez, Ivan | Abstract | Published | SanClements, Michael D., Ivan J. Fernandez, Stephen A. Norton and Lindsey E. Rustad. 2009. Decadal responses in stream and soil Ca and Mg in an experimentally acidified watershed in the eastern United States. <i>BIOGEOMON</i> 2009. June 29-July 3. Helsinki, Finland. | | | | 1 | 0 | |
| Fernandez, Ivan | Abstract | Published | Norton, Stephen A., Jirí Kopáček, Tomáš Navrátil, Ivan J. Fernandez, and Aria Amirbahman. 2009. Evolution of controls on phosphorus availability in aquatic ecosystems: peri-glacial to recent times. <i>BIOGEOMON</i> 2009. June 29-July 3. Helsinki, Finland. | | | | 0 | 0 | |
| Fernandez, Ivan | Abstract | Published | Navrátil, T., S. A. Norton, and I. J. Fernandez. 2009. Seasonal and long-term variation of stream water chemistry at Bear Brook Watershed, Maine USA. <i>BIOGEOMON</i> 2009. June 29-July 3. Helsinki, Finland. | | | | 0 | 0 | |
| Hall, Brenda | Journal Article | Published | Bromley, G., Schaefer, G., Winckler, G., Hall, B., Todd, C., and Rademaker, K., 2009. Relative timing of the last glacial maximum and late glacial events in the tropical Andes, <i>Quaternary Science Reviews</i> 28, 2514-2526. | Yes | Basic | | 2 | 0 | |
| Hall, Brenda | Journal Article | Accepted | De Bruyn, M., Hall, B., Chauke, L., Baroni, C., Koch, P., and Hoelzel, A., 2009. Rapid response of a marine mammal species to Holocene climate and habitat change. <i>PLoS Genetics</i> 5, 1-11. | Yes | Basic | | 0 | 0 | |
| Hall, Brenda | Journal Article | Published | Hall, B., 2009. Holocene glacial history of Antarctica and the subantarctic islands. <i>Quaternary Science Reviews</i> 28, 2213-2230. | Yes | Basic | | 0 | 0 | |
| Hall, Brenda | Journal Article | Accepted | Todd, C., Stone, J., Conway, H., Hall, B., and Bromley, G., 2010. Late Quaternary evolution of Reedy Glacier, Antarctica. <i>Quaternary Science Reviews</i> , in press. | Yes | Basic | | 2 | 0 | |



| | | | | | | | |
|------------------|-----------------|-----------|--|-----|-------|---|---|
| Hall, Brenda | Journal Article | Accepted | Hall, B., Henderson, G., Baroni, C., and Kellogg, T., 2010. Constant Holocene Southern Ocean 14C reservoir ages and ice-shelf flow rates. <i>Earth and Planetary Science Letters</i> , in press. | Yes | Basic | 0 | 0 |
| Hall, Brenda | Journal Article | Accepted | Hall, B., Koffman, T., and Denton, G., 2010. Reduced ice extent on the western Antarctic Peninsula at 700-970 cal yr B.P. <i>Geology</i> , in press. | Yes | Basic | 0 | 1 |
| Hall, Brenda | Journal Article | Accepted | Hall, B., Baroni, C., and Denton, G., 2010. Relative sea-level changes, Schuchert Dal, East Greenland, with implications for ice extent in late-glacial and Holocene time. <i>Quaternary Science Reviews</i> , in press. | Yes | Basic | 0 | 0 |
| Hall, Brenda | Journal Article | Submitted | Hall, B., Denton, G., Fountain, A., Hendy, C., and Henderson, G., 2010. Antarctic lakes suggest millennial reorganizations of Southern Hemisphere atmospheric circulation. <i>PNAS</i> , submitted. | Yes | Basic | 0 | 0 |
| Hall, Brenda | Journal Article | Submitted | Hall, B., 2010. Holocene relative sea-level changes in the South Shetland Islands. <i>Global and Planetary Change</i> , submitted. | Yes | Basic | 0 | 0 |
| Hall, Brenda | Journal Article | Submitted | Burgess, S., Henderson, G., and Hall, B., 2010. Reconstructing Holocene conditions under the McMurdo Ice Shelf using Antarctic barnacle shells. <i>Earth and Planetary Science Letters</i> , submitted. | Yes | Basic | 0 | 0 |
| Hall, Brenda | Journal Article | Submitted | Bromley, G., Hall, B., Schaefer, J., Winckler, G., Todd, C., and Rademaker, K., 2010. Late glacial advance in the tropical Andes. <i>Journal of Quaternary Science</i> , submitted. | Yes | Basic | 2 | 0 |
| Hall, Brenda | Journal Article | Published | Bromley, G., Hall, B., Stone, J., Conway, H., and Todd, C., 2010. Late Cenozoic deposits at Reedy Glacier, Transantarctic Mountains: Implications for former thickness of the West Antarctic Ice Sheet. <i>Quaternary Science Reviews</i> 29, 384-398. | Yes | Basic | 2 | 0 |
| Hall, Brenda | Book Chapter | Submitted | Hall, B., 2010. Proglacial lakes. In Haritashya et al. (eds). <i>Encyclopedia of Snow, Ice, and Glaciers</i> . Springer-Verlag, Heidelberg, Germany, in review. | Yes | Basic | 0 | 0 |
| Hall, Brenda | Abstract | Published | Stone, J., Conway, H., Cowdery, S., Hall, B., and Bromley, G., 2009. Deglaciation of the Ross Sea: A view from Scott and Beardmore Glaciers. 16th Annual WAIS Meeting, Seattle, WA. | | Basic | 2 | 0 |
| Hall, Brenda | Abstract | Submitted | Hall, B., Stone, J., Conway, H., Bromley, G., Todd, C., and Cowdery, S., 2010. Deglaciation of the Ross Sea: Implications for the behavior of the West Antarctic Ice Sheet and sea-level change. PALSEA Conference, Bristol, U.K. | | Basic | 2 | 0 |
| Hamilton, Gordon | Journal Article | Published | Breton, D.J., & G.S. Hamilton. 2009. Design, optimization and calibration of an automated density gauge for firn and ice cores. <i>Journal of Glaciology</i> , 55(194), 1092-1100. | Yes | Basic | 1 | 0 |
| Hamilton, Gordon | Journal Article | Published | Straneo, F., G.S. Hamilton, D.A. Sutherland, L.A. Stearns & A. Rosing-Asvid. 2010. Rapid circulation of warm subtropical waters in a major glacial fjord in East Greenland. <i>Nature Geoscience</i> , 3, 182-186, doi:10.1038/ngeo764. | Yes | Basic | 0 | 0 |
| Hamilton, Gordon | Journal Article | Published | Spaulding, N.E., D.A. Meese, I. Baker, P.A. Mayewski and G.S. Hamilton. 2010. A new technique for firn grain-size measurement using SEM image analysis. <i>Journal of Glaciology</i> , 56(195), 12-19. | Yes | Basic | 1 | 0 |
| Hamilton, Gordon | Journal Article | Accepted | Andersen, M.L., T. Larsen, M. Nettles, P. Elosegui, D. van As, G.S. Hamilton, L.A. Stearns, J. Davis, A. Ahlstrøm, J. de Juan, G. Ekstrom, L. Stenseng, S.A. Khan, R. Forsberg, D. Dahl-Jensen. 2010. Spatial and temporal melt variability at Helheim Glacier, East Greenland, and its effect on ice dynamics. <i>Journal of Geophysical Research</i> . | Yes | Basic | 0 | 0 |
| Hamilton, Gordon | Journal Article | Accepted | De Juan, J., P. Elosegui, Nettles, M., J.L. Davis, G.S. Hamilton, T. Larsen, L.A. Stearns, A. Ahlstrøm, M.L. Andersen, S.A. Khan, L. Stenseng, G. Ekstrom & R. Forsberg. 2010. Sudden increase in tidal response linked to calving and acceleration at a large Greenland outlet glacier. <i>Geophysical Research Letters</i> . | Yes | Basic | 0 | 0 |



| | | | | | | |
|------------------|-----------------|-----------|---|-------|---|---|
| Hamilton, Gordon | Abstract | Published | Hamilton, G.S., L.A. Stearns and D.C. Finnegan. 2009. Terrestrial LiDAR Measurements on a Large East Greenland Outlet Glacier. <i>Eos Trans. AGU</i> , 90(52), Fall Meet. Suppl., Abstract G53E-03. | Basic | 0 | 0 |
| Hamilton, Gordon | Abstract | Published | Hamilton, G.S., F. Straneo, D.A. Sutherland and L.A. Stearns. 2010. Did changes in the subpolar North Atlantic trigger the acceleration of glaciers in Greenland? <i>Eos Trans. AGU</i> , 91(26), Ocean Sci. Meet. Suppl., Abstract PO53A-04. | Basic | 0 | 0 |
| Hamilton, Gordon | Abstract | Published | Andersen, M.L., A. Ahlstrøm, T. Larsen, Nettles, M., P. Elosegui, G.S. Hamilton, L.A. Stearns, J.L. Davis, J. de Juan, S.A. Khan, L. Stenseng, G. Ekstrom & R. Forsberg. 2009. Surface Melt and its Effect on Helheim Glacier Dynamics. <i>Eos Trans. AGU</i> , 90(52), Fall Meet. Suppl., Abstract C21D-0465. | Basic | 0 | 0 |
| Hamilton, Gordon | Abstract | Published | Breton, D.B. and G.S. Hamilton. 2009. Accumulation Rate Effects on High Precision Density Profiles of Antarctic Firn Cores. <i>Eos Trans. AGU</i> , 90(52), Fall Meet. Suppl., Abstract C52A-06. | Basic | 1 | 0 |
| Hamilton, Gordon | Abstract | Published | De Juan, J. P. Elosegui, J.L. Davis, G.S. Hamilton, L.A. Stearns, Nettles, M., T.B. Larsen, A.P. Ahlstrom, J.L. Davis, M.L. Andersen, S.A. Khan, L. Stenseng, G. Ekstrom & R. Forsberg. 2009. Ocean tides modulation of flow at Helheim Glacier, East Greenland, observed using GPS. <i>Eos Trans. AGU</i> , 90(52), Fall Meet. Suppl., Abstract C11A-01. | Basic | 0 | 0 |
| Hamilton, Gordon | Abstract | Published | Hall, M.L., G.S. Hamilton and S.A. Arcone. 2009. Accumulation Rate Variability along Norway-US Traverse Route, East Antarctica. <i>Eos Trans. AGU</i> , 90(52), Fall Meet. Suppl., Abstract C31D-0460 | Basic | 1 | 0 |
| Hamilton, Gordon | Abstract | Published | Nettles, M., T.B. Larsen, P. Elosegui, G.S. Hamilton, L.A. Stearns, A.P. Ahlstrom, J.L. Davis, M.L. Andersen, J. de Juan, S.A. Khan, L. Stenseng, G. Ekstrom & R. Forsberg. 2009. Geodetic observations of short-time-scale changes in glacier flow at Helheim and Kangerdlugssuaq Glaciers, East Greenland. <i>Eos Trans. AGU</i> , 90(52), Fall Meet. Suppl., Abstract C11A-02. | Basic | 0 | 0 |
| Hamilton, Gordon | Abstract | Published | Schild, K.S., G.S. Hamilton and L.A. Stearns. 2009. Environmental controls on calving events in Greenland. <i>Eos Trans. AGU</i> , 90(52), Fall Meet. Suppl., Abstract C21D-0462. | Basic | 1 | 0 |
| Hamilton, Gordon | Abstract | Published | Stearns, L.A., G.S. Hamilton and B.E. Smith. 2009. Subglacial lake outburst floods and Antarctic ice dynamics. <i>Eos Trans. AGU</i> , 90(52), Fall Meet. Suppl., Abstract C34A-08. | Basic | 0 | 0 |
| Hooke, Roger | Journal Article | Submitted | Hanson, B., and Hooke, R. LeB., 2010, Effects of sea level lowering on ELA depression during the LGM: Quaternary Research, | Yes | 0 | 0 |
| Hooke, Roger | Journal Article | Submitted | Hooke, R. LeB., Martin-Duque, J.F., and Pedraza, J., 2010, Land Transformation and Population: Two neglected elements of Global Change: <i>GSA Today</i> (in revision), | Yes | 0 | 0 |
| Hooke, Roger | Journal Article | Submitted | Hooke, R. LeB. and Winski, D., 20xx, Unroofing Maine: A comparison of four erosion laws over 400 my. <i>Geology</i> (submitted and in revision) | Yes | 1 | 0 |
| Hughes, Terence | Journal Article | In Review | Hughes, T., 2009. Modeling ice sheets from the bottom up. <i>Quaternary Science Reviews</i> , 28:1831-1849. | Basic | 0 | 2 |
| Hughes, Terence | Journal Article | In Review | Hughes, T., 2010. Glacier Motion/Ice Velocity, in <i>Encyclopedia of Snow, Ice, and Glaciers</i> , edited by U.K. Haritashya, P. Singh, and V.P. Singh, Springer. | Basic | 0 | 2 |
| Hughes, Terence | Journal Article | In Review | Hughes, T., 2010. A simple holistic theory of glacier sliding, submitted to <i>Journal of Geophysical Research</i> | Basic | 0 | 2 |
| Hughes, Terence | Journal Article | In Review | Hughes, T., 2010. A simple holistic hypothesis for the self-destruction of ice sheets, submitted to <i>Palaeogeography, Palaeoecology, Palaeoclimatology</i> . | Basic | 0 | 2 |



| | | | | | | | |
|-----------------|-----------------|-----------|--|-----|---------|---|---|
| Hughes, Terence | Journal Article | In Review | Hughes, T., 2010. When the shallow ice approximation fails for sheet flow, letter submitted to the Journal of Glaciology. | | Basic | 0 | 2 |
| Hughes, Terence | Journal Article | In Review | Hughes, T., Sargent, A., and Fastook, J., 2010. Ice-bed coupling beneath and beyond ice streams, Byrd Glacier, Antarctica. Submitted to Journal of Geophysical Research. | | Basic | 0 | 2 |
| Hughes, Terence | Journal Article | In Review | Pingree, K., Lurie, M., and Hughes, T., 2010. Is the East Antarctic Ice Sheet stable? Submitted to Quaternary Research. | | Basic | 0 | 2 |
| Hughes, Terence | Journal Article | In Review | Hofstede, C., and Hughes, T., 2010. A flowline model for the dynamics of Jakobshavn Isbrae and ice streams in general, in preparation. | | Basic | 0 | 2 |
| Jain, Shaleen | Journal Article | In Press | Kim, J.-S. and S. Jain, High resolution streamflow trend analysis applicable to annual decision calendars: A western United States case study. Climatic Change (in press). | Yes | Applied | 0 | 0 |
| Jain, Shaleen | Journal Article | Published | Kim, J.-S., S. Jain, and S. A. Norton (2010), Streamflow variability and hydroclimatic change at the Bear Brook Watershed in Maine (BBWM), USA, Environmental Monitoring and Assessment doi: 10.1007/s10661-010-1525-1. | Yes | Basic | 0 | 0 |
| Jain, Shaleen | Journal Article | Submitted | Sen Gupta, A., S. Jain, and J.-S. Kim, Past climate, future perspective: An exploratory analysis using climate proxies and drought risk assessment to inform water resources management and policy in Maine, USA, Journal of Environmental Management. | Yes | Applied | 1 | 0 |
| Kelley, Alice | Journal Article | Published | Sandweiss, D., Kelley A.R., Belknap, D., Kelley, J.T., Rademaker, K., and Reid, D., 2010, GPR Identification of an Early Monument at Los Morteros on the Peruvian Coastal Desert, Quaternary Research, 73: 439-448. http://www.sciencedirect.com/science?_ob=PublicationURL&_tockey=%23TOC%236995%232010%23999269996%231917739%23FLA%23&_cdi=6995&_pubType=J&_auth=y&_acct=C000050221&_version=1&_urlVersion=0&_userid=10&md5=38e03b1dd1b949a14a3912743135cb5f | Yes | | 1 | 1 |
| Kelley, Alice | Other | Published | Kelley, A.R. and Caron, L., 2010. Surficial Geologic Map of Bucksport ME 7.5' Quadrangle. Maine Geological Survey Open File Report 10-18. 1 sheet, 1:24,000 | | | 0 | 0 |
| Kelley, Joseph | Journal Article | Accepted | Kelley, J.T., Belknap, D.F., and Claesson, S., 2010, Drowned coastal deposits with associated archeological remains from a sea-level "slowstand": northwestern Gulf of Maine, USA. Geology (in press). | Yes | Basic | 0 | 0 |
| Kelley, Joseph | Book | Published | Kelley, J.T., Pilkey, O.H., and Cooper, J.A.G., eds., 2009, America's Most Vulnerable Shorelines. Geological Society of America Special Paper Number 460, 179 p. | Yes | Applied | 0 | 0 |
| Kelley, Joseph | Book | Accepted | Pilkey, O.P., Kelley, J.T., Neal, W., Cooper, J.A.G., 2010, The Worlds Beaches, University of California Press, in press. | | Applied | 0 | 0 |
| Kelley, Joseph | Journal Article | Published | Brothers, L., Kelley, J.T., Landon, M., Belknap, D.F., and Dickson, S.M., 2010, Development in the Gulf of Maine: understanding the history (and the hazards) before we build. Maine Policy Review, v. 19, p. 46-57. | Yes | Applied | 1 | 0 |
| Kelley, Joseph | Journal Article | Accepted | Wilson, K.R., Kelley, J.T., Tanner, B.R., and Belknap, D.F., 2010, Examining north-temperate salt marsh geologic records: determining origin of and defining a unique stratigraphic signature for salt pools of six Maine salt marshes, USA. Journal of Coastal Research, In press. | | Basic | 1 | 0 |
| Kelley, Joseph | Journal Article | Published | Tanner, B., Uhle, M., Mora, C., Kelley, J.T., Schuneman, P., Lane, C.S., and Allen, E.S., Comparison of bulk and compound-specific ¹³ C analyses and determination of carbon sources to salt marsh sediments using n-alkane distributions, (Maine, USA), Estuarine, Coastal and Shelf Science, v. 86, p. 283-291, doi:10.1016/j.ecss.2009.11.023 | | Basic | 1 | 0 |
| Kelley, Joseph | Journal Article | Published | Sandweiss, D.H., Kelley, A.R., Belknap, D.F., Kelley, J.T., Rademaker, K., and Reid, D.A., 2010. GPR identification | | Basic | 1 | 1 |



| | | | | | | | | | |
|------------------|-----------------|-----------|--|-----|---------|---|---|--|--|
| | | | of an early monument at Los Morteros in the Peruvian coastal desert. <i>Quaternary Research</i> , v. 73, p. 439-448. | | | | | | |
| Kelley, Joseph | Book Chapter | Published | Kelley, J.T., and Brothers, L., 2009, Camp Ellis, ME: a small beach-front community with a big problem/jetty. In Kelley, J.T., Pilkey, O.H., and Cooper, J.A.G., eds., 2009, <i>America's Most Vulnerable Shorelines</i> . Geological Society of America Special Paper 460, p. 1-20. | Yes | Applied | 1 | 0 | | |
| Koons, Peter | Journal Article | Accepted | Naus-Thijssen, F.M.J., Johnson, S.E. and Koons, P.O., in review. Modeling crenulation cleavage: a polymineralic approach, <i>Journal of Structural Geology</i> , 32, 330-341, doi: 10.1016/j.jsg.2010.01.004. | Yes | | 1 | 0 | | |
| Koons, Peter | Journal Article | Published | Johnson, S.E., Lenferink, H.J., Price, N.A., Marsh, J.H., Koons, P.O. West, D.P., Jr., and Beane, R., 2009. Clast-based kinematic vorticity gauges: the effects of slip at matrix/clast interfaces. <i>Journal of Structural Geology</i> , 31, 1322-1339; doi:10.1016/j.jsg.2009.07.008. | Yes | | 2 | 1 | | |
| Koons, Peter | Journal Article | Accepted | Koons, P.O. Hooks, B., Barker, A.D. Upton, P.O., Pavlis, T., 2010; Three-dimensional deformation of the southeastern Alaskan Plate Boundary; <i>TECTONICS</i> doi:10.1029/2009TC002463, in press | Yes | | 1 | 0 | | |
| Koons, Peter | Journal Article | Published | Johnson, S.E., Lenferink, H.J., Marsh, J.H., Price, N.A., Koons, P.O. and West, D.P., Jr., 2009. Kinematic vorticity analysis and evolving strength of mylonitic shear zones: new data and numerical results. <i>Geology</i> , 37, 1075-1078; doi: 10.1130/G30227A.1. | Yes | | 1 | 1 | | |
| Koons, Peter | Journal Article | Published | Koons, P.O., 2009, On the implications of low spatial correlation of tectonic and climate variables in the western European Alps, <i>GEOLOGY</i> , 37, 863-864 | Yes | | 0 | 0 | | |
| Koons, Peter | Journal Article | Accepted | Johnson, S.E., Jin, Z.-H., Naus-Thijssen, F.M.J. and Koons, P.O., 2010. Coupled deformation and metamorphism in the roof of a tabular mid-crustal igneous complex. <i>Bulletin of the Geological Society of America</i> , in press. | Yes | | 0 | 1 | | |
| Koons, Peter | Journal Article | Submitted | Koons, P.O., P. Upton, A.D. Barker, 2010, The influence of mechanical properties on the link between tectonic and topographic evolution. <i>GEOMORPHOLOGY</i> , 120, submitted 2010. | Yes | | 1 | 0 | | |
| Kreutz, Karl | Journal Article | Accepted | Kelsey, E., C. Wake, K.J. Kreutz, and E. Osterberg (2010), Ice layers as an indicator of summer warmth and atmospheric blocking in Alaska, <i>Journal of Glaciology</i> , accepted. | Yes | Basic | 1 | 0 | | |
| Kreutz, Karl | Journal Article | Accepted | Wanamaker, A., K.J. Kreutz, B. Schöne, and D. Introne (2010), Gulf of Maine shells reveal changes in seawater temperature seasonality during the Medieval Climate Anomaly and the Little Ice Age, <i>Paleogeography, Paleoclimatology, Paleoecology</i> , accepted. | Yes | Basic | 0 | 0 | | |
| Kreutz, Karl | Journal Article | Accepted | Schöne, B., A. Wanamaker, J. Fiebig, J. Thebault, and K.J. Kreutz, (2010), Annually resolved $\delta^{13}C$ chronologies of long-lived bivalve mollusks (<i>Arctica Islandica</i>) reveal oceanic carbon dynamics in the temperate North Atlantic during recent centuries, <i>Paleogeography, Paleoclimatology, Paleoecology</i> , doi: 10.1016/j.paleo.2010.02.002. | Yes | Basic | 0 | 0 | | |
| Kurbatov, Andrei | Journal Article | Published | M.I. Bursik, S.E. Kobs, A. Burns, O.A. Braitseva, L.I. Bazanova, I.V. Melekestsev, A. Kurbatov, D.C. Pieri (2009), Volcanic plumes and wind: Jetstream interaction examples and implications for air traffic. <i>J. Volc. Geoth. Res.</i> vol. 186 pp. 60-67 | | Basic | 0 | 0 | | |
| Kurbatov, Andrei | Journal Article | Submitted | B. Grigholm, P.A. Mayewski, A.V. Kurbatov, G. Casassa, A. Contreras Staeding, M. Handley, S.B. Sneed, D.S. Introne (2009), Chemical composition of fresh snow from Glaciar Marinelli, Tierra del Fuego, Chile, <i>J. of Glaciology</i> , 55(193), 769-776. | | Applied | 1 | 0 | | |
| Kurbatov, Andrei | Journal Article | Submitted | A.V. Kurbatov, P.A. Mayewski, J.P. Steffensen, A. West, D.J. Kennett, J.P. Kennett, T.E. Bunch, M. Handley, D.S. Introne, S.S. Que Hee, C. Mercer, M. Sellers, F. Shen, S.B. Sneed, J.C. Weaver, J.H. Wittke, B. Culleton, T.W. Stafford, J. J. Donovan, S. Xie, J. J. Razink Jr., A. Stich, W.S. Wolbach. (2010 in review). <i>Discovery of</i> | Yes | Applied | 0 | 0 | | |



| | | | | | | | | | |
|------------------|-----------------|-----------|---|-----|-------|--|--|--|-----|
| | | | Nanodiamond-rich Layer in Polar (Greenland) Ice Sheet, <i>Journal of Glaciology</i> . | | | | | | |
| Kurbatov, Andrei | Journal Article | Submitted | Elena V. Korotkikh, Paul A. Mayewski, Michael J. Handley, Sharon B. Sneed, Douglas S. Introne, Andrei V. Kurbatov, Nelia W. Dunbar and William C. McIntosh, (in prep.), The Last Interglacial in West Antarctica. | | | | | | 1 0 |
| Kurbatov, Andrei | Book Chapter | Submitted | S. Kraus and A. Kurbatov, (in press), Chemical fingerprint of bulk tephra from Late Pleistocene / Holocene volcanoes in the northern Antarctic Peninsula area. In: <i>Antarctica: Global, Environmental and Economic Issues</i> , edited by Thomas J. Mulder, Nova Science Publishers, ISBN: 978-1-60876-014-5 | Yes | Basic | | | | 0 0 |
| Maasch, Kirk | Journal Article | Submitted | Dixon, D., P. Mayewski, I. Goodwin, G. Marshall, R. Freeman, K. Maasch and S. Sneed. An Ice Core Proxy for Northerly Air Mass Incursions (NAMI) into West Antarctica, <i>International Journal of Climatology</i> | | | | | | 2 0 |
| Maasch, Kirk | Abstract | Published | Maasch, K.A., R.J. Oglesby, C. M. Rowe, D. J. Erickson, and C. Hays, 2009. How Important is Spatial Resolution: Case Studies at 48, 12, and 4 km for the U.S., Latin America, and Southern Asia, <i>Eos Trans. AGU</i> , 89(53), Fall Meet. Suppl., Abstract A33A-0218. | | | | | | 0 0 |
| Maasch, Kirk | Abstract | Published | Oglesby, R.J., C.M. Rowe, K.A. Maasch, D.J. Erickson, and C. Hays, 2009. Evaluating Climate Models: Should We Use Weather or Climate Observations?, <i>Eos Trans. AGU</i> , 89(53), Fall Meet. Suppl., Abstract GC41A-0754. | | | | | | 0 0 |
| Mayewski, Paul | Book | Submitted | Mayewski, P.A. and Morrison, M.C., near press, <i>The Journey: Exploration, Research and the Unmasking of Human Innocence</i> , A Dauntless Press, Santa Fe, NM. | | | | | | 0 0 |
| Mayewski, Paul | Journal Article | Published | Weninger, B., Clare, L., Rohling, E., Bar-Yosef, O., Böhner, U., Budja, M., Bundschuh, M., Feurdan, A., Gebel, H., Hilpert, J., Joris, O., Linstader, J., Mayewski, P., Muhlenbruch, T., Reingruber, A., Rollefson, G., Schyle, D., Thissen, L., Todorova, H., and Zielhofer, C., 2009, The impact of rapid climate change on prehistoric societies during the Holocene in the eastern Mediterranean, <i>Documenta Praehistorica XXXVI</i> , UDK 902(4-5)"631".551.583, 7-59. | Yes | | | | | 0 0 |
| Mayewski, Paul | Journal Article | Submitted | Kennett, J.P., West, A., Mayewski, P.A., Bunch, T.E., Stafford, T.W., Ballard, J. and Wolbach, in review, Evidence for widespread biomass-burning at the Younger Dryas boundary (YDB) at 12.9ka, <i>PNAS</i> . | Yes | | | | | 0 0 |
| Mayewski, Paul | Journal Article | Published | Xu, J., Hou, S., Qin, D., Kaspari, S., Mayewski, P.A., Petit, J.R., Delmonte, B., Kang, S., Ren, J., Chappellaz, Hong, S., 2009, An 108.83 m ice core record of atmospheric dust deposition at Mt. Qomolangma (Everest), central Himalayas, <i>Quaternary Research</i> 73, 33-38. | Yes | | | | | 0 0 |
| Mayewski, Paul | Journal Article | Submitted | Mahowald, N., Kloster, S., Engelstaedter, S., Moore, J.K., Mukhopadhyay, S., McConnell, J., A;bani, S., Doney, S., Bhattacharya, A., Curran, M., Flanner, M., Hoffman, Lawrence, F., Lindsay, K., Mayewski, P.A., Neff, J., Rothenberg, D., Thomas, E., Thornton, P., and Zender, C., in review, Observed 20th century desert dust changes: implications for climate and biogeochemistry, <i>Atmospheric Chemistry and Physics</i> . | Yes | | | | | 0 0 |
| Mayewski, Paul | Journal Article | Submitted | Sneed, S.B., Mayewski, P.A., and Dixon, D., in review, Multi-ice core sodium, nss-sulfate, and methylsulfonate correlations with Antarctic sea ice extent - an enhanced ice core sea ice extent proxy. | Yes | | | | | 2 0 |
| Mayewski, Paul | Journal Article | Submitted | Korotkikh, E., Mayewski, P. A., Handley, M., Introne, D., Sneed, S., Kurbatov, A., Dunbar, N. and McIntosh, W., in review, The last interglacial in West Antarctica | Yes | | | | | 2 0 |
| Mayewski, Paul | Journal Article | Submitted | Kang, S., Zhang, Y., Zhang, Y., Grigholm, B., Kaspari, S, Qin, D., Ren, J. and Mayewski, P.A., in review, Variability of atmospheric dust loading over the central Tibetan Plateau based on ice core glaciochemistry, <i>Atmospheric Environment</i> . | Yes | | | | | 2 0 |
| Mayewski, Paul | Journal Article | Submitted | Purdie, H., Mackintosh, A., Lawson, W., Anderson, B., Morgenstern, U., Chinn, T., and Mayewski, P.A., in review, Interannual variability in net accumulation on Tasman Glacier and its relationship with climate. | Yes | | | | | 1 0 |

| | | | | | | | |
|--------------------------|-----------------|-----------|--|-----|-------|---|---|
| Mayewski, Paul | Proceedings | Accepted | Mayewski, P.A., in press, State of the Antarctic Climate System, in Climate Change in the Magellan and Antarctic Regions: Evidence and Challenges for the Future. | | | 0 | 0 |
| Mayewski, Paul | Proceedings | Accepted | Mayewski, P.A., in press, Ice core reconstruction of Antarctic climate change and implications, in Climate Change in the Magellan and Antarctic Regions: Evidence and Challenges for the Future. | | | 0 | 0 |
| Meese, Debra | Journal Article | Published | Spaulding, NE, D.A. Meese, I. Baker, P. A. Mayewski, G. S. Hamilton, submitted, A new technique for firn grain size measurements, Journal of Glaciology. | Yes | | 1 | 0 |
| Norton, Stephen | Journal Article | Accepted | Wilson, T. A., Amirbahman, A., Norton, S. A., and Voytek, M. A., 2010, Sedimentary phosphorus dynamics in oligotrophic lakes: J. Paleolimn., in press. | Yes | | 1 | 0 |
| Norton, Stephen | Journal Article | Published | Porcal P., Amirbahman A., Kopáček J., Novák F., Norton S.A., 2009, Photochemical release of humic and fulvic acid-bound metals from simulated soil and streamwater. J. Environ. Mon., 10. | Yes | | 0 | 0 |
| Norton, Stephen | Journal Article | Published | Kopáček, J., Hejzlar, J., Kana, J., Norton, S. A., Porcal, P., Turek, J., 2009, Trends in aluminium export from a glaciated mountain area to surface waters: Effects of soil development, atmospheric acidification, and nitrogen-saturation: J. Inorg. Biochemistry, 103, 1439-1448. | Yes | | 0 | 0 |
| Norton, Stephen | Journal Article | Published | Navrátil, T., Rohovec, J., Amirbahman, A., Norton, S. A., and Fernandez, I. J., 2009, Controls of natural amorphous aluminum hydroxide on sulfate and phosphate anions in sediment-solution systems: Water, Air, and Soil Poll., 201, 87-98. | Yes | | 0 | 0 |
| Norton, Stephen | Journal Article | Published | SanClements, M. D., Fernandez, I. J., and Norton, S. A., 2009, Soil and sediment phosphorus fractions in a forested watershed at Acadia National Park, ME, USA. For. Ecol. Manag., 258, 2318-2325. | Yes | | 0 | 0 |
| Norton, Stephen | Journal Article | Published | Banaitis, M. R., Fernandez, I. J., Wilson, C., Norton, S. A., and Dail, D. B., 2009 Biogeochemical response of a northeastern forest ecosystem to biosolids amendments: Tech. Rept. Waste Management, J. Environ. Qual., 38, 792-803. | Yes | | 2 | 0 |
| Ocampo-Raeder, Constanza | Journal Article | Published | 2009 Tierras Ociosas o Productivas? El Impacto y el Significado Cultural de la Agricultura Indígena de la Amazonia Peruana. Debate Agrario 44: 101-127. | Yes | | 0 | 0 |
| Ocampo-Raeder, Constanza | Journal Article | Accepted | 2010 Review of Against the Grain: The Vayda Tradition in Human Ecology and Ecological Anthropology. Human Ecology. | Yes | | 0 | 0 |
| Ocampo-Raeder, Constanza | Editorial | Published | “Ni Capitalismo, Ni Comunismo: El Premio Nobel de Economía y la Realidad Económica del Perú Profundo. La Revista Agraria 10 (112): 16. | | | 0 | 0 |
| Olsen, Brian | Journal Article | Published | Olsen, B.J., R. Greenberg, I.A. Liu, J.M. Felch, J.R. Walters. Published Online. Interactions between sexual and natural selection on the evolution of a plumage badge. Evolutionary Ecology. DOI: 10.1007/s10682-009-9330-4 | Yes | Basic | 0 | 2 |
| Olsen, Brian | Journal Article | Published | Greenberg, R, B.J. Olsen, M.A. Etterson. 2010. Patterns of seasonal abundance and social segregation in inland and Coastal Plain Swamp Sparrow in a Delaware tidal marsh. Condor 112(1):159-167. | Yes | Basic | 0 | 0 |
| Olsen, Brian | Journal Article | Published | Greenberg, R. and B.J. Olsen. Published Online. Divergence, sexual dimorphism, and sex-specific increase in variation of bill size in tidal marsh sparrows: Island-like processes in a continental habitat. Ecology. DOI: 10.1890/09-1136 | Yes | Basic | 0 | 0 |
| Olsen, Brian | Journal Article | Accepted | Etterson, M.A., S.N. Ellis-Felege, D. Evers, G. Gauthier, J. A. Grzybowski, B.J. Mattsson, L.R. Nagy, B.J.Olsen, C.M. Pease, M. Post van der Burg, and A. Potvien. Invited Manuscript in Revision. Modeling fecundity in birds: Basic considerations, current developments, and future directions. Ecological Modelling. | Yes | Basic | 0 | 0 |

| | | | | | | | |
|--------------------|------------------|-----------|---|-----|---------|---|---|
| Olsen, Brian | Book Chapter | Accepted | Etterson, M.A., B.J. Olsen, R. Greenberg, and W.G. Shriver. In Press. Sources, sinks, and model accuracy in Sources, Sinks, and Sustainability Across Landscapes (J. Liu, V. Hull, A. Morzillo, and John Wiens, eds.). Cambridge University Press, New York. | Yes | Basic | 0 | 0 |
| Olsen, Brian | Abstract | Accepted | Olsen, B.J. 2010. Abiotic drivers of sexual selection in the tidal marsh: A case study using swamp sparrows. The 25th International Ornithological Congress. Campos do Jordão, SP, Brazil | | Basic | 0 | 0 |
| Peterson, Michael | Journal Article | Published | Pries, Malte, Holger Militz, Barry Goodell, Xinfeng Xie, Yuhui Qian, Michael Peterson, Roberto Lopez-Anido, A Note on Reinforcement of Polymer Matrix Composites Using Carbon Residues Derived From Woody Biomass, Journal of Composite Materials Online, First, published on February 25, 2010 as doi:10.1177/0021998309360935 | Yes | Applied | 1 | 0 |
| Peterson, Michael | Journal Article | Published | M.L. Peterson, Raoul F. Reiser, II, Pei-Hsin Kuo, Donald W. Radford, C. Wayne McIlwraith, The effect of temperature on 6 furlong times on a synthetic racing surface, Equine vet. J. 42, 2010 351-357. | Yes | Basic | 1 | 0 |
| Peterson, Michael | Journal Article | Published | J.W. Bridge, M.L. Peterson, D.W. Radford, C.W. McIlwraith, Thermal transitions in high oil content petroleum-based wax blends used in granular sport surfaces, Thermochimica Acta (2008), doi:10.1016/j.tca.2009.10.009, 2010, vol. 498, No. 1-2, pp. 106-111 | Yes | Applied | 1 | 0 |
| Peterson, Michael | Proceedings | Published | "Dynamic Strain Rate Response with Changing Temperatures for Wax-Coated Granular Composites", Bridge, J., Peterson, M, McIlwraith, SEM Annual Conf, Indianapolis, IN, June 7-10, 2010 | | Applied | 1 | 0 |
| Peterson, Michael | Proceedings | Published | Michael "Mick" Peterson, Ph.D., Jeffrey J. Thomason, Ph.D., Becky Woodward, Ph.D., Wayne McIlwraith, BVSc. Ph.D., "Engineering tools to support the development of safer racing surfaces, Proceedings of the International Conference of Racing Analysts and Veterinarians, Queenstown, New Zealand, 7th -13th March 2010 | Yes | Applied | 0 | 0 |
| Peterson, Michael | Proceedings | Published | "Characterizing the Mechanical Properties of Wax-Coated Granular Composites", Bridge, J., Peterson, M, McIlwraith, C, Beaumont, R., TMS 2010 Conf, Seattle, WA, Feb 14-18, 2009 | | Applied | 1 | 0 |
| Robinson, Brian S. | Journal Article | Published | Robinson, Brian S., Jennifer C. Ort, William E. Eldridge, Adrian L. Burke and Bertrand G. Pelletier 2009 Paleoindian Aggregation and Social Context at Bull Brook. American Antiquity 74(3):423- 447. | Yes | | 2 | 0 |
| Robinson, Brian S. | Journal Article | Published | Robinson, Brian, George Jacobson Jr., Martin Yates, Arthur Spiess and Ellen Cowie 2009 Atlantic Salmon, Archaeology and Climate Change in New England. Journal of Archaeological Science 36:2184-2191. | Yes | | 0 | 0 |
| Robinson, Brian S. | Technical Report | Accepted | Robinson, Brian S. 2009 Archaeology of the Birch Point Petroglyph Site: Phase I Survey. For Comprehensive Land-Use Planning for Passamaquoddy Bay Petroglyph Sites, directed by Donald Soctomah, Passamaquoddy Tribal Historic Preservation Office. 36 pages. | | | 0 | 0 |
| Robinson, Brian S. | Technical Report | Accepted | Robinson, Brian S. 2009 A Gathering Place above the Falls: The Archaeology of Indian Island and the Old Town Water Main. Submitted to Penobscot Tribal Historic Preservation Office, and Maine Historic Preservation Comm. 146 pages. | | | 0 | 0 |
| Robinson, Brian S. | Technical Report | Accepted | Robinson, Brian and Lisa Neuman 2009 Three-Year Progress Report for An Archaeological Coastal Research Program at the University of Maine. Submitted to the Office of the Provost, University of Maine. 22 pages. | | | 0 | 0 |
| Roscoe, Paul B. | Journal Article | Published | (with Ulrike Claas) A Journey up the Sepik River in 1887. Journal of Pacific History 44:333-343. | Yes | Basic | 0 | 0 |
| Roscoe, Paul B. | Journal Article | Published | On the 'Pacification' of the European Neolithic: Ethnographic Analogy and the Neglect of History. World Archaeology 41:578-588. | Yes | Basic | 0 | 0 |
| Roscoe, Paul B. | Journal Article | Published | Social Signaling and the Organization of Small-scale Society: The Case of Contact-era New Guinea. Journal of Archaeological Method and Theory 16:69-116. | Yes | Basic | 0 | 0 |



| | | | | | | | |
|-----------------|-----------------|-----------|--|-----|-------|---|---|
| Roscoe, Paul B. | Journal Article | Submitted | Dead Birds: The ‘Theater’ of War Among the Dugum Dani. Revised and resubmitted to American Anthropologist. | Yes | Basic | 0 | 0 |
| Roscoe, Paul B. | Journal Article | Accepted | On the Hypothesis of War in the Levantine Early Neolithic. To appear in Neo-Lithics (Special Issue. Conflict and Warfare in the Near Eastern Neolithic. | Yes | Basic | 0 | 0 |
| Roscoe, Paul B. | Book Chapter | Accepted | The Economics of the Polynesian Outliers. Accepted for inclusion in: The Polynesian Outliers, Richard Feinberg and Richard Scaglione, eds. | Yes | Basic | 0 | 0 |
| Roscoe, Paul B. | Book Chapter | Accepted | (with David Lipset). Introduction: Donal F. Tuzin, An Anthropologist’s Anthropologist. Accepted for inclusion in Echoes of the Tambaran: Masculinity, History and the Subject in the Work of Donald F. Tuzin. David Lipset and Paul Roscoe, eds. Under review by ANU e-Press. | Yes | Basic | 0 | 0 |
| Roscoe, Paul B. | Book Chapter | Accepted | The Abelam ‘Invasion’ and the Rise of Ilahita Revisited. Accepted for inclusion in Echoes of the Tambaran: Masculinity, History and the Subject in the Work of Donald F. Tuzin. David Lipset and Paul Roscoe, eds. Under review by ANU e-Press. | Yes | Basic | 0 | 0 |
| Roscoe, Paul B. | Book Chapter | Accepted | The Political Capacities of Big Man. Accepted for inclusion in Beyond Elites, edited by Tobias Keinlin. To be published in the series Universitaetsforschungen zur Praehistorischen Archaeologie, Bochum: R. Habelt. | Yes | Basic | 0 | 0 |
| Roscoe, Paul B. | Other | Accepted | Encyclopedia entry, Participant Observation. Vocabulary for the Study of Religion, edited by Robert Siegel. | | Basic | 0 | 0 |
| Sandweiss, Dan | Book | Published | Barnes, M. and D.H. Sandweiss, editors, 2009. Andean Past 9. Ithaca, NY: Cornell University Latin American Studies Program. | Yes | Basic | 0 | 0 |
| Sandweiss, Dan | Journal Article | Published | Sandweiss, D.H., A.R. Kelley, D.F. Belknap, J.T. Kelley, K. Rademaker, and D.A. Reid, 2010. GPR Identification of an Early Monument at Los Morteros on the Peruvian Coastal Desert. Quaternary Research 73:439-448. http://www.sciencedirect.com/science?_ob=ArticleURL&_udi=B6WPN-4YTM6CF-1&_user=10&_coverDate=05%2F31%2F2010&_rdoc=4&_fmt=high&_orig=browse&_srch=doc-info(%23toc%236995%232010%23999269996%231917739%23FLA%23display%23Volume)&_cdi=6995&_sort=d&_docanchor=&_c | Yes | Basic | 1 | 1 |
| Sandweiss, Dan | Journal Article | Accepted | Jones, K.B., G.W.L. Hodgins, M.F. Etayo-Cadavid, C.F.T. Andrus, and D.H. Sandweiss. In press. Centuries of marine radiocarbon reservoir age variation within archaeological Mesodesma donacium shells from southern Peru. Radiocarbon. | Yes | Basic | 0 | 0 |
| Sandweiss, Dan | Book Chapter | Published | Sandweiss, D.H., 2009. Early Fishing and Inland Monuments: Challenging the Maritime Foundations of Andean Civilization? In Foundations of Andean Civilization: Papers in Honor of Michael E. Moseley, ed. by J. Marcus, C. Stanish, and R. Williams, pp. 39-54. Los Angeles: Cotsen Institute of Archaeology. | Yes | Basic | 0 | 0 |
| Sandweiss, Dan | Book Chapter | Published | Richardson, J.B. III and D.H. Sandweiss, 2008. Climate Change, El Niño and the Rise of Complex Society on the Peruvian Coast during the Middle Holocene. In El Niño, Catastrophism, and Culture Change in Ancient America, ed. By DH. Sandweiss and J. Quilter, pp. 59-75. Washington DC: Dumbarton Oaks. | Yes | Basic | 0 | 0 |
| Sandweiss, Dan | Book Chapter | Accepted | Sandweiss, D.H. In press. Los fechados radiocarbónicos como «artefactos diagnósticos» en los primeros sitios marítimos peruanos. Carbono-14 y la Arqueología Peruana (working title), ed. by V. Falcón. Lima Peru: Museo Nacional de Arqueología, Antropología, e Historia. | | Basic | 0 | 0 |
| Sandweiss, Dan | Other | Published | Sandweiss, D.H., 2010. Guinea Pigs. In Encyclopedia of Latin America. Vol 1. "Amerindians through Foreign Colonization." (Washington: Facts on File), ed. by Michael J. Francis. | | Basic | 0 | 0 |
| Saros, Jasmine | Journal Article | Published | Salm. C.R., J.F. Saros, S.C. Fritz, C.L. Osburn & D.M. Reineke. Phytonlankton productivity across prairie saline | Yes | Basic | 1 | 0 |



| | | | | | | | | | |
|------------------|-----------------|-----------|--|-----|---------|---|---|--|--|
| | | | lakes of the Great Plains (USA): A step toward deciphering patterns through lake classification models. Canadian Journal of Fisheries & Aquatic Sciences 66: 1435-1448. | | | | | | |
| Saros, Jasmine | Journal Article | Published | Williamson, C.E., C.R. Salm, S.L. Cooke & J.E. Saros. How do UV, temperature, and zooplankton influence the dynamics of alpine phytoplankton communities? Hydrobiologia, DOI 10.1007/s10750-010-0147-5 | Yes | Basic | 2 | 0 | | |
| Saros, Jasmine | Journal Article | Published | Winn, N., C.E. Williamson, R. Abbitt, K. Rose, W. Renwick, M. Henry & J.E. Saros. Modeling dissolved organic carbon (DOC) in subalpine and alpine lakes with GIS and remote sensing. Landscape Ecology 24: 807-816. | Yes | Basic | 1 | 0 | | |
| Saros, Jasmine | Journal Article | Published | Rose, K.C., Williamson, C.E., Saros, J.E., Sommaruga, R. & J.M. Fischer. 2009. Differences in UV transparency and thermal structure between alpine and subalpine lakes: implications for organisms. Photochemical and Photobiological Sciences 8: 1244-1256. | Yes | Basic | 0 | 0 | | |
| Saros, Jasmine | Journal Article | Published | Hobbs, W.O., Telford, R.J., Birks, H.J.B., Saros, J.E., Hazewinkel, R.R.O., Perren, B.B., Saulnier-Talbot, E. & A.P. Wolfe. Quantifying recent ecological changes in remote lakes of North America and Greenland using sediment diatom assemblages. PLoS One 5(4): e10026. doi:10.1371/journal.pone.0010026. | Yes | Basic | 0 | 0 | | |
| Saros, Jasmine | Journal Article | Published | Williamson, C.E., Saros, J.E., Vincent, W.F. & J.P. Smol. 2009. Lakes and reservoirs as sentinels, integrators, and regulators of climate change. Limnology & Oceanography 54: 2273-2282. | Yes | Basic | 0 | 0 | | |
| Sobolik, Kristin | Book | Published | Paleonutrition. University of Arizona Press. | Yes | | 0 | 0 | | |
| Sobolik, Kristin | Journal Article | Published | High Dietary Intake of Prebiotic Inulin-type Fructans from Chihuahuan Desert. British Journal of Nutrition. Published online by Cambridge University Press 26 April, 2010. | Yes | | 0 | 0 | | |
| Sorg, Marcella | Book | Accepted | Sorg, Marcella H. and William D. Haglund (In prep.) Forensic Taphonomy: Evidence-Based Solutions | | Applied | 0 | 0 | | |
| Sorg, Marcella | Journal Article | Published | Brogdon, B.G., Marcella H. Sorg and Kerriann Marden Fingering a Murderer: A Successful Anthropological and Radiological Collaboration. Journal of Forensic Sciences 55(1):48-50 | Yes | Applied | 0 | 0 | | |
| Sorg, Marcella | Book Chapter | Published | Sorg, Marcella H. and William D. Haglund Forensic Anthropology. In Stuart H. James and Jon J. Nordby (editors) Principles of Forensic Science, 3rd Edition. CRC Press, Boca Raton, FL. Chapter 7: 99-118 | Yes | Applied | 0 | 0 | | |
| Sorg, Marcella | Book Chapter | Published | Sorg, Marcella H. (2008) Maine Patterns and Trends in Drug Abuse: June 2008. In Epidemiologic Trends in Drug Abuse: Proceedings of the Community Epidemiology Work Group, Volume II, June, 2008, pp. 151-159. National Institute on Drug Abuse. Washington, DC. http://www.drugabuse.gov/PDF/CEWG/CEWGVol2June08WebFINAL.pdf | Yes | Applied | 0 | 0 | | |
| Sorg, Marcella | Proceedings | Published | Brogdon, B.G., Marcella H. Sorg, and Kerriann Marden (2009) Fingering a Murderer: A Successful Anthropological and Radiological Collaboration. Proceedings of the Annual Meeting of the American Academy of Forensic Sciences. | Yes | Applied | 1 | 0 | | |
| Sorg, Marcella | Proceedings | Published | Sorg, Marcella H. and J. Gerry Mugford (2008) National and International Epidemiology of Prescription Drug Mortalities, with a Focus on Benzodiazepines. Proceedings of the International Symposium on Pharmaceuticals in the Home and Environment: Catalysts for Change and Sixth Annual Maine Benzodiazepine Study Group Conference. | Yes | Applied | 0 | 0 | | |
| Sorg, Marcella | Proceedings | Published | J. Gerry Mugford, Marcella H. Sorg, James W. Berry, Terrance Callanan, Stevan Gressitt, and Shweta Pai (2008) Urban and Rural Multiple Site Survey of Physician Benzodiazepine Prescribing Patterns. Proceedings of the International Symposium on Pharmaceuticals in the Home and Environment: Catalysts for Change and Sixth Annual Maine Benzodiazepine Study Group Conference. | Yes | Applied | 1 | 0 | | |
| Sorg, Marcella | Proceedings | Published | Sorg, Marcella H. (2008) Maine Trends and Drug Abuse Patterns: June 2008. In Epidemiologic Trends in Drug Abuse: Proceedings of the Community Epidemiology Work Group. Volume I. June 2008. Highlights and Executive | Yes | Applied | 0 | 0 | | |



| | | Summary (abstract) | | | | | |
|--------------------|------------------|--------------------|---|-----|---------|---|---|
| Sorg, Marcella | Proceedings | Published | Sorg, Marcella H. and Leonard J. Paulozzi (2008) Pharmaceutical and illicit drug mortality in the United States: Trends and research issues. Program of the 136th Annual Meeting of the American Public Health Association. http://apha.confex.com/apha/136am/webprogram/Session25078.html | Yes | Applied | 0 | 0 |
| Vandergoes, Marcus | Journal Article | Published | Zink, K.-G., M.J. Vandergoes, K. Mangelsdorf, A.C. Dieffenbacher-Krall, and L. Schwark. Accepted. Application of bacterial glycerol dialkyl glycerol tetraethers (GDGTs) to develop modern and past temperature estimates from New Zealand lakes. <i>Organic Geochemistry</i> , IMOG 2009 Special Issue. | Yes | | 0 | 0 |
| Vandergoes, Marcus | Journal Article | Published | Putnam, A.E.; Schaefer, J.M.; Barrell, D.J.A.; Vandergoes, M.J.; Denton, G.H.; Kaplan, M.R.; Finkel, R.C.; Schwartz, R.; Goehring, B.M.; Kelley, S.E. 2010 In situ cosmogenic ¹⁰ Be production-rate calibration from the Southern Alps, New Zealand. <i>Quaternary geochronology</i> , Online first: doi:10.1016/j.quageo.2009.12.001 | Yes | | 0 | 0 |
| Vandergoes, Marcus | Journal Article | Submitted | Rewi Newnham, Marcus Vandergoes, Elisabeth Sikes, Lionel Carter, Janet Wilmshurst, David Lowe, Matt McGlone, Anna Sandiford Does the bipolar seesaw extend to the terrestrial southern mid-latitudes? (<i>Quaternary International</i>) | Yes | | 0 | 0 |
| Vandergoes, Marcus | Abstract | Published | Zink, K.J., Vandergoes, M., Mangelsdorf, K., Schwark, L., Dieffenbacher-Krall, A.; 2009: Application of Bacterial and Archeal GDGT's to develop paleo-temperature estimates from New Zealand Lakes. 24th International Meeting on Organic Geochemistry, September 6-11, Bremen, Germany | | | 0 | 0 |
| Vandergoes, Marcus | Abstract | Published | Vandergoes, M. R. Newnham, A. Dieffenbacher-Krall, G. Denton, and J. Wilmshurst. 2010. Palaeoenvironmental changes since the Last Glacial Maximum in Southern New Zealand. VI Southern Connections Congress, Bariloche, Argentina. | | | 0 | 0 |
| Vandergoes, Marcus | Abstract | Published | Massaferro, J., A. Dieffenbacher-Krall, S. Brooks, M. Vandergoes. 2010. A chironomid temperature inference model to interpret patterns of climate changes in southern South America. VI Southern Connections Congress, Bariloche, Argentina. | | | 0 | 0 |
| Vandergoes, Marcus | Proceedings | Published | Cortese, G., Vandergoes, M., Bostock, H., 2009: Past Climates Meeting, 2009, 15-17th May 2009 Te Papa, Wellington, New Zealand, GNS Science Miscellaneous Series 23, 65p. | | | 0 | 0 |
| Zaro, Gregory D. | Journal Article | Accepted | Zaro, Gregory, K.C. Nystrom, A. Umire-Alvarez, A. Bar, and A. Miranda (in press). Tierras olvidadas: Chiribaya landscape engineering and marginality in southern Peru. <i>Latin American Antiquity</i> , accepted for publication July 2009. | Yes | | 0 | 0 |
| Zaro, Gregory D. | Journal Article | Accepted | Houk, Brett A. and Gregory Zaro (in press). Evidence for ritual engineering in the Late/Terminal Classic site plan of La Milpa, Belize. <i>Latin American Antiquity</i> , accepted for publication October 2009. | Yes | | 0 | 0 |
| Zaro, Gregory D. | Journal Article | Submitted | Houk, Brett A. and Gregory Zaro (in review). Architectural history and ritual planning at La Milpa: reconsideration. <i>Research Reports in Belizean Archaeology</i> , submitted August 2009. | Yes | | 0 | 0 |
| Zaro, Gregory D. | Journal Article | Submitted | Zaro, Gregory and Brett A. Houk (in review). The rise and fall of the ancient Maya city of La Milpa, Belize: New data and new perspectives from the southern plazas. <i>Ancient Mesoamerica</i> , submitted December 2009. | Yes | | 0 | 0 |
| Zaro, Gregory D. | Technical Report | Published | Zaro, Gregory (2010). The 2009 Season of Excavations at Structure 24. In <i>The 2007–2009 Seasons of the La Milpa Core Project</i> , edited by Brett A. Houk, pp. 97–108. Occasional Papers in Archaeology, Number 3. Department of Sociology, Anthropology, and Social Work, Texas Tech University, Lubbock. | | | 0 | 0 |
| Zaro, Gregory D. | Technical Report | Published | Houk, Brett A., Débora Trein, and Gregory Zaro (2010). Overview of the 2008 Season of the La Milpa Core Project. In <i>The 2007–2009 Seasons of the La Milpa Core Project</i> , edited by Brett A. Houk, pp. 41–55. Occasional Papers in | | | 0 | 0 |



| | | | | | |
|------------------|------------------|-----------|--|---|---|
| | | | Archaeology, Number 3. Department of Sociology, Anthropology, and Social Work, Texas Tech University, Lubbock. | | |
| Zaro, Gregory D. | Technical Report | Published | Zaro, Gregory (2010). The 2008 Excavations at Structure 22. In The 2007–2009 Seasons of the La Milpa Core Project, edited by Brett A. Houk, pp. 57–66. Occasional Papers in Archaeology, Number 3. Department of Sociology, Anthropology, and Social Work, Texas Tech University, Lubbock. | 0 | 0 |
| Zaro, Gregory D. | Technical Report | Submitted | Zaro, Gregory and Daniel Ivan Dávila (2010). Informe Técnico del Proyecto Arqueológico Pampa Dispensilla 2010: Exploraciones e investigaciones arqueológicas en el sitio “Cola de Zorro,” Departamento de Arequipa, Perú. Informe final de la temporada de febrero a abril 2010. Technical report to be submitted to the Instituto Nacional de Cultura, Lima, Peru (May 2010). | 0 | 0 |

PRESENTATIONS: INTERNATIONAL/NATIONAL/REGIONAL/STATE/LOCAL

| Name | Date | Scope | Description | GS | US |
|--------------------|-------------|---------------|--|-----------|-----------|
| Belknap, Daniel F. | 10/18/09 | International | Geological preservation potential of coastal and submerged archaeological sites: Geological Society of America Abstracts with Programs, v. 41, no. 7, A23-1, p. 75. Annual Meeting, Portland, OR, October 18-21, 2009. http://www.geosociety.org/meetings/searchabstracts.htm | 0 | 0 |
| Belknap, Daniel F. | 03/15/10 | Regional | Belknap, D.F., Kelley, J.T., Cooper, J.A.G., Jackson, D.W.T., and McKenna, J., 2010, Comparison of glaciomarine seismic stratigraphy of the northwestern Irish coast with coastal Maine, USA: Geological Society of America Abstracts with Programs, v. 42, no. 1, A46-6, p. 127. NE-SE Joint Section Meeting, Baltimore, MD, March 13-17, 2010. http://www.geosociety.org/meetings/searchabstracts.htm | 0 | 0 |
| Belknap, Daniel F. | 03/22/10 | State | Belknap, D.F., 2010, The Critical leading edge of Gulf of Maine salt marshes: Maine Sea Grant Symposium 2010: Marine Science that Matters, Wells Conference Center, University of Maine, Orono. www.seagrant.umaine.edu | 0 | 0 |
| Belknap, Daniel F. | 05/07/10 | Local | Belknap, D.F., Kelley, J.T. and Wilson, K.R., 2010, Are Maine's marshes drowning - or could they soon? 17 th Annual Hal Borns Symposium, Climate Change Institute, University of Maine, May 7-8. http://www.climatechange.umaine.edu/ | 1 | 0 |
| Chai, Fei | 7/2009 | International | Modeling Carbon, Ecosystems, and Optical Properties in the Pacific Ocean. Ocean University of China, Qingdao, China. | 0 | 0 |
| Chai, Fei | 7/2009 | International | Modeling Marine Ecosystems and Carbon Cycle in the Pacific Ocean. Tongji University, Shanghai, China. | 0 | 0 |
| Chai, Fei | 10/2009 | International | Modeling Peru Upwelling Ecosystem Dynamics: from Physics to ANchovy. PICES Annual Meeting in Jeju Island, South Korea. | 0 | 0 |
| Chai, Fei | 11/2009 | National | Modeling Peru Upwelling Ecosystem Dynamics: from Physics to Anchovy. Old Dominion University. | 0 | 0 |
| Chai, Fei | 12/2009 | International | Incorporating optics to physical and ecosystem modeling. NATO Undersea Research Centre, La Spezia, Italy. | 0 | 0 |
| Chai, Fei | 12/2009 | National | Incorporating optics to physical and ecosystem modeling. Naval Research Lab, Stennis Space Center, MS | 0 | 0 |
| Chai, Fei | 2/2010 | National | Physical-biological-optics model development and simulation for the Pacific Ocean and Monterey Bay. ONR Optics Review Workshop in Portland, OR. | 0 | 0 |
| Chai, Fei | 2/2010 | National | Impact of climate change and melting glaciers on coastal ecosystems in the nearshore waters of the Gulf of Alaska. USGS National Downscaling Workshop. Raleigh, NC. | 0 | 0 |



| | | | | | |
|--------------------------|---------------|---------------|---|---|---|
| Chai, Fei | 5/2010 | National | Modeling Peru Upwelling Ecosystem Dynamics: from Physics to Anchovy. CAMEO E2E Modeling Workshop at Woods Hole, MA. | 0 | 0 |
| Chai, Fei | 6/2010 | International | Modeling Impacts of Mesoscale Eddies on Biogeochemical Processes in the South China Sea. International Symposium on Boundary Current Dynamics: its connection with open-ocean and coastal processes and responses to global climate change. Qingdao, China. | 0 | 0 |
| Chawathe, Sudarshan S. | October 2009 | International | Low-Latency Indoor Localization Using Bluetooth Beacons. A the 12th International IEEE Conference on Intelligent Transportation Systems (ITSC), St. Louis, Missouri, October 2009. | 0 | 0 |
| Chawathe, Sudarshan S. | May 2010 | International | Information Systems for Passenger Guidance in Transit Systems. METROSIMPOSIO 2010 SIMPOSIO DE TECNOLOGÍAS E INGENIERÍAS PARA EL METRO DE BOGOTÁ 7 y 8 de mayo de 2010 Bogotá, Colombia | 0 | 0 |
| Denton, George | 9/16/09 | International | The last glacial termination. Presented in Soldiers Grove, Wisconsin for the Comer Panel on Abrupt Climate Change | 1 | 0 |
| Denton, George | 9/17/10 | International | Alpine glacier fluctuations in the middle latitudes of the Southern Hemisphere. Given in Soldiers Grove, Wisconsin, at the annual meeting of the Comer Science and Education Foundation. | 1 | 0 |
| Denton, George | 4/16/10 | Other/Special | Wally and the bumpy road of Climate Change. Given at Lamont-Doherty Geological Observatory on the special occasion of the celebration of Wallace S. Broecker's 50th year as a professor at Columbia University. The other speakers were Professor Bender of Princeton, the President of Columbia University, the President of Arizona State University, and Al Gore. | 0 | 0 |
| Dieffenbacher-Krall, Ann | | National | Sorg, M.H., W.D. Haglund, E. David, W. Parker, S.A. Kiley, H.W. Borns, J. Burger, J. Dearborn, A. Dieffenbacher-Krall, D. Palman, and T. Solouki. 2010. Developing a Regional Forensic Taphonomy: Environmental and Climatic Inputs. American Academy of Forensic Sciences, Seattle, WA, USA. | 0 | 0 |
| Dieffenbacher-Krall, Ann | 2/2010 | International | Vandergoes, M. R. Newnham, A. Dieffenbacher-Krall, G. Denton, and J. Wilmshurst. 2010. Palaeoenvironmental changes since the Last Glacial Maximum in Southern New Zealand. VI Southern Connections Congress, Bariloche, Argentina. | 0 | 0 |
| Dieffenbacher-Krall, Ann | 2/2010 | International | Massaferro, J., A. Dieffenbacher-Krall, S. Brooks, M. Vandergoes. 2010. A chironomid temperature inference model to interpret patterns of climate changes in southern South America. VI Southern Connections Congress, Bariloche, Argentina. | 0 | 0 |
| Fastook, James L. | 9/19/2009 | International | Answering the Call: The Dilemma of RESOLUTION: How Good is Good Enough: A Case Study from Greenland, Fastook, at the WAIS Workshop http://neptune.gsfc.nasa.gov/wais/pastmeetings/Agenda_2009_withlinks.html | 0 | 0 |
| Fastook, James L. | 10/19/2009 | International | Glacial Flow Modeling on Mars, Fastook, Head, Marchant, and Forget at the GSA meeting http://www.geosociety.org/meetings/2009/ | 0 | 0 |
| Fastook, James L. | 12/14/2009 | International | The Dilemma of RESOLUTION: How Good is Good Enough: A Case Study from Greenland, Fastook, at the Fall AGU http://www.agu.org/meetings/fm09/ | 0 | 0 |
| Fastook, James L. | 3/1/2010 | International | MODELING AN ICE-RICH LOBATE DEBRIS APRON IN DEUTERONILUS MENSAE. Fastook, Head, Madeleine, Forget, and Marchant at LPSC41 http://www.lpi.usra.edu/meetings/lpsc2010/ | 0 | 0 |
| Fastook, James L. | 4/13/2010 | Other/Special | The Dilemma of RESOLUTION: How Good is Good Enough: A Case Study from Greenland, Fastook, at NSF headquarters, CReSIS Reverse-Site visit. | 0 | 0 |
| Fernandez, Ivan | November 2009 | International | Fatemi, Farrah R., Ivan J. Fernandez, Kevin S. Simon, D. Bryan Dail, and Lindsey E. Rustad. 2009. The Effect of Nutrient Availability On Soil Extracellular Enzyme Activity and CNP Dynamics.. (Paper 113-2). Presented at the ASA-CSSA-SSSA International Meetings. Pittsburgh, PA. November 1-4.. [CD-ROM]. ASA, CSSA, SSSA, Madison, WI. | 1 | 0 |
| Fernandez, Ivan | November 2009 | International | Burke, Andrea M., Ivan J. Fernandez, Aaron Weiskittel, and Robert Wagner. 2009. Predicting differences in forest stand nutrient uptake and removal: Potential effects of increased biomass removals for energy on long-term site sustainability. (Paper 346-10). Presented at the ASA-CSSA-SSSA International Meetings. Pittsburgh, PA. November 1-4. [CD-ROM]. ASA, CSSA, SSSA, Madison, WI. | 1 | 0 |
| Fernandez, Ivan | July 2009 | International | Fatemi, Farrah R., Ivan J. Fernandez, Kevin S. Simon, and D. Bryan Dail. 2009. Soil extracellular enzyme activities as indices of | 1 | 0 |



| | | | | | |
|------------------|------------|---------------|--|---|---|
| | | | microbial nutrient limitation and soil CNP dynamics. Soil Ecology Society Conference. Burlington, Vermont. July 12-15. | | |
| Fernandez, Ivan | July 2009 | International | SanClements, Michael D., Ivan J. Fernandez, Stephen A. Norton and Lindsey E. Rustad. 2009. Decadal responses in stream and soil Ca and Mg in an experimentally acidified watershed in the eastern United States. BIOGEMON 2009. June 29-July 3. Helsinki, Finland. | 1 | 0 |
| Fernandez, Ivan | July 2009 | International | Norton, Stephen A., Jirí Kopáček, Tomáš Navrátil, Ivan J. Fernandez, and Aria Amirbahman. 2009. Evolution of controls on phosphorus availability in aquatic ecosystems: peri-glacial to recent times. BIOGEMON 2009. June 29-July 3. Helsinki, Finland. | 1 | 0 |
| Fernandez, Ivan | July 2009 | State | SanClements, M.D., I.J. Fernandez, and S.A. Norton. 2009. Metal controls and acidity controls on forest floor and B-horizon extractable phosphorus in forested watersheds. 17th Annual Harold W. Borns, Jr. Symposium. Climate Change Institute, University of Maine, Orono, Maine. May 7-9, 2009. | 1 | 0 |
| Fernandez, Ivan | June 2009 | Local | Ecosystems as Ecological Indicators - Sensing Change | 0 | 0 |
| Fernandez, Ivan | March 2010 | State | An Ecological Observatory in a Climate of Change: Bear Brook at 20 Years | 0 | 0 |
| Hall, Brenda | 4/2010 | International | Deglacial history of the Ross Sea, Antarctica, given at Dartmouth College | 0 | 0 |
| Hall, Brenda | 11/ 2009 | International | Reconstructing climate change from ancient elephant seals in Antarctica. Given at Dirigo Pines Senior Community | 0 | 0 |
| Hall, Brenda | 11/2009 | International | Holocene glacial history and periods of reduced ice extent, Cordillera Darwin, southern Chile; Climate-Glaciers-Society Conference, Lamont-Doherty Earth Observatory, Palisades, New York. | 1 | 0 |
| Hall, Brenda | 9/2009 | International | Changes in Antarctic lakes suggest millennial-scale reorganizations of southern hemisphere atmospheric circulation; Comer Abrupt Climate Change meeting, Soldiers Grove, Wisconsin. | 0 | 0 |
| Hamilton, Gordon | 09/28/09 | Local | Ice Sheets and Sea Level Rise: It's Not Just the Melting That Matters. Wagner-Free Institute of Science, Philadelphia, PA. | 0 | 0 |
| Hamilton, Gordon | 10/09/09 | Regional | Ice Sheets and Sea Level Rise: It's Not Just the Melting That Matters. Tampa Bay Science and Information Symposium, St Petersburg, FL. | 0 | 0 |
| Hamilton, Gordon | 10/10/09 | State | Rapid sea level rise and Florida's coast. Florida Audubon Annual Meeting, Tampa Bay, FL. | 0 | 0 |
| Hamilton, Gordon | 09/29/09 | Local | Ice Sheets and Sea Level Rise: It's Not Just the Melting That Matters. Gulf of Maine Research Institute, Portland, ME. | 0 | 0 |
| Hamilton, Gordon | 11/5/09 | National | Ice Sheets and Sea Level Rise: It's Not Just the Melting That Matters. United States Congress, Washington DC. | 0 | 0 |
| Hamilton, Gordon | 12/18/09 | International | Terrestrial LiDAR Measurements on a Large East Greenland Outlet Glacier, American Geophysical Union, Fall Meeting, San Francisco, CA | 0 | 0 |
| Hamilton, Gordon | 1/21/10 | State | Sea level contributions from the polar ice sheets ? a new assessment for 2010-2100. North Carolina Sea Level Rise Forum, Raleigh, NC. | 0 | 0 |
| Hamilton, Gordon | 01/29/10 | International | A Rapid Connection Between the Ocean and the Greenland Ice Sheet. Arctic Frontiers Symposium, Tromso, Norway. | 0 | 0 |
| Hamilton, Gordon | 02/23/10 | International | Did warming of the North Atlantic Ocean trigger the recent dynamic changes in the Greenland Ice Sheet? American Geophysical Union, Ocean Sciences Meeting 2010, Portland, OR. | 0 | 0 |
| Hamilton, Gordon | 3/25/10 | International | Rapid ice sheet changes: southeast Greenland and beyond. Greenland Ice Sheet Workshop, Copenhagen, Denmark. | 0 | 0 |
| Hamilton, Gordon | 04/08/10 | National | Links between glacier length and glacier speed. Midwest Glaciology Meeting, Woods Hole, MA. | 0 | 0 |
| Jain, Shaleen | 09/21/2009 | Regional | Bell, K. P. and S. Jain, Sustainability Solutions Initiative: Coupled Systems Modeling, Maine EPSCoR Conference. | 0 | 0 |
| Kelley, Alice | 3/18/2010 | Local | Linking People and Ancient Landscapes http://www.tkl.org/2010lyceum.htm | 0 | 0 |
| Kelley, Joseph | 10-18-09 | International | Kelley, Joseph T., Daniel Belknap, & Stefan Claesson. "Drowned Archaeological Site Potential in the Western Gulf of Maine: an Example from Bass Harbor, ME." Geological Society of America. 2009 Portland GSA Annual Meeting. October 18-21. 2009. Portland. Oregon. | 0 | 0 |



| | | | | | |
|----------------|------------------|---------------|---|---|---|
| | | | GSA Abstracts with Programs Vol. 41, No. 7, p. 156. | | |
| Kelley, Joseph | 10-2009 | International | Brothers, L.L., Kelley, and Belknap, D.F., J.T., Barnhardt, W.A., and Andrews. B., 2009, Pockmarks and shallow natural gas: threats to offshore infrastructure development. Geological Society of America, Annual Meeting, GSA Abstracts with Programs Vol. 41, No. 7, p. 474. | 1 | 0 |
| Kelley, Joseph | | International | Landon, M., Kelley, J.T., Belknap, D.F., and Brothers, L., 2009, Assessment of geohazard potential for shallow water pockmarks: A case study from Belfast Bay, Maine. International Symposium for Frontiers in Offshore Geotechnics, Sidney, Australia. | 1 | 0 |
| Kelley, Joseph | 3-2010 | Regional | Brothers, L.L., Kelley, J.T., and Belknap, D.F., Koons, P.O., and Barnhardt, W.A., 2010, Pockmarks: self-scouring mud landforms. Northeast Section (combined with Southeast) Geological Society of America, GSA Abstracts with Programs Vol. 41, Baltimore, MD, March 13-16, 2010. | 1 | 0 |
| Kelley, Joseph | 7/7/ 2009 | Regional | Geology of the Maine Coast, Deans of Agricultural Colleges in the Northeast, Portland, ME July 7, 2009. | 0 | 0 |
| Kelley, Joseph | 6/19/10 | State | Acadia National Park, Interwoods presentation to Rangers and Volunteers, Geology of the Maine Coast. June 19, 2010. | 0 | 0 |
| Kelley, Joseph | March 14, 2010 | Regional | Wilson, K.R., Kelley, J.T., Belknap, D.F., Hamilton, G., and Loftin, C., 2010, Are Maine's salt marshes drowning? Salt pools as dynamic drivers of surficial change for six Maine salt marshes. Northeast Section (combined with Southeast) Geological Society of America, GSA Abstracts with Programs Vol. 41, Baltimore, MD, March 13-16, 2010. | 1 | 0 |
| Kelley, Joseph | March 14, 2010 | Regional | Kelley, J.T., Belknap, Brothers, L.L., Clarke, J.H., 2010, Somes Sound: Pockmarks in a fjord-like embayment surrounded by Acadia National Park. Northeast Section (combined with Southeast) Geological Society of America, GSA Abstracts with Programs Vol. 42, Baltimore, MD, March 13-16, 2010. | 1 | 0 |
| Kelley, Joseph | March 14, 2010 | Regional | Belknap, D.F., Kelley, J.T., Cooper, J.A., Jackson, D., McKenna, J., 2010, Comparison of glaciomarine seismic stratigraphy of the northwestern Irish coast with coastal Maine. Northeast Section (combined with Southeast) Geological Society of America, GSA Abstracts with Programs Vol. 42, Baltimore, MD, March 13-16, 2010. | 0 | 0 |
| Kelley, Joseph | March 13, 2010 | Regional | Brothers, L.L., Kelley, J.T., and Belknap, D.F., Koons, P.O., and Barnhardt, W.A., 2010, Pockmarks: self-scouring mud landforms. Northeast Section (combined with Southeast) Geological Society of America, GSA Abstracts with Programs Vol. 42, Baltimore, MD, March 13-16, 2010. | 1 | 0 |
| Kelley, Joseph | 7/72009 | State | Kelley, J.T., How we began to monitor Maine's beaches. State of Maine's Beaches Meeting, South Portland, ME, July 7, 2009. | 0 | 0 |
| Kelley, Joseph | | International | Landon, M., Kelley, J.T., Belknap, D.F., and Brothers, L., 2009, Assessment of geohazard potential for shallow water pockmarks: A case study from Belfast Bay, Maine. International Symposium for Frontiers in Offshore Geotechnics, Sidney, Australia. | 1 | 0 |
| Kelley, Joseph | 11/ 11/09 | Local | Lehigh University, Maine Seafloor and Gas-Escape Landforms, 11-12-2009 | 0 | 0 |
| Koons, Peter | 12/2009 | International | Pingree, K.A., Koons, P.O., Birkel, S.D., Segee, B., Zhu, Y., and Schaffler, M. (2009), Exploring Ice Sheets and Climate Change through Supercomputer Visualizations in Middle and Secondary Schools, Eos Trans. AGU, 90(54), Fall Meet. Suppl. | 0 | 0 |
| Koons, Peter | 12/2009 | International | Birkel, S. D., Koons, P. O., Pingree, K. A., Segee, B. E., Zhu, Y., Schaffler, M. Simple Climate Model and Web Interface for Inquiry-Based Learning at Middle and High School Grade Levels. Eos Trans. AGU, 90(54), Fall Meet. Suppl. | 0 | 0 |
| Kreutz, Karl | 3/12/10 | International | Winski, D., K. Kreutz, E. Osterberg, S. Campbell, C. Wake, S. Arcone, E. Kelsey, K. Volkerling, R. Hawley, J. Liccardi, Modeling energy balance and melt layer formation on the Kahiltna Glacier, Alaska, 40th Arctic Workshop, Winter Park, Colorado, March 12-14, 2010. | 3 | 1 |
| Kreutz, Karl | December 10 2009 | International | Kreutz, K., E. Osterberg, N. Bertler, A. Lorrey, C. Wake, S. Das, D. Fisher, P. Mayewski, and A. Putnam, Trans- Pacific climate variability over the past millennium, AGU Fall Meeting, San Francisco, December 10-14, 2009. | 0 | 0 |
| Kreutz, Karl | Dec 10 2009 | International | Kreutz, K., E. Osterberg, B. Gross, M. Handlev, C. Wake, K. Yalcin. Constraining recent lead pollution sources in the North Pacific using | 1 | 0 |



| | | | | | |
|----------------|--------------|---------------|---|---|---|
| | | | ice core stable lead isotopes, AGU Fall Meeting, San Francisco, December 10-14, 2009. | | |
| Kreutz, Karl | Dec 10 2009 | International | Campbell, S., K. Kreutz, C. Wake, E. Osterberg, S. Arcone, K. Volkening, M. Lurie, Application of ground penetrating radar and geodetics to the selection of an ice core drill site on the Kahiltna Glacier of Mount McKinley, Alaska, AGU Fall Meeting, San Francisco, December 10-14, 2009. | 1 | 2 |
| Kreutz, Karl | Oct 2 2009 | National | Koffman, B., K. Kreutz, D. Breton, M. Handley, A. Kurbatov, N. Dunbar, P. Mayewski, M. Wells, Late Holocene record of microparticle and aerosol iron deposition in West Antarctica at the WAIS Divide site, WAIS Divide science meeting, San Diego, CA, October 1-3, 2009. | 2 | 0 |
| Kreutz, Karl | Oct 2 2009 | National | Kreutz, K.J., Koffman, B., Mayewski, P., Kurbatov, A., Wells, M., Handley, M., and Sneed, S., Modeling Glacial- interglacial changes in dust and sea salt concentrations in West Antarctic deep ice cores: implications for Southern Hemisphere atmospheric dynamics, PAGES third open science meeting, Corvallis, OR, July 5-8 2009. | 1 | 0 |
| Kreutz, Karl | May 7, 2010 | Local | Kreutz, K.J., A. Wanamerker, and D. Introne, Construction of a continuous, high resolution and absolutely-dated marine chronology from the Gulf of Maine during the last millennium, Borns Symposium, UMaine, May 6-7, 2010. | 0 | 0 |
| Kreutz, Karl | May 7, 2010 | Local | Kane, E., O. McGlamery, K. J. Kreutz, and J. Wilson, Evaluating carbon emission scenario impacts on atmospheric CO2 and temperature using a dynamic systems model, Borns Symposium, UMaine, May 6-7, 2010. | 0 | 2 |
| Maasch, Kirk | 12/2009 | National | How Important is Spatial Resolution: Case Studies at 48, 12, and 4 km for the U.S., Latin America, and Southern Asia | 0 | 0 |
| Maasch, Kirk | May 27, 2010 | Local | CBHS 9th grade Sustainability Symposium at the University of Southern Maine | 0 | 0 |
| Maasch, Kirk | 1/4/2010 | Local | "Energy and Climate Change" presented to physics class at Casco Bay High School, Portland ME, | 0 | 0 |
| Maasch, Kirk | 10/30/09 | Local | "The Greenhouse Effect and Global Warming" presented to AP Environmental Science class at Casco Bay High School, Portland ME | 0 | 0 |
| Mayewski, Paul | 7/24/ 2009 | International | State of the Antarctic and Southern Ocean Climate System, Montreal SCAR AGCS Meeting | 0 | 0 |
| Mayewski, Paul | 7/31/2009 | State | Climate Change Institute, Portland | 0 | 0 |
| Mayewski, Paul | 9/18/2009 | International | Changes in the Southern Hemisphere Westerlies, British Antarctic Survey, Cambridge, UK | 1 | 0 |
| Mayewski, Paul | 9/25/ 2009 | International | State of the Antarctic and Southern Ocean Climate System, ETH, Bern, Switzerland | 0 | 0 |
| Mayewski, Paul | 10/15/2009 | Regional | Climate Change - Realities and Opportunities, NY, Attorney's Meeting | 0 | 0 |
| Mayewski, Paul | 10/29/2010 | International | State of the Antarctic and Southern Ocean Climate System, Punta Arenas, Chile | 0 | 0 |
| Mayewski, Paul | 10/30/2009 | International | Climate of Antarctica and South America, Punta Arenas, Chile | 0 | 0 |
| Mayewski, Paul | 11/5/2009 | State | Climate Change - Realities and Opportunities, University of Maine, Farmington | 0 | 0 |
| Mayewski, Paul | 1/26/2010 | State | Climate Change - 10green Initiative, Heinz Endowments, Pittsburgh, Pa. | 0 | 0 |
| Mayewski, Paul | 4/7/2010 | State | Climate Change - Realities and Opportunities, Chamberlain Lecture at the Portland Club | 0 | 0 |
| Mayewski, Paul | 4/14/2010 | Regional | The Southern Hemisphere Westerlies, Center for Atmosphere and Ocean Sciences, NYU | 0 | 0 |
| Mayewski, Paul | 4/22/2010 | Regional | Abrupt Climate Change, Dartmouth College | 0 | 0 |
| Mayewski, Paul | 5/8/2010 | State | Climate Change, University of Maine Graduation Address | 0 | 0 |
| Mayewski, Paul | 5/20/ 2010 | Regional | Climate Change and Health, Maine Medical Association, Portland | 0 | 0 |



| | | | | | |
|--------------------------|---------------------|---------------|--|---|---|
| Mayewski, Paul | 5/30/ 2010 | International | Sea ice reconstructions and implications, International Glaciological Society, Tromso, Norway | 0 | 0 |
| Ocampo-Raeder, Constanza | November 2009 | National | "Children and the Management of Common-Pool Resources in an Amazonian Forest." Latin American Studies Lecture Series. November 2009, Stanford University, Stanford, CA. | 0 | 0 |
| Ocampo-Raeder, Constanza | November 2009 | National | "Cultivating and Feeding Identity: The Cultural Significance Behind Indigenous Agriculture in the Peruvian Amazon." The Kresge College and CASFS Lecture Series, November 2009, University of California at Santa Cruz, Santa Cruz, CA. | 0 | 0 |
| Ocampo-Raeder, Constanza | March 2010 | Regional | "Race vs. Ethnicity: How to Interact Meaningfully with People Different from Ourselves." 8th Annual New England Latino Leadership Conference. University of Maine, Orono. March 2010. | 0 | 0 |
| Ocampo-Raeder, Constanza | April 2010 | Local | Cultivating Wildlife and Ancestors: Ese Eja Management Ecological Links in the Amazon. Wildlife Ecology Department Seminar Series. University of Maine, Orono. April 2010. | 0 | 0 |
| Olsen, Brian | October 2009 | International | Olsen, B.J., M.A. Etersson, R. Greenberg. Invited Symposium Participant. Calculations on the back of an envelope model: Applying seasonal fecundity models to species' range limits. Ecological Modelling for Enhanced Sustainability in Management – Conference of the International Society for Ecological Modelling, Québec City, P. Québec, Canada. | 0 | 0 |
| Olsen, Brian | August 2009 | National | Olsen, B.J., R. Greenberg, and J.R. Walters. August 2009. The selective forces behind bill dimorphism in the Swamp Sparrow: Natural or sexual? 127th stated meeting of the American Ornithologists' Union, Philadelphia, Pennsylvania. | 0 | 0 |
| Olsen, Brian | July 2009 | National | Tyler, M., R. Cowan, F. Dastoor, B. Olsen, J. Lockhart, M. Harris. July 2009. Helping students understand the process of science: Using inquiry-based labs and lecture videos in a large introductory biology course. NSF-AAAS Meeting: Vision and Change in Undergraduate Biology Education. Washington, D.C. | 2 | 0 |
| Peterson, Michael | October 12-16, 2009 | International | Christie A. Mahaffey, Mark Johnson and Michael Peterson, Use of the complex Morlet wavelet transform to characterize dynamic cetacean gaits in locomotion studies, Podium session, 18th Biennial Conference on the Biology of Marine Mammals, Society for Marine Mammalogy, Quebec, Canada, 12-16 October, 2009 | 1 | 0 |
| Peterson, Michael | October 12-16, 2009 | International | 3. Michael L. Peterson, Sean K. Todd, J. Kaitlyn Allen, Christie A. Mahaffey, Jessica K. Damon, Jessica L. Hamilton and Robert D. Kenney, Assessing Geographic and Acoustic Mysticete Shipstrike Risk in the Gulf of Maine, Poster, 18th Biennial Conference on the Biology of Marine Mammals, Society for Marine Mammalogy, Quebec, Canada, 12-16 October, 2009 | 2 | 2 |
| Robinson, Brian S. | June 20, 2009 | State | 2009 Climate Change and the Archaeology of Maine's Native People. Presented at the Interwoods Seasonal Training, June 20, 2009. Acadia National Park, College of the Atlantic Campus, Bar Harbor. | 0 | 0 |
| Roscoe, Paul B. | April 2010 | International | The Conditions for Cannibalism | 0 | 0 |
| Roscoe, Paul B. | May 2010 | Local | Culture and Climate Change: A Research Proposal | 0 | 0 |
| Roscoe, Paul B. | June 2, 2010 | International | Remembering the Dead: The Nation-State and the Production of Honour Presented at the Ethnological Seminar, University of Lucerne, Switzerland. | 0 | 0 |
| Sandweiss, Dan | Nov. 2, 2009 | Local | The Prehistory of El Niño in Ancient Peru. Hudson Museum Climate Change Lecture Series. Collins Center for the Arts, University of Maine. | 0 | 0 |
| Sandweiss, Dan | October, 2009 | International | El Niño, the Sediment Cycle, and Human Impacts in North Coastal Peru. NSF Conference on "Global Perspective on Long-Term Human Ecodynamics". Humboldt Research Institute, Steuben, ME. | 0 | 0 |
| Sandweiss, Dan | 5/3/10 | Regional | El Niño in Peruvian Prehistory. Yale University, Department of Anthropology. | 0 | 0 |
| Sandweiss, Dan | May 19, 2010 | International | External Discussant. Lake Baikal Archaeological Project Workshop. University of Alberta, Edmonton, AL Canada. | 0 | 0 |



| | | | | | |
|------------------|---------------|---------------|---|---|---|
| Saros, Jasmine | November 2009 | International | Saros, J.E. Response of high-elevation lakes to climate change: coupled hydrologic and nitrogen cycles. Invited seminar, Lund University, Lund, Sweden. | 0 | 0 |
| Saros, Jasmine | August 2009 | National | Guyette, M., C. Loftin, J. Zydlewski & J.E. Saros. Historical records of anadromous fish runs from sediment cores in Penobscot River watershed lakes, Maine. American Fisheries Society annual meeting, Nashville, TN. | 1 | 0 |
| Saros, Jasmine | August 2009 | National | Kissman, C.E.H., M. Winder, C.E. Williamson & J.E. Saros. Deuterium stable isotopes: What do they reveal about food sources for Diaptomus sp. and cladocerans in alpine and subalpine lakes? Ecological Society of America annual meeting, Albuquerque, NM. | 0 | 0 |
| Saros, Jasmine | October 2009 | International | Rose, K.C., C.E. Williamson, J.E. Saros & C. Kissman. Indicators of Allochthony in High Mountain Lakes. Global Lakes Ecological Observatory Network (GLEON) Meeting 9, Boulder Junction, WI. | 1 | 0 |
| Saros, Jasmine | October 2009 | National | Ditzler, K.E., J.E. Saros, K.S. Simon & M.T. Kinnison. Impacts of White Perch Introductions on Food Web Dynamics: Paleolimnological and Experimental Analysis of Zooplankton Grazing and Nutrient Cycling. 29th International Symposium of the North American Lake Management Society, Hartford, Connecticut. | 1 | 0 |
| Saros, Jasmine | November 2009 | International | Ditzler, K.E., J.E. Saros & K.S. Simon. Impacts of White Perch Introductions on Food Web Dynamics: Paleolimnological Record of Zooplankton Grazing and Nutrient Cycling. University of Nottingham Environmental and Geomorphological Sciences Research Seminar Series, Nottingham, UK. | 1 | 0 |
| Saros, Jasmine | March 2010 | State | Ditzler, K.E., J.E. Saros, K.S. Simon & M.T. Kinnison. Impacts of White Perch Introductions on Food Web Dynamics: Paleolimnological and Experimental Analysis of Zooplankton Grazing and Nutrient Cycling. Maine Water Conference, Augusta, ME. | 1 | 0 |
| Saros, Jasmine | May 2010 | International | Rose, K.C., Williamson, C.E., Saros, J.E., and Kissman, C.E.H. What can dissolved absorbance tell us about lake ecology? Global Lake Ecological Observatory Network (GLEON) Meeting 10, Torres, Brazil. | 1 | 0 |
| Saros, Jasmine | June 2010 | International | Arnett, H.A., Saros, J.E. and M.A. Mast. Quantifying Surface Water Nitrate Concentrations that Elicit Diatom Community Changes in Lakes across the Rocky Mountains. American Society for Limnology and Oceanography. Santa Fe, New Mexico, USA. | 1 | 0 |
| Saros, Jasmine | June 2010 | International | Ditzler, K.E., Saros, J.E., Simon, K.S., Kinnison, M.T. and S. McGowan. Impacts of white perch introduction on lake plankton: combining paleolimnological and whole-lake biomanipulation approaches. American Society for Limnology and Oceanography. Santa Fe, New Mexico, USA. | 1 | 0 |
| Saros, Jasmine | June 2010 | International | Wigdahl, C.R. and J.E. Saros. Indirect effects of climate on the use of diatoms as indicators of paleosalinity in prairie regions (Great Plains, USA). American Society for Limnology and Oceanography. Santa Fe, New Mexico, USA. | 1 | 0 |
| Saros, Jasmine | June 2010 | International | Rose, K.C., Williamson, C.E., Saros, J.E., and Kissman, C.E.H. Indicators of Allochthony. American Society for Limnology and Oceanography. Santa Fe, New Mexico, USA. | 1 | 0 |
| Saros, Jasmine | June 2010 | International | Kissman, C.E.H., Williamson, C.E., Saros, J.E., and K.C. Rose. The Role of Climate Induced Trophic Forcing in Alpine Lake Ecosystems: Coupling Plankton Dynamics to Sediment Signals. American Society for Limnology and Oceanography. Santa Fe, New Mexico, USA. | 1 | 0 |
| Saros, Jasmine | June 2010 | International | Slemmons, K. and J.E. Saros. Release of reactive nitrogen by melting alpine glaciers: effects on diatom diversity in lake ecosystems over the last century. American Society for Limnology and Oceanography. Santa Fe, New Mexico, USA. | 1 | 0 |
| Saros, Jasmine | June 2010 | International | Saros, J.E., Wolfe, A.P., Clow, D.W., Rose, K.C., and C.E. Williamson. Melting Alpine Glaciers Enrich Lake Ecosystems With Reactive Nitrogen and Reduce Biodiversity. American Society for Limnology and Oceanography. Santa Fe, New Mexico, USA. | 1 | 0 |
| Sobolik, Kristin | May, 2010 | Local | Oldest Dog in the New World, Borns Symposium, UMaine | 2 | 0 |
| Sorg, Marcella | 2010 | National | Sorg, Marcella H. William Haglund et al. (2010) Developing a Regional Forensic Taphonomy: Climatologic and Environmental Inputs. | 0 | 0 |



| | | | | | |
|------------------|----------------|---------------|--|---|---|
| | | | Annual meeting of the American Academy of Forensic Sciences, Seattle, WA | | |
| Sorg, Marcella | 2010 | National | Sorg, Marcella H. (2010) Report from Maine. National Institute on Drug Abuse, Community Epidemiology Workgroup, January, 2010, San Diego, CA (invited). | 0 | 0 |
| Sorg, Marcella | 2010 | State | Sorg, Marcella H. (2010) Update on Maine's Drug Abuse Indicators. Meeting of the Maine Substance Abuse Services Commission (invited). | 0 | 0 |
| Sorg, Marcella | 2010 | Local | Sorg, Marcella H. (2010) Maine Substance Abuse Indicators with and Update on Drug-Induced Deaths in Kennebec and Somerset Counties. Meeting of the Overdose Prevention Team for Kennebec and Somerset Counties (invited). | 0 | 0 |
| Sorg, Marcella | 2009 | Regional | Sorg, Marcella H. (2009) Outdoor Scene Death Investigation in the Northeast. Meeting of the New England Division of the International Association for Identification, Freeport ME (Invited). | 0 | 0 |
| Sorg, Marcella | 2009 | Regional | Sorg, Marcella H., Harold Borns et al. (2009) Developing a Regional Forensic Taphonomy: Climatologic and Other Environmental Inputs. Climate Change Institute Annual Borns Symposium, Orono ME | 0 | 0 |
| Sorg, Marcella | 2009 | State | Sorg, Marcella H. (2009) Fire, Fragmentation and Bone. New England Seminar in Forensic Sciences, Colby College, Waterville ME. | 0 | 0 |
| Sorg, Marcella | 2009 | National | Sorg, Marcella H. (2009) Developing a Regional Forensic Taphonomy: Climatologic and Environmental Inputs. Grantees Meeting, National Institute of Justice. Department of Justice, Bethesda MD. | 0 | 0 |
| Sorg, Marcella | 2009 | State | Sorg, Marcella H. (2009) Maine Taphonomy Workshop Overview. Interdisciplinary Team Workshop on Developing Regional Taphonomic Standards for the Northeast. Maine Criminal Justice Academy, Vassalboro, ME. | 0 | 0 |
| Sorg, Marcella | 2009 | National | Brogdon, B.G. Marcella H. Sorg, and Kerriann Marden (2009) Fingering a Murderer: A Successful Anthropological and Radiological Collaboration. Annual Meeting of the American Academy of Forensic Sciences, Denver, CO. | 0 | 0 |
| Zaro, Gregory D. | May 6, 2010 | Local | Zaro, Gregory and Alissa M. Dubois (2010). Desert Resource Management and Punctuated Environmental Change in Prehispanic and Spanish Colonial Peru. Paper presented at the 18th Annual Harold W. Borns, Jr., Symposium, Climate Change Institute, Orono, ME, May 6-7, 2010. | 0 | 1 |
| Zaro, Gregory D. | April 16, 2010 | National | Houk, Brett A. and Gregory Zaro (2010). Architectural change and stasis at an ancient Maya center: Evaluating construction history at La Milpa, Belize. Paper presented at the 75th Annual Meeting of the Society for American Archaeology, St. Louis, Missouri, April 14-18, 2010 | 0 | 0 |
| Zaro, Gregory D. | July 2, 2009 | International | Houk, Brett A. and Gregory Zaro (2009). Architectural history and ritual planning at La Milpa: a reconsideration. Paper presented at the 7th Annual Meeting of the Belize Archaeology Symposium, Belize City, Belize, July 1-3, 2009. | 0 | 0 |

CONFERENCES/SYMPOSIA/MEETINGS ATTENDED: INTERNATIONAL/NATIONAL/REGIONAL/STATE/LOCAL

| Name | Date | Scope | Conference | Location | GS | US |
|--------------------|---------------------|---------------|--|-----------------------|----|----|
| Belknap, Daniel F. | October 18-21, 2009 | International | Geological Society of America Annual Meeting and Exposition www.geosociety.org/meetings | Portland, Oregon, USA | 2 | 0 |
| Belknap, Daniel F. | March 14-16, 2010 | Regional | Geological Society of America Joint Northeast-Southeast Section Meeting www.geosociety.org/sectdiv/northe/2010mtg/ | Baltimore, MD | 2 | 8 |



| | | | | | | |
|------------------------|-----------------------|---------------|--|---|---|---|
| Belknap, Daniel F. | March 22, 2010 | State | Maine Sea Grant Symposium 2010: Marine Science that Matters www.seagrant.umaine.edu | Wells Conference Center, University of Maine, Orono, ME | 2 | 0 |
| Belknap, Daniel F. | May 7-8, 2010 | Local | 17 th Annual Harold Borns Symposium, Climate Change Institute, University of Maine http://www.climatechange.umaine.edu/ | UMaine, Graduate School, Stodder Hall | 3 | 0 |
| Chawathe, Sudarshan S. | October 2009 | International | The 12th International IEEE Conference on Intelligent Transportation Systems (ITSC). | St. Louis, Missouri. | 0 | 0 |
| Chawathe, Sudarshan S. | May 2010 | International | METROSIMPOSIO 2010 SIMPOSIO DE TECNOLOGÍAS E INGENIERÍAS PARA EL METRO DE BOGOTA | Bogota, Colombia | 0 | 0 |
| Chawathe, Sudarshan S. | June 2010 (scheduled) | National | Inspire-CT 2010 - Inspiring Student Interest in Computational Thinking An NSF-Supported Faculty Workshop on Vertically Integrated Student Teams | Lubbock, Texas | 0 | 0 |
| Chawathe, Sudarshan S. | October 2009 | International | IEEE Intelligent Transportation Systems Society's Board of Governors Meeting. | St. Louis, Missouri. | 0 | 0 |
| Chawathe, Sudarshan S. | October 2009 | International | IEEE Intelligent Transportation Systems Society's Executive Committee Meeting. | St. Louis, Missouri. | 0 | 0 |
| Fastook, James L. | 9/28- 10/1/2009 | International | West Antarctic Ice Sheet Workshop WAIS: Past Meetings | Seattle, Wa | 0 | 0 |
| Fastook, James L. | Oct 19-22 2009 | International | 2009 GSA Annual Meeting http://www.geosociety.org/meetings/2009/ | Portland, OR | 0 | 0 |
| Fastook, James L. | Dec 14-18 2009 | International | 2009 Fall AGU http://www.agu.org/meetings/fm09/ | San Francisco, CA | 0 | 0 |
| Fastook, James L. | March 1-5,2010 | International | 41st Lunar and Planetary Science Conference http://www.lpi.usra.edu/meetings/lpsc2010/ | The Woodlands, TX | 0 | 0 |
| Hall, Brenda | September 2009 | International | Comer Science and Education Foundation Abrupt Climate Change Meeting | Soldiers Grove, Wisconsin | 1 | 0 |
| Hall, Brenda | November 2009 | International | Climate-Glacier-Society Conference | Lamont-Doherty Earth Observatory, Palisades, NY | 1 | 0 |
| Hamilton, Gordon | 10/09-10/09 | Regional | Tampa Bay Science and Information Symposium | St Petersburg, FL | 0 | 0 |
| Hamilton, Gordon | 10/10-11/09 | State | Florida Audobon Annual Meeting | Tampa Bay, FL | 0 | 0 |
| Hamilton, Gordon | 12/13-18/09 | International | American Geophysical Union Fall Meeting | San Francisco, CA | 3 | 0 |
| Hamilton, Gordon | 01/21-22/10 | State | North Carolina Sea Level Rise Forum | Raleigh, NC | 0 | 0 |
| Hamilton, Gordon | 01/27-29/10 | International | Arctic Frontiers | Tromso, Norway | 0 | 0 |
| Hamilton, Gordon | 02/23-26/10 | International | American Geophysical Union Ocean Sciences Meeting | Portland, OR | 0 | 0 |
| Hamilton, Gordon | 03/25-26/10 | International | Greenland Ice Sheet Workshop | Copenhagen, Denmark | 0 | 0 |
| Hamilton, Gordon | 04/08-09/10 | National | Midwest Glaciology Meeting | Woods Hole, MA | 5 | 0 |
| Hooke, Roger | 10/18-21/ 2009 | International | Geological Society of America annual meeting | Portland, OR | 0 | 0 |
| Hooke, Roger | 11/5/2009 | State | Geological Society of Maine fall meeting | Farmington, ME | 0 | 0 |
| Hooke, Roger | May 7-8, 2009 | Other/Special | Annual CCI Borns Symposium | Orono | 0 | 0 |



| | | | | | | |
|--------------------------|------------------|---------------|---|--------------------------------|---|---|
| Hooke, Roger | June 2-3, 2009 | Local | Review of alluvial fan risk assessment plan for Maricopa County, Arizona | Phoenix, AZ | 0 | 0 |
| Kelley, Joseph | July 10, 2009 | State | State of Maine's Beaches | South Portland | 0 | 0 |
| Kelley, Joseph | July 12, 2009 | Regional | Northeast Agricultural Colleges | Portland, ME | 0 | 0 |
| Kelley, Joseph | Oct. 4-9, 2009 | International | Gulf of Maine Symposium: Advancing Ecosystem Research in the Gulf of Maine | St Andrews, New Brunswick, CA | 0 | 0 |
| Kelley, Joseph | Oct. 18-21, 2009 | International | Geological Society of America, 2009 Portland GSA Annual Meeting | Portland, OR | 0 | 0 |
| Kelley, Joseph | 3/13-16/2010 | Regional | Northeast Section (combined with Southeast) Geological Society of America | Baltimore, MD | 0 | 0 |
| Kelley, Joseph | June 19, 2010 | State | Interprewoods | Acadia National Park | 0 | 0 |
| Kreutz, Karl | May 6-7 2010 | Local | Borns Symposium | UMaine | 3 | 2 |
| Kreutz, Karl | 3/23-25/ 2010 | National | Ice core working group meeting | Denver, CO | 0 | 0 |
| Kreutz, Karl | March 2-3 2010 | National | Ice drilling program office senior advisory board meeting | Washington, DC | 0 | 0 |
| Kreutz, Karl | Dec. 10-14 2009 | International | American Geophysical Union meeting | San Francisco, CA | 2 | 0 |
| Kreutz, Karl | Oct. 2-3 2009 | National | WAIS Divide science meeting | San Diego, CA | 1 | 0 |
| Kreutz, Karl | July 6-9 2009 | International | PAGES Open Science Meeting | Corvallis, OR | 0 | 0 |
| Maasch, Kirk | December 2009 | National | American Geophysical Union Fall Meeting http://www.agu.org/meetings/fm09/ | San Francisco, CA | 0 | 0 |
| Maasch, Kirk | May 6-7 2010 | Local | 18th Hal Borns Symposium http://cci.um.maine.edu/ocs/index.php/Borns2010/2010/schedConf/schedule | Orono, ME | 0 | 0 |
| Maasch, Kirk | May 12-13 2010 | State | Maine's Sustainability Solutions Initiative Research Retreat | Orono, ME | 0 | 0 |
| Maasch, Kirk | June 14-16 2010 | International | Workshop on Polar to Tropical Connections http://www.polartropical.org/ | Castine, ME | 0 | 0 |
| Ocampo-Raeder, Constanza | March 2010 | Regional | 8th Annual New England Latino Leadership Conference. | University of Maine, Orono. | 0 | 0 |
| Ocampo-Raeder, Constanza | April 2010 | International | "Violence in Latin America" Annual Colby Latin American Studies Symposium | Colby College, Lewiston, ME | 0 | 0 |
| Ocampo-Raeder, Constanza | April 2010 | State | "1810 Declaration of Independence" Latin American Studies Symposium | Bowdoin College, Brunswick, ME | 0 | 0 |
| Olsen, Brian | October 2009 | International | Ecological Modelling for Enhanced Sustainability in Management – Conference of the International Society for Ecological Modelling | Québec City, P. Québec, Canada | 0 | 0 |
| Olsen, Brian | August 2009 | National | 127th stated meeting of the American Ornithologists' Union | Philadelphia, PA, USA | 0 | 0 |
| Oswald, Gordon | 10/08/2010 | Local | Initial collaborative research meeting with colleagues from CReSIS, University of Kansas. | University of Kansas | 0 | 0 |
| Roscoe, Paul B. | April 2010 | International | Annual conference of the Society for American Archaeology | St Louis, MO | 0 | 0 |
| Roscoe, Paul B. | May 2010 | State | Borns Symposium | Orono, Maine | 0 | 0 |



| | | | | | | |
|--------------------|---------------------|---------------|---|---|---|---|
| Sandweiss, Dan | October 15-18, 2009 | International | Global Perspectives of Long-term Human Ecodynamics, sponsored by the US National Science Foundation Office of Polar Programs Arctic Social Sciences Program | Humboldt Research Center at Eagle Hill, Maine | 0 | 0 |
| Sandweiss, Dan | December 2-5, 2009 | International | Council of Graduate Schools Annual Meeting | San Francisco, CA | 0 | 0 |
| Sandweiss, Dan | April 14-18, 2010 | International | Society for American Archaeology Annual Meeting | St. Louis, MO | 0 | 0 |
| Sandweiss, Dan | May 18-20, 2010 | International | Lake Baikal Archaeological Project Workshop | University of Alberta, Edmonton AL Canada | 0 | 0 |
| Schauffler, Molly | October 2009 | State | Maine Science Teachers Association | Gardiner ME | 0 | 0 |
| Schauffler, Molly | June 2010 | National | Integrating science and mathematics research into teaching | UMaine | 5 | 0 |
| Sobolik, Kristin | October, 2009 | National | University Corporation for Atmospheric Research (UCAR) Annual Meeting | Boulder, CO | 0 | 0 |
| Vandergoes, Marcus | February 2010 | International | VI Southern Connections Congress | Bariloche, Argentina. | 0 | 0 |
| Zaro, Gregory D. | October 3-4, 2009 | Regional | 28th Annual Meeting of the Northeast Conference on Andean Archaeology and Ethnohistory | New Paltz, New York | 0 | 1 |
| Zaro, Gregory D. | July 1-3, 2009 | International | 7th Annual Meeting of the Belize Archaeology Symposium | Belize City, Belize | 0 | 0 |

RESEARCH EXPEDITIONS AND FIELD TRIPS

| Name | Date | Description | GS | US |
|--------------------|--------------------|--|-----------|-----------|
| Belknap, Daniel F. | 06/25 - 07/01/2009 | Geophysical surveying of Lough Swilly, Ireland with Joe Kelley (UMaine) and Andrew Cooper et al. of University of Ulster, Coleraine, funded by UUC research funds. | 0 | 0 |
| Belknap, Daniel F. | 07/13-07/23/2010 | Reconnaissance of glaciers and glaciated landscapes in southeastern Alaska. Self-funded. | 0 | 0 |
| Belknap, Daniel F. | 08/09/09 | Geological Society of Maine Summer Field Trip, Camden-Rockport region, led by Henry Berry, Maine Geological Survey. | 0 | 0 |
| Belknap, Daniel F. | 09/12/09 | ERS-200 Earth Systems class field trip to Acadia National Park, with other class professors Peter Koons and Chris Gerbi, with 10 students and 1 TA. | 1 | 10 |
| Belknap, Daniel F. | 03/10/10 | Field trip to Popham Beach - Morse River Inlet to inspect area of concern to Maine Geological Survey and State Park for continuing severe erosion. Self-funded. | 0 | 0 |
| Belknap, Daniel F. | 04/22-04/23/10 | Walpole, Maine, Darling Marine Center. ERS-317 Geophysics field trip to demonstrate marine geophysical equipment in the Damariscotta River aboard the UMaine research vessel R/V Ira C, with Prof. Peter Koons and his class members. Second day - coastal geology field trip examining related onshore environments and features. | 0 | 12 |
| Belknap, Daniel F. | 04/24/10 | ERS-534 Coastal Sedimentology class field trip to west-central coastal Maine. | 5 | 0 |
| Belknap, Daniel F. | 05/14/10 | Geoarchaeology research at Makowski Farm, Costigan ME, with former student Peter Leach, UM faculty Alice Kelley and Brian Robinson. 1 graduate student. and 1 technical assistant. Training on new Ground Penetrating Radar svstem. and use for practical | 1 | 0 |



| | | | | |
|------------------------|----------------------------|--|---|---|
| | | surveying at Robinson's long-term research site on the bank of the Penobscot River. | | |
| Chawathe, Sudarshan S. | September 2009 | Annual field trip of the Climate Change Insitute. Bryant Pond, Maine. | 0 | 0 |
| Denton, George | June and July, 2009 | Expedition to the eastern Sierra Nevada mountains in California and to the Wind River mountains in Wyoming. The purpose was to collect samples for exposure dating of moraines deposited at the height of the last ice age, as well as during the last glacial/interglacial climate transition. Vehicles were used for transportattion to the last glacial moraines. Horses were used for transportation to the high plateau of the Sierra Nevada. | 3 | 0 |
| Denton, George | January and February, 2010 | Southern Alps of New Zealand. The purpose was to collect samples for exposure dating of moraines and to map the glacial geomorphogy of the central Southern Alps. Transportation in the field areas in the Mackenzie Basin and in the Arrowsmith Range was by vehicle and helicopter. | 2 | 0 |
| Denton, George | June, 2010 | Expedition to the Tien Shen Mountains of western China. The purpose was to collect exposure-age samples from moraine sets in order to develop the chronology of the last glacial maximum in central Asia. | 1 | 0 |
| Denton, George | April, 2010 | Expedition to the Southern Patagonian Icefield to collect samples for exposure dating of Holocene moraines, thus developing the recent history of the ice field, which is thought to be contributing a major fraction of the water that is contributing to sea-level rise. | 0 | 0 |
| Hall, Brenda | July 2009 | Trip to examine and collect samples from glacial deposits in the Wind River Range, Wyoming | 2 | 0 |
| Hall, Brenda | Dec.-Jan. 2009/2010 | Field work in the Dry Valleys of Antarctica, collecting and characterizing glacial sediments | 2 | 0 |
| Hamilton, Gordon | 07/31/09-08/08/09 | East Greenland: glaciological fieldwork on Helheim Glacier | 0 | 0 |
| Hamilton, Gordon | 08/18/09-08/26/09 | East Greenland: glaciological fieldwork on Helheim and Kangerdlugssuaq glaciers | 1 | 0 |
| Hamilton, Gordon | 08/28/09-09/14/09 | East Greenland: Glaciological fieldwork on Vestfjord and Nioghalvfjærdsfjorden glaciers, Greenpeace Arctic Impacts science cruise. | 0 | 0 |
| Hamilton, Gordon | 05/15/10-05/28/10 | Alaska: glaciological fieldwork on Hubbard Glacier | 0 | 0 |
| Hooke, Roger | October 7-11 | Visiting alluvial fans in southern California with J. P. Milana of Argentina. I studied these fans in 1963-4 and some of the processes I derscribed have been questioned. Milana wanted to see the fans first hand, as he has seen similar processes elsewhere. | 0 | 0 |
| Hooke, Roger | October 12-16, 2009 | Participated in a Geological Society of America field trip to view results of the catastrophic Missula foods in the channeled scablands of eastern Washington (state). | 0 | 0 |
| Hooke, Roger | October 22-24 | Participated in a Geological Society of America field trip to view breccias on Whidby Island, Washington (state). These features are attributed by some to glacial outburst floods. | 0 | 0 |
| Kelley, Alice | 6/1/2010 - 8/25/10 | Mapping in the Bucksport ME 7.5' Quadrangle | 0 | 0 |
| Kelley, Joseph | June 27-July 1, 2009 | Geophysical Cruise, Lough Swilly, Republic of Ireland | 0 | 0 |
| Kelley, Joseph | October 22-23, 2009 | Geo-hazards of the Oregon Coast, Geological Society of America Annual Meeting | 0 | 0 |
| Kelley, Joseph | July 25-27, 2009 | Geophysical Cruise, Belfast Bay, ME with US Geological Survey | 0 | 0 |
| Kreutz, Karl | May 2010 | Glaciology fieldwork in Denali National Park | 3 | 1 |
| Kurbatov, Andrei | August, 2009 | Kangerlussuaq, Greenland | 0 | 2 |
| Kurbatov, Andrei | Nov. -Dec. 2009 | Allan Hills, Antarctica | 2 | 0 |
| Kurbatov, Andrei | February-March, 2010 | Tupungatito volcano, Chile | 4 | 0 |



| | | | | |
|--------------------------|-------------------------------|--|---|----|
| Mayewski, Paul | February 4 - March 4, 2010 | Reconnaissance Ice Coring, Tupungatito, Chilean Andes | 4 | 1 |
| Mayewski, Paul | August 15 - August 30, 2010 | Western Greenland Ice Sampling | 0 | 2 |
| Ocampo-Raeder, Constanza | Summer 2009 | Ethnographic research in traditional fishing villages of the Northern Coast of Peru (Piura) | 0 | 0 |
| Robinson, Brian S. | June 2009 | Archaeological Field School in Machias Maine with 11 undergraduate students and 3 graduate students. Four weeks of intensive archaeological field work. MAPI funded field school. Funding extended. | 0 | 11 |
| Sandweiss, Dan | July 24-August 12, 2090 | Fieldwork in the Supe Valley, Peru, on environmental change and cultural change in the Late Preceramic Period. With M.E. Moseley, D.K. Keefer, and C.R. Ortloff | 0 | 0 |
| Saros, Jasmine | July 6-18, 2009 | Field expedition to the Beartooth Mountains of Montana to conduct research as part of NSF-funded project. | 3 | 0 |
| Saros, Jasmine | July 19-30, 2009 | Field expedition to Glacier National Park to conduct research on glacially-fed lakes as part of an NSF-funded project | 1 | 0 |
| Saros, Jasmine | August 3-13, 2009 | Field expedition to Isle Royale National Park in Lake Superior to conduct research as part of an NPS-funded project | 2 | 0 |
| Saros, Jasmine | Nov. 1-15, 2009 | Field expedition to Torres del Paine National Park in Patagonia, Chile, to conduct field research as part of a project funded by a Churchill award | 2 | 0 |
| Vandergoes, Marcus | December 2009 | Collection of modern lake sediment samples from small lakes in North Island, New Zealand. These sites contribute to the extension of our modern lake dataset. | 0 | 0 |
| Vandergoes, Marcus | December 2009 | Collection of sediment cores from lakes in North Island, New Zealand. Collaboration with Kat Holt, Massey University, New Zealand addressing the timing of Holocene climate change. | 0 | 0 |
| Vandergoes, Marcus | July 2009 | Collection of 3-5m lake sediment cores Lake Ohau, South Island, New Zealand, as pilot investigation for deep drilling of large glacial lake systems in New Zealand. | 0 | 0 |
| Zaro, Gregory D. | May 21, 2010--June 30, 2010 | La Milpa Core Project. Archaeological Excavations at the Ancient Maya Site of La Milpa, Belize. | 0 | 0 |
| Zaro, Gregory D. | January 31, 2010--May 1, 2010 | Desert Resource Management and Punctuated Environmental Change in Prehispanic and Spanish Colonial Peru. Archaeological Excavations at the Cola de Zorro Archaeological Site, Department of Arequipa, Peru | 0 | 1 |

OTHER INDICATORS

| Name | Description |
|-----------------------------------|---|
| Dieffenbacher-Krall, Ann | I attended a short course, Analysis of Environmental and Biological Data, at University College, London, in May 2009. I spent several days (April 2009) using the extensive chironomid reference collection housed at the University of New Brunswick, Fredericton, to develop a regional taxonomy and a collaborative regional photographic reference database. |
| Mayewski, Paul Sandweiss, Dan. | Many invited lectures noted later. Visit to Montenegro (new country in Balkans) to explore cultural and educational exchange. Sponsored by the Maine National Guard Country Partnership Program and hosted by the U.S. Embassy in Podgorica, Montenegro. With Eric Rolfson. July 5-10, 2009. |



MEDIA PRESENTATIONS CREATED

| Name | Type | Description | GS | US |
|------------------------|-------------|---|-----------|-----------|
| Chawathe, Sudarshan S. | Web site. | Designed, implemented, edited, and maintained the Computer Science Department Web site. http://www.cs.umaine.edu/ | 0 | 0 |
| Kurbatov, Andrei | Web site | Allan Hills Project web site http://cci.um.maine.edu/2MBIA/ | 1 | 2 |
| Kurbatov, Andrei | Web site | International PTC program initiated by Climate Change Institute http://www.polartropical.org/ | 0 | 0 |

SERVICE: TO PROFESSION/DEPARTMENT/COLLEGE/UNIVERSITY SYSTEM/ STATE GOVERNMENT AGENCIES/ GENERAL PUBLIC & LOCAL CUMMUNITIES/ PRE K-12 EDUCATION

To Profession:

| Name | Type | Description |
|------------------------|------------------------------------|--|
| Belknap, Daniel F. | Conference Section Chair | Geological Society of America Annual Meeting, Portland, Oregon. October 18, 2010. Co-Convenor (With Dr. Daniel J. Stanley, Smithsonian Institution) of Theme Session T131 - Ancient Coastal and Subsea Sites: New Findings and Problems (GSA Archaeological Geology Division and Smithsonian Institution). |
| Belknap, Daniel F. | Professional Association Officer | President, Northeast Section of the Geological Society of America |
| Chai, Fei | Advisory Board | International Advisory Committee for the State Key Lab at the Xiamen University, China |
| Chai, Fei | Advisory Board | International Advisory Committee For a 973 Research Project at the Ocean University of China. |
| Chai, Fei | Conference Section Chair | PICES Annual Meeting in Jeju Island, South Korea. |
| Chai, Fei | Conference Section Chair | International Symposium on Boundary Current Dynamics: its connection with open-ocean and coastal processes and responses to global climate change. Qingdao, China. |
| Chai, Fei | Conference Section Chair | 8th Cross-Strait Conference on Marine Research in Taiwan. |
| Chai, Fei | Editorial Board | Biogeosciences. |
| Chai, Fei | Editorial Board | Acta Oceanologica Sinica. |
| Chawathe, Sudarshan S. | Professional Association Officer | 1/2005–present. IEEE Intelligent Transportation Systems Society (ITSS). Member of the Board of Governors. |
| Chawathe, Sudarshan S. | Award Committee Member | 2/2007–present. IEEE Intelligent Transportation Systems Society (ITSS). Member, Dissertation Award Committee. |
| Chawathe, Sudarshan S. | Professional Association Committee | 1/2009–present. IEEE Intelligent Transportation Systems Society (ITSS). Vice President for Administrative Activities. |



| | | |
|------------------------|------------------------------------|--|
| Chawathe, Sudarshan S. | Professional Association Committee | 10/2008--present. ITSS Award Selection Committee for IEEE ITSS Best Practice Award for Engineers. |
| Chawathe, Sudarshan S. | Editorship | Associate Editor, IEEE Transactions on Intelligent Transportation Systems. |
| Chawathe, Sudarshan S. | Conference Chair/Co-Chair | Finance Chair, IEEE Intelligent Vehicles Symposium 2011. |
| Chawathe, Sudarshan S. | Program Committee Member | IEEE International Conference on Intelligence and Security Informatics. Vancouver, BC. May 2010. |
| Chawathe, Sudarshan S. | Program Committee Member | The 2010 ACM SIGMOD/PODS Conference: Indianapolis, Indiana. Demonstrations Program Committee. June 2010. |
| Denton, George | Advisory Board | Comer Science and Educational Foundation Climate Program |
| Denton, George | Roundtable Member | Member of the Comer Panel on Abrupt Climate Change |
| Denton, George | Editorial Board | Geografiska Annaler |
| Denton, George | Grant Review Board Member | Reviewed grants for the National Science Foundation and the Comer Science and Education Foundation |
| Fernandez, Ivan | Professional Association Committee | Nyle C. Brady Frontiers of Soil Science Lectureship Committee (S711.16), Soil Science Society of America (2010 – 2011) |
| Hall, Brenda | General/Other | U.S. Representative to the Scientific Committee on Antarctic Research, chosen by the Polar Research Board of the National Academy of Sciences. SCAR is an international body tasked by governments to develop a coordinated scientific plan for Antarctica |
| Hall, Brenda | General/Other | Review of ~20 papers per year for leading journals. |
| Hall, Brenda | General/Other | Review of ~15 proposals per year for the National Science Foundation |
| Hall, Brenda | General/Other | Mentoring of new Antarctic researcher |
| Hamilton, Gordon | Editorship | Journal of Geophysical Research |
| Hamilton, Gordon | Advisory Board | NASA Operation IceBridge Science Working Group |
| Hamilton, Gordon | Grant Review Board Member | NASA Interdisciplinary Science (Sea Level Rise) panel |
| Hamilton, Gordon | Advisory Board | NSF WISSARD science advisory board |
| Hooke, Roger | Translation/Interpretation | Extensively revised English language in manuscript, "Properties and periglacial processes in alpine meadow soils, western Nyainqentanglha Mountains, Tibet by Wang Liqiang and Yi Chaolu |
| Kelley, Alice | Program Committee Member | Planning for New England Inter-Collegiate Geological Conference, October 1-3, 2011 |
| Kelley, Joseph | Editorial Board | Associate Editor, Journal of Coastal Research |
| Kelley, Joseph | Advisory Board | Hudson Museum |
| Kelley, Joseph | Advisory Board | Research Fellow, Program for the Study of Developed Shorelines Western Carolina University, 2010-present |
| Koons, Peter | Grant Review Board Member | Reviewer for NSF proposals to programs in Continental Dynamics, Geophysics, Tectonics, Land Dynamics |
| Koons, Peter | General/Other | Reviewer/Associate Editor: for Earth and Planetary Sciences Letters, GEOLOGY, Journal of Geophysical Research, TECTONICS |
| Kreutz, Karl | Advisory Board | Senior advisory board member, Ice Drilling Program Office |
| Kreutz, Karl | Panel Chair | Chair, U.S. Ice Core Working Group |



| | | |
|------------------|------------------------------------|---|
| Mayewski, Paul | General/Other | Leader - ITASE (International Trans Antarctic Scientific Expedition) |
| Mayewski, Paul | General/Other | Leader - CASA (Climate of South America and the Antarctic) |
| Mayewski, Paul | General/Other | US Representative - Climate of the Magalanes Region South America |
| Norton, Stephen | Conference Chair/Co-Chair | BIOGEOMON2012 - International conference to be held in 2012 in Northport, Maine. Co-organizer with Professor Ivan Fernandez |
| Norton, Stephen | Editorial Board | Environmental Monitoring and Assessment |
| Olsen, Brian | Advisory Board | Sinauer Publishing, "Life", 9th edition (2009-2010) |
| Sandweiss, Dan | Editorship | Founding Editor, Andean Past (Cornell Latin American Studies Program) |
| Sandweiss, Dan | Editorial Board | Editorial Board Member, Chungará Revista de Antropología Chilena |
| Sandweiss, Dan | Editorial Board | Editorial Board Member, Latin American Antiquity (published by the Society for American Archaeology) |
| Sandweiss, Dan | Professional Association Committee | Chair, Latin American Antiquity Editor Search Committee, Society for American Archaeology |
| Sandweiss, Dan | Conference Chair/Co-Chair | Special Advisor to the Board - Organizer of the First SAA Intercontinental Conference, Society for American Archaeology |
| Sandweiss, Dan | Professional Association Committee | Publications Committee, Society for American Archaeology |
| Sandweiss, Dan | Professional Association Committee | Committee on the Americas Advisory Council, Society for American Archaeology |
| Sandweiss, Dan | Advisory Board | R.S. Peabody Museum of Archaeology, Phillips Academy, Andover MA. |
| Sandweiss, Dan | General/Other | External Reviewer, University of South Florida Department of Anthropology |
| Sandweiss, Dan | General/Other | Tenure evaluation letter for Melissa Goodman-Elgar, Washington State University |
| Sandweiss, Dan | General/Other | Support letter for Scott M. Fitzpatrick for Alumni Association Outstanding Research Award, North Carolina State University |
| Sandweiss, Dan | General/Other | Letter of support for Calogero Santoro for Dumbarton Oaks (8 month) fellowship |
| Sandweiss, Dan | General/Other | I operate an Andean Studies email information distribution list. |
| Sandweiss, Dan | General/Other | Nominated as one of two candidates for President of the Society for American Archaeology (not elected). |
| Saros, Jasmine | Panelist | NSF Panelist, Fall 2009 Population and Community Ecology Panel. |
| Saros, Jasmine | Co-organizer | Co-organizer along with Dr. Ruben Sommaruga (University of Innsbruck-Austria) of a special session entitled "Alpine waters: are they still nice?" for the 2009 meeting of the American Society of Limnology and Oceanography, Nice, France. |
| Saros, Jasmine | Associate Editor | Associate Editor for <i>Hydrobiologia</i> , overseeing any papers dealing with paleolimnology. I handled approximately 20 papers this year. |
| Saros, Jasmine | Ad-hoc Reviewer | Ad-hoc reviewer for several journals and various NSF panels, as well as the UK's NERC. |
| Saros, Jasmine | Board Member | Elected Board Member of the International Society for Salt Lake Research, currently serving second term. |
| Zaro, Gregory D. | General/Other | Grant Proposal Reviewer, National Science Foundation |



To Department:

| Name | Description |
|--------------------------|---|
| Belknap, Daniel F. | Chair, Climate Change Institute Peer Review Committee Member, Earth Sciences Peer Review and Policy Advisory Committee |
| Chawathe, Sudarshan S. | Computer Science Department Committees, University of Maine. * Curriculum * Space & equip (chair) * Colloquium * Graduate * PAC * PEER * Faculty Recruiting (chair) * Stillman Scholarship Committee. |
| Denton, George | Member of Policy Advisory Committee of Climate Change Institute |
| Dieffenbacher-Krall, Ann | Serve as director of the Paleocology Research Laboratory. Building Manager for CCI portions of Sawyer building and emergency response coordinator for ice-core freezer. Co-leader, Annual Climate Change Institute field trip to Bryant Pond, September 2009. Conducted field demonstrations of lake coring technique and microscopic review of chironomid remains. |
| Fastook, James | Graduate, Peer |
| Fernandez, Ivan | Peer Committee Graduate Faculty Building Manager, Potato Storage Building |
| Hall, Brenda | Peer-review committee – Earth Sciences Graduate Committee – Earth Sciences Climate and Culture degree program committee – Earth Sciences Peer-review committee - Climate Change Institute Graduate Committee - Climate Change Institute Joint Peer-review committees for Anthropology/CCI and Biology/CCI |
| Hamilton, Gordon | Chair, ad hoc committee on website (Climate Change Institute) |
| Hooke, Roger | Taught one pro bono course and am a member of 4 graduate student thesis committees (without compensation). |
| Kelley, Alice | Undergraduate Coordinator - student advising |
| Kelley, Joseph | Chair of Department of Earth Sciences |
| Koons, Peter | Curriculum Committee Undergraduate Adviser Chair : Peer Committee |



| | |
|--------------------------|---|
| | Peer Committee: Climate Change Institute Policy Action Committee: Climate Change Institute |
| Kreutz, Karl | CCI graduate committee ERS undergraduate advisor ERS Strategic planning committee CCI Churchill Fund committee |
| Kurbatov, Andrei | Co-organizer for annual Climate Change Institute Harold W. Borns conference |
| Maasch, Kirk | Climate Change Institute Policy Advisory Committee Department of Earth Sciences Graduate Committee |
| Mayewski, Paul | Director, Climate Change Institute |
| Ocampo-Raeder, Constanza | Anthropology Department: I am actively engaged in the development of two new programs in the department (undergraduate degree in Climate Change and Culture and a doctoral program in Anthropology and Environmental Policy). I have also been involved in activities for prospective and incoming accepted students in representation of my department. Hudson Museum: As an Associate Curator, I collaborate actively with the Hudson Museum by designing activities aimed to connect course themes with museum resources. |
| Olsen, Brian | Curriculum Committee Member SBE Seminar Series Co-Coordinator Accepted Honors Students Day Presenter Accepted Students Day Presenter |
| Robinson, Brian S | Serves on Policy Advisory Committee to the Anthropology Department, and advisory to the Anthropology Club |
| Roscoe, Paul B. | Policy Advisory Committee Various activities and presentations in connection with the department's proposal to initiate a Ph.D. program in Anthropology and Environmental Policy Chaired Brian Robinson's tenure committee Sat on or chaired several peer-review committees. |
| Sandweiss, Dan | For Anthropology Department: Member, Peer Review Committee for Brian Robinson For Climate Change Institute: Co-chair, Churchill Exploration Fund Selection Committee Member, Policy Advisory Committee |
| Schauffler, Molly | Respond to inquiries about climate education and resources Connect CCI graduate students with science teachers |
| Sobolik, Kristin | Chair of Anthropology Associate Director of the Climate Change Institute Organize Climate Change Science Day Initiate and Develop undergraduate program in Climate Change and Culture with the Department of Earth Sciences Develop Ph.D. program in Anthropology and Environmental Policy |



Zaro, Gregory D. Graduate Coordinator, M.S. in Quaternary and Climate Studies, Climate Change Institute

To College:

| Name | Description |
|--------------------------|---|
| Belknap, Daniel F. | Not this year |
| Chai, Fei | Ecosystem Modeler Search Committee |
| Chawathe, Sudarshan S. | 2009-04--present. CLAS instructional technology committee 2009-01--present. CLAS Committee on Admissions, Advising, and Retention. 2010-01--present: CLAS committee on Digital Curation certificate program. 11/2005--present. Support for Science Students, University of Maine. Member, Faculty Advisory Board. Advising a residential education and support program for students studying science. 2/2007--5/2007. College of Liberal Arts and Sciences, University of Maine. Member, Chair Search Committee. 9/2006--present. College of Liberal Arts and Sciences, University of Maine Member, Faculty Awards Committee. 5/2010--present. Working with Charlsye Smith Diaz and Dylan Dyer of the English department to design and implement a Web-based grading and assessment application for their large courses. |
| Fernandez, Ivan | Maine Agricultural and Forest Experiment Station Research Council (2005-present) Member – NSFA Graduate Awards Selection Committee |
| Kelley, Alice | Undergraduate Coordinator - student recruiting |
| Koons, Peter | Curriculum Committee (stepped down 9/2009) |
| Kreutz, Karl | S3 advisory board SECRL advisory board Honors college lectures, Fall 2008 |
| Ocampo-Raeder, Constanza | Women Studies Program: I continue to participate in lecture series and as a guest lecturer for individual courses (ethics and ethnographic methods) offered in this program. |
| Olsen, Brian | Department of Wildlife Ecology Seminar Series – April 2010. “Habitat as Social Architect: How spatial variability could drive behavior, evolution, and management”. Panel Discussion Member on "Getting an Academic Job". - October 2009, College of Natural Sciences, Forestry, & Agriculture. |
| Schauffler, Molly | Promote STEM careers and STEM education through the Science program development at the Hutchinson Center. |



To University:

| Name | Description |
|--------------------------|---|
| Belknap, Daniel F. | Faculty Senate Chair, Faculty Senate University Environment Committee Faculty Senate Executive Committee Faculty Senate Academic Affairs Committee |
| Chai, Fei | Faculty Senate |
| Chawathe, Sudarshan S. | 9/2006–present. University Club, University of Maine; Member, Executive Committee; (Vice-president, 2008--2009; President 2009--2010) 9/2008--present. Volunteer for Maine Hello. |
| Fernandez, Ivan | University of Maine Research Council (2006-present) Chair: Faculty Subcommittee on Faculty Salary Incentives Program (2007- present) Search Committee, Grants and Contracts Specialist, ORSP University of Maine Representative to the National Park Service North Atlantic Cooperative Ecosystem Studies Unit (2005-present) Advisory Board: Environmental Chemistry Laboratory (2004-present) Ecology and Environmental Science Boyle Prize Selection Committee Presidential Outstanding Teaching Award Committee |
| Hall, Brenda | Faculty Research Grants Committee |
| Kelley, Alice | Undergraduate Coordinator - student recruiting |
| Kelley, Joseph | Hudson Museum Board of Advisors |
| Kreutz, Karl | Faculty Senate, elected member Center for Teaching Excellence New Faculty mentor program High Tech Equipment Committee |
| Maasch, Kirk | Member, Hudson Museum Advisory Board |
| Mayewski, Paul | Adjunct Curator, Hudson Museum |
| Ocampo-Raeder, Constanza | Honors College: In addition to being a member of the Honors Council I am actively involved in efforts to foster and promote undergraduate research through the creation of research grants and workshops. I serve in the Honor's College Thesis Research and Travel Grant as well as run a yearly ethics and ethnographic methods workshop for CUGR (Center for Undergraduate Research). |
| Olsen, Brian | UMaine Student Chapter of the Wildlife Society – March 2010. “What can I do with a degree in wildlife ecology?”. |
| Robinson, Brian S. | The MAPI Archaeological Field School represents a University outreach program. |
| Roscoe, Paul B. | Co-taught the Camden Conference course on the Afghanistan/Pakistan conflict. Although I will receive some payment for co-teaching this course, I did it as a service to the College and University, most certainly NOT for the remuneration (!) |
| Sandweiss, Dan | Chief Cooperating Curator, Hudson Museum Board of Cooperating Curators Chair. Provost's International Advisory Team |



Chair, Dean of Libraries Joyce Rumery Reappointment Review Committee
 Co-Chair, Cultural Affairs/Distinguished Lecture Series Committee
 Member, Academic Affairs Program Prioritization Committee (APPWG)
 Member, Native American Studies Programs Strategic Planning Committee
 Member, Provost's Tenure & Promotion Advisory Committee
 Member, University Research Council
 Member, President's Senior Staff
 Member, Provost's Executive Staff
 Member, Provosts Council
 Member, Collins Center for the Arts Advisory Board (ex officio)
 Member, Student Learning Outcomes Assessment (SLOA-I) Committee
 Member, Graduate Rate and Retention Improvement Committee (GRRIT)
 Member, Irving Chair Review Committee
 Member, Saunders Professorship Review Committee
 Member, Bird & Bird Professorship Review Committee
 Etc.

Saros, Jasmine

Chair, Search Committee for the Ecological Modeler faculty position that will be a joint position between the Sustainability Solutions Initiative and SBE. The committee includes faculty from SBE, SMS, WLE, and Forestry.
 Member, Graduate Admissions Committee for CCI.
 Member, Curriculum Committee in SBE in 2008-09, and Chair of sub-committee that successfully developed a new concentration in Ecology for the Biology B.S. Member.
 Search Committee for the Director & Associate Director of SBE.
 SBE seminar co-coordinator for 2008-09.
 Academic advisor for 20 SBE undergraduates.
 Organizer of the 2009 CCI field trip to Bryant Pond for 82 people (members & their families).
 Member of advisory committees for the following graduate students:
 UMaine: Sam Belknap (M.S., CCI); Mick Demi (M.S., EES); Margaret Guyette (Ph.D., WLE); Bjorn Lake (Ph.D., Civil Engineering); Quenton Tuckett (Ph.D., SBE); Regina Rancatti (Ph.D., SBE); Miami of Ohio: Kevin Rose (Ph.D., Zoology)

Sobolik, Kristin

University Research Council
 Strategic Plan Committee of URC
 Interdisciplinary Academic/Research Centers Committee of URC
 Presidential Outstanding Teaching Award Committee
 Hudson Museum Cooperating

Zaro, Gregory D.

Graduate Board Member



To State Legislature:

| Name | Description |
|------------------|---|
| Hamilton, Gordon | Two invited presentations at the US Senate. |

To State Government Agencies:

| Name | Description |
|--------------------|--|
| Belknap, Daniel F. | Gubernatorial Appointee to Reserve Management Authority of the Wells National Estuarine Research Reserve (since 1999, reappointed for 3 yrs in 2009), meets quarterly. |
| Fernandez, Ivan | Maine State Board of Certification for Geologists and Soil Scientists – Augusta, Maine (1992 to present) |
| Kelley, Joseph | Maine Geological Survey StateMap Advisory Board |

To General Public/Local Community:

| Name | Description |
|--------------------------|--|
| Dieffenbacher-Krall, Ann | Consulting editor for 2 chapters of book about history of Maine forests by Al White and Drew Barton. Host a community volunteer working in my lab. |
| Fernandez, Ivan | I continue to participate in, and represent the University in this activity, regarding the Maine Stakeholder Climate Change Adaptation Process. This follows on the Maine Climate Future assessment I co-led with George Jacobsoon. The Stakeholder Adaptation process is led by Maine DEP, with an initial report delivered to the Legislature in February, 2010. That process continues. Northeastern Association of Graduate Schools Dissertation Awards Committee |
| Hall, Brenda | Dozens of informal contacts with public per year, generally through email or visits to my office. Presentation to Dirigo Pines senior community |
| Hamilton, Gordon | Several invited presentations to non-specialist audiences on the general theme of climate change and sea level rise (Portland, ME; Hampton, NH; Philadelphia, PA; Washington, DC; Tampa, FL; Miami, FL). |
| Hooke, Roger | On June 13 I will be leading a field trip to study Deer Isle (Maine) geology for the Penobscot Mineral and Lapidary Club. Sharing of my knowledge of the landscape and the underlying geology with lay persons enhances their understanding of the environment, and hopefully informs their decisions about achieving a sustainable modus operandi in the face of an onslaught by those among us who would use our resources for present gain with no regard for future generations |
| Kelley, Joseph | Maine Audubon Society Penobscot Valley Chapter Board Member |



| | |
|--------------------------|---|
| Kreutz, Karl | Climate literature presentation, Asa Adams school Board of Trustees, Maine Audubon |
| Kurbatov, Andrei | Lecture in Mc Murdo base Antarctica |
| Mayewski, Paul | Extensive outreach |
| Ocampo-Raeder, Constanza | International Service Activities: In addition to service work in North America, I have also been involved in a series of activities in Peru. These activities, guest lectures, publications, and workshops, are part of my commitment to share and promote my findings with the people and countries I work with. I have run several workshops and conducted guest lectures in Peru. Most notably with Toronja Communications Enterprises and the Camaroneros Guild of Lunahuana. I also have a working relationship with the research organization Centro de Estudios Sociales Peruanos for pro bono consulting regarding sustainable development projects in Latin America. |
| Olsen, Brian | Orono Bog Boardwalk – May 2010. “The Sparrows of Orono Bog”. Bangor City Forest: Bangor, Maine. 72nd Annual Eastern Maine Sportsmen’s Show – March 2010. “As Climate Changes: Effects on Habitat, Fish, Wildlife, and Sportsmen”. Penobscot County Conservation Association: Orono, Maine. |
| Robinson, Brian S. | Board member of the Maluhsi-hikon Petroglyph Foundation Board of Trustees of the Wilson Museum, Castine, final year of two year term. |
| Roscoe, Paul B. | Delivered two lectures, The Origins of War, to the Darwin lecture series in Fall 2009 Delivered a lecture, The Origins of War, to the Senior College, Spring 2010 |
| Sandweiss, Dan | Board member, Bangor Foreign Policy Forum |
| Schauffler, Molly | Serve as Vice President of the Belfast Bay Watershed Coalition Serve as Secretary for the Josselyn Botanical Society |

To Pre-K - 12 Education

| Name | Description |
|--------------------------|--|
| Chawathe, Sudarshan S | 12/1999–present. Intel Science Talent Search Science Service. Judge 2000–present; evaluator 1999–2000. Judging the week-long Science Talent Institute and evaluating entries for the Science Service’s Intel Science Talent Search (formerly, the Westinghouse Competition). 10/2006–present. "Classbooks": A Web-based data management system for tracking student reading and outcomes, currently used in a 1st grade class at the Palmyra school, Maine, (MSAD 48). |
| Dieffenbacher-Krall, Ann | 6/23/09 Conducted laboratory tour and coring demonstration for twelve K-12 teachers. |
| Hall, Brenda | Presentations to elementary and middle school students in S.A.D. 64 (Corinth. Stetson. Bradford. Hudson. Kenduskeag) |



| | |
|--------------------|---|
| | Correspondence with elementary school students from Poland (ME). |
| Hamilton, Gordon | Three visits to K-12 schools in the area |
| Kelley, Joseph | Led Tour of Earth Sciences for 4 high school classes |
| Koons, Peter | Workshop development and presentation for IDEAS-ITEST project: Contribute/direct ~ 15 workshops /ear for ~ 20 teacher participants. |
| Kreutz, Karl | Stillwater River chemical sampling and analysis project, Asa Adams fourth grades classes Antarctica lectures, Stillwater Montessori School and Asa Adams School Research project, Sterns High School Expanding your Horizons workshop Electronic Emissary program NASA Climate Academy |
| Kurbatov, Andrei | Graduate student, Nicole Spaulding went three times to local area schools for public lectures. |
| Robinson, Brian S. | Science day. Eight presentations in one day. |
| Schauffler, Molly | Initiated STEM Collaborative for teachers Advisory Board for Maine Math Science Alliance Geniquest Project Letters of support and collaboration with teachers for funding requests Advisory Board for Island Institute STORMS Project (Elementary school weather monitoring) |

Service – Manuscripts/Proposal Reviewed

| Name | Manuscripts | Proposals | Description |
|--------------------------|--------------------|------------------|--|
| Belknap, Daniel F. | 2 | 1 | National Park Service, 2 manuscripts on paleontology of National Parks - Acadia and Boston area. |
| Chawathe, Sudarshan S. | 25 | 1 | [numbers are approximate... don't have all records handy; the manuscripts reviewed is almost certainly an underestimate.] |
| Denton, George | 8 | 10 | I reviewed manuscripts for geologic professional journals and proposals for the national Science foundation and for the Comer Science and Education Foundation. |
| Dieffenbacher-Krall, Ann | 2 | 0 | Reviewed two articles for journal "Hydrobiologia". |
| Fastook, James L. | 3 | 3 | papers reviewed for GRL: 1) Transoceanic Infragravity Waves Impacting Antarctic Ice-Shelves, Peter D. Bromirski, Olga V. Sergienko and Douglas R. MacAyeal 2) Modeled and Observed fast flow in the Greenland ice sheet, Ed Bueler, Constantine Khouliev, Andreas Aschwanden, Ian Joughin, Ben Smith 3) Ocean waves as a possible trigger of ice-shelf disintegration: Application to the break-up of Wilkins Ice Shelf (Antarctic Peninsula), Olga V. Sergienko proposal reviewed for NASA: |



| | | | |
|------------------|----|----|---|
| | | | <p>1) ProposalTitle:Finite element analysis of glacial flow on Mars with insights from SHARAD, M Searls proposals reviewed for NSF:</p> <p>1) An Antarctic climate estimator for driving long-term ice sheet simulations, D B Reusch</p> <p>2) Collaborative Research: Analysis of McCall Glacier ice core and related modern process studies, M Nolan</p> |
| Fernandez, Ivan | 16 | 5 | I periodically review manuscripts for a wide range of journals in natural and environmental sciences as well as proposals for the National Science Foundation, the US Department of Agriculture and the US Environmental Protection Agency. |
| Hall, Brenda | 20 | 15 | I regularly review papers from the leading journals in my field, as well as proposals, primarily from the National Science Foundation. |
| Hamilton, Gordon | 14 | 9 | Science (2); Geophysical Research Letters (4); Journal of Glaciology (3); Annals of Glaciology (2); Geophysical Journal International; Remote Sensing of the Environment; Hydrological Processes. |
| Hooke, Roger | 5 | 4 | <p>Manuscript reviews:</p> <p>1. The Sieve Lobe Paradigm: Observations of active deposition by Juan Pablo Milana published in Geology</p> <p>2. Dow, C.F., Kavanaugh, J.L., Sanders, J.W., Cuffey, K.M. and Macgregor, K.R., Subsurface hydrology of an overdeepened cirque glacier submitted to Journal of Glaciology</p> <p>3. Mavlyudov, B.R., Internal drainage of glaciers: Part i. The structure of glacier internal drainage systems glaciers submitted to Journal of Glaciology</p> <p>4. Rolstad, C., Chapuis, A., and Norland, R., Electromagnetic interference in ground-based radar data from Kronebreen calving front due to multipath scattering and variations in tide-water sea levels submitted to Journal of Glaciology</p> <p>5. Theakstone, W.H. and Mavlyudov, B.R., Exploration within and beneath glaciers (a comment on a paper by J. Gulley on englacial conduits in Matanuska Glacier submitted to Journal of Glaciology</p> <p>NSF Proposals</p> <p>1. EAR 0944554 Constitutive modeling, testing, and validation for the ice-till interface for soft-bedded ice (Desai, Carlson, and Jenson)</p> <p>2. OPP/ANT 0944191 Establishing the chronology and histories of accumulation and ice dynamics for the WAIS divide core (Taylor, Conway, Waddington)</p> <p>3. EAR 0944602 (Revised) Constitutive modeling, testing, and validation for the ice-till interface for soft-bedded ice (Desai, Carlson, and Jenson)</p> <p>Other proposals</p> <p>1. PROP-21109-ANT-UOO: Understanding ice shelf moraines (For New Zealand Foundation for Research, Science, and Technology)</p> |
| Kelley, Joseph | 3 | 2 | <p>Papers for Journal of Coastal Research (2)</p> <p>Geological Magazine</p> <p>Proposals for National Science Foundation, National Park Service</p> |
| Koons, Peter | 10 | 10 | <p>(Numbers above are conservative estimates: I do not record all reviews)</p> <p>As a member of NSF CD panel, I review the integrated science proposals, with multi institutional collaboration with an</p> |



average request/ proposal of ~\$3Ma. (number of proposals is approximate).
 I review ~ 5 proposals for NSF TECTONICS.

| | | | |
|--------------------------|----|----|---|
| Kreutz, Karl | 6 | 3 | Elsig et al., Nature Divine et al. Polar Research Kunasek et al. Journal of Geophysical Research Lupker et al. Earth and Planetary Science Letters Field et al. Geophysical Research Letters Black and McLennan, NSF Fortner et al. Hydrological Processes Albert and Baker, NSF Brook and Gupta, NSF |
| Kurbatov, Andrei | 1 | 0 | Manuscript ID: es-2009-02492n, Thallium as a tracer for pre-industrial volcanic eruptions in an ice core record from Illimani, Bolivia. Submitted to: Environmental Science & Technology |
| Meese, Debra | 4 | 6 | All proposals and manuscripts involved properties of ice. |
| Ocampo-Raeder, Constanza | 0 | 0 | I currently review papers for two journals: Human Ecology and The Journal of Ecotourism |
| Olsen, Brian | 2 | 0 | Reviewed paper for The Condor and The Southeastern Naturalist |
| Robinson, Brian S. | 1 | 0 | One manuscript reviewed for American Antiquity. |
| Sandweiss, Dan | 12 | 13 | Manuscripts reviewed: Latin American Antiquity - 3 Archaeological Prospection - 1 Current Anthropology - 1 Estudios Atacameños - 1 Journal of Archaeological Research - 1 Journal of Archaeological Science - 1 Journal of Coastal Conservation - 1 Journal of Field Archaeology - 1 Journal of Island & Coastal Archaeology - 1 Proceedings of the 2nd ICAZ Archaeomalacology Working group - 1 Proposals reviewed: American Philosophical Society Lewis & Clark Fund - 7 National Geographic Society - 3 Dumbarton Oaks Research Grant - 1 American Philosophical Society Franklin Research Grant - 1 National Endowment for the Humanities – 1 |
| Zaro, Gregory D. | 0 | 1 | Dissertation Improvement Grant, National Science Foundation: Proposal to analyze stylistic variation among Chiribaya ceramic museum collections originally excavated from discrete cemeteries in the Ilo Valley of southern Peru. |



Service – Television/Radio/Newspaper Interviews

| Name | Description |
|--------------------------|---|
| Chai, Fei | 2 |
| Hamilton, Gordon | CNN (http://edition.cnn.com/2009/TECH/science/09/20/greenland.arctic/index.html#cnnSTCVideo) Al Jazeera (http://english.aljazeera.net/news/europe/2009/09/200992881845153527.html) ITN TV (http://itn.co.uk/b0cac4d29c3dd02f476d89af247c1720.html) Australian Broadcasting Corporation (http://www.abc.net.au/am/content/2009/s2676363.htm) Liberation (http://www.liberation.fr/terre/0101592044-voyage-au-pays-des-glaciers-qui-gouttent) Also, Associated Press (Stockholm, Sweden), ZDF-tv (Germany), India Today tv. |
| Kelley, Alice | Bangor Daily News, Channel 7 News: Earthquake information following earthquakes in Haiti and Chile |
| Kelley, Joseph | Bangor Daily News, Associated Press, Nature Magazine |
| Koons, Peter | Interviewed by local media following Haiti and Chile earthquakes |
| Kreutz, Karl | Interview and story with Maine Campus newspaper Interviews with TV2 (WLBZ) and TV5 Bangor Denali footage featured in UMaine promotional TV spots |
| Mayewski, Paul | MPBN Chamberlain Series Punta Arenas and Santiago Chile Newspapers Bangor Daily News |
| Ocampo-Raeder, Constanza | UMaine TODAY magazine article (Spring 2010). http://www.umaine.edu/magazine/past-issues/spring-2010/reading-the-resources/ |

SPECIAL PUBLIC SERVICE RECOGNITION/AWARDS/HONORS RECEIVED

| Name | Description |
|----------------|---|
| Kelley, Joseph | Research Fellow, Program for the Study of Developed Shorelines, Western Carolina University, 2010-present |
| Mayewski, Paul | Seligman Crystal - Highest award of the International Glaciological Society, Cambridge, UK |



Olsen, Brian

NSFA Graduate Mentor of the Year

Other: (e.g. special contracts)

Name

Chawathe, Sudarshan S.

Hamilton, Gordon

Description

Numbers for manuscripts reviewed are my best estimates.

Op-ed in Bangor Daily News (March 4, 2010) on legislative threats to the Clean Air Act.