



Annual Report – FY2013

Research Activity for the period

July 1, 2012 to June 30, 2013





Annual Report - FY 2013

Research Activity for the period of July 1, 2012 to June 30, 2013

Table of Contents

Climate Change Institute – Introduction, Mission Statement, CCI Legacy	3
Expectation, Maintaining & Advancing Institute Research (2010-2015)	4
Examples of Climate Change Institute 2012-2013 Highlights	11
Examples of Institute Wide Challenges, Solutions and Goals for Next Year (FY2014)	12
Climate Change Institute – Organizational Chart	14
Climate Change Institute – Summary of Accomplishments	15
Research Grant Submissions Analysis – FY2013	15
Major Awards	16
Research Expeditions	16
Mentoring	16
Summary of Faculty Publications Totals	17
Full Roster of Climate Change Institute Faculty/Staff	18
Special Recognition/Awards/Honors received for research, scholarship, creativity	20
Publications: Abstracts/Books/Book Chapters/Journal Articles/Posters Proceedings/Technical Reports	21
Presentations: International/National/Regional/State/Local	43
Conferences/Symposia/Meetings Attended: International/National/Regional/State/Local	51

Research Expeditions and Field Trips	54
Other Indicators	56
Media Presentations Created	57
Service – To Profession	58
Service – To Department	61
Service – To College	64
Service – To University	64
Service – To University System	66
Service – To State Government Agencies	66
Service – To General Public/Local Community	66
Service – To Pre-K-12 Education	68
Service – Manuscripts/Proposal Reviewed	68
Service – Television/Radio/Newspaper Interviews	70
Special Public Service Recognition/Awards/Honors Received	71
Other (e.g. special contacts)	71
Harold W. Borns Symposium Mini Papers	72

Climate Change Institute – University of Maine

Introduction

During FY2013 CCI researchers: (1) undertook 46 expeditions throughout the world involving undergraduate and graduate students, (2) mentored 54 graduate students and supported almost all through research grants, (3) produced 238 publications, (4) gave 138 presentations to scientific and public audiences, (5) received 62 new research grants (including new, supplemental and continuation awards) for a total of \$16,678,640 with a success rate of 79.49%, and (6) realized a return on investment ranging from \$8.61 to \$21.07 per \$1 from EandG and MEIF for tenure track and research faculty, respectively.

CCI Mission Statement:

The Climate Change Institute is a global leader in research and graduate education that integrates transformational field, laboratory and modeling activities to understand the physical, chemical, biological and social components of the climate system of the past and present and to predict future changes in climate and their impacts at local to global scales.

CCI Legacy

Institute investigations span the last 2 million years, a time of numerous glacial/interglacial cycles and abrupt changes in climate. These investigations inform predictions for future climate change based upon an understanding of the full dynamic range of the natural climate system and the evolving dramatic influence of human activity. CCI has a legacy of major scientific contributions that include understanding the timing, causes, and mechanisms of natural and human forced climate change, and on the effects of climate changes on the physical, biological, chemical, ecological, social, and economic conditions of humans and the ecosystem.

CCI faculty have very strong interactions with academic units through joint appointments in: Departments of Anthropology, School of Biology and Ecology, Department of Civil and Environmental Engineering, School of Computing and Information Science, School of Earth and Climate Sciences, School of Marine Sciences, Department of Mechanical Engineering and School of Forest Resources. Institute research is supported by grants from a variety of sources including the National Science Foundation, the National Oceanic and Atmospheric Administration, the National Aeronautics and Space Administration, national Geographic Society, the W.M. Keck

Foundation, Bingham Trust, Comer Foundation, Dan and Betty Churchill Exploration Fund, Garrand Family, Heinz Endowments and others.

Over the past 4 decades, the Climate Change Institute, initially named the Institute for Quaternary Studies, has earned an international reputation, recognizing the unique climate perspective it provides. Institute researchers have contributed substantially to the understanding of past, present, and future climate change as demonstrated by the numerous high profile honors received by our faculty and students.

Expectation

The direction of the Climate Change Institute is vitally linked to the widely accepted realization that an understanding of climate change and its implications are absolutely critical to the future of society, ecosystems, economy, and governance. As a consequence the Climate Change Institute is and will continue to experience ever-broadening interaction with other disciplines, University of Maine research and academic units, and local, national and international partners. It will also be faced with rapidly emerging opportunities for application of its findings and expertise to critical issues such as: climate change-induced hazards (e.g., storms, floods, coastal erosion, drought, heat), adverse health threats (e.g., heat, moisture, disease, dust, storms), other economic and social challenges (e.g., water, energy, food security, military security and civil unrest, agriculture, urbanization), and climate change based decision-making by individuals, NGOs and governmental units. To meet these challenges and opportunities the Climate Change Institute has successfully competed for federal funds, but it also requires resource flexibility not typically available through federal agency programs that allows the Institute to continue to grow as a research catalyst within the University of Maine, and to explore and contribute to new innovations in the understanding and application of climate change research in local to global settings.

Maintaining and Advancing Institute Research (2010-2015)

The Climate Change Institute has a long tradition of multi- and inter-disciplinary research that can be divided into research themes. Following is a description of current Institute research themes (alphabetical order) and requirements needed to advance these themes over the next five years. The following information was developed through a process that included: a retreat for all members of the institute in 2010, iterations by Institute members through 2011, and updates through July 2013.

Archeology and Anthropology

Description: Humans have been an integral part of the climate system since hominids first emerged, 6.5 Million years ago. As humans spread out of Africa and throughout the rest of the world, they influenced local and global environmental change through control and use of fire, development of agriculture, domestication of animals,

and development of civilization. The cultural diversity seen in modern day social systems provides the framework for influencing not only our impact on climate change but also how we react and adapt to it. Successful decisions regarding climate change need to include the human component at all levels. The institute has focused research programs concerning human societies past and the present on issues surrounding human interaction with the environment in the Northeast, North and South America, and the Pacific Islands, as well as in zooarchaeology, taphonomy, and forensic anthropology.

Future needs and where relevant advances made this year: (1) Anthropologist/Archaeologist with particular interest in climate change impacts on past through modern societies to replace a recently departed faculty member; (2) Climate Change Policy Expert – research to incorporate an understanding of the importance of the human dimension in enacting successful climate change policy.

Atmospheric Climate Reconstruction and Glaciology

Description: The instrumental climate record extends back in time ~100 years in the Northern Hemisphere and is shorter and sparser in the Southern Hemisphere. Yet to understand natural climate variability and assess human impact on modern climate requires significantly longer records. Ice cores provide robust sub-annually resolved records of past temperature, precipitation, atmospheric circulation, sea ice extent, volcanism, biomass burning, chemistry of the atmosphere, and much more. The Climate Change Institute is a world leader in the recovery, analysis, modeling and interpretation of ice cores covering the last several hundred to hundreds of thousands of years. Our global array of ice cores includes records recovered from Antarctica, Greenland, Himalayas, Tibetan Plateau, Alaska/Yukon Territory, Iceland, Tierra del Fuego, Andes, and New Zealand. CCI researchers have a prominent record of leadership in several highly successful ice core programs including: Greenland Ice Sheet Project Two (GISP2, 25 US institutions), International Trans Antarctic Scientific Expedition (ITASE, 21 nations), Asian Ice Core Array (AICA, 2 nations), Climate of Antarctica and South America (CASA, 7 nations) and Polar Tropical Connections (PTC, 7 nations).

Future needs and where relevant advances made this year: 1) Upgrades to existing analytical equipment notably water isotope measurements (NSF grants pending and one accepted thus far), 2) additional tenure track faculty to conduct the ever-expanding array of field, laboratory innovation and interpretation related to this rapidly expanding field of research.

Climate Prediction and Modeling

Description: Institute modeling activities focus on physical, chemical, biological and human phenomena influenced by climate at multiple time and space scales. Our ability to expand observations of coupled dynamic systems that collectively constitute past, present and future global climate depends on numerical modeling of the global phenomena at local scales. We have developed and acquired a computational framework for 3D time-dependent modeling of the silicate earth, cryosphere and oceans at multiple time and space scale that are coupled to the changing climate via global and

mesoscale circulation models. We seek to identify and investigate the non-linear interactions among the physical, chemical, biological and human components of the climate system with the goal of prediction of climate change at centennial and decadal scales.

Future needs: Faculty position in Earth Systems modeling with concentration in one of the following: 1) Atmospheric Dynamics; 2) Coupled Human and Natural Dynamical Systems; 3) Coupled Modeling of Cryosphere, Atmosphere and Oceans. Post-doctoral Research Associates (being sought through federal grants) with concentrations in: 1) Ocean and Atmospheric Mesoscale Modeling and 2) Societal Response to Past and Future Climate Change. One Research Assistant bridging the Computation-Science-STEM aspects of Earth System modeling and visualization.

Climate Change Impacts, Policy and Sustainability

Description: Significant advances have been made in modeling future anthropogenic greenhouse gas emissions and human mitigation and adaptation responses, but these efforts can be improved in two ways. First, the cultural scope of their analytical frameworks needs to be expanded beyond an ecological-economic focus. Human behavior consists of social, political, and ideological (worldview) action in addition to ecological-economic behavior, and these realms have major implications for climate change responses. Cosmological views of climate and weather, for instance, affect such basic issues as whether people are willing to consider that climate can change, what agents they will consider responsible for such change (e.g., humans, deities), and the suite of responses they consider appropriate for mitigating and/or adapting to it. For another example: the political as well as the technological and economic structures of human communities affect their capacity to mitigate and adapt to climate change. The nation-states of the colonial and post-colonial world have quite different political structures and dynamics to those of First World nation-states, and these differences need to be incorporated in modeling global greenhouse gas emissions and devising mitigation and adaptation policies.

In addition to expanding the cultural scope of efforts to model climate-change futures and policies, the geocultural resolution of these models also needs improvement. The current resolution of IPCC models, for example, is the nation-state, aggregated into four blocs: the OECD90, Asia, REF, and ALM. But nation-states embrace multiple sub-cultures with varying levels of agency at the national level. Future models will need a finer cross-cultural resolution in addition to an expansion of the realms of human behavior they incorporate.

Future needs and where relevant advances made this year: 1) Tenure-track faculty member specializing in the anthropological dimensions of climate-change to be housed in the new PhD in Anthropology and Environmental Policy. 2) Modeling assistance. 3) Close association between CCI and University sustainability efforts is now even further strengthened through the hiring of a recent CCI PhD graduate as University Sustainability Officer.

Cyberinfrastructure

Description: Analysis of climate data collected by satellite, airborne, undersea and sub-soil surface platforms involves identification of periodic variations, backgrounds, and trends. Unfortunately the threshold of climate variability is not always captured during the limited time that instrumental measurements have been available. How rapidly can the climate system change? What is the impact of these changes on sea level, global temperatures, and food security? The volume and variety of data available to climate scientists to help answer these and similar questions have grown dramatically in the past few decades. This growth, fueled by technological advances in instrumentation and increased exploration, holds the potential to significantly increase the rate of scientific discovery and understanding. However, this potential is frequently difficult or impossible to realize due to the challenges faced by scientists in integrating, analyzing, visualizing, and, in general, managing the vast and diverse datasets. Tools and techniques that were adequate in the recent past (often a collection of spreadsheets and scripts in various formats and languages) are no longer able to cope with the increased volume and diversity of data. This difficulty in managing data leads to several related problems: 1) Scientists, who are often not experts in data management, often spend an inordinate amount of time and effort on data management tasks. 2) The rate at which data can be analyzed and used in support of scientific discovery is limited by the difficulties in processing. 3) Potential scientific breakthroughs that are discernible only after careful integration, analysis, and interactive exploration of large, diverse datasets (and qualitatively different from those derived from simpler, smaller datasets) are at present practically unrealizable. The primary goal of the cyberinfrastructure team at CCI is to develop methods to solve the above data management and related computing problems, making it easier for climate scientists to use the growing data resources, yielding scientific breakthroughs.

Future needs and where relevant advances made this year: 1) Tenure-track faculty with focus on scientific data management and related cyberinfrastructure; 2) Systems staff and/or tenure track faculty with expertise in software cyberinfrastructure for climate and related data to manage and teach students how to use freely available Climate models and GIS tools <http://freegis.org/NCL> and R in addition to p301 dx; 3) Upgrades to existing server and networking equipment and for ongoing software development and support (much of 3) is being sought through federal grants. One grant to date accepted.).

Ecosystems and Environmental Change

Description: Ecosystems and the ecosystem services (e.g., food security, fiber, renewable energy, clean water, recreation, habitat, carbon sequestration) they provide are the foundation of our society and economy, and provide critical feedbacks to the climate system (e.g., GHGs, albedo). Research in the Institute has focused on the effects of both chemical and physical changes in our environment on ecosystem function. This research encompasses issues such as acid deposition, reactive nitrogen, biodiversity, eutrophication, mercury and heavy metals, as well as changing temperature and moisture regimes on both short-term (weather) and long-term (climate) timescales. A key component of this research has been long-term calibrated watershed

studies that serve as ecological observatories of change, providing insights into climate change effects not possible with short-term experiments. This area of research is fundamental to effective climate change adaptation programs with direct linkages to policy and management decision-making.

Future needs: Contemporary ecosystem ecology and climate change adaptation are relatively new areas of emerging emphasis in the Institute. As such, needs include: 1) growth in linkages with other University faculty doing relevant research not yet part of the Institute (several new cooperating faculty members joined the Institute over the past year as a consequence of this need), 2) playing a leadership role in developing University and Institute strengths in ecosystem sciences and climate change, and 3) prioritizing faculty hires to move this framework to an implementation phase.

Glacial Geology and Climate Reconstructions

Description: Glaciers are sensitive recorders of past climate and are useful for reconstructing past temperature and precipitation changes. The Glacial Geology research group has a field-based program that focuses on using glacial geology and geochronology to understand large-scale climate and glaciological problems, such as: 1) the origin of ice ages, 2) the cause of ice-age terminations, 3) the origin of abrupt climate change, and 4) the stability of ice sheets. Our research group has ongoing projects in Antarctica, Greenland, New Zealand, Patagonia, Peru, Maine, and the western United States.

Future needs: 1) Tenure-track faculty member who combines field-based mapping with state-of-the-art cosmogenic exposure-age techniques.

Glaciology

Description: Ice sheets and glaciers are a significant component of Earth's climate system, and they play a major role in modulating global sea levels. Glaciological research in the Institute includes observational and modeling programs that focus on examining the dynamics and characteristics of modern ice sheets and outlet glaciers in Greenland and Antarctica as well as understanding past and future ice-sheet behavior. Recent institute work has highlighted the complex interaction between ice sheets and the ocean, and shown that ice sheets will potentially lead to a rapid rise in sea level during the 21st century.

Future needs and where relevant advances made this year: 1) Postdoctoral research associate in quantitative satellite remote sensing and data modeling (being sought through federal funding); 2) additional tenure-track faculty in glacier dynamics to position the institute to fully exploit numerous funding opportunities in cryospheric research, 3) expanded and improved facilities for this emerging group will be underway summer 2013.

Marine Geology

Description: The response of shorelines and the people who inhabit them to rising sea level and associated coastal processes is the major research focus of the Marine Geology group. Sea-level change over the past 20,000 years has been studied intensively from locations above and below the present shoreline, through mapping of the seafloor as well as lake bottoms. This research is used to influence state and national policies on coastal hazards and construction.

Future needs: 1) isotope/geochemist to interpret sediment record in cores in terms of climate change and human activities; 2) terrestrial lidar device to support existing projects and future proposals.

Paleoecology and Paleolimnology

Description: Paleoecology focuses on the use of preserved fossil and chemical signatures in lake sediments to reconstruct past terrestrial and freshwater environments. Research at the Institute includes the use of chironomid and diatom fossils to reconstruct climate, acidification, and eutrophication. The use of paleoecological records to understand the effects of climate change on terrestrial and aquatic biota is also a component of research in this theme.

Future needs: CCI has a recognized strength in paleoecological research, but with the retirement of paleoecology faculty, this cluster has shrunk to a single faculty member. The key advancement requirement in this area is a tenure-track terrestrial paleoecologist (a joint CCI-SBE search resulted in the successful hire of a new Assistant Professor who will join the University Fall, 2013). Faculty in this research cluster will also work toward funding postdoctoral associates to strengthen and expand this research cluster.

Renewable Energy and Environmental Monitoring

Description: An emerging need is the prediction of local climate change based on high-resolution data. The data must be of a quality and resolution that is suitable for input into fine grid regional climate models. At the same time that modeling of local impact of climate change is developing, plans for both mitigation and local actions can be developed. The future focus includes potential local changes to the human impact on climate through conservation and the deployment of renewable energy. Understanding energy usage and carbon production on a local scale can lead to the prioritizing of investment toward the most cost effective reduction of carbon equivalent emissions.

Future needs and where relevant advances made this year: 1) A network of flexible energy usage, climate monitoring and resource evaluation data nodes. 2) Expanded research capabilities in the meso-scale modeling of climate are required with a new faculty member in either the sciences or engineering. 3) Close association between CCI and University sustainability efforts is now even further strengthened through the hiring of a recent CCI PhD graduate as University Sustainability Officer.

Maintaining and Advancing Graduate Student Opportunities

Description: Graduate students working in the Institute register for PhD/MSc degrees in related UMaine academic units. New PhD programs are now available in the Department of Anthropology and the recently renamed School for Earth and Climate Sciences in Fall 2012). The Climate Change Institute also offers a MS degree program in Quaternary and Climate Studies. An Interdisciplinary PhD degree is also available through the Graduate School.

Future needs and where relevant advances made this year: CCI has a long tradition of support for graduate students through federal, foundation and private support. Continue to expand support opportunities for graduate student stipends and logistics support through federal, foundation, state and private avenues. This year was the first of five years of an NSF IGERT program entitled: Adaptation to Abrupt Climate Change (A2C2). A2C2 houses eleven graduate students in a dedicated office in the Sawyer Building.

Maintaining and Advancing Institute Infrastructure

Description: The Institute has a broad range of research facilities and equipment <http://climatechange.umaine.edu/about/facilities>. Recently CCI became a [WebEx](#) user. Cisco [WebEx](#) is a software and network solution that allows subscribed users to host small scale (up to 25 users) online videoconferences. Participants can meet online anytime, anywhere, using traditional telephone or voice, video and screen sharing (e.g., Power Point, Acrobat or Image Viewer) features of modern computer devices. Users require access to the Internet and a reasonably modern device (personal computer, iPhone, iPad, Android smartphones) capable of running Java software. CCI acquired a webcam with built in microphone equipment for two rooms (in the Sawyer and Bryand Buildings). CCI has a newly renovated computer and videoconferencing facility housed on Sawyer Building. We are adding better quality microphones, projector and TV. Video conferencing solutions are emerging rapidly and standards will probably change, so minor adjustments to the equipment and software solutions are expected in the future.

Maintaining and Advancing Institute Outreach

Description: The Institute maintains a wide range of outreach activities including: The Institute's website, an interactive web exhibit and discussion guide, "A Journey to Reedy Glacier" (<http://climatechange.umaine.edu/ReedyJourney>), Science Day (a day of K-12 class visits to CCI labs), professional development meetings and workshops for K-12 STEM teachers, public lectures, media interviews, and climate change documents and books/pamphlets written for the public (eg., *Maine's Climate Future*, *Maine's Ice Age Trail*, *The Ice Chronicles*, *Journey Into Climate*).

Future needs and where relevant advances made this year: One half-time to full-time position to (1) ensure climate-related professional development for STEM educators is aligned and synergistic with other STEM education efforts within the University and the State and Nation, (2) develop education and outreach goals and

generate funding for activities to meet those goals, (3) coordinate education and outreach activities within the Institute and document the impacts.

Examples of Climate Change Institute 2012-2013 Highlights

(1) **IGERT A2C2** - The University of Maine launched a new National Science Foundation sponsored Integrative Graduate Education and Research Traineeship (IGERT) – **the first of its kind to focus explicitly on adaptation to abrupt climate change**. This is a joint program between the [Climate Change Institute \(CCI\)](#) and the [School of Policy and International Affairs \(SPIA\)](#). For details see: <http://a2c2igert.umaine.edu/>

(2) **10Green** is an interactive tool that provides a comprehensive assessment of the health of your environment. 10Green leverages decades of ice core research that has allowed us to understand how the chemistry of Earth's atmosphere has changed as a consequence of human activities. For more details go to: <http://climatechange.umaine.edu/icecores/>. 10Green is a collaboration involving the [Climate Change Institute](#), the [School of Computing and Information Sciences](#), and [Garrand](#). Funding for 10Green was provided in part by The Heinz Endowments, The University of Maine, The National Science Foundation, Garrand, and the UMaine Development Office. For more details see: <http://www.10green.org/>

(3) **Climate Reanalyzer™** is a climate analysis and visualization tool developed by the [Climate Change Institute \(CCI\)](#) that allows public access to a broad range of instrumented climate data, current weather, forecast models and climate predictions for use by climate scientists and the public. For more details see: <http://cci-reanalyzer.org/>

(4) **W.M. Keck Laser Ice Facility** – The [Climate Change Institute \(CCI\)](#) revolutionized the field of ice core research and as a consequence potential for understanding past and predicting future changes in the rate, magnitude and timing of climate change events by developing laser sampling technology that transforms sampling resolution from a best resolution of 1 cm to 1×10^{-6} cm. This effectively means that ice core records can now be investigated down to extreme event level such as storms over timeframes of hundreds of thousands of years. This advance is the equivalent of discovering the atom for the climate science field.

(5) **40 Years of Excellence** – This year the [Climate Change Institute \(CCI\)](#) celebrates 40 years of “Discovery and Exploration” in the field of climate science through its unique combination of multi-disciplinary investigations into the physical, chemical, biological and social aspects of climate change, hundreds of student involved expeditions to the remotest reaches of the planet, leadership in high profile national and international climate science research programs, diverse outreach and education activities, service to the State of Maine, and state-of-the-art technology, modeling and cyberinfrastructure activities. For details see: <http://climatechange.umaine.edu/research/contribution-series>, <http://climatechange.umaine.edu/research/publications/climate-future>, <http://climatechange.umaine.edu/research/expeditions>, <http://climatechange.umaine.edu/insights/ice-core-perspectives>, <http://climatechange.umaine.edu/research/research-themes>, <http://climatechange.umaine.edu/research/hosted-research>, http://climatechange.umaine.edu/cci_videos

(6) CCI archaeologists produce climate records from proxies recovered from archaeological excavations, most often marine organisms in coastal sites. In Peru, where most CCI archaeologists work, these records fill gaps in paleoclimatic reconstructions due to the scarcity of high resolution natural archives in the immediate vicinity and have led to the initial recognition of Holocene change in ENSO frequency, for instance.

Examples of Institute Wide Challenges, Solutions and Goals for Next Year (FY 2014)

The newly funded Abrupt Climate Change IGERT - CCI and our partner SPIA (School for Policy and International Affairs) received a first of its kind IGERT related to abrupt climate change and an opportunity for CCI to advance climate science in the policy arena. As of Fall 2013 there will be 11 PhD students and an IGERT program manager and by Fall 2014 there will be at least 5-6 new PhD students. This program requires significant input from faculty associated with the IGERT, innovative use of existing space which is rapidly being outgrown by the student numbers, and many new opportunities in education and collaboration between University of Maine, NGOs, private organizations, and US and foreign agencies.

Space for staging CCI expedition equipment and logistics and new innovative activities – CCI mounts as many as 15-20 expeditions to remote parts of the world every year, but has no truly dedicated staging space. We currently use unfinished space in Bryand that would be far better suited to offices or conference facilities than storage, staging and construction space. This space will be refurbished during summer 2013 to house offices for existing faculty displaced from low quality facilities. Further CCI has been trying to develop space for construction of large pieces of equipment and for outreach activities.

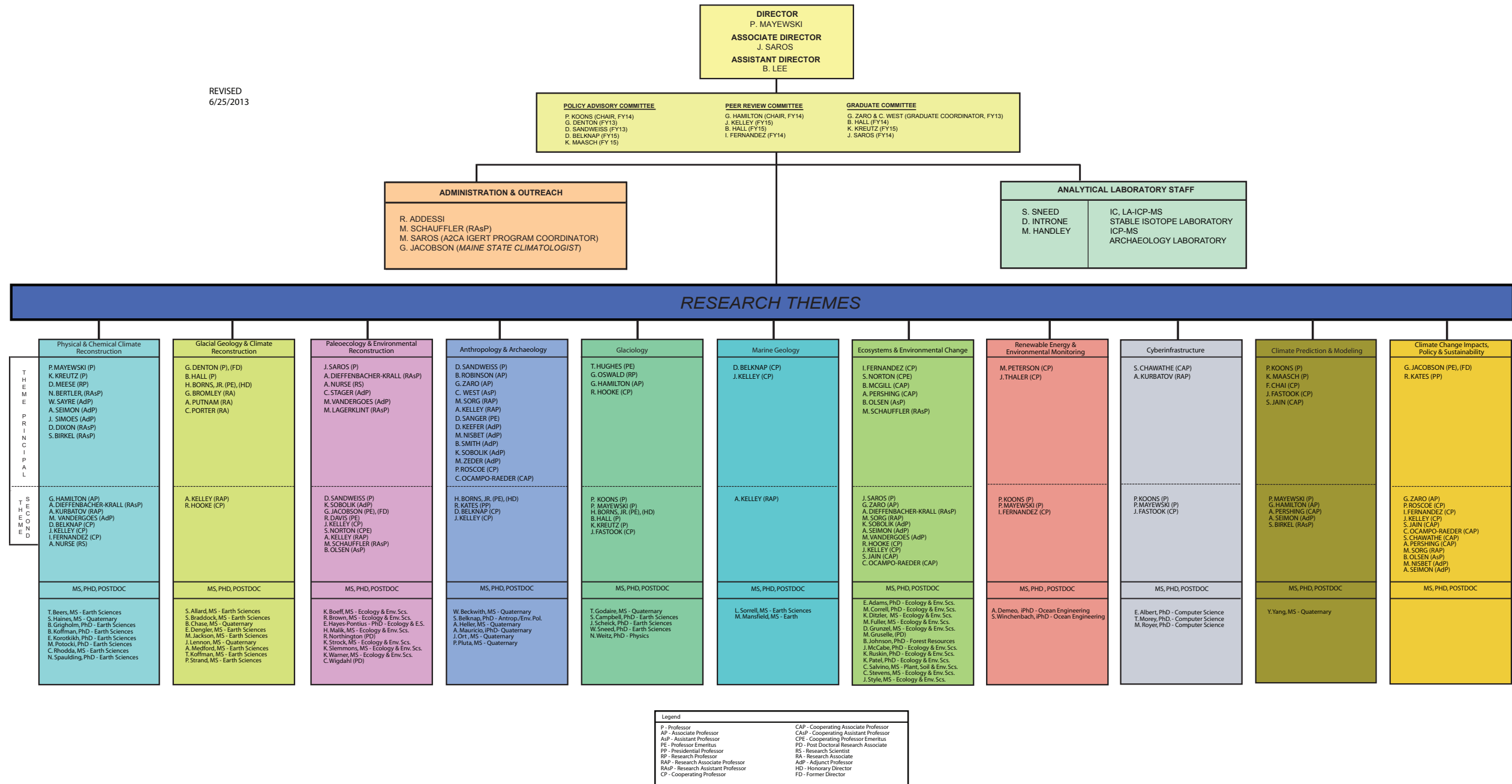
Tenure track positions in CCI related academic units - CCI is extremely supportive of the proposed and new undergraduate and graduate climate related degree programs in the School of Earth and Climate Sciences and Department of Anthropology. In fact CCI faculty comprise more than half of the newly named School of Earth and Climate Sciences as their tenure home. With the foregoing UM will have placed itself firmly and notably not only in climate science research through CCI but will also do so by offering through its academic partners undergraduate and graduate degree programs in climate science. CCI has supported graduate students and their research for 40 years and currently supports ~45 graduate students through its research programs. With the new IGERT these numbers will increase and more importantly so will opportunities for undergraduate and graduate students at UM. Climate science will be a major signature program for UM at all levels of education, research and service making the institution uniquely attractive to prospective students. Both the Department of Anthropology and the School of Earth and Climate Sciences will need increased faculty capacity as they evolve in the near future. CCI plans to partner in these positions and ideally to see

some of our well tested research faculty have the opportunity to compete for forthcoming tenure track positions continuing to leverage the CCI-academic unit faculty funding legacy and its success. Collaborations between CCI undergraduate and graduate students including the CCI-SPIA IGERT program, continuing strong associations with the School of Computing and Information Science and the School for Marine Sciences, emerging partnerships with the Department of Chemistry and with the relatively new Renewable Energy student programs emphasize the expanding role, UM's climate science and renewable energy engineering education and research holdings, and attractiveness to potential students.

Research Faculty - CCI proposal writing and proposal success capacity is currently at near maximum as indicated by our federal grant success rate, our rate of return on investment, and the number of our proposal submissions each year. Our chances for continuing this impressive record and doing even better will require more tenure track and research faculty. CCI research and UM would benefit greatly by the option to enlist several new research faculty. Current return on investment for research faculty is \$21.07 per \$1 of EandG and/or MEIF.

ORGANIZATIONAL CHART

REVISED
6/25/2013



Summary of Accomplishments (FY2013)

Research Grant Submissions FY2013

Research grant submissions for the Climate Change Institute totaled **\$42,041,044** for FY2013. This total reflects **111** submissions (includes new, supplemental, continuation, and pending submissions).

New Research Grant Awards – FY2013

New research grants (includes new, supplemental and continuation awards) awarded to the Climate Change Institute total **\$16,678,640** (62 grants).

Pending Research Grants – FY2013

Pending research grants for the Climate Change Institute total **\$12,922,993** (33 grants).

Declined/Withdrawn Research Grants – FY2013

Research grant declined for the Climate Change Institute totaled **\$12,439,411** (16 grants) during FY2013.

Percent Success Rate by all* CCI Grant Writers for Research Grant Submissions – FY2013

Climate Change Institute faculty and staff were **79.49% successful** in obtaining grant awards during FY2013.

* all refers to any CCI grant writer with or without CCI MEIF or CCI E&G support.

Funds via E&G and MEIF – FY2013

E&G funding for CCI salaries* (minus fringe) totals: \$651,321

E&G funding for CCI operating totals: \$16,780

MEIF funding for CCI salaries* (minus fringe) totals: \$466,961

MEIF funding for CCI operating totals: \$28,350

TOTAL E&G and MEIF FUNDING: **\$1,163,412**

*Note – The vast majority of these salaries support tenure track faculty who teach courses in academic departments.

Return on Investment (ROI) for CCI – E&G and MEIF

FY2012 Research Grants		FY2013 Research Grants	
<i>(includes only faculty supported by CCI E&G and CCI MEIF)</i>		<i>(includes only faculty supported by CCI E&G and CCI MEIF)</i>	
FY2012 Research Grants Total	\$11,777,888	FY2013 Research Grants Total	\$10,019,637
FY2012 E&G and MEIF Funding:	\$1,157,284	FY2013 E&G and MEIF Funding:	\$1,163,412
ROI = CCI return on investment is \$10.18 dollars per \$1 invested in CCI MEIF and CCI E&G		ROI = CCI return on investment is \$8.61 dollars per \$1 invested in CCI MEIF and CCI E&G	

The **average amount raised by each CCI grant writer** (13) supported by CCI MEIF and/or CCI E&G was **\$770,741** in FY2013.

ROI for each CCI Research Faculty (2) supported by CCI MEIF and/or CCI E&G is \$21.07.

One CCI Research Faculty is not supported by any CCI MEIF or CCI E&G funding and raised \$635,800.

Major Awards and Recognition:

Six major awards and recognitions (see page 20 of this report for details) were given to CCI faculty this year; maintaining CCI's high national and international standard of excellence.

Research Expeditions:

CCI takes great pride in its international reputation for research expeditions. All CCI graduate students are involved in at least one research expedition, many several, during their graduate career. Students provide daily logs as part of CCI's outreach. CCI undertook 46 expeditions this past year for details: <http://www.climatechange.umaine.edu/research/expeditions>

Mentoring

A total of 54 graduate students are associated with the Institute, 22 are PhD students; 32 are MS students.

Summary of Faculty Publications – FY2013

PUBLICATION TYPE	FY2013	FY 2012	FY 2011
Publications/Abstracts/Books/Book Chapters/Journal Articles/Posters/Proceedings/Technical Reports	271	213	238
Presentations: International/National/Regional/State Local	153	138	138

FULL ROSTER OF CLIMATE CHANGE INSTITUTE FACULTY/STAFF

Last Name	First Name	Position in Research Unit	Home (Institute/Academic Department)
Addessi	Rebecca	Accounting Support Specialist	Climate Change Institute
Belknap	Daniel	Cooperating Professor	School of Earth & Climate Sciences/Climate Change Institute
Bertler	Nancy	Adjunct Assistant Professor	Climate Change Institute
Birkel	Sean	Research Assistant Professor	Climate Change Institute
Borns	Harold	Professor Emeritus	School of Earth & Climate Sciences /Climate Change Institute
Bromley	Gordon	Post-doctoral Research Associate	Climate Change Institute
Chai	Fei	Cooperating Professor	School of Marine Sciences/Climate Change Institute
Chawathe	Sudarshan	Cooperating Associate Professor	School of Computing & Information Science/Climate Change Institute
Davis	Ronald	Professor Emeritus	School of Biology & Ecology/Climate Change Institute
Denton	George	Professor	School of Earth & Climate Sciences/Climate Change Institute
Dieffenbacher-Krall	Ann	Research Assistant Professor	Climate Change Institute
Dixon	Daniel	Research Assistant Professor	Climate Change Institute
Fastook	James	Cooperating Professor	School of Computing & Information Science/Climate Change Institute
Fernandez	Ivan	Cooperating Professor	School of Forest Resources/Climate Change Institute
Gill	Jacquelyn	Assistant Professor	Climate Change Institute/School of Biology & Ecology
Hall	Brenda	Professor	Climate Change Institute/School of Earth & Climate Sciences
Hamilton	Gordon	Associate Professor	Climate Change Institute/School of Earth & Climate Sciences
Handley	Michael	Laboratory Manager	Climate Change Institute
Hooke	Roger	Cooperating Research Professor	Climate Change Institute/School of Earth & Climate Sciences
Hughes	Terence	Professor Emeritus	Climate Change Institute/School of Earth & Climate Sciences
Introne	Douglas	Stable Isotope Technician	Climate Change Institute
Jacobson	George	Professor Emeritus	School of Biology & Ecology/Climate Change Institute
Jain	Shaleen	Cooperating Associate Professor	Civil & Environmental Engineering/Climate Change Institute
Kates	Robert	Presidential Professor Sustainability Science	Mitchell Center/Climate Change Institute
Keefer	David	Adjunct Professor	Climate Change Institute
Kelley	Alice	Research Associate Professor	School of Earth & Climate Sciences/Climate Change Institute
Kelley	Joseph	Cooperating Professor	School of Earth & Climate Sciences/Climate Change Institute
Koons	Peter	Professor	School of Earth & Climate Sciences/Climate Change Institute
Kreutz	Karl	Professor	Climate Change Institute/School of Earth & Climate Sciences

FULL ROSTER OF CLIMATE CHANGE INSTITUTE FACULTY/STAFF - continued

Last Name	First Name	Position in Research Unit	Home (Institute/Academic Department)
Kurbatov	Andrei	Research Associate Professor	Climate Change Institute
Lagerklint	Ingrid	Research Assistant Professor	Climate Change Institute
Lee	Betty	Assistant Director	Climate Change Institute
Maasch	Kirk	Professor	Climate Change Institute/School of Earth & Climate Sciences
Mayewski	Paul	Director/Professor	Climate Change Institute/School of Earth & Climate Sciences
McGill	Brian	Cooperating Associate Professor	Climate Change Institute/School of Biology & Ecology
Meese	Debra	Research Professor	Climate Change Institute
Nisbet	Matthew	Adjunct Associate Professor	Climate Change Institute
Northington	Robert	Post-doctoral Research Associate	Climate Change Institute
Norton	Stephen	Cooperating Professor Emeritus	School of Earth & Climate Sciences/Climate Change Institute
Nurse	Andrea	Research Scientist	Climate Change Institute
Ocampo-Raeder	Constanza	Cooperating Assistant Professor	Anthropology/Climate Change Institute
Olsen	Brian	Assistant Professor	School of Biology & Ecology/Climate Change Institute
Oswald	Gordon	Research Professor	Climate Change Institute
Pershing	Andrew	Cooperating Associate Professor	School of Marine Science/Climate Change Institute
Peterson	Michael	Cooperating Professor	Dept. of Mechanical Engineering/Climate Change Institute
Porter	Charles	Research Associate	Climate Change Institute
Putnam	Aaron	Research Associate	Climate Change Institute
Robinson	Brian	Associate Professor	Anthropology/Climate Change Institute
Roscoe	Paul	Cooperating Professor	Anthropology/Climate Change Institute
Sandweiss	Daniel	Professor, Dean of Graduate School	Dean & Provost for Graduate Studies – Anthropology/Climate Change Institute
Sanger	David	Professor Emeritus	Anthropology/Climate Change Institute
Saros	Misa	A2C2 IGERT Program Coordinator	Climate Change Institute
Saros	Jasmine	Associate Director, Professor	Climate Change Institute, School of Biology & Ecology
Sayre	W.S.	Adjunct Professor	Climate Change Institute
Schauffler	Molly	Research Assistant Professor	Climate Change Institute
Seimon	Anton	Adjunct Assistant Professor	Climate Change Institute
Simoes	Jefferson	Adjunct Professor	Climate Change Institute
Smith	Bruce	Adjunct Professor	Climate Change Institute
Sneed	Sharon	Laboratory Coordinator	Climate Change Institute
Sobolik	Kristin	Adjunct Professor	Climate Change Institute
Sorg	Marcella	Research Associate Professor	Climate Change Institute Anthropology/Margaret Chase Smith Policy Center
Stager	J. Curt	Adjunct Professor	Climate Change Institute
Thaler	Jeffrey	Visiting Professor	Climate Change Institute
Vandergoes	Marcus	Adjunct Assistant Professor	Climate Change Institute
West	Catherine	Assistant Professor	Anthropology/Climate Change Institute
Wigdahl	Courtney	Post-doctoral Research Associate	Climate Change Institute
Zaro	Gregory	Associate Professor	Anthropology/Climate Change Institute
Zeder	Melinda	Adjunct Professor	Climate Change Institute

RESEARCH, SCHOLARSHIP, & CREATIVITY

Special Recognitions/Awards/Honors Received for Research, Scholarship, Creativity

Kelley, Joseph	Invited speaker to Royal Geographic Society (UK) and to a Penrose/Chapman conference, the biggest technical conference in the field of Geology.
Mayewski, Paul	Honorary Member of the American Polar Society bestowed at the 75th APS Anniversary Lambert Fellow, Deerfield Academy, Deerfield Massachusetts
Olsen, Brian	I became an "Elective Member" of the American Ornithologists' Union in August, by a vote of the society's council.
Sorg, Marcella	Have been invited to serve as Distinguished Scientist consultant to review cases for the U.S. Joint Prisoner of War and Missing in Action Accounting Command. This appointment will be ongoing and will involve reviewing cases in which their lab has identified individual military service members who have died in the line of duty.
Zaro, Gregory D.	Elected president of the UMaine chapter (Chapter 1) of Phi Kappa Phi National Honors Society

PUBLICATIONS: ABSTRACTS/BOOKS/BOOK CHAPTERS/JOURNAL ARTICLES/POSTERS/PROCEEDINGS/TECHNICAL REPORTS

Name	Type	Status	Citation	Refereed	Category	GS	US
Belknap, Daniel F.	Journal Article	Published	Brothers, L.L., Kelley, J.T., Belknap, D.F., Barnhardt, W.A., Andrews, B.D., Legere, C. and Clarke, J.H., 2012, Shallow stratigraphic control on pockmark distribution in north-temperate estuaries: Marine Geology, v. 329-331, p. 34-45. [Impact Factor 2.98] [http://dx.doi.org/10.1016/j.margeo.2012.09.006]	Yes	Basic	0	0
Belknap, Daniel F.	Journal Article	Published	Kelley, J.T., Belknap, D.F., Kelley, A.R. and Claesson, S.H., 2013, A model for drowned terrestrial habitats with associated archeological remains in the northwestern Gulf of Maine, USA: Marine Geology, v. 338, p. 1-16. [http://dx.doi.org/10.1016/j.margeo.2012.10.016] [http://dx.doi.org/10.1016/j.margeo.2012.10.016]	Yes	Basic	0	0
Belknap, Daniel F.	Abstract	Published	Belknap, D.F., 2012, Coastal marshes and shorelines, BIOGEOMON Conference, July, 2012, Northport, ME.		Basic	0	0
Belknap, Daniel F.	Abstract	Published	Cooper, J.A., Kelley, J.T., Belknap, D.F., Jackson, D.W., Quinn, R., Plets, R., Edwards, R., Long, A.J., Long, D., and Monteys, X., 2012, Submerged shorelines in the Irish Sea: spatial variability in form and preservation: Geological Society of America Abstracts with Programs, v. 44, no. 7 (Annual Meeting), Abstract 186-4, p. 449.	Yes	Basic	0	0
Belknap, Daniel F.	Abstract	Published	Kelley, A.R., Sandweiss, D.H., Kelley, J.T., Belknap, D.F. and Mauricio-Llonto, A.C., 2012, Ground-penetrating radar identification and characterization of an early monumental structure, north coast, Peru: Geological Society of America Abstracts with Programs, v. 44, no. 7 (Annual Meeting), Abstract 239-17, p. 567-568.	Yes	Basic	1	0
Belknap, Daniel F.	Abstract	Published	Kelley, J.T., and Belknap, D.F., 2012, Spatial and bathymetric controls on drowned shorelines in the western Gulf of Maine: Geological Society of America Abstracts with Programs, v. 44, no. 7 (Annual Meeting), Abstract 186-3, p. 449.	Yes	Basic	0	0
Belknap, Daniel F.	Abstract	Published	Mansfield, M.E., Belknap, D.F. and Kelley, J.T., 2012, The critical leading edge of Gulf of Maine salt marshes – interface with freshwater wetlands: Geological Society of America Abstracts with Programs, v. 44, no. 7 (Annual Meeting), Abstract 66-2, p. 181-182.	Yes	Basic	1	0
Belknap, Daniel F.	Abstract	Published	Wilson, K., Kelley, J.T., Reeve, A.S. and Belknap, D.F., 2012, Morphological controls on Maine’s salt marshes: dynamic salt marsh pools, groundwater, and sea-level rise: Geological Society of America Abstracts with Programs, v. 44, no. 7 (Annual Meeting), Abstract 66-1, p. 181.	Yes	Basic	0	0
Belknap, Daniel F.	Abstract	Published	Belknap, D.F., Kelley, J.T., Wilson, K., and Mansfield, M.E., 2013, Basal peats and the critical leading edge of Holocene transgression: Geological Society of America Abstracts with Programs, v. 45, no. 1 (NE Section Meeting), Abstract 67-7, p. 125.	Yes	Basic	1	0
Belknap, Daniel F.	Abstract	Published	Jacobacci, K.E., Belknap, D.F., and Kelley, J.T., 2013, Salt pools drive surficial transformations of Maine salt marshes: Geological Society of America Abstracts with Programs, v. 45, no. 1 (NE Section Meeting), Abstract 67-6, p. 125.	Yes	Basic	1	0
Belknap, Daniel F.	Abstract	Published	Wilson, K., Kelley, J.T., and Belknap, D.F., 2013, Salt pools drive surficial transformations of Maine salt marshes: Geological Society of America Abstracts with Programs, v. 45, no. 1 (NE	Yes	Basic	0	0

			Section Meeting), Abstract 17-2, p. 65-66.					
Belknap, Daniel F.	Abstract	Accepted	Wilson, K., Kelley, J.T., Tanner, B. and Belknap, D.F., 2013, Finger-printing salt pools in the stratigraphic record: implications for understanding morphological change in north-temperate salt marsh systems: Geological Society of America Abstracts with Programs, v. 45, no. 2 (SE Section Meeting), p. 75.	Yes	Basic	0	0	
Belknap, Daniel F.	Abstract	Published	Belknap, D.F., 2013, Salt marsh records of sea-level change in Maine: New England Estuarine Research Society (NERRS), Portland, ME, April 11, 2013, p. 15.		Basic	0	0	
Belknap, Daniel F.	Abstract	Published	Wilson, K.R., Kelley, J.T., Tanner, B.R. and Belknap, D.F., 2013, Maine's dynamic salt marshes: are re-interpretations of north-temperate salt marsh stratigraphic records warranted?: Joint Penrose/Chapman Conference, Geological Society of America and American Geophysical Union, Galveston, TX, April 14-19.	Yes	Basic	0	0	
Belknap, Daniel F.	Technical Report	Published	Belknap, D.F., 2013, Report on geophysical interpretations at the Castine Offshore Wind Test Site, February, 2013, to DeepCWind Consortium, UMaine, Orono, 19 pp.		Applied	0	0	
Chai, Fei	Journal Article	Published	Xu, Y., F. Chai, K. Rose, and F. Chavez (submitted): Environmental influences on the interannual variation and spatial distribution of Peruvian anchovy population dynamics from 1991 to 2007: a three-dimensional modeling study. Ecological Modeling. dx.doi.org/10.1016/j.ecolmodel2013.01.009.	Yes	Basic	1	0	
Chai, Fei	Journal Article	Published	Palacz, A.P. and F. Chai (2012): Spatial and temporal variability in nutrients and carbon uptake during 2004 and 2005 in the eastern equatorial Pacific Ocean. Biogeosciences, 9, 4369-4383.	Yes	Basic	1	0	
Chai, Fei	Journal Article	Published	Huff, D.D., S.T. Lindley, B.K. Wells, F. Chai (2012): Green Sturgeon Distribution in the Pacific Ocean Estimated from Modeled Oceanographic Features and Migration Behavior. PLoS ONE 7(9): e45852. doi:10.1371/journal.pone.0045852.	Yes	Basic	0	0	
Chai, Fei	Journal Article	Published	Xiu, P. and F. Chai (2012): Spatial and temporal variability in phytoplankton carbon, chlorophyll, and nitrogen in the North Pacific. Journal of Geophysical Research VOL. 117, C11023, doi:10.1029/2012JC008067.	Yes	Basic	0	0	
Chai, Fei	Journal Article	Published	Santora, J.A., W.J. Sydeman, M. Messié, F. Chai, Yi Chao, S.A. Thompson, B.K. Wells, F.P. Chavez (2013): Triple check: Observations verify structural realism of an ocean ecosystem model. Geophysical Research Letter. doi:10.1002/grl.50312.	Yes	Basic	0	0	
Chai, Fei	Journal Article	Published	Tang, Q.S., Z.D. Chen, K.F. Yu, M. Dai, M. Zhao, C. Ke, T. Wong, F. Chai, G. Wei, P. Zhou, L. Chen, J. Su, J. Barry, Y. Wu, K. Gao (2013); The effects of ocean acidification on marine organisms and ecosystem (in Chinese). Chinese Sci Bull (Chines Version), 2013, 58, doi: 10.1360/972010-1640	Yes	Basic	0	0	
Chai, Fei	Journal Article	Published	Gao, J. H. Xue, F. Chai, M. Shi (2013): Modeling the circulation in the Gulf of Tonkin, South China Sea. Ocean Dynamics. DOI: 10.1007/s10236-013-0630-4.	Yes	Basic	1	0	
Chai, Fei	Journal Article	Accepted	Nan F., H. Xue, F. Chai, D. Wang, F. Yu, M. Shi, G. Guo (in press): Weakening of the Kuroshio intrusion into the South China Sea over the past two decades. Journal of Climate, in press.	Yes	Basic	0	0	
Chai, Fei	Journal Article	Submitted	Wang, J., H. Hong, Y. Jiang, F. Chai (accepted with minor revision): Summer nitrogenous nutrient transport and its fate in the Taiwan Strait: a coupled physical-biological modeling	Yes	Basic	0	0	

			approach. Journal of Geophysical Research, in revision.					
Chai, Fei	Journal Article	Submitted	Xiu, P. and F. Chai (in revision): Connections between physical, optical and biogeochemical processes in the Pacific Ocean. Progress in Oceanography, in revision.	Yes	Basic	0	0	
Chai, Fei	Journal Article	Submitted	W. Ma, F. Chai, P. Xiu, H. Xue, J. Tian (resubmitted after revision): Modeling the seasonal and inter-annual phytoplankton dynamics in the South China Sea during 1958-2009. Journal of Oceanography, in review.	Yes	Basic	1	0	
Chai, Fei	Journal Article	Submitted	Xiu, P. F. Chai, A.C. Thomas (in review): Remote sensing of phytoplankton blooms induced by natural and artificial iron addition in the Gulf of Alaska. Remote Sensing of Environment, in review.	Yes	Basic	0	0	
Chawathe, Sudarshan S.	Book Chapter	Published	Erik Albert and Sudarshan S. Chawathe, A REST Framework for Dynamic Client Environments. In REST: From Research to Practice. 2011. Springer ISBN 978-1-4419-8302-2.	Yes		0	0	
Chawathe, Sudarshan S.	Proceedings	Published	Sudarshan S. Chawathe. Fast Fingerprinting for File-System Forensics. In Proceedings of the 12th annual IEEE Conference on Technologies for Homeland Security (HST). November 2012. Waltham, MA.	Yes		0	0	
Chawathe, Sudarshan S.	Proceedings	Submitted	Erik Albert and Sudarshan Chawathe. Deploying a Multi-Interface RESTful Application in the Cloud.			1	0	
Denton, George	Journal Article	Published	Putnam, A.E., Schaefer, J.M., Denton, G.H., Barrell, D.J.A., Birkel, S.D., Andersen, B.G., Kaplan, M.R., Finkel, R.C., Schwartz, R., Doughty, A. M., 2013, The Last Glacial Maximum at 44 S documented by a 10Be moraine chronology at Lake Ohau, Southern Alps of New Zealand. Quaternary Science Reviews 62, 114-141.	Yes	Basic	0	0	
Denton, George	Journal Article	Published	Putnam, A.E., Schaefer, J.M., Denton, G.H., Barrell, D.J.A., Finkel, R.C., Andersen, B.G., Schwartz, R., Chinn, T.J.H., and Doughty, A.M., 2012, Regional climate control of glaciers in New Zealand and Europe during the pre-industrial Holocene. Nature Geoscience 5, 627-630.	Yes	Basic	2	0	
Denton, George	Journal Article	Published	Birkel, S.D., Putnam, A.E., Denton, G.H., Koons, P.O., Fastook, J.L., Putnam, D.E., Maasch, K.A., 2012, Climate inferences from a glaciological reconstruction of the late Pleistocene Wind River ice cap, Wind River Range, Wyoming. Arctic, Antarctic, and Alpine Research 44, 265-276.	Yes	Basic	2	0	
Denton, George	Journal Article	Published	Hall, B.L., Porter, C.T., Denton, G.H., Lowell, T.V., and Bromley, G.R.M., 2013, Extensive recession of Cordillera Darwin glaciers during Heinrich Stadial 1. Quaternary Science Reviews 62, 49-55.	Yes	Basic	1	0	
Denton, George	Journal Article	Published	Hall, B.L., Denton, G.H., Stone, J.O., and Conway, H., 2013, History of the grounded ice sheet in the Ross Sea sector of Antarctica during the Last Glacial Maximum and the last termination. Geological Society of London, Special Publications, first published April 19, 2013; doi 10.1144/SP381.5.	Yes	Basic	0	0	
Denton, George	Journal Article	Accepted	Vandergoes, M.J., Hogg, A.G., Lowe, D.J., Newnham, R.M., Denton, G.H., Southon, J., Barrell, D.J.A., Wilson, C.J.N., McGlone, M.S., Allan, A.S.R., Almond, P.C., Petchey, F., Dabell, K., Diffenbacher-Krall, A., Blaauw, M., 2013, A revised age for the Kawakawa/Oruanui tephra, a key marker for the Last Glacial Maximum in New Zealand. Quaternary Science Reviews, in press.	Yes	Basic	0	0	

Denton, George	Journal Article	Accepted	Vandergoes, M.J., Newnham, R.M., Denton, G.H., Blaauw, M., and Barrell, D.J.A., 2013, The anatomy of Last Glacial Maximum climate variations in south Westland, New Zealand, derived from pollen records. <i>Quaternary Science Reviews</i> , in press.	Yes	Basic	0	0
Denton, George	Journal Article	Accepted	Doughty, A.M., Anderson, B.M., Mackintosh, A.N., Kaplan, M.R., Vandergoes, M.J., Barrell, D.J.A., Denton, G.H., Schaefer, J.M., Chinn, T.J.H., Putnam, A.E., 2013, Evaluation of Lateglacial temperatures in the Southern Alps of New Zealand based on glacier modelling at Irishman Stream, Ben Ohau Range. <i>Quaternary Science Reviews</i> , in press.	Yes	Basic	2	0
Denton, George	Journal Article	Accepted	Kaplan, M.R., Schaefer, J.M., Denton, G.H., Doughty, A.M., Barrell, D.J.A., Chinn, T.J.H., Putnam, A.E., Andersen B.G., Mackintosh, A., Finkel, R.C., Schwartz, R., Anderson, B., 2013, The anatomy of long-term warming since 15 ka in New Zealand based on net glacier snowline rise. <i>Geology</i> , in press.	Yes	Basic	2	0
Denton, George	Journal Article	Submitted	Putnam, A.E., Schaefer, J.M., Denton, G.H., Barrell, D.J.A., Andersen, B.G., Koffman, T.N., Rowan, A.V., Finkel, R.C., Rood, D.H., Schwartz, R., Vandergoes, M.J., Plummer, M.A., Brocklehurst, S.H., Kelley, S.E., Ladig, K.L., 2013, Warming and glacier recession in the Rakaia Valley, Southern Alps of New Zealand, during Heinrich Stadial 1. <i>Earth and Planetary Science Letters</i> , submitted	Yes	Basic	3	0
Denton, George	Journal Article	Submitted	Golledge, N.R., Levy, R.H., McKay, R.M., Fogwill, C.J.H., White, D.A., Graham, A.G.C., Smith, J.A., Hillenbrand, C.-D., Licht, K.J., Denton, G.H., Ackert, R.P., Jr., Maas, S.M., and Hall, B.L., 2013, Glaciology and geological signature of the Last Glacial Maximum Antarctic ice sheet. <i>Quaternary Science Reviews</i> , submitted.	Yes	Basic	0	0
Dieffenbacher-Krall, Ann	Journal Article	Published	Vandergoes, M.J., A.G. Hogg, D.J. Lowe, R.M. Newnham, G.H. Denton, J. Southon, D.J.A. Barrell, C.J.N. Wilson, M.S. McGlone, A.S.R. Allan, P.C. Almond, F. Petchey, K. Dabell, A.C. Dieffenbacher-Krall, and M. Blaauw. 2012. A revised age for the Kawakawa/Oruanui tephra, a key marker for the Last Glacial Maximum in New Zealand. <i>Quaternary Science Reviews</i> . http://dx.doi.org/10.1016/j.quascirev.2012.11.006 .	Yes	Basic	0	0
Dieffenbacher-Krall, Ann	Journal Article	Submitted	Dieffenbacher-Krall, A.C., H. Borns, S. Birkel, G. Langley, L. Cwynar, L. Doner, C.C. Dorion, J. Fastook, G. Jacobson, A. Nurse, C. Sayles. In review. Younger Dryas paleoenvironments and ice dynamics in Northern Maine: a multi-proxy, case history. <i>Journal of Quaternary Science</i> .	Yes	Basic	1	1
Fastook, James L.	Journal Article	Published	Fastook, J.L., Head, J.W., Marchant, D.R., Forget, F. and Madeleine, J.B., 2012. Early Mars Climate Near the Noachian-Hesperian Boundary: Independent Evidence for Cold Conditions from Basal Melting of the South Polar Ice Sheet (Dorsa Argentea Formation) and Implications for Valley Network Formation. <i>Icarus</i> , V. 219, p. 25-40).	Yes		0	0
Fastook, James L.	Journal Article	Published	Mayewski, P.A., Maasch, K.A., Dixon, D., Sneed, S.B., Oglesby, R., Korotkikh, E., Potocki, M., Grigholm, B., Kreutz, K. Kurbatov, A.V., Spaulding, N., Stager, J.C. Taylor, K.C., Steig, E.J. White E., Bertler N.A.N., Goodwin, I., Simoes, J.C., Jana, R., Kraus, S., and Fastook J., 2012. West Antarctica's Sensitivity to Natural and Human-forced Climate Change over the Holocene. <i>Journal of Quaternary Science</i> , Volume ISSN 0267-8179. DOI: 10.1002/jqs.2593.	Yes		0	0
Fastook, James L.	Journal Article	Accepted	Spatial Sensitivities of the Greenland Ice Sheet to Environmental Changes: Insights from the SeaRISE Ice Sheet Modeling Project. Sophie Nowicki, Robert A. Bindschadler, Ayako Abe-Ouchi, Andy Aschwanden, Ed Bueler, Hyeungu Choi, Jim Fastook, Glen Granzow, Ralf Greve, Gail Gutowski, Ute Herzfeld, Charles Jackson, Jesse Johnson, Constantine Khroulev, Eric			0	0

			Larour, Anders Levermann, William H. Lipscomb, Maria A. Martin, Mathieu Morlighem, Byron R. Parizek, David Pollard, Stephen F. Price, Diandong Ren, Eric Rignot, Fuyuki Saito, Tatsuru Sato, Hakime Seddik, Helene Seroussi, Kunio Takahashi, Ryan Walker, and Wei Li Wang, JGR, in Press, 2013.			
Fastook, James L.	Journal Article	Accepted	Spatial Sensitivities of the Antarctic Ice Sheet to Environmental Changes: Insights from the SeaRISE Ice Sheet Modeling Project. Sophie Nowicki, Robert A. Bindshadler, Ayako Abe-Ouchi, Andy Aschwanden, Ed Bueler, Hyeungu Choi, Jim Fastook, Glen Granzow, Ralf Greve, Gail Gutowski, Ute Herzfeld, Charles Jackson, Jesse Johnson, Constantine Khroulev, Eric Larour, Anders Levermann, William H. Lipscomb, Maria A. Martin, Mathieu Morlighem, Byron R. Parizek, David Pollard, Stephen F. Price, Diandong Ren, Eric Rignot, Fuyuki Saito, Tatsuru Sato, Hakime Seddik, Helene Seroussi, Kunio Takahashi, Ryan Walker, and Wei Li Wang, JGR, in Press, 2013.		0	0
Fastook, James L.	Journal Article	Accepted	Ice-Sheet Model Sensitivities to Environmental Forcing and Their Use in Projecting Future Sea-Level (The SeaRISE Project). Robert A. Bindshadler, Sophie Nowicki. Ayako Abe-Ouchi, Andy Aschwanden, Hyeungu Choi, Jim Fastook, Glen Granzow, Ralf Greve, Gail Gutowski, Ute Herzfeld, Charles Jackson, Jesse Johnson, Constantine Khroulev, Anders Levermann, William H. Lipscomb, Maria A. Martin, Mathieu Morlighem, Byron R. Parizek, David Pollard, Stephen F. Price, Diandong Ren, Fuyuki Saito, Tatsuru Sato, Hakime Seddik, Helene Seroussi, Kunio Takahashi, Ryan Walker, Wei Li Wang. Jpurnal of Glaciology, in Press, 2013.		0	0
Fastook, James L.	Abstract	Published	Fastook, J.L. and Head, J.W. 2012. Mid-Latitude Amazonian Glaciation on Mars: Controls on Accumulation and Glacial Flow Patterns. Lunar and Planetary Science XXXX111, V#1296.	Yes	0	0
Fastook, James L.	Abstract	Published	Fastook, J.L. and Head, J.W. 2013. Amazonian Non-Polar Glaciation: Supply-Limited Glacial History and the Role of Ice Sequestration. Lunar and Planetary Science XXXXIV, V#1256. http://www.lpi.usra.edu/meetings/lpsc2013/		0	0
Fernandez, Ivan	Journal Article	Published	Raymond, Jay E., Ivan J. Fernandez, Tsutomu Ohno, and Kevin Simon. 2013. Soil drainage class influences on soil carbon in a New England Forested Watershed. Soil Sci. Soc. Am. J. 77:307–317.	Yes	1	0
Fernandez, Ivan	Journal Article	Published	Lawrence, Gregory B., Ivan J. Fernandez, Daniel D. Richter, Donald S. Ross, Paul W. Hazlett, Scott W. Bailey, Rock Ouimet, Richard A. F. Warby, Arthur H. Johnson, Henry Lin, James M. Kaste, Andrew G. Lapenis, and Timothy J. Sullivan. 2013. Measuring environmental change in forest ecosystems by repeated soil sampling: A North American Perspective. J. Environ. Qual. doi:10.2134/jeq2012.0378.	Yes	0	0
Fernandez, Ivan	Journal Article	Published	Fatemi, Farrah R., Ivan J. Fernandez, Stephen A. Norton and Lindsey E. Rustad. 2013. Soil solution response to two decades of experimental acidification at the Bear Brook Watershed in Maine. Water Air Soil Pollut. 223:6171–6186.	Yes	1	0
Fernandez, Ivan	Journal Article	Accepted	Mineau, Madeleine M., Chad M. Grigsby, Damon T. Ely, Ivan J. Fernandez, Stephen A. Norton, Tsutomu Ohno, H. Maurice Valett, and Kevin S. Simon. 2013. Chronic catchment nitrogen enrichment and stoichiometric constraints on the bioavailability of dissolved organic matter from leaf leachate. Freshwater Biology (in press).	Yes	0	0
Fernandez, Ivan	Book Chapter	Published	Amirbahman, Aria and Ivan J. Fernandez. 2012. Mercury in Soils. In: Mercury in the Environment: Pattern and Process. Michael S. Bank (ed.). University of California Press,	Yes	0	0

			Berkeley, CA. pp. 99-118.			
Fernandez, Ivan	Book Chapter	Accepted	Norton, S. A., Kopáček, J., and Fernandez, I. J., 2013, in press, Acidification and Acid Rain: in Holland, H. D. and Turekian K. K. (eds.), Treatise on Geochemistry, 9, 2nd Edition, Chapter, Pergamon Press.	Yes	0	0
Fernandez, Ivan	Proceedings	Published	Fernandez, Ivan J., Stephen A. Norton, and Tiffany Wilson (eds.). 2012. BIOGEOMON 2012, The 7th International Symposium on Ecosystem Behavior. Northport, Maine. ISBN 978-0-87723-108-0. 261 pp. http://www3.villanova.edu/conferences/biogeomon/		0	0
Hall, Brenda	Journal Article	Submitted	Levy, L., Kelly, M., Lowell, T., Hall, B., Hempel, L., Honsaker, W., Lusas, A., Howley, J., and Axford, Y., 2013. Holocene fluctuations of Bregne ice cap, Scoresby Sund, east Greenland: a proxy for climate along the Greenland Ice Sheet margin. Quaternary Science Reviews, in review.	Yes	3	1
Hall, Brenda	Journal Article	Published	Antibus, D., Leff, L., Hall, B., Baeseman, J., and Blackwood, C., 2012. Molecular characterization of ancient algal mats from the McMurdo Dry Valleys, Antarctica. Antarctic Science 24, 139-146.	Yes	1	0
Hall, Brenda	Journal Article	Published	Antibus, D., Leff, L., Hall, B., Baeseman, J., and Blackwood, C., 2012. Cultivable bacteria from ancient algal mats from the McMurdo Dry Valleys, Antarctica. Extremophiles 16,105-114.	Yes	1	0
Hall, Brenda	Journal Article	Published	Bromley, G.R.M., Hall, B.L., Stone, J.O., and Conway, H., 2012. Late Pleistocene evolution of Scott Glacier, southern Transantarctic Mountains: Implications for the Antarctic contribution to deglacial sea level. Quaternary Science Reviews 50, 1-13.	Yes	1	0
Hall, Brenda	Journal Article	Published	Garcia, J.L., Kaplan, M.R., Hall, B.L., Schaefer, J., Vega, R.M., Schwartz, R., and Finkel, R., 2012. Glacier expansion in southern Patagonia throughout the Antarctic Cold Reversal. Geology 40, 859-862.	Yes	1	0
Hall, Brenda	Journal Article	Submitted	Garcia, J.L., Hall, B.L., Kaplan, M., Vega, R., and Strelin, J., 2012. Glacial geomorphology of the Torres del Paine region: Implications for glaciation, deglaciation, and paleolake history. Geomorphology, submitted.	Yes	1	0
Hall, Brenda	Journal Article	Published	Hall, B., Denton, G., Stone, J., and Conway, H., 2013. History of the grounded ice sheet in the Ross Sea sector of Antarctica during the last glacial maximum and the last termination. Geological Society of London, doi 10.1144/SP381.5	Yes	0	0
Hall, Brenda	Journal Article	Published	Hall, B., Porter, C., Denton, G., Lowell, T., and Bromley, G., 2013. Collapse of Cordillera Darwin glaciers in southernmost South America during Heinrich Stadial 1. Quaternary Science Reviews, 62, 49-55.	Yes	0	0
Hall, Brenda	Journal Article	Accepted	Konfal, S., Wilson, T., and Hall, B., 2013. Paleoshoreline records of glacial isostatic adjustment in the Dry Valleys region, Antarctica. Geological Society of London, in press.	Yes	1	0
Hall, Brenda	Journal Article	Published	Lowell, T., Hall, B., Kelly, M., Bennike, O., Lusas, A., Smith, C., Levy, L., Travis, S., and Denton, G., 2013. Late Holocene expansion of Istorvet Ice Cap, east Greenland. Quaternary Science Reviews 63, 128-140.	Yes	2	0
Hall, Brenda	Journal Article	Published	Stumpf, A., Elwood Madden, M., Soreghan, G., Hall, B., and Keiser, L., 2012. Glacier meltwater stream chemistry in Wright and Taylor Valleys, Antarctica: Significant roles of drift, dust, and biological processes in chemical weathering in a polar climate. Chemical Geology 322/323, 79-	Yes	1	0

Hall, Brenda	Journal Article	Submitted	John B. Anderson, Howard Conway, Philip J. Bart, Alex E. Kirshner, Sarah L. Greenwood, Robert M. McKay, Brenda L. Hall, Robert P. Ackert, Kathy Licht, Martin Jakobsson, John O. Stone, 2013. Ross Sea Paleodrainage and Deglacial History During and Since the LGM. Quaternary Science Reviews, submitted.	Yes		0	0
Hall, Brenda	Abstract	Accepted	Lowell, T., Wilcox, P., Hall, B., Medford, A., Kelly, M., and Levy, L., 2013. Late Holocene expansion of the Greenland Ice Sheet and implications for its current decay. CLIVAR Meeting, Boston, MA.	Yes		3	0
Hall, Brenda	Abstract	Accepted	Kelly, M., Levy, L., Lowell, T., and Hall, B., 2013. Late glacial-early Holocene fluctuations of Greenland Ice Sheet outlet glaciers and adjacent local ice caps in central east Greenland. CLIVAR Meeting, Boston, MA.	Yes		1	0
Hall, Brenda	Abstract	Submitted	Megan Elwood Madden, Kristen Marra, Leslie Keiser, Alison Stumpf, Gerilyn Soreghan, Andy Elwood Madden, and Brenda Hall, 2013. Influence of climate-related physical weathering processes on chemical weathering: Comparing stream solute/sediment geochemistry and sediment surface area in glacial and non-glacial catchments. Catchment Science: Interactions of Hydrology, Biology & Geochemistry Gordon Conference, Andover, NH.	Yes		2	0
Hall, Brenda	Abstract	Published	Bromley, G., Hall, B.L., Thompson, W., Garcia, J.L., Kaplan, M., and Schaefer, J., 2012. Age of the Androscoggin Moraine, western Maine and eastern New Hampshire, from ¹⁰ Be surface exposure-age dating. Northeast Geological Society of America Meeting, Bretton Woods, New Hampshire.	Yes		0	0
Hall, Brenda	Abstract	Published	Medford, A., Hall, B.L., Lowell, T., Kelly, M., *Levy, L., *Wilcox, P., and Axford, Y., 2012. Holocene glacial history of Renland, East Greenland, reconstructed from lake sediments. Northeast Geological Society of America Meeting, Bretton Woods, New Hampshire.	Yes		3	0
Hall, Brenda	Abstract	Published	Wilcox, P., Lowell, T., Hall, B.L., Kelly, M., Medford, A., Levy, L., and Axford, Y., 2012. Holocene stratigraphy of lakes in Graben Land, East Greenland: implications for an expanded ice sheet. Northeast Geological Society of America Meeting, Bretton Woods, New Hampshire.	Yes		3	0
Hall, Brenda	Abstract	Published	Bromley, G., Schaefer, J.M., Winckler, G., Hall, B.L., Todd, C.E., and Rademaker, K., 2012. A glacial record of the last termination in the southern tropical Andes. American Geophysical Union Annual Meeting, San Francisco, CA.	Yes		1	0
Hall, Brenda	Abstract	Published	Konfal, S., Wilson, T., Bevis, M., Kendrick, E., and Hall, B., 2012. GPS and paleoshoreline record of solid earth deformation in Southern Victoria Land, Antarctica. SCAR Open Science Conference, Portland, Oregon.	Yes		1	0
Hall, Brenda	Abstract	Published	Jackson, M., Hall, B., and Denton, G., 2012. History of the Ross Sea ice sheet in Salmon Valley during the last glaciation. 19th Annual West Antarctic Ice Sheet Meeting, Pack Forest Park, Washington.	Yes		1	0
Hall, Brenda	Abstract	Published	Dengler, E., Hall, B., Stone, J., and Conway, H., 2012. Late Cenozoic glacial history of Shackleton Glacier, Antarctica. 19th Annual West Antarctic Ice Sheet Meeting, Pack Forest Park, Washington.	Yes		1	0
Hamilton, Gordon	Journal Article	Published	Khan, S.A., Kjær, K.H, Korsgaard, N.J, Wahr, J.M, Joughin, I.R., Bamber, J.L., Csatho, B.M., Van den Broeke, M., Stearns, L.A., Nielsen, K., Babonis, G., Hamilton, G.S., Hurkmans R., &	Yes	Basic	0	0

			L.H. Timm. 2012. Rapid dynamic thinning events during 1985-2010 on Upernavik Isstrom, West Greenland. <i>Journal of Geophysical Research</i> , 118, doi:10.1029/2012JF002481.					
Hamilton, Gordon	Journal Article	Published	Breton, D.B., B. Koffman, A.V. Kurbatov, K. Kreutz, & G.S. Hamilton, 2012. Quantifying Signal Dispersion in a Hybrid Ice Core Melting System for Geochemical and Microparticle Analysis. <i>Environmental Science & Technology</i> , 46, 11922– 11928.	Yes	Basic	2	0	
Hamilton, Gordon	Journal Article	Published	Spaulding, N.E., V.B. Spikes, G.S. Hamilton, P.A. Mayewski and A.V. Kurbatov. 2012. Ice motion and mass balance at the Allan Hills Blue Ice Area, Antarctica, with implications for paleoclimate reconstructions. <i>Journal of Glaciology</i> , 58(208), 399-406.	Yes	Basic	2	0	
Hamilton, Gordon	Journal Article	Accepted	Straneo, F., P. Heimbach, O. Sergienko, G.S. Hamilton, G. Catania, S. Griffies, R. Hallberg, A. Jenkins, I. Joughin, R. Motyka, W.T. Pfeffer, S.F. Price, E. Rignot, T.A. Scambos, M. Truffer and A. Vieli. 2013. Understanding the dynamic response of Greenland's marine terminating glaciers to oceanic and atmospheric forcing. <i>Bulletin of the American Meteorological Society</i> , 94, doi:10.1175/BAMS-D-12-00100, in press.	Yes	Basic	0	0	
Hamilton, Gordon	Journal Article	Accepted	Schild, K.M. and G.S. Hamilton. 2013. Seasonal variations in outlet glacier terminus positions in Greenland. <i>Journal of Glaciology</i> , 59, in press.	Yes	Basic	1	0	
Hamilton, Gordon	Journal Article	Submitted	Sneed, W.A., G.S. Hamilton and J.E. Box. Submitted. Balance characteristics of the floating ice tongue at Nioghalvfjerdingsfjorden Glacier, northeast Greenland and evidence for recent change. <i>Journal of Glaciology</i> , in review.	Yes	Basic	1	0	
Hamilton, Gordon	Journal Article	Submitted	Weitz, N.A., G.S. Hamilton and J.L. Fastook. Submitted. Evaluating trigger mechanisms for the retreat and acceleration of Helheim Glacier using a 2.5D ice flow model. <i>Journal of Glaciology</i> , in review.	Yes	Basic	1	0	
Hooke, Roger	Journal Article	Published	Hooke, R. LeB., Martin-Duque, J.F., and Pedraza, J., 2012, Land Transformation by humans: <i>GSA Today</i> , p. 4-10.	Yes	Basic	0	0	
Hooke, Roger	Journal Article	Published	Drumlins: a product of a thermo-mechanical instability: <i>Quaternary Research</i> , v. 79(3), p. 458-464.	Yes	Basic	1	0	
Hooke, Roger	Journal Article	Published	Kletetschka, G., Hooke, R. LeB., Ryan, A., Fercana, G., McKinney, E., and Schwebler, K.P., 2013, Sliding stones of Racetrack Playa, Death Valley, USA: The roles of rock thermal conductivity and fluctuating water levels. <i>Geomorphology</i> (in press)(Published on-line on 3 May 2013).	Yes	Basic	0	0	
Hooke, Roger	Journal Article	Submitted	Hooke, R. LeB., Cummings, D.I., Lesemann, J., and Sharpe, D.R. 2013, Genesis of ore plumes in till: <i>Canadian Journal of Earth Sciences</i> , v. (Conditionally accepted with minor changes).	Yes	Basic	0	0	
Jain, Shaleen	Journal Article	Published	Kim, J.-S., W. Zou, X. Wang, and S. Jain (2012), El Niño Modoki and the Summer Precipitation Variability over South Korea: A diagnostic study. <i>Journal of the Meteorological Society of Japan</i> , 90, 5, 673-684. doi: 10.2151/jmsj.2012-507.	Yes	Applied	0	0	
Kelley, Alice	Journal Article	Submitted	Kelley, A.R., and Sanger, D. <i>Geoarchaeology: A Matter of Scale and Context: Integrating Geosciences within Archaeological Research</i> , <i>Archaeological and Anthropological Sciences</i> (Submitted).			0	0	
Kelley, Alice	Journal Article	Submitted	Kelley, J.T., Belknap, D.F., Kelley, A.R., Claesson, S., (in press), A Site Model for Drowned Terrestrial Habitats with Associated Archeological Remains: Northwestern Gulf of Maine, USA,	Yes		0	0	

			Marine Geology.				
Kelley, Alice	Book Chapter	Published	Robinson, Brian and Kelley, Alice R., 2012 (in press), The Pleistocene Epoch and Paleoindian Occupation, in Stephen J. Hornsby and Richard W. Judd, editors, Historical Atlas of Maine, University of New England Press, Biddeford, Maine.	Yes		0	0
Kelley, Joseph	Journal Article	Accepted	Kelley, J.T., Belknap, D.F., Kelley, A.R., and Claesson, S., 2013, A site model for drowned terrestrial habitats with associated archeological remains: northwestern Gulf of Maine, Marine Geology (in press).	Yes	Basic	0	0
Kelley, Joseph	Journal Article	Accepted	Kelley, J.T., 2013, Popham Beach, Maine: can human actions appropriately mimic natural processes in the coastal zone? Geomorphology, (in press).	Yes	Basic	0	0
Kelley, Joseph	Journal Article	Published	Brothers, L.L., Kelley, J.T., Belknap, D.F., Barnhardt, W.A., Andrews, B., Legere, C., and Clarke, J.H., 2012, Estuarine pockmark field origins: high resolution geophysical and vibracore results northwestern Gulf of Maine and Bay of Fundy: Marine Geology v. 329-331, p. 34-45.	Yes	Basic	1	0
Kelley, Joseph	Book Chapter	Accepted	Kelley, J.T., 2013, Coastal bluffs of New England. in Kennedy, D.M., Stephenson, W.J., and Naylor, L., Rock coast geomorphology: a global synthesis, Cambridge University Press, (in press).	Yes	Basic	0	0
Kelley, Joseph	Book Chapter	Submitted	Kelley, J.T., and Belknap, D.F., 2013, Gravel spit evolution in Maine, USA. In Sand and gravel spits, Coastal Education and Research Foundation Coastal Research Library, Randazzo, G., Cooper, J.A. G., and Jackson, D., (eds.), in submission.	Yes	Basic	0	0
Kelley, Joseph	Abstract	Published	Wilson, K.R., 2012, and Kelley, J.T., Reeve, A.S. and Belknap, D.F., 2012. Morphological controls on Maine's salt marshes: dynamic salt marsh pools, groundwater and sea-level rise. Geological Society of America Abstracts with Programs v. 44, no. 7, p. 181.	Yes	Basic	1	0
Kelley, Joseph	Abstract	Published	Mansfield, M., Belknap, D.F., Kelley, J.T., 2012, The critical leading edge of Mine salt marshes-interface with freshwater wetlands. Geological Society of America Abstracts with Programs v. 44, no. 7, p.181.	Yes	Basic	1	0
Kelley, Joseph	Abstract	Published	Sorrell, L.M., Kelley, J.T., Kelley, A.R., 2012. 18th and 19th Century coastal sand inundation, Shetland, UK., Geological Society of America Abstracts with Programs v. 44, no. 7, p. 194.		Basic	1	0
Kelley, Joseph	Abstract	Published	Kelley, J.T., Belknap, D.F., 2012. Spatial and bathymetric controls on drowned shorelines in the western Gulf of Maine. Geological Society of America Abstracts with Programs v. 44, no. 7, p. 449.	Yes	Basic	0	0
Kelley, Joseph	Abstract	Published	Cooper, J.A.G., Kelley, J.T., Belknap, D.F., Jackson, D.T., Quinn, R., Plets, R., Edwards, R., Long, A.J., Long, D. and Monteys, X., 2012. Submerged shorelines in the Irish Sea: spatial variability in form and preservation. Geological Society of America Abstracts with Programs v. 44, no. 7, p. 449.	Yes	Basic	0	0
Kelley, Joseph	Abstract	Published	Kelley, A.R., Sandweiss, D.H., Kelley, J.T., Belknap, D.F. and Mauricia-Llonto, C., 2012, Ground-penetrating radar identification and characterization of an earlymonumental structure, North Coast, Peru. Geological Society of America Abstracts with Programs v. 44, no. 7, p. 567.		Basic	1	0
Kelley, Joseph	Abstract	Published	Wilson, K.R., 2012, and Kelley, J.T., Tanner, B., and Belknap, D.F., 2013, Fingerprinting pools in the stratigraphic record: implications for understanding morphological change in north temperate salt marsh systems. Geological Society of America, Southeast Section meeting, GSA	Yes	Basic	0	0

Abstracts with Programs.

Kelley, Joseph	Abstract	Published	Wilson, K.R., 2012, and Kelley, J.T., and Belknap, D.F., 2013, Salt pools drive surficial transformation of Maine salt marshes. Geological Society of America, GSA Abstracts with Programs, vol. 45, p. 65-66.	Yes	Basic	0	0
Kelley, Joseph	Abstract	Published	Kelley, J.T., 2013, Popham Beach, Maine: an example of engineering activity that saved beach property without harming the beach. Geological Society of America, GSA Abstracts with Programs, v. 45, p. 124.	Yes	Basic	0	0
Kelley, Joseph	Abstract	Published	Belknap, D.F., Kelley, J.T., Wilson, K.R. and Mansfield, M., 2013. Basal peats and the critical leading edge of Holocene transgression. Geological Society of America, GSA Abstracts with Programs, vol 45, p. 125.	Yes	Basic	1	0
Kelley, Joseph	Abstract	Published	Jacobacci, K.E., Belknap, D.F. and Kelley, J.T., 2013. Landslide risk assessment on the coast of Maine. Geological Society of America, GSA Abstracts with Programs, vol. 45, p. 125.	Yes	Basic	1	0
Kelley, Joseph	Other	Published	Kelley, A., Kelley, J.T., 2012, Surficial geology of the Old Town Quadrangle. Maine Geological Survey Open-File No. 12-15; http://www.maine.gov/doc/nrimc/mgs/pubs/online/surficial/qc-old-town.pdf	Yes	Applied	0	0
Kelley, Joseph	Other	Published	Kelley, J.T., 2012, Coastal Photograph of Fair Head, Northern Ireland, UK, Punta Arenas, Peru, St Ninian's Bar, Scotland, and Sand Beach, Maine; Just Cerfing v. 3, # 4, p. 7-10.		Basic	0	0
Koons, Peter	Journal Article	Published	Koons, P.O. P.K. Zeitler, B. Hallet, 2012, Tectonic Aneurysms and Mountain Building, in: Treatise on Geomorphology, Volume 5.19 doi:10.1016/B978-0-12-374739-6.00094-4 32pp.	Yes		0	0
Koons, Peter	Journal Article	Published	Campbell, S., S. Roy, K. Kreutz, S.A. Arcone, E.C. Osterberg, P.O. Koons, 2013, Strain-rate estimates for crevasse formation at an alpine ice divide: Mount Hunter, Alaska, Annals of Glaciology 54(63) 2013 doi:10.3189/2013AoG63A266.	Yes		1	0
Koons, Peter	Journal Article	Published	Birkel, S. D., Putnam, A. E., Denton, Koons, P. O., Fastook, J. L., Putnam, D. E., Maasch, K. A., 2012. Climate inferences from a glaciological reconstruction of the Late Pleistocene Wind River Ice Cap, Wind River Range, Wyoming. Arctic, Antarctic, and Alpine Research, 44(3), p. 265-276.	Yes		2	0
Koons, Peter	Journal Article	Published	Gorman, A.R., M.G. Hill, A.R. Orpin, P.O. Koons, C.A. Landis, T.M.H. Allan, T. Johnstone, F.L. Gray, D. Wilson, E.C. Osterberg, Quaternary shelf structures SE of the South Island, imaged by high-resolution seismic profiling, New Zealand Journal Geology and Geophysics, v. 56. p. 68-82 DOI:10.1080/00288306.2013.772906.	Yes		0	0
Koons, Peter	Abstract	Published	Roy, S.G., Koons, P.O., Tucker, G.E., Upton, P. (2012). The influence of tectonic strain on geomorphic metrics, Abstract EP41C-0806 presented at 2012 Fall Meeting, AGU, San Francisco, Calif., 3-7 Dec.	Yes		1	0
Koons, Peter	Abstract	Published	Foley, M., Koons, P., Gerbi, C., 2013, Characterizing the 3-D influence of lower crustal localization on the surficial kinematics of an orogen, in GSA Abstracts with Programs, Northeastern GSA Section Meeting, Bretton Woods, NH, March 2013, p. 120.	Yes		1	0
Kreutz, Karl	Journal Article	Submitted	Winski, D., Kreutz, K.J., Osterberg, E.O., Campbell, S., and Wake, C., 2012, Modeling surface energy balance on the Kahiltna Glacier, Denali National Park, Central Alaska Range, Journal of	Yes	Basic	2	0

			Glaciology, submitted.					
Kreutz, Karl	Journal Article	Published	Breton, D., Koffman, B., Kurbatov, A., Kreutz, K., and Hamilton, G., 2012, Quantifying Signal Dispersion in a Hybrid Ice Core Melting System for Geochemical and Microparticle Analysis, Environmental Science and Technology, submitted.	Yes	Basic	2	0	
Kreutz, Karl	Journal Article	Published	Kelsey, E.P., Wake, C.P., Yalcin, K., and Kreutz, K.J., 2012, Eclipse ice core accumulation and stable isotope variability as an indicator of North Pacific climate, Journal of Climate, 25, 6426-6440.	Yes		1	0	
Kreutz, Karl	Journal Article	Accepted	Winski, D., Kreutz, K.J., Osterberg, E.O., Campbell, S., and Wake, C., 2012, High Frequency Observations of Melt Effects on Snowpack Stratigraphy, Kahiltna Glacier, Central Alaska Range, Hydrological Processes, accepted.	Yes		2	0	
Kreutz, Karl	Journal Article	Published	Ahn, J., Brook, E., Schmittner, A., and Kreutz, K.J., 2012, Abrupt change in atmospheric CO2 during the last ice age, Geophysical Research Letters, 39, L18711, doi:10.1029/2012GL053018.	Yes		0	0	
Kreutz, Karl	Book Chapter	Published	Kreutz, K.J., and Koffman, B., 2013, Ice core methods: Glaciochemistry, in Encyclopedia of Quaternary Science 2nd edition, S. Elias, ed., Elsevier Publishers, accepted.	Yes		1	0	
Kurbatov, Andrei	Journal Article	Published	Spaulding N., V. Spikes, G. Hamilton, P. Mayewski, N. Dunbar, R. Harvey, J. Schutt, and A. Kurbatov. Ice motion and mass balance at the allan hills blue ice area, antarctica, with implications for paleoclimate reconstructions. Journal of Glaciology, 58(208):399–406, 2012.	Yes	Basic	1	0	
Kurbatov, Andrei	Journal Article	Submitted	N. Spaulding, A. Kurbatov, M. Bender, H. J.A., P. Mayewski, S. Arcone, S. Campbell, N. Dunbar, and D. Introne. Climate archives from 80-250 ka in horizontal and vertical ice cores from the allan hills blue ice area, antarctica. Quaternary Research, 2012 (in review).	Yes	Basic	2	0	
Kurbatov, Andrei	Journal Article	Published	D. Breton, B. Koffman, A. Kurbatov, and G. Kreutz, K.J. and Hamilton. Quantifying signal dispersion in a hybrid ice core melting system. Environmental Science and Technology, 46(21):11922–11928, 20 Oct 2012 2012.	Yes	Basic	2	0	
Kurbatov, Andrei	Journal Article	Published	S. Kraus, A. Kurbatov, and M. Yates. Geochemical signatures of tephra from antarctic peninsula volcanoes. Andean Geology, 40(1):1–40, January 2013.	Yes	Basic	0	0	
Kurbatov, Andrei	Journal Article	Published	P. A. Mayewski, K. A. Maasch, D. Dixon, S. B. Sneed, R. Oglesby, E. Korotkikh, M. Potocki, B. Grigholm, K. Kreutz, A. V. Kurbatov, N. Spaulding, J. C. Stager, K. C. Taylor, E. J. Steig, J. White, N. A. N. Bertler, I. Goodwin, J. C. Simoes, R. Jana, S. Kraus, and J. Fastook. West antarctica's sensitivity to natural and human-forced climate change over the holocene. Journal of Quaternary Science, 28(1):40–48, 2012.	Yes	Basic	4	0	
Kurbatov, Andrei	Journal Article	Submitted	B. Koffman, K. Kreutz, A. Kurbatov, and N. Dunbar. Using microparticles from the WAIS Divide ice core to infer the potential source of past volcanic eruptions. Geophysical Research Letters, page 2012GL054292, in review 2013.	Yes	Basic	1	0	
Kurbatov, Andrei	Journal Article	Submitted	E. V. Korotkikh, P. A. Mayewski, D. Dixon, M. Potocki, A. V. Kurbatov, M. Handley, J. C. Simoes, and R. Jana. Recent increase in Ba concentrations as recorded in a South Pole ice core. Geophysical Research Letters, in review 2013.	Yes	Basic	2	0	
Kurbatov, Andrei	Abstract	Published	N. W. Dunbar, A. Kurbatov, and W. C. McIntosh. Antarctic tephrochronology: A maturing record of visible layers and cryptotephra. In Abstract V31F-06 presented at 2012 Fall Meeting,		Basic	0	0	

			AGU, San Francisco, Calif., 2012.					
Kurbatov, Andrei	Abstract	Published	N. W. Dunbar, A. Kurbatov, and W. McIntosh. Further development the robust Antarctic volcanic record using tephra layers from the wais divide wdc06a ice core. WAIS Divide Science Meeting, Scripps Seaside Forum, La Jolla, CA, USA, September 11-12 2012.		Basic		0	0
Kurbatov, Andrei	Abstract	Published	B. G. Koffman, K. Kreutz, A. Kurbatov, N. Dunbar, and D. Breton. The wais divide microparticle record illuminates the nature of past volcanic eruptions and indicates variability in southern hemisphere westerly wind intensity. WAIS Divide Science Meeting, Scripps Seaside Forum, La Jolla, CA, USA, September 11-12 2012.		Basic		2	0
Kurbatov, Andrei	Abstract	Published	N. Spaulding, A. Kurbatov, J. Higgins, P. A. Mayewski, M. Bender, and D. Introne. Insights on wais his- tory from a high-resolution eemian record collected at the allan hills blue ice area, antarctica. Nineteenth Annual WAIS Workshop, Pack Forest Conference Center, Eatonville, Washington, U.S.A., September 19-22 2012.		Basic		1	0
Maasch, Kirk	Journal Article	Published	Birkel SD, Putnam AE, Denton G, Koons PO, Fastook JL, Maasch KA, Putnam DE, 2012. Climate inferences from a glaciological reconstruction of the Late Pleistocene Wind River Ice Cap, Wind River Range, Wyoming. Arctic Antarctic and Alpine Research, 44,265-276.	Yes			1	0
Maasch, Kirk	Journal Article	Published	Mayewski PA, Maasch KA, Dixon DA, Sneed SB, Oglesby RJ, Korotkikh E, Potocki M, Grigholm B, Kreutz K, Kurbatov AV, Spaulding N, Stager JC, Taylor KC, Steig EJ, White J, Bertler NAN, Goodwin I, Simoes JC, Jana R, Kraus S, Fastook J. 2013. West Antarctica's Sensitivity to Natural and Human-forced Climate Change Over the Holocene. JOURNAL OF QUATERNARY SCIENCE 28(1) 40-48.	Yes			5	0
Maasch, Kirk	Journal Article	Submitted	Mayewski, PA, Sneed, SB, Birkel, SB, Kurbatov, AV Maasch, KA, 2013. Abrupt onset of Holocene climate marked by reduced storminess and longer summers around Greenland, Nature Geosciences.	Yes	Basic		0	0
Maasch, Kirk	Book Chapter	Published	Climate Change and Cultural Dynamics: Lessons from the Past for the Future (David G. Anderson, Kirk A. Maasch, and Daniel H. Sandweiss.) In Humans and the Environment: New Archaeological Perspectives for the 21st Century, edited by Matthew Davies and Freda Nkirete. Oxford University Press, Oxford.	Yes			0	0
Mayewski, Paul	Journal Article	Published	Mayewski, P.A., Maasch, K.A., Dixon, D., Sneed, S.B., Oglesby, R., Kurbatov, A.V., Korotkikh, E., Potocki, M., Grigholm, B., Kreutz, K., Taylor, K.C., Steig, E., White, J., Bertler, N.A.N., Goodwin, I., de Mello Monques, M., Tholn, I. U., Simoés, J.C., Jana, R., Kraus, S. and Fastook, J., 2013, West Antarctica's sensitivity to natural and human-forced climate change over the Holocene, Journal of Quaternary Science 1 (28), DOI: 10.1002/jqs.2593.	Yes			5	0
Mayewski, Paul	Journal Article	Published	Stager, J.C., Mayewski, P.A., White, J., Chase, B.M., Neumann, F., Meadows, M.E., King, C. and Dixon, D.A., 2012, Precipitation variability in the winter rainfall zone of South Africa during the last 1400 years linked to the austral westerlies, Climate of the Past 8, 877-1125.	Yes			1	0
Mayewski, Paul	Journal Article	Submitted	Osterberg, E., Mayewski, P.A., Kurbatov, A., Kreutz, K., White, J., Taylor, K., Sneed, S., Popp, T. and Handley, M., in review, Rapid atmospheric reorganization initiated Dansgaard-Oeschger warming events in a high resolution ice core record, Geophysical Research Letters.	Yes			1	0
Mayewski, Paul	Journal Article	Published	Steig,E.J., Ding,Q., White, J.C., Küttel, M., Rupper, S., Neumann, T.A., Neff, P., Gallant, A., Mayewski, P.A., Taylor, K., Hoffan, G., Dixon, D.A., Schoenmann, S., Markle, B., Fudge, T.J., Schneider, D.P., Schauer, A.J., Teel, R.P., Vaughn, B.H., Burgener, L., Williams, J. and	Yes			1	0

			Korotkikh, E., 2013, An assessment of of recent climate and glaciological changes in West Antarctica, Nature Geosciences, doi: 10.1038/NGEO1778.			
Mayewski, Paul	Journal Article	Published	Plummer, C. T., M. A. J. Curran, T. D. Van Ommen, S. O. Rasmussen, A. D. Moy, T. R. Vance, H. B. Clausen, B. M. Vinther, and P. A. Mayewski, 2012, An independently dated 2000- year volcanic record from Law Dome, East Antarctica, including a new perspective on the dating of the c. 1450s eruption of Kuwae, Vanuatu, Clim. Change Past Dis., 8, 1567- 1590, doi:10.5194/cpd-8-1567-2012.	Yes	0	0
Mayewski, Paul	Journal Article	Accepted	Goodwin, I.D., Browning, S., Lorrey, A., Mayewski, P.A., Phipps, S.J., Bertler, N.A.N., Edwards, R., Cohen, T., van Ommen, T., Curran, M., Barr, C. and Stager, S., in press, A reconstruction of the Indo-Pacific extratropical atmospheric longwave patter during the medieval Climate Anomaly, Climate Dynamics.	Yes	0	0
Mayewski, Paul	Journal Article	Published	Spaulding, N. E., Spikes, V.B., Hamilton, G.H., Mayewski, P.A., Dunbar, N.W., Harvey, R.P., Schutt, J. and Kurbatov, A.V., 2012, Ice motion and mass balance at the Allen Hills blue ice area, Antarctica, with implications for paleoclimate reconstructions, J. Glaciology 58, 399-406.		1	0
Mayewski, Paul	Journal Article	Published	Pang, H., Hou, S., Kaspari, S., Mayewski, P.A., Masson-Delmotte, V., Jouzel, J., Li, Z., He, Y., Hong, S., and Qin, D., 2012, Atmospheric circulation change in the central Himalayas indicated by a high resolution ice core deuterium excess record, Climate Research.53, 1-12, doi:10.3354/cr0190.	Yes	0	0
Mayewski, Paul	Journal Article	Submitted	Aizen, V.B., Aizen, E.M., Takeuchi, N., Mayewski, P.A., Grigholm, B., Joswiak, D.R., Fujita, K., Nikitin, S. and Nakawo, M., in review, Abrupt and moderate climate changes at high mid-latitudes of Asia during the Holocene.	Yes	1	0
Mayewski, Paul	Journal Article	Published	Mayewski, P.A., 2012, Invited review of Science in the snow: fifty years of international collaboration through the Scientific Committee on Antarctic Research by. D.W.H. Walton and P.D. Clarkson (2011), Cambridge: Scientific Committee on Antarctic Research, 258 pp. ISBN 978-0-948277-25-2, Polar Research 2012, 31, 19275, http://dx.doi.org/10.3402/polar.v31i0.19275 .	Yes	0	0
Mayewski, Paul	Journal Article	Submitted	Kang, S., Wang, F., Morgenstern, U., Zhang, Y., Grigholm, B., Kaspari, S., Schwikowski, M., Ren, J., Yao, T., Qin, D. and Mayewski, P.A., in review, Dramatic thinning of high elevation glaciers in the Tibetan Plateau revealed by ice core tritium and mercury records.	Yes	1	0
Mayewski, Paul	Journal Article	Submitted	Sneed, S.B., Mayewski, P.A., Sayre, W.G., Handley, M.J. and Taylor, K.C., in review, Micrometer resolution chemical analysis of ice cores by LA-ICP-MS.	Yes	1	0
Mayewski, Paul	Journal Article	Submitted	Alencar, A.S., Evangelista, H., Corrêa, S.M., Wainer, I., Jaña, R., Potocki, M., Kurbatov, A.V., Mayewski, P.A. and Simões, J.C., in review, A prospective analysis of VOC and aerosol compositions at Detroit Plateau, Antarctic Peninsula.	Yes	1	0
Mayewski, Paul	Journal Article	Published	Turner, J., Barrand, N., Bracegirdle, T., Convey, P., Hodgson, D., Jarvis, M., Jenkins, A., Marshall, G., Roscoe, H., Shanklin, J., Wolff, E., French, J., Goose, H., Guglielmin, M., Gutt, J., Jacobs, S., Kennicutt, C., Masson-Delmotte, V., Mayewski, P., Navarro, F., Robinson, S., Scambos, T., Sparrow, M., Speer, K., Summerhayes, C., Thompson, D. and Klepikov, A., 2013, Antarctic climate Change and the Environment – An Update, The Polar Record, 1-23, doi:10.1017/S0032247413000296.	Yes	0	0

Mayewski, Paul	Journal Article	Submitted	Ballard, Bischoff, Dominguez-Vazquez, Firestone, Horn, Isade-Alcantara, Kennett, Kinzie, Kurbatov, Mayewski, Stafford, Stich, Valente, West and Wolbach, in review, Evidence of widespread biomass burning at the Younger Drays boundary at 12.8ka.	Yes		0	0
Mayewski, Paul	Journal Article	Submitted	Spaulding, N.E., Kurbatov, A.V., Bender, M.L., Higgins, J.A., Mayewski P.A., Arcone, S.A., Campbell, S., Dunbar, N. W. and Introne, D.S., in review, Verification of the potential for developing paleoclimate records exceeding those in existing deep ice core records - Allan Hills Blue Ice Area, East Antarctica.	Yes		1	0
Mayewski, Paul	Journal Article	Submitted	Korotkikh, E. V., Mayewski, P.A., Dixon, D., Potocki, Handley, M., Introne, D. and Kurbatov, A.V., in review, Recent decrease in Ba and As concentrations as recorded in a South Pole ice core.	Yes		2	0
Mayewski, Paul	Journal Article	Submitted	Pang, H., Hou, S., Kaspari, S. and Mayewski, P.A., in review, Influence of regional precipitation patterns on stable isotopes in ice cores from the central Himalayas.	Yes		0	0
Mayewski, Paul	Journal Article	Submitted	Osterberg, E.C., Mayewski, P.A., Kreutz, K.J., Fisher, D.A., Maasch, K.A., Sneed, S.B., in review. Ice core record of Aleutian Low variability and tropical teleconnections since 500 AD, J. Geophys. Res.	Yes		2	0
Mayewski, Paul	Journal Article	Submitted	Kelsey, E., Wake, C., Osterberg, E., Kreutz, K., Mayewski, P., to be submitted to JGR. Reconstructing Winter North Pacific Sea-Level Pressure Anomalies Over the Past Three Centuries Using the Eclipse and Mt. Logan Ice Cores.	Yes		0	0
Mayewski, Paul	Journal Article	Submitted	Zdanowicz, C., Fisher, D., Bourgeois, J., Demuth, M., Zheng, J., Mayewski, P.A., Kreutz, K., Osterberg, E., Yalcin, K., Wake, C., Steig, E., Froese, D. and Goto-Azuma, K., in review, Ice cores from the St. Elias Mountains, Yukon Territory, Canada: Their significance for climate, atmospheric composition and volcanism in the North Pacific region, Arctic Special Issue KLRS Anniversary.	Yes		0	0
Mayewski, Paul	Journal Article	Submitted	Mayewski, P.A., Sneed, S.B., Birkel, S.D., Kurbatov, A.V. and Maasch, in review, Abrupt onset of Holocene climate marked by reduced storminess and longer summers around Greenland.	Yes		0	0
Mayewski, Paul	Proceedings	Published	Mayewski, P.A., Birkel, S., Maasch, K. and Kurbatov, A., 2013, Recent increase in wind speed and precipitation over the west coast of southern South America: cause and implications, Climate Change Institute Mini Paper, University of Maine.			0	0
Mayewski, Paul	Proceedings	Published	Korotkikh, E. Mayewski, P.A., Dixon, D., Potocki, M., Kurbatov, A. and Handley, M., 2013, Evidence of hemispheric- and local-scale atmospheric pollution in a South Pole ice core, Climate Change Institute Mini Paper, University of Maine.			2	0
Mayewski, Paul	Proceedings	Published	Birkel, S., Mayewski, P.A., Maasch, K. and Koons, P., 2013, The Climate Reanalyzer, Climate Change Institute Mini Paper, University of Maine.			0	0
Mayewski, Paul	Proceedings	Published	Spaulding, N. E., Mayewski, P.A., Dacic, R., Sneed, S.B., Handley, M., Introne, D. and Kurbatov, A.V., in review, Glacial-interglacial variability in paired surface and ice core records from the Allen Hills Blue Ice Area.	Yes		2	0
McGill, Brian	Journal Article	Published	Sergio Estrada-Villegas, McGill, Brian J.; Kalko, Elisabeth K. V. - "Climate, habitat and species interactions at different scales determine the structure of a neotropical bat community" (Ecology 93(5):1183:1193).	Yes	Basic	1	0

McGill, Brian	Journal Article	Published	Sergio Estrada-Villegas, McGill, Brian J.; Kalko, Elisabeth K. V. - "Determinants of species evenness in a neotropical bat ensemble" (Oikos online early).	Yes	Basic	1	0
McGill, Brian	Journal Article	Published	Cook, Benjamin J, Elizabeth M Wolkovich, T Jonathan Davies, Toby R Ault, Julio L Betancourt, Jenica M Allen, Kjell Bolmgren, Elsa E Cleland, Theresa M Crimmins, Nathan J B Kraft, Lesley T Lancaster, Susan J Mazer, Brian J McGill, Gregory J McCabe, Camille Parmesan Stephanie Pau, James Regetz, Nicolas Salamin, Mark D Schwartz, Steven E Travers - "Sensitivity of spring phenology to warming across temporal and spatial climate gradients in two independent databases" (Ecosystems 15(8):1283-1294).	Yes	Basic	0	0
McGill, Brian	Journal Article	Published	Samson, J ; Berteaux, D; McGill, Brian J. and Humphries, M – "Demographic Amplification of Climate Change Experienced by the Contiguous United States Population during the 20th Century" (PLOS One 7(10):e45683, doi:10.1371/journal.pone.0045683, 8 pages).	Yes	Basic	1	0
McGill, Brian	Journal Article	Published	Elizabeth M. Wolkovich, B. I. Cook, J. M. Allen, T. M. Crimmins, J. L. Betancourt, S. Travers, S. Pau, J. Regetz, T. J. Davies, N. J. B. Kraft, T. R. Ault, K. Bolmgren, S. J. Mazer, G. J. McCabe, B. J. McGill, C. Parmesan, N. Salamin, M. D. Schwartz & E. E. Cleland – "Warming experiments underpredict plant phenological responses to climate change" (Nature 2012 485(24 May):494-497).	Yes	Basic	0	0
McGill, Brian	Journal Article	Published	Maurer, Brian A., Steven Kembel, Andrew Rominger, Brian J. McGill– "Estimating metacommunity extent using data on species abundances, environmental variation, and phylogenetic relationships across geographic space" (Ecological Informatics 13:114-122).		Basic	1	0
McGill, Brian	Journal Article	Published	Dornelas, M., Magurran, A., Buckland, S., Chazdon, R., Chao, A., Colwell, R., Curtis, T., Gotelli, N., Kosnik, M., McGill, B., Morlon, H., Mumby, P., Øvreås, L., Stuedeny, A. and Vellend, M. Quantifying temporal change in biodiversity: challenges and opportunities (Proceedings of the Royal Society B 2013 280(1750).		Basic	0	0
McGill, Brian	Journal Article	Published	Bahn, Volker and Brian J. McGill – "Testing the predictive performance of distribution models" (Oikos 2013 122(3):321-331).	Yes	Basic	0	0
McGill, Brian	Book Chapter	Published	Isaac, Nicholas, Carbone, Chris and McGill Brian J – "Chapter 8 Population and Community Ecology" chapter in "The Metabolic Theory of Ecology" edited by James Brown, Astrid-Kodric Brown and Richard Sibley (Wiley-Blackwell May 2012).	Yes		0	0
McGill, Brian	Book Chapter	Published	McGill, Brian J – "Species assemblages, macroecology and global change" (Encyclopedia of Biodiversity 2nd Edition, Edited by Simon Levin, Elsevier, in press).	Yes	Basic	0	0
McGill, Brian	Book Chapter	Published	McGill, Brian J – "A macroecological approach to the equilibrational vs. nonequilibrium debate using bird populations and communities" in "Nonequilibrium ecology and global change" edited by Klaus Rohde, Cambridge University Press.	Yes	Basic	0	0
McGill, Brian	Editorial	Published	Cyrille Violle, Brian J. Enquist, Brian J. McGill – "Viva la variance: a reply to Nakagawa and Schielzeth" (Trends in Ecology and Evolution in press).		Basic	1	0
Norton, Stephen	Journal Article	Published	Hongve, D., Haaland, S., Riise, R., Blakar, I., and Norton, S., 2012, Decline of Acid Rain Enhances Mercury Concentrations in Fish: Environ. Sci. Tech., 46, 2490-2491.	Yes		0	0
Norton, Stephen	Journal Article	Published	Jacobson, G.L., Norton, S.A., Grimm, E.C., Edgar, T., 2012, The influence of changing climate and sea level on mercury deposition in sediment over 60,000 years in sub-tropical Lake Tulane,	Yes		0	0

			Florida: Environ. Sci. Tech., 46, 11710-11717.			
Norton, Stephen	Journal Article	Published	Fatemi, F. R., Fernandez, I. J., Szillery, J., Norton, S. A., and Rustad, L. E., 2012, Soil solution chemical response to two decades of experimental acidification at the Bear Brook Watershed in Maine: J. Soil Sci, Soc. America. (DOI) 10.1007/s11270-012-1348-5.	Yes	0	0
Norton, Stephen	Journal Article	Accepted	Amirbahman, A., Lake, B., and Norton, S. A., 2013, in press, Seasonal phosphorus dynamics in the surficial sediment of shallow temperate lakes: A 31P-NMR study. Hydrobiologia.	Yes	0	0
Norton, Stephen	Journal Article	Accepted	Mineau, M. M., Rigsby, C. M., Elya, D. T., Fernandez, I. J., Norton, S. A., Ohno, T., Valette, H. M., and Simon, K. S., 2013, in press, Stoichiometric constraints on the bioavailability of leaf leachate dissolved organic matter under chronic catchment nitrogen enrichment. Fresh Water Biology.	Yes	0	0
Norton, Stephen	Journal Article	Accepted	Norton, S. A., Kopáček, J., and Fernandez, I. J., 2013, in press, Acidification and Acid Rain: in Holland, H. D. and Turekian K. K. (eds.), Treatise on Geochemistry, 9, 2nd Edition, Chapter, Pergamon.	Yes	0	0
Norton, Stephen	Journal Article	Submitted	Boyle, J. F., Chiverrell, R. C., Norton, S. A., and Plater, A. J., in review after revision, A leaky model of long-term soil phosphorus dynamics: Global Biogeochem. Cycles.	Yes	0	0
Norton, Stephen	Journal Article	Submitted	Boyle, J. F., Chiverrell, R., Norton, S., ready to submit, Did a surge in land-to-sea phosphorus flux drive early Holocene hypoxia of the Baltic Sea? Science.		0	0
Norton, Stephen	Journal Article	Submitted	Novák, M., Jacobson, G. L., Norton, S. A., Stepanova, M., Grimm, E. C., Jackova1, I., and Buzek1, F., in review after revision, Variation in sulfur isotopes from continental and marine aerosols in a 60,000-year sediment core from Lake Tulane, central Florida, USA: Chem. Geol.	Yes	0	0
Norton, Stephen	Journal Article	Submitted	Owen, R. B., Longcore, J. R., Norton, S. A., in review, Characteristics of Mineral Springs in Northern Maine, USA: Northeast Naturalist.	Yes	0	0
Norton, Stephen	Abstract	Published	Mineau, M., Fatimi, F., Fernandez, I., Simon, K., and Norton, S., 2012, Terrestrial and aquatic microbial enzyme responses to shifting nitrogen and phosphorus availability: experiments at the whole-watershed scale. Enzyme Workshop, Colorado.		1	0
Norton, Stephen	Abstract	Published	Norton, S. A., Fernandez, I. J., Navrátil, T., Simon, K. S., and Jain, S., 2012, The Bear Brook Watershed in Maine (BBWM): 25 years of monitoring, manipulation, and modeling: BIOGEOMON 2012: 7th International Symposium on Ecosystem Behavior, Northport, Maine.		0	0
Norton, Stephen	Abstract	Published	Jacobson, G.L., Norton, S.A., Grimm, E.C., Edgar, T., 2012, The influence of changing climate and sea level on mercury deposition in sediment over 60,000 years in sub-tropical Lake Tulane, Florida: BIOGEOMON 2012: 7th International Symposium on Ecosystem Behavior, Northport, Maine.		0	0
Norton, Stephen	Abstract	Published	Fernandez, I. J., Norton, S. A., Nelson, S. J., and Salvino, C., 2012, Evidence of transient alteration of N dynamics from an ice storm at the Bear Brook Watershed in Maine, USA: BIOGEOMON 2012: 7th International Symposium on Ecosystem Behavior, Northport, Maine.		1	0
Norton, Stephen	Abstract	Published	Mineau, M. M., Simon, K. S., Fernandez, I. J., Norton, S. A., and Valett, H. M., 2012, The effect of chronic watershed nitrogen deposition and acidification on the interaction among phosphorus, carbon, and nitrogen uptake in streams: BIOGEOMON 2012: 7th International Symposium on		0	0

			Ecosystem Behavior, Northport, Maine.						
Norton, Stephen	Abstract	Published	Fatemi, F., Fernandez, I., Simon, K., Norton, S., and Rustad, R., 2012, Does chronic N enrichment alter ecosystem-scale C:N:P stoichiometry? BIOGEOMON 2012: 7th International Symposium on Ecosystem Behavior, Northport, Maine.					0	0
Norton, Stephen	Abstract	Published	Olsen, A. A., Johnson, D. J., Amirbahman, A., and Norton, S. A., 2012, Influences of dissolved organic carbon, iron, and aluminum photochemistry on phosphorus cycling in surface waters: BIOGEOMON 2012: 7th International Symposium on Ecosystem Behavior, Northport, Maine.					1	0
Norton, Stephen	Abstract	Published	Fernandez, I. J., Mineau, M. M., Simon, K. S., and Norton, S. A., 2012, The influence of decadal scale N enrichment on N dynamics and 15N discrimination in a New England forested watershed: Soil Sci. Soc. America Annual Meeting.					0	0
Norton, Stephen	Abstract	Published	Jacobson, G. L., Norton, S. A., Grimm, E. C., Edgar, T., 2012, Changing climate and sea level alter Hg mobility at Lake Tulane, Florida USA: Annual Meeting, SETAC.					0	0
Norton, Stephen	Abstract	Submitted	Gruselle, M.-C., Fernandez, I., Simon, K., Norton S., 2013, The effects of long-term ecosystem N enrichment on 15N dynamics at the Bear Brook Watershed in Maine. NERC 2013 Conference, Saratoga Springs, NY.	Yes				0	0
Norton, Stephen	Abstract	Submitted	Salvino, C., Fernandez, I. J., Gruselle, M.-C., Norton, S. A., 2013, Phosphorus and Complementary Element Stoichiometry During a Mineral Soil Weathering Experiment in Maine Forest Soils. NERC 2013 Conference, Saratoga Springs, NY.					1	0
Norton, Stephen	Abstract	Submitted	Norton, S. A., Amirbahman, A., and Fernandez, I. J., 2013, Phosphorus Availability in Lakes from Deglaciation to the Present. New England Chapter of the North American Lake Management Society, Annual Meeting, Standish, Maine.					0	0
Norton, Stephen	Abstract	Submitted	Norton, S. A. and Jacobson, G. L., 2013, What can Florida paleolimnology can teach us about Hg dynamics in New England lakes? New England Chapter of the North American Lake Management Society, Annual Meeting, Standish, Maine.					0	0
Olsen, Brian	Journal Article	Published	Warner, S.E., W.G. Shriver, B.J. Olsen, R. Greenberg, and R. J. Taylor. 2012. Feathers as indicators of mercury exposure in tidal marsh sparrows: Differences by age, feather type, and species. Archives of Environmental Contamination and Toxicology. 63(1). DOI: 10.1007/s00244-012-9783-2.	Yes	Basic			1	0
Olsen, Brian	Journal Article	Submitted	Olsen, BJ, R Greenberg, JR Walters, RC Fleischer. In Revision. Sexual dimorphism in a feeding apparatus: Ecological niche partitioning or sexual selection on an honest indicator? Behavioral Ecology.	Yes	Basic			0	0
Olsen, Brian	Journal Article	Submitted	Robertson, EP and BJ Olsen. In Revision. Responses of rail productivity to water level variability. Journal of Wildlife Management.	Yes	Applied			1	0
Olsen, Brian	Journal Article	Submitted	Cattrano, K, N Perlut, BJ Olsen, and JD McCabe. In Review. Increased social information does not benefit body condition of long-distance migrants during migration stopover. Wilson Bulletin.	Yes	Basic			1	1
Olsen, Brian	Journal Article	Submitted	McCabe, JM, and BJ Olsen. In Review. A validated model for migratory stopover distribution in North America: Identifying generalizable predictors of site use. Ecology.	Yes	Basic			1	0

Olsen, Brian	Journal Article	Submitted	Greenberg, R, AG Wilson, BJ Olsen, B Ballentine, N Rotzel McInerney, RC Fleischer. In Review. Geographic population structure and subspecific boundaries in a tidal marsh sparrow. Conservation Genetics.	Yes	Basic	0	0
Peterson, Michael	Journal Article	Published	J.W. Bridge, M.L. Peterson, C.W. McIlwraith, "The Effect of Temperature on the Tangent Modulus of Granular Composite Sport Surfaces", Experimental Techniques, DOI: 10.1111/j.1747-1567.2012.00851.x.	Yes	Applied	1	0
Peterson, Michael	Journal Article	Published	J. Kaitlyn Allen, Michael L. Peterson, George V. Sharrard, Dana L. Wright and Sean K. Todd, "Radiated noise from commercial ships in the Gulf of Maine: implications for whale vessel collisions", J Acoust Soc Am. 2012 Sep;132(3):EL229-35. doi: 10.1121/1.4739251.	Yes	Applied	2	0
Peterson, Michael	Journal Article	Published	Raul Urbina, Michael L. Peterson, Richard W. Kimball, Geoffrey S. DeBree, Matthew P. Cameron, "Modeling and validation of a cross flow turbine using free vortex model and a modified dynamic stall model", Renewable Energy Volume 50, February 2013, Pages 662–669.	Yes	Applied	2	0
Peterson, Michael	Journal Article	Published	Christie Mahaffey, Michael Peterson, Lars Roepstorff, "The effects of varying cushion depth on dynamic loading in shallow sand dirt thoroughbred horse racetracks", Biosystems Engineering, 2013, 114, Pages 178-186.	Yes	Applied	1	0
Peterson, Michael	Journal Article	Published	Anna Demeo, Michael Peterson, "A Human Ecological Approach to Energy Literacy through hands-on projects: An Essential Component of Effectively Addressing Climate Change", Journal of Sustainability Education, Journal of Sustainability Education, Vol. 4, January 2013.	Yes	Applied	1	0
Peterson, Michael	Journal Article	Published	Kaitlyn A. Mullen, Michael L. Peterson, Sean K. Todd, "Has designating and protecting critical habitat had an impact on endangered North Atlantic right whale ship strike mortality?", Marine Policy 42 (2013) 293–304.	Yes	Applied	1	0
Peterson, Michael	Journal Article	Accepted	Anne E. Demeo and Michael L Peterson, "Small Organic Farm Renewable Energy Demonstration Project Based on Incremental Capital Investment and Community Participation", Journal of Agriculture, Food Systems, and Community Development, accepted.	Yes	Applied	1	0
Robinson, Brian S.	Journal Article	Published	Hrynick, Martin and Brian Robinson, 2012, Quantifying Gravel from a Ceramic Period Living Surface in Downeast Maine. The Maine Archaeological Society Bulletin 52:27-43.			0	1
Robinson, Brian S.	Journal Article	Published	Robinson, Brian S. 2012, Culture History, Clovis First and Contributions of the Review of Archaeology. Review of Archaeology 30:1-12.			0	0
Robinson, Brian S.	Book Chapter	Published	Robinson, Brian S. 2012 The Bull Brook Paleoindian Site and Jeffreys Ledge: A Gathering Place near Caribou Island? In Late Pleistocene Archaeology and Ecology in the Far Northeast, edited by Claude Chapdelaine. Texas A&M University Press.	Yes		0	0
Robinson, Brian S.	Book Chapter	Published	Robinson, Brian S. and Jennifer Ort, 2013, Spatial Organization at Bull Brook. In the Eastern Fluted Point Tradition, edited by Joseph Gingerich, pp.104-120. The University of Utah Press, Salt Lake City.	Yes		1	0
Robinson, Brian S.	Technical Report	Submitted	Robinson, Brian S. 2013, Indian Island Water Line Archaeology: Down Street, 2011, Preliminary report on work done by the University of Maine, Submitted to the Penobscot Tribal Historic Preservation Office, Old Town.			0	0
Robinson, Brian S.	Technical	Submitted	Robinson, Brian S. 2012, Archaeological Testing of the Wigwam Site (78-3) on the Machias River, July 2012, draft report submitted to Downeast Salmon Federation and the Passamaquoddy			0	0

	Report		Tribal Historic Preservation Office.					
Roscoe, Paul B.	Journal Article	Published	Carballo, David M., Paul Roscoe, and Gary M. Feinman, 2012. Cooperation and Collective Action in the Cultural Evolution of Complex Societies. <i>Journal of Archaeological Method and Theory</i> . DOI 10.1007/s10816-012-9147-2.	Yes	Basic	0	0	
Roscoe, Paul B.	Journal Article	Accepted	Roscoe, Paul, n.d. The End of War in Papua New Guinea: 'Crime' and 'Tribal Warfare' in Post-colonial States. <i>Anthropologica</i> , in press.	Yes	Basic	0	0	
Roscoe, Paul B.	Book Chapter	Published	Roscoe, Paul, 2012. The Contact-era Economics of the Polynesian Outlier Communities. In <i>Polynesian Outliers; The State of the Art</i> . Richard Feinberg and Richard Scaglione, eds. Pp.91-108. <i>Ethnology Monographs</i> , No.21. Pittsburgh: University of Pittsburgh Press.		Basic	0	0	
Roscoe, Paul B.	Book Chapter	Published	Roscoe, Paul, 2013. War, Collective Action, and the 'Evolution' of Politics. <i>Cultural and Evolutionary Dynamics of Cooperation</i> , David Carballo, ed. Pp.57-82. Boulder, CO: Colorado University Press.	Yes	Basic	0	0	
Roscoe, Paul B.	Book Chapter	Published	Roscoe, Paul, 2012. Before Elites: The Political Capacities of Big-Men. <i>Before Elites: Alternatives to Hierarchical Systems in Modelling Social Formations</i> , Vol.1, Tobias L. Kienlein and Andreas Zimmerman, eds. Pp.41-54. <i>Universitätsforschungen zur prähistorischen</i> .		Basic	0	0	
Roscoe, Paul B.	Book Chapter	Published	Roscoe, Paul, 2013. Social Signaling, Conflict Management, and the Construction of Peace. In <i>War, Peace, and Human Nature: The Convergence of Evolutionary and Cultural Views</i> , Douglas P. Fry, ed. Pp.475-494. Oxford: Oxford University Press.		Basic	0	0	
Sandweiss, Dan	Journal Article	Published	Sandweiss, D.H. and A.R. Kelley, 2012. Archaeological Contributions to Climate Change Research: The Archaeological Record as a Paleoclimatic and Paleoenvironmental Archive. <i>Annual Review of Anthropology</i> 41:371–391. http://arjournals.annualreviews.org/eprint/CAFcG2ZZWdAg4paqE9IG/full/10.1146/annurev-anthro-092611-145941	Yes	Basic	0	0	
Sandweiss, Dan	Journal Article	Published	Perez-Huerta, A., M.F. Etayo-Cadavid, C.F.T. Andrus, T.E. Jeffries, C. Watkins, S.C. Street, and D.H. Sandweiss, 2013. El Niño Impact on Mollusk Biomineralization—Implications for Trace Element Proxy Reconstructions and the Paleo-Archeological Record. <i>PLoS ONE</i> 8(2): e54274. doi:10.1371/journal.pone.0054274. http://www.plosone.org/article/fetchObject.action?uri=info%3Adoi%2F10.1371%2Fjournal.pone.0054274&representation=PDF	Yes		0	0	
Sandweiss, Dan	Journal Article	Published	Etayo-Cadavid, M.F., C.F.T. Andrus, K.B. Jones, G.W.L. Hodgins, D.H. Sandweiss, S. Uceda C., and J. Quilter, 2013. Marine Radiocarbon Reservoir Age Variation in <i>Donax Obesulus</i> Shells from Northern Peru: Late Holocene Evidence for Extended El Niño. <i>Geology</i> 41:599-602.	Yes	Basic	0	0	
Sandweiss, Dan	Journal Article	Published	Sandweiss, D.H. and K.M. Rademaker, 2013. El poblamiento del sur peruano: costa y sierra. <i>Boletín de Arqueología PUCP</i> 15:275-293.		Basic	0	0	
Sandweiss, Dan	Journal Article	Accepted	Rademaker, K., G.R.M. Bromley, and D.H. Sandweiss, in press. Peru Archaeological Radiocarbon Database, 13,000-7000 14C B.P. In <i>Quaternary International</i> .	Yes	Basic	0	0	
Sandweiss, Dan	Book Chapter	Accepted	Anderson, D.G, K.A. Maasch, and D.H. Sandweiss, in press. Climate Change and Cultural Dynamics: Lessons from the Past for the Future. In <i>Humans and the Environment: New Archaeological Perspectives for the Twenty-First Century</i> , ed. by M.I.J. Davies and F.N.	Yes	Basic	0	0	

			M' mbogori, pp. 243-256. Oxford: Oxford University Press.					
Sandweiss, Dan	Book Chapter	Accepted	Sandweiss, D.H., in press. Early Occupation of the Central Andean Coast. In <i>The Cambridge Prehistory</i> , ed. By C. Renfrew and P. Bahn. Cambridge: University of Cambridge Press.	Yes	Basic	0	0	
Sandweiss, Dan	Book Chapter	Accepted	Hunter, S.J., K.J. Libby, and D.H.Sandweiss, in press. The Global Impact of the 2008 Financial Crisis on Higher Education: A View from Maine. Proceedings of the The Global Financial Crisis and Future Outlook Conference, Emirates Center for Strategic Studies and Research, Abu Dhabi UAE, November 26-27, 2012.		Basic	0	0	
Sandweiss, Dan	Other	Accepted	Sandweiss D.H. and K. Rademaker, in press, Agriculture and Domestication at Waynuna. In <i>Encyclopedia of Global Archaeology</i> . Springer. In press.		Basic	0	0	
Saros, Jasmine	Journal Article	Published	Slemmons, K.E.H.& J.E. Saros. 2012. Implications of nitrogen-rich glacial meltwater for phytoplankton diversity and productivity in alpine lakes. <i>Limnology & Oceanography</i> 57: 1651-1663.	Yes	Basic	1	0	
Saros, Jasmine	Journal Article	Published	Saros, J.E., Stone, J.R., Pederson, G.T., Slemmons, K.E.H., Spanbauer, T., Schliep, A., Cahl, D., Williamson, C.E. & D.R. Engstrom. 2012. Climate-induced changes in lake ecosystem structure inferred from coupled neo- and paleo-ecological approaches. <i>Ecology</i> 93: 2155-2164.	Yes	Basic	4	0	
Saros, Jasmine	Journal Article	Published	Wolfe, A.P., Hobbs, W.O., Birks, H.H., Briner, J.P., Holmgren, S.U., Ingolfsson, O., Kaushal, S.S., Miller, G.H., Pagani, M., Saros, J.E. & R.D. Vinebrooke. 2013. Stratigraphic expressions of the Holocene-Anthropocene transition revealed in sediments from remote lakes. <i>Earth-Science Reviews</i> 116: 17-34.	Yes	Basic	0	0	
Saros, Jasmine	Journal Article	Published	Apollonio, S. & J.E. Saros. 2013. Over-winter observations of the freshwater copepod <i>Limnocalanus macrurus</i> in the Canadian Arctic Archipelago, September 1961-July 1962: numbers, weights, respiration. <i>Arctic</i> 66: 37-42.	Yes	Basic	0	0	
Saros, Jasmine	Journal Article	Published	Strock, K.E., Saros, J.E., Simon, K.S., McGowan, S. & M.T. Kinnison. 2013. Cascading effects of generalist fish introduction in oligotrophic lakes. <i>Hydrobiologia</i> 711: 99-113.	Yes	Basic	1	0	
Saros, Jasmine	Journal Article	Published	Kissman, C.E.H., Williamson, C.E., Rose, K.C. & J.E. Saros. 2013. Response of phytoplankton in an alpine lake to inputs of dissolved organic matter through nutrient enrichment and trophic forcing. <i>Limnology & Oceanography</i> 58: 867-880.	Yes	Basic	1	0	
Saros, Jasmine	Journal Article	Submitted	Kissman, C.E.H., Williamson, C.E., Rose, K.C. & J.E. Saros. Terrestrial DOM subsidies alter pelagic consumer:producer ratios in unexpected ways. Submitted to <i>Ecology</i> .	Yes	Basic	0	0	
Saros, Jasmine	Journal Article	Submitted	Rose, K.C., Hamilton, D., McBride, C., Williamson, C.E., Saros, J.E., Fisher, J., Olson, M., Allan, M. & N. Cabrol. Light attenuation characteristics of glacially- and non-glacially-fed lakes. Submitted to <i>Limnology & Oceanography</i> .	Yes	Basic	0	0	
Saros, Jasmine	Journal Article	Submitted	Tuckett, Q., Simon, K.S., Saros, J.E., Halliwell, D.B. & M.T. Kinnison. Trophic divergence along a lake productivity gradient revealed by historic invasions and contemporary eutrophication. Submitted to <i>Freshwater Biology</i> .	Yes	Basic	1	0	
Saros, Jasmine	Journal Article	Submitted	Demi, L.M., Simon, K.S., Anderson, D., Coghlan, S.M., Saros, J.E. & R. Saunders. The influence of trophic state in determining the strength of cascading trophic interactions: insights from anadromous alewife lakes. Submitted to <i>Freshwater Science</i> .	Yes	Basic	1	0	

Saros, Jasmine	Journal Article	Submitted	Slemmons, K.E.H., Saros, J.E. & K.S. Simon. The influence of glacial meltwater on alpine aquatic ecosystems: a review. Submitted to Environmental Science: Processes & Impacts.	Yes	Basic	1	0
Saros, Jasmine	Journal Article	Submitted	Saros, J.E., Strock, K.E., McCue, J., Hogan, E. & N.J. Anderson. Response of Cyclotella species to nutrients and incubation depth in arctic lakes. Submitted to Journal of Plankton Research.	Yes	Basic	1	1
Saros, Jasmine	Journal Article	Submitted	Apollonio, S. & J.E. Saros. Temporal and spatial dynamics of ice-covered Upper Dumbell Lake (Ellesmere Island, Arctic Canada) during the summer of 1959. Submitted to Arctic, Antarctic, & Alpine Research.	Yes	Basic	0	0
Schauffler, Molly	Journal Article	Published	Zoellick, W., Nelson, S.J., Schauffler, M., (2012). Participatory Science and Participatory Education: Bringing Both Views into Focus. <i>Frontiers in Ecology and Environment</i> 10(6): 310-313. (Invited paper for special issue on citizen science).	Yes		0	0
Sorg, Marcella	Journal Article	Submitted	Crist, Thomas and Marcella H. Sorg. Adult Scurvy in New France: Samuel de Champlain's "Mal de la terre" at Saint Croix Island, 1604-1605. <i>International Journal of Paleopathology</i> .	Yes		0	0
Sorg, Marcella	Book Chapter	Published	Sorg, Marcella H., William D. Haglund, and Jamie A. Wren (2012) Research in Forensic Taphonomy. In Dirkmaat, D.C., Editor, <i>A Companion to Forensic Anthropology</i> . Blackwell Publishing, pp. 477-498.			0	1
Sorg, Marcella	Book Chapter	Published	Crist, Thomas, Marcella H. Sorg, Molly Crist and John Benson (2012) The Skeletons at St. Croix Island. In Pendery, Steven, Editor, <i>St. Croix Island, Maine: History, Archaeology, and Interpretation</i> . Occasional Publications in Maine Archaeology, No. 14, pp. 185-222.			0	0
Sorg, Marcella	Book Chapter	Published	Marden, Kerriann, Marcella H. Sorg, and William D. Haglund (2012) Taphonomy. In Elizabeth A. DiGangi and Megan K. Moore, Editors, <i>Research Methods in Human Skeletal Biology</i> . New York: Academic Press, pp. 241-262.	Yes		0	0
Sorg, Marcella	Book Chapter	Submitted	Sorg, Marcella H. and William D. Haglund (2013 forthcoming) Forensic Anthropology. In Stuart H. James, Jon J. Nordby and Suzanne Bell, Editors, <i>Forensic Science: An Introduction to Scientific and Investigative Techniques</i> . Boca Raton, FL: CRC Press.			0	0
Sorg, Marcella	Proceedings	Published	Marcella H. Sorg and Kerriann Marden (2013) Developing Frameworks for Regional Forensic Taphonomy Research and Practice: A Multi-Regional Symposium. <i>Proceedings of the American Academy of Forensic Sciences</i> 19:454-455.	Yes		0	0
Sorg, Marcella	Proceedings	Published	Marcella H. Sorg, Jamie A. Wren, and William D. Parker (2013) Regional and Micro-Environmental Taphonomic Variation and Decomposition in Northern New England. <i>Proceedings of the American Academy of Forensic Sciences</i> 19:463.	Yes		0	0
Sorg, Marcella	Proceedings	Published	Sorg, Marcella H. (2012) Drug Abuse Patterns and Trends in Maine – Update: January 2012. Epidemiologic Trends in Drug Abuse: Proceedings of the Community Epidemiology Work Group, Highlights and Executive Summary. U.S. Dept. of Health and Human Services, National Institutes of Health, Division of Epidemiology, Services and Prevention Research, National Institute on Drug Abuse, pp 45-46. (http://www.drugabuse.gov/sites/default/files/cewg_january_2012_tagged_v2.pdf)			0	0
Sorg, Marcella	Proceedings	Published	Sorg, Marcella H. (2012, forthcoming) Patterns and Trends of Drug Abuse in Maine, 2010. Epidemiologic Trends in Drug Abuse: Proceedings of the Community Epidemiology Work Group, Volume II, June 2011. U.S. Dept. of Health and Human Services, National Institutes of Health, Division of Epidemiology, Services and Prevention Research, National Institute on Drug			0	0

			Abuse, pp. 163-172. (http://www.drugabuse.gov/sites/default/files/cewgjune2011_vol_ii_508.pdf)					
Sorg, Marcella	Other	Published	Anne L. Rogers, Marcella H. Sorg and Jamie A. Wren (2013 forthcoming) The Cost of Alcohol and Drug Abuse in Maine, 2010. Maine Department of Health and Human Services, Augusta ME. http://www.maine.gov/dhhs/samhs/osa/pubs/data/2013/Cost2010-final%20Apr%2010%2013.pdf	Applied	0	1		
Thaler, Jeffrey	Journal Article	Published	42 Environmental Law Journal 1101 (December 2012). http://law.lclark.edu/live/files/13156-thalerready-for-websitepdf	Yes	Applied	0	0	
Thaler, Jeffrey	Technical Report	Published	January 2013 E2Tech and MOWII . http://www.e2tech.org/Resources/Documents/MOWII_Offshore_Wind_Roadmap_JAN2013.pdf		Applied	0	0	
Thaler, Jeffrey	Technical Report	Published	E2Tech and MOWII websites . http://www.e2tech.org/Resources/Documents/MOWII_MHK_Roadmap_JAN2013.pdf		Applied	0	0	
West, Catherine	Journal Article	Published	West, Catherine F., Stephen Wischniowski, and Christopher Johnston. Pacific cod (<i>Gadus macrocephalus</i>) as a Paleothermometer: Otolith Oxygen Isotope Reconstruction. <i>Journal of Archaeological Science</i> 39: 3277-3283.	Yes		0	0	
West, Catherine	Journal Article	Published	West, Catherine F. and Kayla N. Jarvis. 2012 (Early View Online). Osteometric Variation in Domestic Dogs (<i>Canis familiaris</i>) from the Kodiak Archipelago, Alaska. <i>International Journal of Osteoarchaeology</i> .	Yes		1	0	
West, Catherine	Other	Accepted	West, Catherine F. Karluk-1 Fauna (Essay). In "Kal'unek: From Karluk", edited by Amy Steffian. University of Alaska Press.			0	0	
West, Catherine	Other	Accepted	West, Catherine F. Karluk-1 Radiocarbon Dating (Essay). In "Kal'unek: From Karluk", edited by Amy Steffian. University of Alaska Press.			0	0	
West, Catherine	Other	Accepted	West, Catherine F. Book Review: "Keystone Nations - Indigenous Peoples and Salmon Across the North Pacific". <i>Alaska Journal of Anthropology</i> .			0	0	
West, Catherine	Other	Accepted	West, Catherine F. Editor. Special Section: Stable Isotopes - Methods, Applications, and Syntheses. <i>Journal of Island and Coastal Archaeology</i> .	Yes		0	0	
Zaro, Gregory D.	Journal Article	Accepted	Zaro, Gregory, K. Nystrom, and D. Keefer (in press). Environmental catastrophe and the archaeological record: Complexities of volcanism, floods, and farming in south coastal Peru, A.D. 1200-1700. <i>Andean Past</i> .	Yes		0	0	
Zaro, Gregory D.	Journal Article	Submitted	Sullivan, Lauren A., Brett A. Houk, Gregory Zaro, and Lindsey R. Moats (in review). Deciphering a Terminal Classic surface artifact deposit at Courtyard 100, La Milpa: The view from the ceramic data. <i>Research Reports in Belizean Archaeology</i> .	Yes		0	0	
Zaro, Gregory D.	Book Chapter	Submitted	Zaro, Gregory (in review). The historical ecology of landesque capital, agro-ecological diversity, and socio-environmental change in southern Peru. In <i>Landesque Capital: The Historical Ecology of Enduring Landscape Modifications</i> , edited by N. Thomas Håkansson and Mats Widgren. Left Coast Press, Walnut Creek, CA.	Yes		0	0	
Zaro, Gregory D.	Other	Published	Zaro, Gregory (2013). <i>Frontier Life in Ancient Peru: The Archaeology of Cerro la Cruz</i> , by Melissa A. Vogel. Gainesville, University of Florida Press, 224 pp. <i>Journal of Anthropological</i>			0	0	

PRESENTATIONS: INTERNATIONAL/NATIONAL/REGIONAL/STATE/LOCAL

Name	Date	Scope	Description	GS	US
Belknap, Daniel F.	07/18/12	International	Belknap, D.F., 2012, Coastal marshes and shorelines, BIOGEOMON Conference, July, 2012, Northport, ME. Field Trip guide and presentation	0	0
Belknap, Daniel F.	11/05/12	International	Mansfield, M.E., Belknap, D.F. and Kelley, J.T., 2012, The critical leading edge of Gulf of Maine salt marshes – interface with freshwater wetlands: Geological Society of America Abstracts with Programs, v. 44, no. 7 (Annual Meeting), Abstract 66-2, p. 181-182 [BELKNAP Presenter, Mansfield not available]	1	0
Belknap, Daniel F.	11/13/12	State	Belknap, D.F., 2012, Comparison of glaciomarine units and sea-level changes in the Gulf of Maine and around Ireland. Invited Seminar, Department of Geology and Atmospheric Sciences, Iowa State University, Ames, Iowa	0	0
Belknap, Daniel F.	03/20/13	Regional	Belknap, D.F., Kelley, J.T., Wilson, K., and Mansfield, M.E., 2013, Basal peats and the critical leading edge of Holocene transgression: Geological Society of America Abstracts with Programs, v. 45, no. 1 (NE Section Meeting), Abstract 67-7, p. 125	1	0
Belknap, Daniel F.	04/08/12	International	Belknap, D.F., 2013, Submerged paleolandscapes - determination of sea-level rise and coastal change. University of Rhode Island Paleolandscape Project Initial Workshop, URI Bay Campus, Narragansett, RI	0	0
Belknap, Daniel F.	04/09/13	International	Belknap, D.F., 2013, Preservation potential of coastal archaeological sites in response to rising sea level and shoreline migration. University of Rhode Island Paleolandscape Project Initial Workshop, URI Bay Campus, Narragansett, RI	0	0
Belknap, Daniel F.	04/11/13	Regional	Belknap, D.F., 2013, Salt marsh records of sea-level change in Maine: New England Estuarine Research Society (NERRS), Portland, ME, April 11, 2013, p. 15	0	0
Chai, Fei	07/2012	International	Modeling carbon cycle in the Pacific Ocean	0	0
Chai, Fei	07/2012	International	Climate change and geo-engineering	0	0
Chai, Fei	07/2012	International	Modeling Carbon Cycle and Marine Ecosystems	0	0
Chai, Fei	01/2013	International	Modeling Carbon Cycle and Marine Ecosystems	0	0
Chai, Fei	01/2013	International	Modeling Carbon Cycle and Marine Ecosystems	0	0
Chai, Fei	03/2013	International	Marine Science Research and Education at the University of Maine	0	0
Chai, Fei	05/2013	International	Carbon Cycle and Marine Ecosystems	0	0
Chai, Fei	06/2013	International	Marine Science Research and Education at the University of Maine	0	0
Denton, George	9/17/2012	International	The Heinrich pulsebeat of Southern Hemisphere glaciation. Given at the annual meeting of the Comer Science and Education Foundation in Soldiers Grove, Wisconsin.	0	0

Fastook, James L.	6/25/2012	International	A WARMER ATMOSPHERE ON MARS NEAR THE NOACHIAN-HESPERIAN BOUNDARY: EVIDENCE FROM BASAL MELTING OF THE SOUTH POLAR ICE CAP (DORSA ARGENTEA FORMATION). J. L. Fastook, J. W. Head, D. R. Marchant, F. Forget, J.-B. Madeleine http://www.lpi.usra.edu/meetings/earlymars2012/	0	0
Fastook, James L.	6/15/2012	International	MID-LATITUDE AMAZONIAN GLACIATION ON MARS: CONTROLS ON ACCUMULATION AND GLACIAL FLOW PATTERNS. James L. Fastook and James W. Head http://spacescience.arc.nasa.gov/mars-climate-workshop-2012/home.html	0	0
Fernandez, Ivan	April 2013	Local	Bear Brook, Backpack Sprayers, and What's More Fun Than Gym Class?	0	0
Fernandez, Ivan	3/22/2013	State	Presentation on Climate Change and Maine to the Allagash Wilderness Waterway Advisory Council	0	0
Fernandez, Ivan	2013	State	Climate Change in Maine.	0	0
Fernandez, Ivan	2013	State	The End of Climate Change – What Do We Tell The Kids?	0	0
Fernandez, Ivan	2013	State	The End of Climate Change	0	0
Fernandez, Ivan	2013	State	Manganese Dynamics in the Third Decade of Forest Ecosystem Experimental Acidification and Nitrogen Enrichment	1	0
Fernandez, Ivan	2012	International	The influence of decadal-scale N enrichment on N dynamics and $\delta^{15}N$ discrimination in a New England Forested Watershed	1	0
Fernandez, Ivan	2012	International	Evidence of transient alteration of N dynamics from an ice storm at the Bear Brook Watershed in Maine, USA	1	0
Fernandez, Ivan	2012	International	Soil drainage class influences on soil carbon in a New England forested watershed, USA	1	0
Fernandez, Ivan	2012	International	The effect of chronic watershed nitrogen deposition and acidification on the interaction among phosphorus, carbon, and nitrogen uptake in streams	0	0
Fernandez, Ivan	2012	International	The Bear Brook Watershed in Maine (BBWM) at 25: manipulation, monitoring, mechanisms, and modeling	0	0
Fernandez, Ivan	2012	International	Effects of watershed acidification on abiotic and biotic phosphorus uptake in streams draining two whole-watershed experimental forests	1	0
Fernandez, Ivan	2012	International	The effects of acidification and recovery on DOM quality and source in temperate forested watersheds	1	0
Fernandez, Ivan	2012	Regional	"Building Partnerships for Sustainability Solutions"	0	0
Hall, Brenda	Sept. 2012	International	History of a grounded ice sheet in the Ross Sea Embayment at and since the Last Glacial Maximum	6	0
Hall, Brenda	June 2012	National	Glacial history, surface processes, and glaciology, Transantarctic Mountains	0	0
Hamilton, Gordon	7/2/12	National	Glaciology of the Transantarctic Mountains, Antarctica	0	0
Hamilton, Gordon	9/26/12	National	GPR Surveys of Snow Accumulation Rates in Antarctica	0	0
Hamilton, Gordon	12/3/12	International	Travels with MADGE and MABLE: near-situ and in-situ investigations of firn at Titan Dome, Antarctica (w/ Dan Breton)	1	0
Hamilton, Gordon	12/4/12	International	Simulating rapid changes of a Greenland outlet glacier using an embedded numerical model (w/ Nora Weitz and James	1	0

			Fastook)		
Hamilton, Gordon	12/5/12	International	Impact of katabatic wind events on the sea-ice and icebergs in a large glacial fjord in southeast Greenland (w/ Marilena Oltmanns, Fiamma Straneo and Kristin Schild)	2	0
Hamilton, Gordon	12/7/12	International	A New 1064 nm Ground-Based LiDAR Instrument for Quantifying Dynamic Glacier Processes; First Results From Helheim Glacier, Southeast Greenland (w/ David Finnegan, Leigh Stearns and Ananda Fowler)	0	0
Hamilton, Gordon	6/4/13	International	Characteristics of retreating tidewater glaciers in Greenland	0	0
Hooke, Roger	2/21/13	Regional	What is the human geomorphic agent doing to the blue marble?	0	0
Jain, Shaleen	May 2013	International	Adaptive Water Policy and Resource Allocation Innovations in a Changing Climate.	1	0
Jain, Shaleen	April 2013	National	Dhakal, N., M. Dandy, and S. Jain, Changing statistics of extreme rainfall in Maine: New analysis and estimation considerations for infrastructure design.	0	1
Kelley, Alice	11/7/12	National	GROUND-PENETRATING RADAR IDENTIFICATION AND CHARACTERIZATION OF AN EARLY MONUMENTAL STRUCTURE, NORTH COAST, PERU	1	0
Kelley, Alice	11/6/12	National	18TH AND 19TH CENTURY COASTAL SAND INUNDATION, SHETLAND UK	1	0
Kelley, Joseph	April 16, 2013	International	Penrose/Chapman Conference, Galveston, TX, Invited Talk, April 15-19, 2013. Sea-level changes in Maine. Kelley, J.T., Belknap, D.F.	0	0
Kelley, Joseph	5/1/2013	State	Wells National Estuarine Research Reserve, 5/1/13, Maine Coastal Habitats for Oil Spill Response Team	0	0
Kelley, Joseph	3/1/2013	State	Geology Department, Colby College, 3/1/13, Maine's Coastal Wetlands: origins and Future with rising sea level	0	0
Kelley, Joseph	8/12/2012	State	Reel Pizza, Bar Harbor, Maine, 8/12/2012; Sea-Level Change; Introduction to film, "Sun Come Up", Sierra Club of Maine	0	0
Kelley, Joseph	7/18/2013	International	Field Trip, Biogeomon, July 18, Sea Level Change on Mt. Desert Island, ME	0	0
Koons, Peter	2013	International	Roy, S.G., Koons, P.O., Tucker, G.E., Upton, P. (2013). The influence of tectonic strain on landscape evolution. CSDMS meeting, Boulder, CO, 2013	1	0
Koons, Peter	2013	Regional	Roy, S.G., Koons, P.O., Tucker, G.E., Upton, P. (2013). The influence of tectonic strain on landscape evolution. Geological Society of America annual conference, Northeastern Section, Bretton Woods, NH, 2013	1	0
Koons, Peter	2013	Regional	Foley, M., Koons, P., Gerbi, C., 2013, Characterizing the 3-D influence of lower crustal localization on the surficial kinematics of an orogen, in GSA Abstracts with Programs, Northeastern GSA Section Meeting, Bretton Woods, NH, March 2013, p. 120	0	0
Kreutz, Karl	March 3, 2013	Regional	Trans-Pacific climate variability over the past millennium	2	0
Kreutz, Karl	Dec. 14, 2012	International	Links between ice-core based records of West Antarctic dust deposition and Pacific-sector dust generation during the LGM and transition	0	0
Mayewski, Paul	25 June 2012	State	Upward Bound, Portland, Maine – "Journey Into Climate"	0	0
Mayewski, Paul	14 July 2012	International	SCAR Portland, Oregon (by Skype) – Antarctic and SH climate variability	0	0

Mayewski, Paul	16 July 2012	International	Camden, Keynote for BIOGEOMON – Climate variability and ice core records	0	0
Mayewski, Paul	24 July 2012	Local	Castine, Maine, Castine Yacht Club – Journey Into Climate Change Institute	0	0
Mayewski, Paul	5 October 2012	International	Punta Arenas, Chile – Univ. Magallenes – Antarctic and SH climate variability	0	0
Mayewski, Paul	13 October 2012	International	King Edward Point British Antarctic Survey Station, South Georgia Island – Antarctic and SH climate variability	0	0
Mayewski, Paul	2 November 2012	International	Stanley, Falkland Islands Government House - Antarctic and SH climate variability	0	0
Mayewski, Paul	28 November 2012	International	Harvard – First millennium Climate Change Institute	0	0
Mayewski, Paul	19 December 2012	National	Deerfield Academy, Mass – Lambert Fellow Annual Talk – Journey Into Climate Change	0	0
Mayewski, Paul	5 February 2013	International	Santiago, Chile – Climate variability and ice cores	0	0
Mayewski, Paul	1 April 2013	National	Harvard – Climate and ice core record	0	0
Mayewski, Paul	2 April 2013	National	Texas AandM (Skype) – Journey Into Climate Change	0	0
Mayewski, Paul	4 April 2013	State	Bowdoin College, First Parish Church Brunswick, Unitarian Universalist Church, Bowdoin, St. Paul’s Episcopal Church Brunswick, United Nations Association of Maine – Journey Into Climate Change	0	0
Mayewski, Paul	16 April 2013	International	Keynote 75th Anniversary American Polar Society at Wood’s Hole, Mass – Journey Into Climate	0	0
Mayewski, Paul	23 April 2013	International	(7) 23 April (Earth Day) – appeared in 230 venues as part of movie “Thin Ice”	0	0
Mayewski, Paul	13 June 2013	International	Webnar for Explorers Club – Journey Into Climate Change Institute	0	0
Mayewski, Paul	18 June 2013	International	Andover, NH – Keynote Gordon Conference – Climate and ice cores	0	0
McGill, Brian	August 2012	National	6 Enquist, BJ 1 , B Boyle 1 , JC Donoghue II 1 , B Thiers 2 , P Jorgensen 3 , BJ McGill 4 , JC Svenning 5 , R Condit 6 , N Morueta-Holme 5 , LL Sloat 1 and T BIEN Working Group 7 , (1)University of Arizona, (2)The New York Botanical Garden, (3)Missouri Botanical Garden, (4) McGill University, (5)Aarhus University, (6)Smithsonian Tropical Research Institute, (7)National Center for Ecological Analysis and Synthesis. The commonness and distribution of rarity: Quantifying the botanical diversity of all plant species in the Americas	3	0
McGill, Brian	August 2012	National	Morueta-Holme, N1 , BJ Enquist 2 , BJ McGill 3 and JC Svenning 1 , (1)Aarhus University, (2)University of Arizona, (3)University of Maine. Patterns and processes behind the range size distributions of the New World plants	1	0
McGill, Brian	October 2012	National	Socially relevant ecology=global change+boundaries	0	0
McGill, Brian	February 2013	International	Macroecology - Successes and failures	0	0
McGill, Brian	April 2013	National	Three unusual views of community assembly	0	0
McGill, Brian	January 2013	International	The commonness and distribuion of rarity: Quantifying the botanical diversity of all plant species in the Americas Brian J. Enquist 1,8,9,10 , Brad Boyle 1,8,9 , John C. Donoghue II 1,8,9 , Barbara Thiers 2,8 , Peter Jorgensen 3,8 , Brian J.	1	0

			McGill 4,8 , Jens-Christian Svenning 5,8 , Richard Condit 6,8 , Naia Morueta-Holme 5,8 , Lindsey L. Sloat 1,8 , Robert Peet 7,8 and The BIEN Working Group 8		
McGill, Brian	Jan 2013	International	Incorporating satellite derived cloud climatologies to improve high resolution interpolation of daily precipitation Adam M. Wilson 1 , Benoit Parmentier 2 , Brian McGill 3 , Robert Guralnick 4 and Walter Jetz 1	0	0
McGill, Brian	January 2013	International	Assembly of plant communities in climate space Benjamin Blonder 1,2,3 , David Nogués-Bravo 2 , Carsten Rahbek 2 , Brian J. Enquist 1,3,4 , Brad Boyle 1,3 , John Donoghue 13 , Richard Condit 3,5,6 , Robert K Peet 3,7 , Steven Dolins 3,8 , Mark Schildhauer 3 , Barbara Theirs 3,9 , Brian McGill 3,10 , Peter Jorgenson 3,11 , Martha Narro 3,12 , Jim Regetz 3 , Cyrille Violle 1,3,13 , Irena Simova 3,14 , Lindsey Sloat 1,3 , Bill Piel 3,15 , Nathan Kraft 3,16 , Jens-Christian Svenning 3,17 , Naia Morueta-Holme 3,17 , Nick Spensor 3,18 , Susan Wisser 3,18 , Jef Ott 3,7 , Barbara Dobrin 1,3 , Sandy Andelman 3,19 and Krisine Engemann Jensen	2	0
McGill, Brian	Jan 2013	International	Global species richness patterns and their drivers among the order Anseriformes Lars Dalby 1,4 , Brian J. McGill 2 , Anthony David Fox 3 and Jens-Christian Svenning 4	1	0
McGill, Brian	January 2013	International	Quantifying the fundamental unit of biogeography: Assessing different methods to measure geographic range size and why it matters John C Donoghue II 1 , Naia Moreta-Home 2 , Brad Boyle 3 , Lindsey L. Sloat 4 , Brian J. Enquist 5 , Brian J. McGill 6 , Jens-Christian Svenning 7 and The BIEN Working Group 8	1	0
McGill, Brian	January 2013	International	Climate interpolation of daily maximum temperature: improvements for the production of climate datasets Benoit Parmentier 1 , Brian McGill 2 , Jim Regetz 1 , Adam Wilson 3 , Walter Jetz 3 , Robert Guralnick 4 , Mark Schildhauer 1 and Martha Narro 5	0	0
Olsen, Brian	April 2013	Regional	McCabe, J. D. and B. J. Olsen. A validated model for migratory stopover distribution in North America: identifying generalizable predictors of site use	1	0
Olsen, Brian	April 2013	Regional	Grunzel, D. and B. J. Olsen. Behavior and timing of fall migrant songbirds	1	0
Olsen, Brian	March 2013	Regional	Elphick, C., C. Field, B. J. Olsen, T. P. Hodgman, W. G. Shriver. The ability of tidal marshes to maintain vertebrate biodiversity is slipping: Is human mitigation possible?	1	0
Olsen, Brian	October 2012	Regional	Elphick, C., B. J. Olsen, W. G. Shriver (all presented). The Saltmarsh Habitat and Avian Research Program	0	0
Olsen, Brian	October 2012	State	McCabe, J. D. and B. J. Olsen. Defining critical habitat for migratory songbirds in the Downeast coastal region of Maine	1	0
Olsen, Brian	October 2012	State	Olsen, B.J., D.C. Evers, and A.J. Byrd. Toxin load decreases the capacity of Common Loons to adapt to climate change	1	0
Olsen, Brian	August 2012	International	Byrd, A.J., B. J. Olsen, and D. Evers. Common Loon (<i>Gavia immer</i>) biogeography and reproductive success in an era of climate change	1	0
Olsen, Brian	August 2012	International	Correll, M., B.J. Olsen, and T. Hodgman. Predicting tidal marsh bird populations via remote sensing: A potential tool for coastal conservation	1	0
Olsen, Brian	August 2012	International	Culp, L., K. O'Brien, T. Hodgman, B. J. Olsen, and W. Glanz. Roads in salt marshes: Flooding, vegetation and Sharp-tailed Sparrow habitat quality in tidally restricted marshes	1	0
Olsen, Brian	August 2012	International	McCabe, J. D. and B. J. Olsen. Defining critical habitat for migratory songbirds in the Downeast coastal region of Maine	1	0
Olsen, Brian	August 2012	International	Olsen, B.J., D.C. Evers, and A.J. Byrd. Toxin load decreases the capacity of Common Loons to adapt to climate change	1	0

Olsen, Brian	August 2012	International	Robertson, E.P. and B.J. Olsen. Density, breeding stage, and sex affect rail broadcast survey results	1	0
Olsen, Brian	August 2012	International	Ruskin, K.J. and B.J. Olsen. Testing for stability in the Sharp-tailed Sparrow hybrid zone: 130 years of plumage comparisons	1	0
Olsen, Brian	December 2012	Local	Why do birds sing?	0	0
Olsen, Brian	March 2013	University	Avian Adaptive Capacity on a Changing Planet: How much is too much?	4	0
Olsen, Brian	May 2013	Local	The birds of Orono Bog	0	0
Robinson, Brian S.	October 2012	Local	Archaeology of Seventeenth Century Acadian Settlements in Maine and Canada: Tumultuous Times, Presented at Dirigo Pines, Orono	0	0
Robinson, Brian S.	August 2012	Local	Machias Bay Petroglyph Project and the University of Maine Field School, Abbe Museum fieldschool presentation, Ellsworth, Maine	0	0
Robinson, Brian S.	April 2013	State	Bull Brook Excavations: Networking with the Massachusetts Archaeological Society, the Robert S. Peabody Foundation and Beyond	0	0
Robinson, Brian S.	Sept. 2012	Local	Machias Bay Petroglyph Project and the University of Maine Field School	0	0
Roscoe, Paul B.	February 2013	National	War and the Food Quest: Implications for New Guinea Settlement Patterns. Conference: The Archaeology of Food and Warfare. University of California, Santa Barbara	0	0
Roscoe, Paul B.	November 2012	Regional	A Changing Climate for Anthropological Research. Anthropology Department, Dartmouth College	0	0
Roscoe, Paul B.	April 2013	National	Foragers and War in Contact-era New Guinea. Conference: Annual meetings of the Society for American Archaeology	0	0
Sandweiss, Dan	Sept 2012-Mar 2013	Regional	The Archeology of El Niño: Climate and Culture in Ancient Peru. Colby College, Waterville ME	0	0
Sandweiss, Dan	February 20, 2013	Local	Incidents of Travel in Latin America: An Archaeologist's Images. Gallery Program Lecture, Hudson Museum, University of Maine	0	0
Sandweiss, Dan	March 29, 2013	Local	Speaker in "Far Afield: How To Weave Your Fieldwork Into Your Teaching" Panel sponsored by CETA, University of Maine	0	0
Sandweiss, Dan	April 4, 2013	International	Discussant. Symposium on New Approaches to the Archaeological and Bioarchaeological Study of South American Hunter-Gatherer Societies	0	0
Sandweiss, Dan	April 15, 2013	International	Invited Opening Keynote: Long-term Human Ecodynamics in the Heartland of El Niño: Climate and Culture on the Coast of Peru	0	0
Sandweiss, Dan	April 17, 2013	International	Peruvian Beach Ridges: El Niño, Landscape Alteration, and Population Dynamics since the Mid-Holocene. Co-author: Daniel F. Belknap	0	0
Sandweiss, Dan	April 24, 2013	Local	Advice for the 10%. Keynote speech at the University of Maine Chapter of the Phi Kappa Phi Honor Society Induction Ceremony	0	0
Sandweiss, Dan	May 4, 2013	Regional	Early Occupation of Southern Peru: Chronology, Settlement Pattern, and Interregional Interaction in the Terminal Pleistocene. With Kurt M. Rademaker	0	0

Sandweiss, Dan	June 5, 2013	International	Long-term Human Ecodynamics in the Heartland of El Niño: Climate and Culture on the Coast of Peru	0	0
Saros, Jasmine	July 2012	International	Strock, K.E.D., J.E. Saros & S.J. Nelson. Analyzing legacy data in a climate context to decipher modern changes in lakewater chemistry	1	0
Saros, Jasmine	August 2012	International	Strock, K.E.D., J.E. Saros, M.B. Edlund & D.R. Engstrom. Climate-mediated changes in boreal lakes: A diatom-based reconstruction of changes in lake thermal stratification	1	0
Saros, Jasmine	August 2012	International	Saros, J.E. & J.R. Stone. Reconstructing climate-driven changes in lake thermal structure in alpine regions	0	0
Saros, Jasmine	August 2012	International	Wigdahl, C.R., J.E. Saros, J.R. Stone & S.C. Fritz. Low coherence among diatom-inferred salinity records across the Great Plains (USA): the role of climate-induced changes in planktic versus benthic habitat	1	0
Saros, Jasmine	August 2012	International	Saros, J.E. Dissolved organic matter as a resource subsidy for phytoplankton in lake ecosystems. Organized oral session, "Global Browning of Inland Waters: Implications of Changing Terrestrial Dissolved Organic Carbon Concentrations for Aquatic Ecosystems"	0	0
Saros, Jasmine	August 2012	International	Spaulding, S.A. & J.E. Saros. Historical distributions and modern invasions: <i>Didymosphenia geminata</i> in the western mountains of the US	0	0
Saros, Jasmine	February 2013	International	Saros, J.E., Strock, K.E. & H. Malik. Climate-induced changes in lake thermal structure and productivity inferred from paleolimnological reconstructions. Special session, "Assessing vulnerability of US lakes and reservoirs to climate change"	2	0
Saros, Jasmine	February 2013	International	Warner, K.A., J.E. Saros & K.S. Simon. Nitrogen subsidies in glacial meltwater: implications for high elevation aquatic chains	1	0
Saros, Jasmine	February 2013	International	Strock, K.E., J.E. Saros, S.J. Nelson & S.D. Birkel. The effects of extreme climate events on lakewater chemistry: implications for dissolved organic carbon trends in the northeast US	1	0
Saros, Jasmine	February 2013	International	Slemmons, K.E.H. & J.E. Saros. Implications of nitrogen-rich glacial meltwater for phytoplankton diversity and productivity	1	0
Saros, Jasmine	March 2013	State	Strock, K.E., J.E. Saros, and S.J. Nelson. The effects of extreme climate events on lakewater chemistry: implications for "brownification" in Maine lakes	1	0
Schauffler, Molly	3/7/2013	Regional	The Acadia Learning Data Literacy Project: a framework for using data in middle and high school science teaching	1	0
Sorg, Marcella	August, 2012	National	Biological Clocks	0	0
Sorg, Marcella	November, 2012	National	Issues in Regional Taphonomy	0	0
Sorg, Marcella	January, 2013	National	Drug Abuse Patterns and Trends: Report from Maine, January, 2013	0	0
Sorg, Marcella	February 2013	International	Regional and Micro-Environmental Taphonomic Variation and Decomposition in Northern New England	1	0
Sorg, Marcella	February, 2013	International	Developing Frameworks for Regional Forensic Taphonomy Research and Practice: A Multi-Regional Symposium	0	0
Sorg, Marcella	April, 2013	Other/Special	Climate Impacts on Decomposition in Forensic Taphonomy: A Pilot Study	0	0
Sorg, Marcella	April, 2013	State	Drug Abuse Indicators Update for Maine, Kennebec County, and Somerset County	0	0

Sorg, Marcella	September, 2012	National	National Association of Medical Examiners and NVDRS	0	0
Sorg, Marcella	May, 2013	International	Report from Maine: Substance Abuse Indicators and Trends	0	0
Sorg, Marcella	May, 2013	State	Drug Abuse Indicators Update for Maine, Cumberland County, and Portland	0	0
Sorg, Marcella	June, 2013	National	Drug Abuse Patterns and Trends, Report from Maine, June 2013	0	0
Sorg, Marcella	June, 2013	National	Utilizing Drug Death Data: Issues in Cross-Jurisdiction Analysis	0	0
Thaler, Jeffrey	August 10, 2012	International	Experiential Education Over 40 Years: Georgia, Iowa, Somalia, Cambodia	0	0
Thaler, Jeffrey	September 12, 2012	State	As the World Burns: From Climate Science to Renewable Energy Policy and Justice	0	0
Thaler, Jeffrey	March 2, 2013	International	“How to Slow Climate Change, and Protect Local Ecosystems and Communities Without Conflict” http://ytsqts.law.yale.edu:8080/qtmedia/events13/NDEL_Panel2_030213_s.mov	0	0
Thaler, Jeffrey	April 11, 2013	State	“Neither Here Nor There in a Changing America: Perspectives on Immigration from the Williams Community and Maine”	0	0
Thaler, Jeffrey	April 24, 2013	International	“Are Our Environmental Laws Obsolete or Unhelpful in a Carbon Stressed World?” Presentation at Univ. of Minnesota Conference on Legal & Policy Pathways for Energy Innovation, Minneapolis, MN http://www.lawvalue.umn.edu/newsevents/conferences/lppei/agenda/home.html	0	0
Thaler, Jeffrey	May 30, 2013	International	“America’s Environmental Laws: Are They Obsolete in a Climate Changed World?” Presentation at the ABA’s 16th Natural Resources Law Teachers Institute, Flagstaff, AZ http://www.rmmlf.org/confnce/NRLT13news.pdf	0	0
West, Catherine	November 2012	International	West, Catherine F. and C. Fred T. Andrus 2012 Paleoenvironmental Reconstruction in the Kodiak Archipelago: A Perspective from Arctic Archaeology. Symposium entitled "Advances in Sclerochronology" organized by Fred Andrus and Donna Surge, presented at the annual meeting of the Geological Society of America, Charlotte, NC	0	0
West, Catherine	April 2013	International	West, Catherine F. and C. Fred T. Andrus High Resolution Sampling of Saxidomus gigantea in the Kodiak Archipelago, Alaska. Symposium entitled "Small Samples, Big Questions: New Methods and Applications in Biomolecular Archaeology" organized by A. Henry, C. Hofman, and C. Warriner. Presented at the 2013 meeting of the Society for American Archaeology, Honolulu, HI	0	0
West, Catherine	April 2013	Local	Dunning, Samantha, Catherine West, and Courtney Hofman. 2012. Biogeography and History of the Chirikof Island Ground Squirrel. Center for Undergraduate Research Showcase, University of Maine	1	1
Zaro, Gregory D.	February 22, 2013	Local	Center for Interdisciplinary Marine and Maritime Research (CIMMAR) Lecture Series, “The archaeology of environmental change: Current challenges and opportunities in the interdisciplinary study of humans and the environment.” University of Zadar, Croatia, February 22, 2013	0	0
Zaro, Gregory D.	April 22, 2013	Regional	Zadar Festival of Science Earth Day Lecture, “Environmental Change and Human Agency: Archaeological contributions to understanding past, present, and future landscapes.” University of Zadar, Croatia, April 22, 2013	0	0
Zaro, Gregory D.	July 3, 2012	International	Sullivan, Lauren A., Brett A. Houk, and Gregory Zaro (2012). Deciphering a Terminal Classic Surface Artifact Deposit at Courtyard 100, La Milpa: The View from the Ceramic Data. Paper presented at the 10th Annual Meeting of the	0	0

Belize Archaeology Symposium, San Ignacio, Belize

Zaro, Gregory D.	April 13, 2013	National	Houk, Brett A., Gregory Zaro, Brendan J. Culleton, and Douglas J. Kennett (2013). All our yesterdays: Alternative histories of La Milpa, Belize. Paper presented at the 78th Annual Meeting of the Society for American Archaeology, Honolulu, HI, April 6, 2013	0	0
------------------	----------------	----------	--	---	---

CONFERENCES/SYMPOSIA/MEETINGS ATTENDED: INTERNATIONAL/NATIONAL/REGIONAL/STATE/LOCAL

Name	Date	Scope	Conference	Location	GS	US
Belknap, Daniel F.	07/18/2012	International	BIOGEOMON Conference and Field Trips, 07/18/12	Northport and Mt. Desert Island, ME	0	0
Belknap, Daniel F.	11/04 -07/12	International	Geological Society of America Annual Meeting	Charlotte, NC	2	0
Belknap, Daniel F.	11/11 – 14/12	State	Invited Talk, Iowa State University Department of Geology and Atmospheric Sciences	Iowa State, Ames, IO	0	0
Belknap, Daniel F.	03/17 - 21/13	Regional	Geological Society of America Northeast Section Meeting	Bretton Woods, NH	3	0
Belknap, Daniel F.	04/07 - 10/13	International	Submerged Paleolandscapes Workshop BOEM	University of Rhode Island, Bay Campus, Narragansett, RI	0	0
Belknap, Daniel F.	04/10/2013	State	Geological Society of Maine Spring Meeting	University of Maine, Farmington, ME	3	0
Belknap, Daniel F.	04/11/2013	Regional	New England Estuarine Research Society Annual Meeting	Portland, ME	0	0
Belknap, Daniel F.	07/18/2012	International	BIOGEOMON Conference and Field Trips, 07/18/12	Northport and Mt. Desert Island, ME	0	0
Fernandez, Ivan	July 2013	International	BIOGEOMON 2012	Northport, Maine	0	0
Fernandez, Ivan	October 2012	International	Soil Science Society of America Convention	Cincinnati, Ohio	0	0
Hall, Brenda	Sept. 2012	National	Comer Abrupt Climate Change Meeting	Soldiers Grove, Wisconsin	0	0
Hall, Brenda	June 2012	National	Transantarctic Mountains Workshop	Indianapolis, Indiana	0	0
Hamilton, Gordon	July 2012	National	NSF Transantarctic Mountains Science Planning Workshop	Indianapolis	0	0
Hamilton, Gordon	Sept. 2012	National	NASA Snow Accumulation Workshop	Goddard Space Flight Center, Greenbelt	0	0
Hamilton, Gordon	December 2012	International	American Geophysical Union Fall Meeting	San Francisco	0	0
Hamilton, Gordon	June 2013	International	CLIVAR Workshop on Greenland Ice Sheet-Ocean Interaction	Boston	0	0
Hooke, Roger	Nov. 3-9, 2012	National	Geological Society of America Annual Meeting	Charleston, NC	0	0
Hooke, Roger	March 18-20, 2013	Regional	Geological Society of America Northeastern Section Annual Meeting	Bretton Woods, NH	0	0
Kelley, Alice	11/4-7/13	National	Geological Society of America	Charlotte NC	1	0

			http://www.geosociety.org/meetings/2012/			
Kelley, Alice	11/9/12	State	Maine Metallic Minerals Conference	Orono, Maine	0	0
Kelley, Alice	3/18-20/13	Regional	Northeastern Region Geological Society of America Meeting http://www.geosociety.org/Sections/ne/2013mtg/	Bretton Woods, NH	0	0
Kelley, Alice	4/22-23/13	Local	Annual Borns Symposium http://climatechange.umaine.edu/harold_w_borns_jr_symposium_abstracts	Orono, Maine	2	0
Kelley, Joseph	11/3/12 - 11/7/12	International	Geological Society of America Annual meeting	Charlotte, NC	1	0
Kelley, Joseph	3/18/13 - 3/20/13	Regional	Northeast Geological Society of America	Bretton Woods, NH	2	0
Kelley, Joseph	4/15/13 - 4/19/13	International	Penrose/Chapman Conference	Galveston, TX	0	0
Kelley, Joseph	5/29/13	Regional	Royal Geographic Society Meeting	Belfast, Northern Ireland	0	0
Kreutz, Karl	Oct. 5 2012	National	WAIS Divide ice core meeting	San Diego CA	1	0
Kreutz, Karl	Dec. 14 2012	International	American Geophysical Union Fall Meeting	San Francisco CA	1	0
Kreutz, Karl	March 3, 2013	Regional	NE Geological Society of America meeting	Bretton Woods, NH	1	0
Kurbatov, Andrei	3/19/2013	National	South Pole Ice Core Planning Workshop	Boulder, CO	0	0
Kurbatov, Andrei	12/3-12/7/2012	International	American Geophysical Union Fall 2012 meeting http://sites.agu.org	San Francisco, CA	0	0
Kurbatov, Andrei	12/9-12/12/2012	National	WAIS Divide Ice Core 2012 Science Meeting http://www.waisdivide.unh.edu/	La Jolla, CA	0	0
Kurbatov, Andrei	June 11-14, 2013	Other/Special	NCL Workshop at the CTTC http://www.ncl.ucar.edu/Training/Workshops/	Boulder, CO	0	0
McGill, Brian	August 2012	International	Ecological Society of America	Portland, OR	2	0
McGill, Brian	July 2012	International	Gordon Conference on Metabolic Ecology	Biddeford, ME	2	0
McGill, Brian	September 2012	International	Influence of Ecological Interactions on Evolution of Species Ranges - DIVERSITAS	Montreal	0	0
McGill, Brian	October 2012	International	Rural forests communities at a tipping point? trends and actionable research opportunities	Annapolis, MD	0	0
McGill, Brian	May 2013	National	Rural forests communities at a tipping point? trends and actionable research opportunities	Annapolis, MD	0	0
McGill, Brian	May 2013	International	Workshop on timeseries analysis of community	Scotland, UK	0	0
Olsen, Brian	August 2012	International	5th Quadrennial North American Ornithological Conference.	Vancouver, British Columbia, Canada.	6	0

Olsen, Brian	October 2012	Regional	Bridging the Implementation Gap: Bird Conservation Conference in the Northeast	Plymouth, Massachusetts.	3	0
Olsen, Brian	March 2012	Regional	48th Annual Meeting of the Geological Society of North America, Northeast Section	Bretton Woods, New Hampshire	0	0
Olsen, Brian	April 2013	Regional	3rd Annual Northeast Regional Migration Monitoring Network Meeting	Winter Harbor, Maine	3	0
Olsen, Brian	May 2013	Regional	Conservation strategies for the Saltmarsh Sparrow	Newburyport, Massachusetts	0	0
Roscoe, Paul B.	February	National	Archaeology of Food and War conference	Santa Barbara, CA	0	0
Roscoe, Paul B.	April 2013	International	Annual Conference of the Society for American Archaeology	Honolulu, HI	0	0
Sandweiss, Dan	October 10-11, 2012	Regional	31st Northeast Conference on Andean Archaeology and Ethnohistory http://caralperu.typepad.com/ncaae/	Boston University, Boston MA	1	0
Sandweiss, Dan	November 26-27, 2012	International	The Global Financial Crisis and Future Outlook Conference	Emirates Center for Strategic Studies and Research, Abu Dhabi UAE	0	0
Sandweiss, Dan	December 5-8, 2012	International	52nd Annual Meeting of the Council of Graduate Schools http://www.cgsnet.org/council-graduate-schools-52nd-annual-meeting	Washington DC	1	0
Sandweiss, Dan	February 11-12, 2013	National	National Science Foundation ArcSEES Panel	Arlington VA	0	0
Sandweiss, Dan	April 3-7, 2013	International	78th Annual Meeting of the Society for American Archaeology http://www.saa.org/AbouttheSociety/AnnualMeeting/Abstracts2013/tabid/1497/Default.aspx	Honolulu HI	0	0
Sandweiss, Dan	April 15-18, 2013	International	International Open Workshop "Socio-Environmental Dynamics over the Last 12,000 Years: The Creation of Landscapes III" http://www.workshop-gshdl.uni-kiel.de/	Kiel University, Kiel, Germany	0	0
Sandweiss, Dan	May 4, 2013	Regional	YAMAHA (Yale-Maine-Harvard) Andean Group	Harvard University, Cambridge MA	1	0
Sorg, Marcella	August, 2012	National	New England Seminar in Forensic Sciences	Waterville, ME	0	0
Sorg, Marcella	September, 2012	National	National Violent Death Reporting System Reverse Site Visit	Atlanta, GA	0	0
Sorg, Marcella	October, 2012	National	National Association of Medical Examiners	Baltimore, MD	0	0
Sorg, Marcella	November, 2012	Regional	National Center for Missing and Exploited Children Case Seminar	Arlington, VA	0	0
Sorg, Marcella	January, 2013	National	Community Epidemiology Work Group, National Institute on Drug Abuse	Albuquerque, NM	0	0
Sorg, Marcella	February, 2013	National	American Academy of Forensic Sciences	Washington, DC	0	0
Sorg, Marcella	April, 2013	National	Federation of State Medical Boards	Boston, MA	0	0
Sorg, Marcella	April, 2013	Other/Special	Borns Symposium, Climate Change Institute	Orono, ME	0	0

Sorg, Marcella	May, 2013	International	Canadian Community Epidemiology Network on Drug Use	Toronto, Canada	0	0
Sorg, Marcella	May, 2013	State	Maine Community Epidemiology Work Group	Augusta ME	0	0
Sorg, Marcella	June, 2013	National	Community Epidemiology Work Group, National Institute on Drug Abuse	St. Louis	0	0
Thaler, Jeffrey	July 19-20, 2012	National	Energy Law Professors' Workshop on Pedagogy and Issues	Vermont Law School	0	0
Thaler, Jeffrey	August 9-11, 2012	International	Experiential Education and Bhutanese Sustainability Programming	Ashburnham, Massachusetts	0	0
Thaler, Jeffrey	September 15, 2012	State	E2Tech U.S. Senate Candidate Debate on Energy and Environmental Issues	USM, Portland Maine	8	0
Thaler, Jeffrey	September 20, 2012	State	E2Tech 10th Anniversary Forum	Portland, ME	0	0
Thaler, Jeffrey	October 25, 2012	State	E2Tech Electric and Natural Gas Powered Vehicles	South Portland, ME	0	0
Thaler, Jeffrey	March 2, 2013	International	New Directions in Environmental Law Conference http://y1sqts.law.yale.edu:8080/qtmedia/events13/NDEL_Panel2_030213.s.mov	Yale Law School	0	0
Thaler, Jeffrey	April 24-25, 2013	International	Univ. of Minnesota Conference on Legal & Policy Pathways for Energy Innovation http://www.lawvalue.umn.edu/newsevents/conferences/lppei/agenda/home.html	Minnesota Law School	0	0
Thaler, Jeffrey	May 30, 2013	International	ABA Institute for Natural Resources Law Teachers http://www.rmmlf.org/confnrc/NRLT13news.pdf	Flagstaff, AZ	0	0
West, Catherine	November 2012	International	Geological Society of America	Charlotte, NC	0	0
West, Catherine	April 2013	International	Society for American Archaeology	Honolulu, HI	0	0
West, Catherine	April 2013	Local	Center for Undergraduate Research Showcase	University of Maine	0	1
West, Catherine	April 2013	Local	CCI Borna Symposium	University of Maine	0	0
Zaro, Gregory D.	October 20-21, 2012	Regional	Northeast Conference on Andean Archaeology and Ethnohistory	Boston University, Boston, MA	0	0

RESEARCH EXPEDITIONS & FIELD TRIPS

Name	Date	Description	GS	US
Belknap, Daniel F.	June 1-6, 2013	National Environmental Research Council (UK). Sea Level Minima project, Celtic and Irish Seas, co-PI's from University of Ulster, Coleraine, Northern Ireland, British Geological Survey, Durham University (UK), and Irish Geological Survey. Third year conference on results of previous two field expeditions. Durham University, UK	0	0

Denton, George	January- March, 2013	NSF-funded field work in the Southern Alps of New Zealand. Project carried out in collaboration with Columbia University and GNS-Science of New Zealand.	3	0
Denton, George	April, 2013	NSF-funded field research in Terra del Fuego and Cordillera Darwin in southern Patagonia.	1	1
Hall, Brenda	January-February 2013	Paleontological field work in Antarctica.	2	2
Hall, Brenda	March-April 2013	Glacial geologic field work in Patagonia.	1	1
Hall, Brenda	May 2013	Travel to use specialized equipment for research purposes, University of Oxford, UK	0	0
Hall, Brenda	October 2012	Glacial geologic field work in western Maine and New Hampshire	0	0
Hamilton, Gordon	July 2012	West Greenland	1	0
Hamilton, Gordon	September 2012	East Greenland	1	0
Hamilton, Gordon	October 2012	Antarctica	0	0
Hamilton, Gordon	February 2013	Antarctica	1	0
Hamilton, Gordon	May 2013	West Greenland	1	0
Hamilton, Gordon	June 2013	West Greenland	1	0
Hooke, Roger	November 3, 2013	Field trip to the Blue Ridge escarpment, NC, in conjunction with Geological Society of America Annual Meeting	0	0
Hooke, Roger	November 7, 2012	Field trip to study river terraces and legacy sediments near Charleston, NC, in conjunction with Geological Society of America Annual Meeting	0	0
Hooke, Roger	November 8-9, 2012	Field trip to Congaree National Park, NC, in conjunction with Geological Society of America Annual Meeting	0	0
Hooke, Roger	December 29, 2012 - January 21, 2013	Geological Society of America 125th Anniversary trip to the Falkland Islands, S. Georgia, and the Antarctic Peninsula	0	0
Hooke, Roger	March 17, 2013	Field trip to study glacial features near Bretton Woods, NH, in conjunction with Geological Society of America Northeastern Section Annual Meeting	0	0
Kelley, Alice	5/22-6/12	Shetlands: NSF-funded examination of coastal response to abrupt climate change. Investigation of rapid 18th and 19th century sand inundation of coastal region	1	0
Kelley, Alice	6/15-7/31/12	Surficial mapping of the Mt. Snow 7.5' Quadrangle, Maine	0	0
Kelley, Alice	8/1-13/12	Preliminary investigations, north coast Peru for NSF-funded examination of the linkage between El Nino and cultural change in prehistoric Peru. Collaborators from UMaine, Harvard Univ, and Yale Univ.	0	0
Kelley, Alice	12/7-14/13	North coast Peru: Visit graduate student, Cecilia Mauricio at field site	1	0
Kelley, Joseph	4/17/13	Field trip to see storm damage on Galveston Island, TX	0	0
Kreutz, Karl	July 1-4, 2012	Denali National Park	2	2
Kreutz, Karl	April 29, 2013	Denali National Park	2	0

Kreutz, Karl	Sept. 10, 2012	Gulf of Maine	0	0
Mayewski, Paul	October 2012	Leader Kuli South Georgia Expedition - 2 graduate students, one post-doc, sub-Antarctic Southern Ocean	2	0
Mayewski, Paul	February 2013	Chilean Andes, two graduate students, one post-doc	2	0
Olsen, Brian	Summer 2012	Sparrow demographics work, Scarborough Marsh, Maine	2	2
Olsen, Brian	Summer 2013	Sparrow demographics work, Scarborough Marsh, Maine	1	4
Olsen, Brian	Summer 2012	Tidal marsh surveys from Maine to New Jersey	1	0
Olsen, Brian	Summer 2013	Tidal marsh surveys from Maine to New Jersey	1	0
Olsen, Brian	Aug – Oct 2012	Bird migration monitoring in Acadia National Park and Cros Island, Maine		
Robinson, Brian S.	June, 2012	University of Maine Field School at Machias, Four week field school with twelve undergraduates and two Graduate students	2	12
Sandweiss, Dan	July 30-Aug.16, 2012	PHEP (Peruvian Human Eco-Dynamics Project) Exploratory Field Season, North Coast of Peru (NSF-funded)	2	0
Saros, Jasmine	July 15-30, 2012	Fieldwork on alpine lakes and streams in the Montana Rocky Mountains	3	1
Saros, Jasmine	December 5-18, 2012	Fieldwork in alpine lakes and streams of New Zealand	0	0
Saros, Jasmine	May 29-June 28, 2013	Fieldwork on lakes in southwest Greenland	2	0
West, Catherine	May-July 2013	I will be participating in two field projects in the summer of 2013: a) Old Harbor, Alaska archaeological excavation funded by the Old Harbor Native Corporation b) Chirikof Island, Alaska archaeological excavation funded by my National Geographic Explorer's Grant	0	1
West, Catherine	February 2013	With funding from UMaine CETA, I took 3 undergraduates (Kendra Bird, Samantha Dunning, and Evan McDuff) to Harvard University's Museum of Comparative Zoology for a 2 day trip. There, they met with zooarchaeologist Dr. Kristine Bovy of the University of Rhode Island and the MCZ collections managers to identify sea bird bones from our collection of Aleutian archaeological material. The students stayed 2 nights in Cambridge, MA.	0	3
Zaro, Gregory D.	Jan 23-Aug 23, 2013	Fulbright Scholar Program, Croatia: Interdisciplinary approaches to landscape evolution and cultural dynamics / Landscape evolution and resource management along the Eastern Adriatic (lecture/research), University of Zadar, Croatia	0	0
Zaro, Gregory D.	August 4-10, 2012	Carumas Valley Archaeological Project, Peru, Preliminary Visit	0	0
Zaro, Gregory D.	October 3-8, 2012	Carumas Valley Archaeology Project, Peru, Preliminary Visit (Estagagache Site)	0	0

OTHER INDICATORS

Name	Description
Belknap, Daniel F.	Frequent requests by e-mail and phone to answer research-related questions by professionals and general public. 2-hour discussion (unpaid) with representative of Offshore Wind project to be sited off Boothbay Harbor, discussing our existing data and interpretations.

Sorg, Marcella Have been invited to serve on the Maine Prescription Drug Monitoring Advisory Board, Office of Substance Abuse, Dept. of Health and Human Services
 Have been invited to serve as a full member of the National Institute on Drug Abuse Community Epidemiology Work Group after participating for 8 years as an invited guest scientist.

MEDIA PRESENTATIONS CREATED

Name	Type	Description	GS	US
Fernandez, Ivan	K-12 Curriculum	Curriculum materials for K-12 on Nitrogen in Watersheds. Used in 2013 by 6 schools in 3 states. http://participatoryscience.org/	0	0
Fernandez, Ivan	Conference Web Site	The BIOGEOMON 2012 web site with available conference abstract book, pictures, and other information. http://www3.villanova.edu/conferences/biogeomon/	0	0
Fernandez, Ivan	Project Web Site	Web site for the Bear Brook Watershed in Maine http://www.umaine.edu/bbwm/	0	0
Kurbatov, Andrei	Web site	Antarctic tephra data base project http://cci.um.maine.edu/AntT/	0	0
Kurbatov, Andrei	Web site	Keck Laser Ice Facility http://cci.um.maine.edu/KLIF/	3	0
Kurbatov, Andrei	Web site	RICE (Roosevelt Island Climate Evolution) Project http://cci.um.maine.edu/RICE/	2	0
Mayewski, Paul	21 July 2012	Bangor, Maine – Forbidden America interview re climate change	0	0
Mayewski, Paul	5 October 2012	Punta Arenas, Chile – Punta Arenas newspaper – Antarctic and SH climate variability	0	0
Mayewski, Paul	2 November 2012	Stanley, Falkland Islands TV - Antarctic and SH climate variability	0	0
Mayewski, Paul	February 2013	Field filming for a new prime time Showtoime TV climate series - "The Year's Project"	0	0
Mayewski, Paul	2 November 2013	Stanley, Falkland Islands Newspaper - Antarctic and SH climate variability	0	0
Mayewski, Paul	24 January 2013	MPBN – Journey Into Climate Change	0	0
Mayewski, Paul	23 April 2013	(2) 23 April (Earth Day) – appeared in 230 venues as part of movie “Thin Ice”	0	0
Mayewski, Paul	13 June 2013	Webnar for Explorers Club – Journey Into Climate Change	0	0

CREATIVE ACTIVITIES

Name	Type	Date	Scope	Description	GS	US
Sandweiss, Dan	Exhibition	Jan-Aug, 2013	Local	Single-artist photographic exhibit: "Incidents of Travel in Latin America: An Archaeologist's Images." Hudson	0	0

SERVICE – TO PROFESSION/DEPARTMENT/COLLEGE/UNIVERSITY SYSTEM/STATE GOVERNMENT AGENCIES/GENERAL PUBLIC & LOCAL COMMUNITIES/PRE-K-12 EDUCATION

To Profession:

Name	Type	Description
Belknap, Daniel F.	Advisory Board	Wells National Estuarine Research Reserve, Laudholm Farm, Wells, ME. Member of Reserve Management Authority. Quarterly meetings and frequent e-mail interactions on policy and management.
Belknap, Daniel F.	Advisory Board	Search Committee for new Research Director, Wells National Estuarine Research Reserve, Wells, ME. Approx. 24 hrs Jan. and Feb, 2013, plus 375 mi roundtrips on 6 occasions.
Belknap, Daniel F.	Discussant	Invited participant in workshop at University of Rhode Island for Submerged Paleolandscapes research project, April 7-10, 2013.
Belknap, Daniel F.	Editorship	Newsletter Editor, Geological Society of Maine, 1999 through 2012. Three times per year newsletter, also coordinated and compiled abstracts for student talks at Spring Meeting. Ex officio member of GSM Executive Board.
Chai, Fei	Advisory Board	International Advisory Committee for the State Key Lab at the Xiamen University, China
Chai, Fei	Advisory Board	International Advisory Committee For a 973 Research Project at the Ocean University of China.
Chai, Fei	Conference Section Chair	8th Cross-Strait Conference on Marine Research in Taiwan.
Chai, Fei	Editorial Board	Biogeosciences.
Chai, Fei	Editorial Board	Acta Oceanologica Sinica.
Chai, Fei	Program Committee Member	The in situ iron studies (ISIS) Consortium
Chai, Fei	Editorial Board	Journal of Oceanography
Chai, Fei	Program Committee Member	Organizing Committee Member for the Ocean Science Meeting 2014
Chawathe, Sudarshan S.	Professional Association Officer	1/2005–present. IEEE Intelligent Transportation Systems Society (ITSS). Member of the Board of Governors.
Chawathe, Sudarshan S.	Award Committee Member	2/2007–present. IEEE Intelligent Transportation Systems Society (ITSS). Member, Dissertation Award Committee.
Chawathe, Sudarshan S.	Professional Association Committee	10/2008--present. ITSS Award Selection Committee for IEEE ITSS Best Practice Award for Engineers.
Chawathe, Sudarshan S.	Editorship	Associate Editor, IEEE Transactions on Intelligent Transportation Systems.

Fernandez, Ivan	Panel Chair	Member – US Environmental Protection Agency Advisory Council on Clean Air Compliance Analysis (COUNCIL): Chair of the Ecological Effects Subcommittee (2010-2013) Panel Reviews to Congress on Section 812 Study of the Clean Air Act and on the Black Carbon report to Congress.
Fernandez, Ivan	Conference Chair/Co-Chair	Co-host of the international conference BIOGEOMON 2012, to be held at Point Lookout, Maine: July 16-20, 2012.
Fernandez, Ivan	General/Other	Member – Planning Committee for Acadia National Park Science Symposium (2011 - 2012)
Fernandez, Ivan	General/Other	Soil Science Society of America Graduate School Workshop Committee (2010 – 2012), Chair in 2011, led workshops at the international meetings both years.
Fernandez, Ivan	General/Other	Member – USDA Forest Service Planning Committee - Symposium on the Effects of Forest Management and Intensive Harvesting on Nutrient Cycling. 2012 - 2013. Durham, New Hampshire.
Fernandez, Ivan	Grant Review Board Member	Invited Member – National Science Foundation Spring 2012 Long Term Research in Environmental Biology (LTREB) Panel.
Fernandez, Ivan	General/Other	Member - State of Maine Board of Certification for Geologists and Soil Scientists (1993 – present)
Hall, Brenda	Conference Section Chair	Transantarctic Mountains Workshop, Glacial and surface processes discussion leader
Hall, Brenda	General/Other	US Representative for Geosciences to the Scientific Committee on Antarctic Research
Hamilton, Gordon	Advisory Board	National Science Foundation: WISSARD advisory board
Hamilton, Gordon	Advisory Board	NASA: Operation IceBridge advisory board
Hamilton, Gordon	Advisory Board	US CLIVAR working group on Greenland Ice Sheet - Ocean Interactions
Hamilton, Gordon	Conference Section Chair	AGU Fall Meeting, Session convenor for "Enhanced Glaciological Understanding Through Innovation", December 2013
Hamilton, Gordon	Grant Review Board Member	NSF Panel for Frontiers of Earth System Dynamics, May 2013
Hamilton, Gordon	Conference Chair/Co-Chair	Conference Co-Chair/Organizer for "CLIVAR Workshop on Greenland Ice Sheet-Ocean Interaction", June 2013
Jain, Shaleen	Editorship	Associate Editor, Journal of the American Water Resources Association (August 2007 -- April 2013)
Jain, Shaleen	Editorship	Editor, Journal of Water and Climate Change (May 2013 -- present)
Jain, Shaleen	Grant Review Board Member	NSF Environmental Sustainability Program, Proposal Reviewer (2013)
Kelley, Alice	Advisory Board	Member of Maine Geological Society Board of Directors
Kelley, Alice	Advisory Board	Member Science Advisory Board, Penobscot Restoration Trust
Kelley, Joseph	Advisory Board	Member Coastal Education Research Foundation Board of Directors
Kelley, Joseph	Advisory Board	Hudson Museum Board of Cooperating Curators, University of Maine

Kelley, Joseph	Editorial Board	Editorial Board, Journal of Coastal Research
Kelley, Joseph	Advisory Board	Western Carolina Program for the Study of Developed Shorelines Fellow
Kreutz, Karl	Panel Chair	U.S. Ice Core Working Group
Kreutz, Karl	Advisory Board	Ice Drilling Program Office
Kreutz, Karl	Editorial Board	Scientific Reports (Nature Publishing Group)
Kreutz, Karl	General/Other	tenure application review, T. Kenna, Columbia University
Maasch, Kirk	Program Committee Member	University Corporation for Atmospheric Research, Member's Nominating Committee
McGill, Brian	Editorial Board	Global Ecology & Biogeography
McGill, Brian	Editorial Board	Frontiers in Ecology and Environment
McGill, Brian	Editorial Board	American Naturalist
Olsen, Brian	General/Other	“Sparrows of the Salt Marsh” list-serve moderator, 72 members ('09 – present)
Olsen, Brian	General/Other	“Coastal Wetlands International Working Group” list-serve moderator, 31 members from four continents ('10 – present)
Roscoe, Paul B.	General/Other	External Committee member and examiner, Michael Price (Department of Anthropology, Stanford)
Roscoe, Paul B.	General/Other	Advised Archaeology/Anthropology Curator of Peabody Museum, Harvard, on artifact acquisition
Sandweiss, Dan	Editorship	Founding Editor, Andean Past (Cornell Latin American Studies Program)
Sandweiss, Dan	Editorial Board	Editorial Board Member, Chungará Revista de Antropología Chilena
Sandweiss, Dan	Editorial Board	Editorial Board Member, Latin American Antiquity (published by the Society for American Archaeology)
Sandweiss, Dan	Grant Review Board Member	Member, NSF ArcSEES (Arctic Science Engineering and Education for Sustainability) Panel (February 2013)
Sandweiss, Dan	Advisory Board	R.S. Peabody Museum of Archaeology, Phillips Academy, Andover MA
Sandweiss, Dan	Professional Association Committee	Chair, International Governmental Affairs Committee, Society for American Archaeology (newly formed committee, I am the first chair)
Sandweiss, Dan	Professional Association Committee	Committee on the Americas Advisory Network, Society for American Archaeology
Sandweiss, Dan	Award Committee Member	Selection Committee, Award for Excellence in Latin American and Caribbean Archaeology, Society for American Archaeology
Sandweiss, Dan	Program Committee Member	Organizing Committee, Second Conferencia Intercontinental of the Society for American Archaeology (Lima, Peru, August 2014)
Sandweiss, Dan	Program Committee	Scientific Advisory Committee for the Congreso Nacional de Arqueología (Perú)

	Member	
Sandweiss, Dan	Program Committee Member	Scientific Advisory Committee for the 4th Southern Deserts Conference
Sandweiss, Dan	General/Other	Tenure Review Letter, University of Oregon
Sandweiss, Dan	General/Other	Tenure Review Letter, Washington State University
Sandweiss, Dan	General/Other	Post-tenure Review Letter, Idaho State University
Sandweiss, Dan	General/Other	Adjunct Research Appointment Review Letter, Vanderbilt University
Sandweiss, Dan	General/Other	I operate an Andean Studies email information distribution list.
Saros, Jasmine	Editorial Board	Associate editor of the journal Hydrobiologia
Saros, Jasmine	Conference Chair/Co-Chair	Co-organizer of the 22nd North American Diatom Symposium, to be held Aug. 13-17 2013 in Bar Harbor, Maine
Sorg, Marcella	General/Other	External Reviewer for faculty member at another university.
Sorg, Marcella	Award Committee Member	Chair, T.Dale Stewart Award Committee, Physical Anthropology Section, American Academy of Forensic Sciences.
Thaler, Jeffrey	Conference Chair/Co-Chair	I Chair or Co-Chair the E2Tech monthly forums in Maine.
Thaler, Jeffrey	General/Other	Chair, Williams College's Gaudino Fund
West, Catherine	Editorship	I am currently editing a special section of the "Journal of Island and Coastal Archaeology" that focuses on the use of stable isotope analysis in various archaeological contexts. I proposed the section to the journal editors, solicited papers and suggested reviewers, and am responsible for writing the introduction to the special section. This section is currently in press.

To Department:

Name	Description
Chai, Fei	Serve as the Director for the School of Marine Sciences, any thing I do on daily basis is all related to better serve the faculty, students, and staff in the SMS.
Chawathe, Sudarshan S.	Committees of the School of Computing and Information Science (SCIS), University of Maine. Curriculum CS graduate Labs Web and Marketing PEER committee

Denton, George	Policy Advisory Committee for the Climate Change Institute
Fastook, James L.	Graduate and Peer Committees and alternate Graduate Coordinator
Fernandez, Ivan	Peer Committee: Plant, Soil and Environmental Sciences Peer Committee: Climate Change Institute Peer Committee: School of Forest Resources Chair - School of Forest Resources Director Selection Committee Member - School of Forest Resources Faculty Position in Forest Ecosystems and Carbon Member - Climate Change Institute Borns Symposium and 40th Anniversary Planning Committee Member - Steering Committee: Climate Change Institute A2C2 IGERT Member - Recruiting Committee: Climate Change Institute A2C2 IGERT Graduate Faculty Building Manager, Potato Storage Building
Hall, Brenda	Peer Review Committee (ERS; chair) Peer Review Committee (CCI) Field Trip Organizing Committee (CCI) Graduate Committee (ERS) Graduate Committee (CCI)
Hamilton, Gordon	Chair, Peer review committee (Climate Change Institute) Co-Chair, Website committee (Climate Change Institute)
Hooke, Roger	Taught one 2-credit course (ERS 602) in Spring'13 Participated (with several faculty and students) in a sustainability seminar in Fall'12 Gave one "Brown Bag" seminar on my research activities in Fall'12 Served on graduate student committees Was available for consultation with graduate students
Kelley, Alice	Undergraduate Coordinator Curriculum Committee Member
Kelley, Joseph	Peer Review Committee, School of Earth and Climate Sciences Peer Review Committee, Climate Change Institute Recruitment Committee, IGERT Program, Climate Change Institute Planning Committee, Borns Symposium, Climate Change Institute Development Committee
Kreutz, Karl	CCI graduate committee ERS undergraduate advisor ERS strategic planning committee CCI Churchill Fund committee chair ERS peer review committee
Kurbatov, Andrei	One of the organizers of Climate Change Institute Lecture series
Maasch, Kirk	Climate Change Institute Policy Advisory Committee Department of Earth Sciences Peer Review Committee Department of Earth Sciences Graduate Committee

Mayewski, Paul	Director Climate Change Institute
McGill, Brian	Chair of SSI research council Member SSI stewardship council Regular faculty meetings SBE Peer Review committee
Norton, Stephen	Taught ERS 521 pro bono
Olsen, Brian	SBE Graduate Committee Member (Fall 2012 & Spring 2013) Chair, SBE Animal Graduate Student Award Committee (Spring 2013) EES Graduate Faculty Council (Fall 2012 & Spring 2013) Member, Paleoecologist Faculty Search Committee (Fall 2012 - Joint SBE/CCI)
Roscoe, Paul B.	Chair of Anthropology Department (2011-13) Advanced Anthropology's proposal for an undergraduate BA in the Human Dimensions of Climate Change. Program currently at Stage 9 in the new program approval sequence Member of Graduate Committee for AEP PhD program. Member, Search Committee for Assistant Professor position (2012-13). 4) Took over as Graduate Committee Organizer, 2013
Sandweiss, Dan	For Climate Change Institute: Chair, Borns Symposium/CCI 40th Anniversary Organizing Committee Co-chair, Churchill Exploration Fund Selection Committee Member, Policy Advisory Committee Co-organizer, INT 500 Seminar (Fall 2012)
Saros, Jasmine	Associate Director, Climate Change Institute; Chair, Terrestrial Paleoecologist Faculty Search Committee Member, Stream Ecologist Faculty Search Committee Member, Policy Advisory Committee of SBE Member, Post-tenure review of Associate Professors in SBE Member, Post-tenure review of Professors in SBE
Schauffler, Molly	Respond to inquiries about climate education and resources Connect CCI graduate students with science teachers. Consult with K-12 science teachers about climate curriculum, monitoring equipment, and climate scientist speakers (including graduate students).
Sorg, Marcella	Service lecture in capstone course Advisor on two capstone projects and reader on one other
West, Catherine	I provide service to the Department of Anthropology in the following ways: Advising: I advise 22 undergraduate students, 1 Capstone project, and am the second reader on 1 Capstone project. Recruiting: I have represented the Department of Anthropology at the University's Accepted Student Day. Faculty Hires: I met with candidates/attended the talks/attended dinner with the candidates for the position in Anthropology. Committees: Anthropology Department Chair Search Committee Anthropology Department Administrator Search Committee Climate Change Institute IGERT Admissions Committee Climate Change Institute Graduate Coordinator Climate Change Institute Admissions Committee Chair

Zaro, Gregory D. Appointed Chair of Department of Anthropology, to begin September 2013.

To College:

Name	Description
Belknap, Daniel F.	Boat Safety Committee member
Chai, Fei	serve on the NSFA Executive Committee
Chawathe, Sudarshan S.	2009-04--present. CLAS instructional technology committee. 2009-01--present. CLAS Committee on Admissions, Advising, and Retention. 2010-01--present: CLAS committee on Digital Curation certificate program. 11/2005--present. Support for Science Students, University of Maine. Member, Faculty Advisory Board. Advising a residential education and support program for students studying science. 2/2007--5/2007. College of Liberal Arts and Sciences, University of Maine. Member, Chair Search Committee. 9/2006--present. College of Liberal Arts and Sciences, University of Maine Member, Faculty Awards Committee. 9/2010--present: CLAS Academic Council. 5/2010--present. Working with Charlsye Smith Diaz and Dylan Dyer of the English department to design and implement a Web-based grading and assessment application for their large courses.
Kelley, Alice	NSFA Program Coordinator NSFA Curriculum Committee Member
Kelley, Joseph	Faculty Mentoring Guide Development Committee Judge, Graduate Student Expo
Kreutz, Karl	SECRL advisory board
Olsen, Brian	External Member, Population Ecologist Faculty Search Committee (Spring 2013 - WLE)
Roscoe, Paul B.	Member, Dean's Council
Sandweiss, Dan	Member, multiple professorship review committees (College of Liberal Arts and Sciences, College of Engineering)
Schauffler, Molly	Promote STEM careers and STEM education through the Science program development at the Hutchinson Center.
Sorg, Marcella	Committee member: to develop proposed minor in Health, Medicine & Society
West, Catherine	I provide service to the College of Liberal Arts and Sciences by representing the Department of Anthropology at Accepted Student Day. In addition, I served as a judge for the Center for Undergraduate Research showcase and served as an advisor for a poster presented at the showcase.
Zaro, Gregory D.	Academic Council, College of Liberal Arts and Sciences, University of Maine

To University:

Name	Description
Belknap, Daniel F.	University Research Council member
Chai, Fei	University Research Committee
Chawathe, Sudarshan S.	9/2006–present. University Club, University of Maine Member, Executive Committee. (Vice-president, 2008–2009; President 2009–2010) 9/2008–present. Volunteer for Maine Hello.
Fernandez, Ivan	Member: President's Roundtable University of Maine Representative to the National Park Service North Atlantic Coastal Cooperative Ecosystem Studies Unit (2005-present) Advisory Board: Environmental Chemistry Laboratory (2004-present) Search Committee: Faculty position in Ecology shared between School of Biology and Ecology and the Climate Change Institute Member Project Advisory Team: Signs of the Seasons: A Maine Phenology Project
Hamilton, Gordon	Faculty Senate
Jain, Shaleen	Oral Presentation Competition Review Panel, UMaine Center for Undergraduate Research Showcase, April 2013.
Kelley, Alice	Cultural Affairs Committee Member Cooperating Curator, Hudson Museum
Kelley, Joseph	Chair, Geddes-Simpson Award Committee
Kreutz, Karl	UMaine Multiuser Equipment Initiative review panel; 2012 Windstorm Challenge judge
Maasch, Kirk	UMaine Academic Representative to University Corporation for Atmospheric Research (UCAR) Member, Hudson Museum Advisory Board
Mayewski, Paul	Member University Research Council
Norton, Stephen	Chair, Selection Committee for the Distinguished Professor award Member, President's Roundtable
Olsen, Brian	Admitted Student Open House Presentations (Feb. 6th & April 2nd) Member, Paleocologist Faculty Search Committee (Fall 2012 - Joint SBE/CCI)
Robinson, Brian S.	Faculty Senate, Co-Chair of PCRRRC committee
Roscoe, Paul B.	Member, EES Graduate Board (2012-13) Member, IGERT A2C2 Steering Committee (2012-13).
Sandweiss, Dan	Chief Cooperating Curator, Hudson Museum Board of Cooperating Curators Co-Chair, Cultural Affairs/Distinguished Lecture Series Committee Co-Chair, Commencement Committee Co-Chair, Project 24-7 Administrative Team President, UMaine chapter of Phi Kappa Phi Honor Society Campus Representative for Faculty Fulbright Awards Member, EMEC (Enrollment Management Executive Committee) Member, RiSE (Research in STEM Education) Center Advisory Board Member, Provost's Tenure & Promotion Advisory Committee

Member, University Research Council
 Member, Provost's Executive Staff
 Member, Provost's Council
 Member, Collins Center for the Arts Advisory Board (ex officio)
 Member, Collins Center Board Nominating Committee
 Member, SPIA (School of Policy and International Affairs) Advisory Board (ex officio)
 Member, Provost's International Advisory Team
 Etc.

Saros, Jasmine Member of advisory board of the Council on Undergraduate Research

Schauffler, Molly Connect aspiring young students and adult career changers with STEM learning opportunities at the University of Maine.

Sorg, Marcella Guest lecture in School of Marine Sciences forensic science course (forensic anthropology)
 Guest lecture in Human Development course (drug abuse)

Thaler, Jeffrey Working as counsel to the University on a variety of legal and related matters.

West, Catherine I serve on the Cultural Affairs Committee (a 3-year term), which provides funding to support cultural activities on campus and to bring distinguished speakers to campus.

To University System:

Name	Description
Chai, Fei	Prepared a report on marine science research and education at the UMaine for the Chancellor's office

To State Government Agencies:

Name	Description
Fernandez, Ivan	Maine State Board of Certification for Geologists and Soil Scientists – Augusta, Maine (1992 to present) Ongoing collaboration with Maine DEP, Maine CDC, Maine DOC, and others in Maine climate change adaptation initiatives
Norton, Stephen	Public talk to the Allagash Waterway Committee
Sorg, Marcella	Collaborated in preparation of report: Cost of Alcohol and Drug Abuse in Maine, 2010 Provided drug death data to Office of Substance Abuse, Community Epidemiology Surveillance Network

To General public/local community:

Name	Description
Fernandez, Ivan	I continue to participate in, and represent the University in, climate change adaptation initiatives in Maine. Northeastern Association of Graduate Schools Dissertation Awards Committee
Hamilton, Gordon	Presentations to local groups (e.g., Kennebunk Town Energy Committee, River City Cinema)
Hooke, Roger	Led a 4-session course on the Geology of the Blue Hill Peninsula (14 registered) for Colloquy Downeast
Jain, Shaleen	Expert Reviewer for the Nature Conservancy. Draft report to the legislature titled, "An Assessment of the Economics of Natural and Built Infrastructure For Water Resources in Maine," May 2013.
Kelley, Joseph	McArthur Foundation "Genius" Award Nomination Committee
Kreutz, Karl	Numerous public lectures in 2012/13; Maine Audubon board of trustees
Kurbatov, Andrei	One of the developers of 10green project (http://www.10green.org)
Norton, Stephen	Led a field trip for Friends of Sears Island Two public talks in Hune 2013, Penobscot Bay Stewards (Geology of Maine) and Great Pond Mountain Conservation Trust (Geology of the GPMCT land)
Olsen, Brian	Two public lectures: Bangor Nature Club – December 2012. “Why do Birds Sing?” Brewer, Maine. Orono Bog Boardwalk – May 2013. “The Sparrows of Orono Bog”. Bangor City Forest: Bangor, Maine.
Sandweiss, Dan	Board member, Bangor Foreign Policy Forum Board member, Maine Chapter of the Fulbright Association
Schauffler, Molly	Founding Board member, Belfast Bay Watershed Coalition Secretary for the Josselyn Botanical Society Advisory Board member for the Maine Community Foundation, Waldo County Fund Advisory Board member for Signs of the Seasons (Maine Phenology Network)
Sorg, Marcella	Lecture to Bangor Historical Society on mummy in Hudson Museum Lecture to Dirigo Pines Community on Maine's medical examiner system Lecture to Dirigo Pines Community on St. Croix exhumation of Champlain's crew Provided drug death data to Kennebec County-Somerset County Overdose Prevention Task Force Provided drug death data to Portland Overdose Prevention Task Force
Thaler, Jeffrey	Founding Board Member, Friends of Portland Adult Education
Zaro, Gregory D.	The rise and collapse of an ancient Maya city in Belize, Central America. Public presentation at the University of Zadar, Croatia, April 3, 2013.

To Pre-K - 12 Education:

Name	Description
Chawathe, Sudarshan S.	12/1999–present. Intel Science Talent Search Science Service. Judge 2000–present; evaluator 1999–2000. Judging the week-long Science Talent Institute and evaluating entries for the Science Service’s Intel Science Talent Search (formerly, the Westinghouse Competition). 10/2006--present. "Classbooks": A Web-based data management system for tracking student reading and outcomes, currently used in a 1st grade class at the Palmyra school, Maine, (MSAD 48).
Fernandez, Ivan	As noted elsewhere, we have developed K-12 curriculum materials on Nitrogen in Watersheds used by high school science teachers and students in 3 states. I have also been directly involved with Old Town High School teachers and students with their implementation of these programs.
Hall, Brenda	Regularly answer letters and emails from students about Antarctica, glaciers, and climate change.
Hamilton, Gordon	Presentations and classroom visits to Orono High School, Old Town High School
Jain, Shaleen	Workshop Presenter (with T. Baker and R. Smith), Northern Maine Children's Water Festival, University of Maine, October 2012. Workshop Presenter (with T. Baker), UMaine 4-H Invention Convention, University of Maine, May 2013.
Kreutz, Karl	Numerous K-12 school visits in 2012/13
Norton, Stephen	Worked with Old Town High School Science Teachers on the biogeochemistry of nitrogen, as part of a National Science Foundation grant to Ivan Fernandez, et al.
Olsen, Brian	Classroom demonstration of "active learning in a lecture setting" for 8 high school teachers
Schauffler, Molly	Write letters of support and collaboration with teachers for funding requests Advisory Board for Island Institute STORMS Project (Elementary school weather monitoring) Develop and delivered 17 Data Literacy workshops to science and mathematics teachers in Belfast/Searsport, Ellsworth, Bangor, and Newport

Service – Manuscripts/Proposal Reviewed

Name	Manuscripts	Proposals	Description
Belknap, Daniel F.	3	4	Review of manuscript for Geology, Fall, 2012 Review of manuscript for Deep Sea Research, Spring 2013 Review of manuscript for Marine Geology, Spring, 2013 Review of proposal for Hudson River Foundation, Fall, 2012 Review of proposal for NSF-MGG-OCE Fall, 2012 Review of proposal for NSF-BIO-OCE Spring, 2013 Review proposal for Canadian Foundation for Innovation, Spring, 2013
Denton, George	5	4	Peer-review journals and NSF proposals
Fastook, James L.	1	5	Manuscript: Journal of Glaciology, Clason, Modelling Late Weichselian evolution of the Eurasian ice sheets forced by surface meltwater-enhanced basal sliding Proposal: NASA: Hansen, Composition and Radiative Balance of the Martian Seasonal Polar Caps, Using Infrared Spectroscopy

Proposal: NASA: Putzig, 3-D Subsurface Imaging and Analysis of Planum Australe with SHARAD Data
 Proposal: NERC: BIOALBEDO: biological enhancement of surface melt on the Greenland Ice Sheet
 Proposal: Netherlands Polar Programme: Tijn-Reijmer, Impact of refreezing on the mass balance of the Greenland ice sheet in a changing climate
 Proposal: NSF: Parizek, Amundsen Sea Embayment: Projections and uncertainties

Fernandez, Ivan	14	2	I periodically review manuscripts for a wide range of journals in natural and environmental sciences as well as proposals for the National Science Foundation, the US Department of Agriculture and the US Environmental Protection Agency.
Hall, Brenda	20	10	I regularly review manuscripts (on average 2 per month) for a variety of well-known journals. I also review proposals for the National Science Foundation and international funding agencies, such as the US-Israeli Binational Science Foundation, as well as for National Geographic and the American Philosophical Society Lewis and Clark Fund.
Hamilton, Gordon	14	10	Manuscript reviews for Science (1), Nature Geoscience (3), Journal of Glaciology (1), Annals of Glaciology (2), The Cryosphere (2), Geophysical Research Letters (2), Journal of Geophysical Research (2) Book manuscript technical review for University Press of New England (1) Proposal reviews for NSF (5), NASA (2), UK NERC (1), Norwegian Research Council (1), Netherlands Organization for Scientific Research (1)
Hooke, Roger	6	4	4 for the authors in advance of submission 1 for Geophysical research Letters 1 for GSA Today
Jain, Shaleen	6	2	NSF Environmental Sustainability Program Montclair State University Sustainability Program Proposal
Kelley, Joseph	7	1	Proposals, 1 Sea Grant Papers, 5, Geology, Canadian Journal Earth Sciences, Geomorphology, Sedimentology, Journal of Coastal Research Cooks, 2 for Columbia University Press
Kreutz, Karl	4	1	1 Mariani et al. (Climate of the Past) Zhao et al. (Scientific Reports) Stranne et al. (Scientific Reports) Pruenkhart and Legrand (Climate of the Past) Laabs (NSF)
Kurbatov, Andrei	4	1	All are relevant to paleoclimate or volcanism.
Maasch, Kirk			Environmental Modelling & Software, Geophysical Research Letters, Wiley
McGill, Brian	30	2	Reviewer for Science, Nature, PNAS, Ecology Letters among others Grant reviewer for various international agencies
Olsen, Brian	4		Estuaries and Coasts (2) and PLoS ONE (2)

Kelley, Alice	Interviews about earthquakes, three different occasions. Neglected to note dates.
Kelley, Joseph	Channel 7 TV, Bangor, 10/29/13, Lewiston Sun Journal, 11//12/12, Our Amazing Planet, Cable Television, 11/28/12, John Rudoff, Huffington Post1/5/13, Beth Daly, Boston Globe
Kreutz, Karl	BDN, WABI, WLBZ, Fox ABC, Guardian stories, NSF science 360 videos, Nature magazine, National Park Service
Mayewski, Paul	21 July – Bangor, Maine – Forbidden America interview e climate change 5 October – Punta Arenas, Chile – Punta Arenas newspaper – Antarctic and SH climate variability 2 Nov - Stanley, Falkland Islands TV - Antarctic and SH climate variability 2 Nov - Stanley, Falkland Islands Newspaper - Antarctic and SH climate variability 24 Jan 2013 – MPBN – Journey Into Climate Change (6) 23 April (Earth Day) – appeared in 230 venues as part of movie “Thin Ice” 13 June – Webnar for Explorers Club – Journey Into Climate Change Institute
Olsen, Brian	Interviewed by a reporter for the Associated Press working on an article on the effect of climate change on birds
Sorg, Marcella	Bangor Daily News on drug abuse in Maine

SPECIAL PUBLIC SERVICE RECOGNITION/AWARDS/HONORS RECEIVED

Name	Description
Mayewski, Paul	Honorary Member American Polar Society - awarded at 75th APS Anniversary celebration Lambert Fellow, Deerfield Academy, Deerfield, Mass.

Other: (e.g. special contacts)

Name	Description
Denton, George	Served as a member of the advisory committee for climate research of the Comer Science and Education Foundation.
Fernandez, Ivan	I continue to be involved in state-level activities regarding climate change adaptation across multiple natural resource based sectors of the Maine economy. This is a continuation of my involvement in the Maine Climate Change Stakeholder Adaptation Process. The Bear Brook Watershed in Maine project has its own web site: http://www.umaine.edu/bbwm/ with real-time stream monitoring in collaboration with the US Geological Survey: http://waterdata.usgs.gov/me/nwis/uv/?site_no=01022294&PARAMeter_cd=00065,00060 and is also a participant in the emerging Smart Forests initiative: http://smartforests.org/
Hooke, Roger	Edited English in two papers written by a Chinese geoscientist
Olsen, Brian	Member of the Consulting Scientific Board for the Schoodic Bird Ecology Lab at the Schoodic Education and Research Center, Acadia National Park, Winterport, Maine. Vice Chair of the Board of Directors of the Biodiversity Research Institute
Zaro, Gregory D.	Invited to be a member of the steering committee for the 4th Southern Deserts Conference: Quaternary Evolution of Desert Landscapes and Peoples, to be held November 10-14, 2014, Mendoza, Argentina.